



Please note that Cypress is an Infineon Technologies Company.

The document following this cover page is marked as “Cypress” document as this is the company that originally developed the product. Please note that Infineon will continue to offer the product to new and existing customers as part of the Infineon product portfolio.

Continuity of document content

The fact that Infineon offers the following product as part of the Infineon product portfolio does not lead to any changes to this document. Future revisions will occur when appropriate, and any changes will be set out on the document history page.

Continuity of ordering part numbers

Infineon continues to support existing part numbers. Please continue to use the ordering part numbers listed in the datasheet for ordering.



AN INFINEON TECHNOLOGIES COMPANY

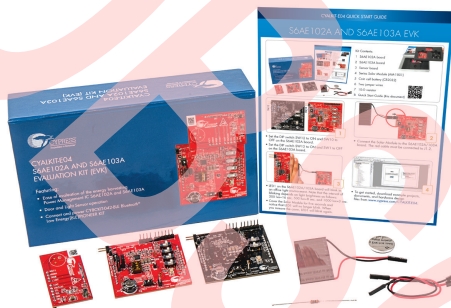
THIS SPEC IS OBSOLETE

Spec No: 002-12451

Spec Title: S6AE102A AND S6AE103A EVK CYALKIT-E04
QUICK START GUIDE

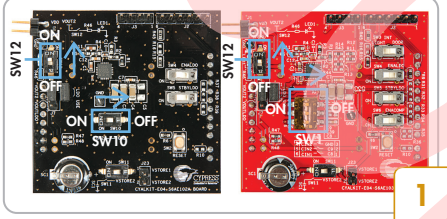
Replaced by: NONE

S6AE102A AND S6AE103A EVK



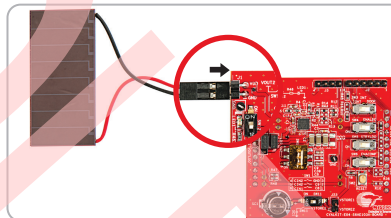
Kit Contents:

- 1 S6AE102A board
- 2 S6AE103A board
- 3 Sensor board
- 4 Series Solar Module (AM-1801)
- 5 Coin cell battery (CR2032)
- 6 Two jumper wires
- 7 10-Ω resistor
- 8 Quick Start Guide (this document)



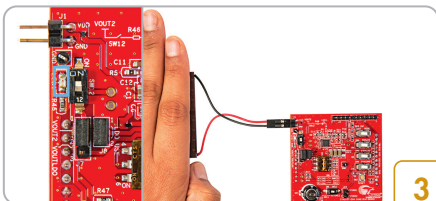
1

- Set the DIP switch SW12 to ON and SW10 to OFF on the S6AE102A board.
- Set the DIP switch SW12 to ON and SW1 to OFF on the S6AE103A board.



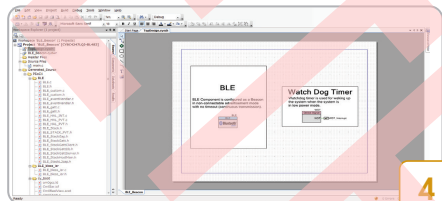
2

- Connect the Solar Module to the S6AE102A/103A board. The red cable must be connected to J1.2.



3

- LED1 on the S6AE102A/103A board will blink in an office light environment. Note that the interval of blinking depends on light brightness as follows: 200 lux=16 sec, 500 lux=8 sec, and 1000 lux=3 sec.
- Cover the Solar Module for five seconds and notice that LED1 will no longer blink. When you remove the cover, LED1 will blink again.

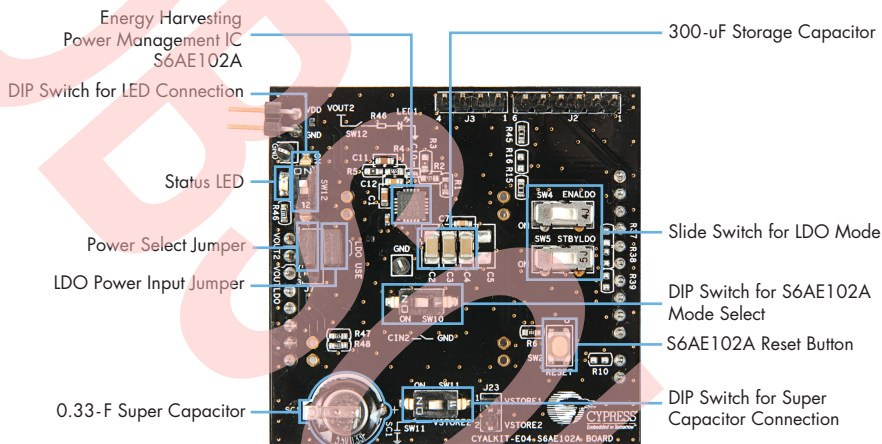


4

- To get started, download example projects, documents, and hardware design files from www.cypress.com/CYALKIT-E04.

S6AE102A AND S6AE103A EVK

S6AE102A Board Details



S6AE103A Board Details

