

PSoc® 6 BLE PIONEER KIT

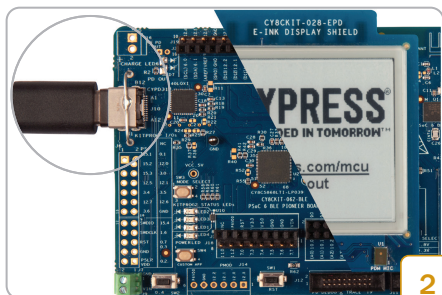


套件内容:

- 1 PSoc® 6 BLE Pioneer 板
- 2 CY8CKIT-028-EPD E-INK 显示屏
- 3 CY5677 CySmart™ BLE 4.2 USB 加密狗
- 4 USB Type-A 转 Type-C 线缆
- 5 四根跳线 (每根4英寸)
- 6 两根接近传感器导线 (每根5英寸)
- 7 快速入门指南 (本文档)



www.cypress.com/CY8CKIT-062-BLE



- 使用提供的USB电缆通过USB连接器(J10)将电路板连接到PC, 为电路板供电
- E-Ink显示屏现在将刷新并显示评估预编程代码示例的指令: CE220167 - 具有BLE连接功能的PSoc 6 MCU: 带用户界面的BLE

CySmart™
Cypress Semiconductor Inc.

INSTALL

10 THOUSAND Downloads

4.3 ★★★★★ 71+ Tools

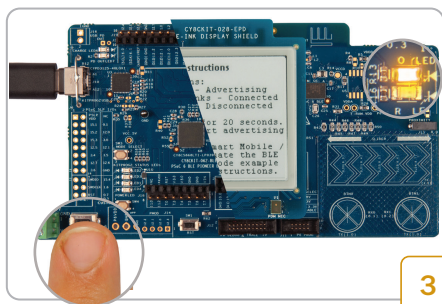
Similar

CySmart™ 是由赛普拉斯半导体公司开发的蓝牙低功耗实用程序。

1

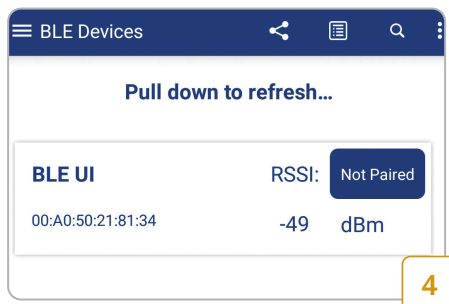
- 通过App StoreSM或Google Play™商店, 在iOS或Android设备上安装CySmart移动应用程序

PSoC® 6 BLE PIONEER KIT



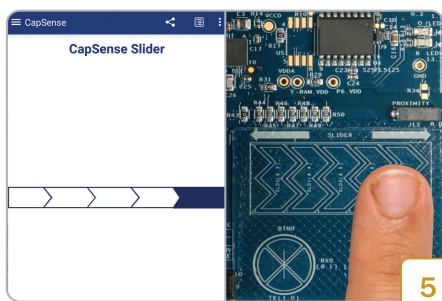
3

- 上电后，BLE将广告20秒。在此期间，橙色LED (LED8) 保持亮起，表示BLE广告状态
- 如果BLE广告超时 (LED8熄灭)，请按SW2重新开始广告



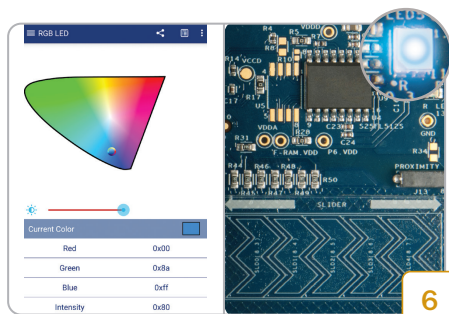
4

- 打开移动设备上的蓝牙，然后打开CySmart应用程序
- CySmart将列出“BLE UI”外设。连接到“BLE UI”外设
- 橙色LED (LED8) 以半秒间隔连续闪烁表示连接成功



5

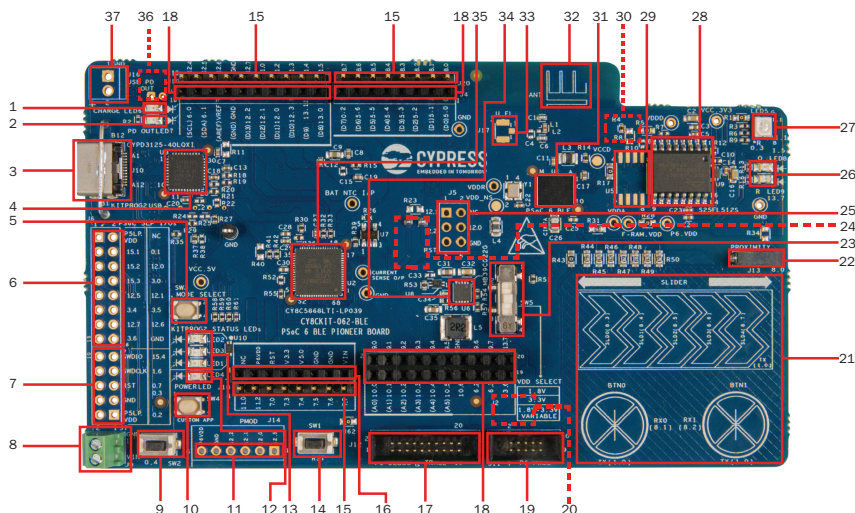
- 连接后，CySmart移动应用程序将列出外设支持的服务。滚动并选择CapSense Slider服务
- 在电路板上的CapSense/滑块上滑动您的手指，并在CySmart应用程序的CapSense Slider页面看到类似的响应



6

- 按返回按钮返回服务选择页面。滚动并选择RGB LED服务
- 在RGB LED服务页面上，选择色域上的颜色以查看来自板载RGB LED (LED5) 的类似颜色响应
- 有关评估此示例的其他功能的说明，请安装套件软件并参考代码示例：CE220167 - 具有BLE连接功能的PSoc 6 MCU:带用户界面的BLE

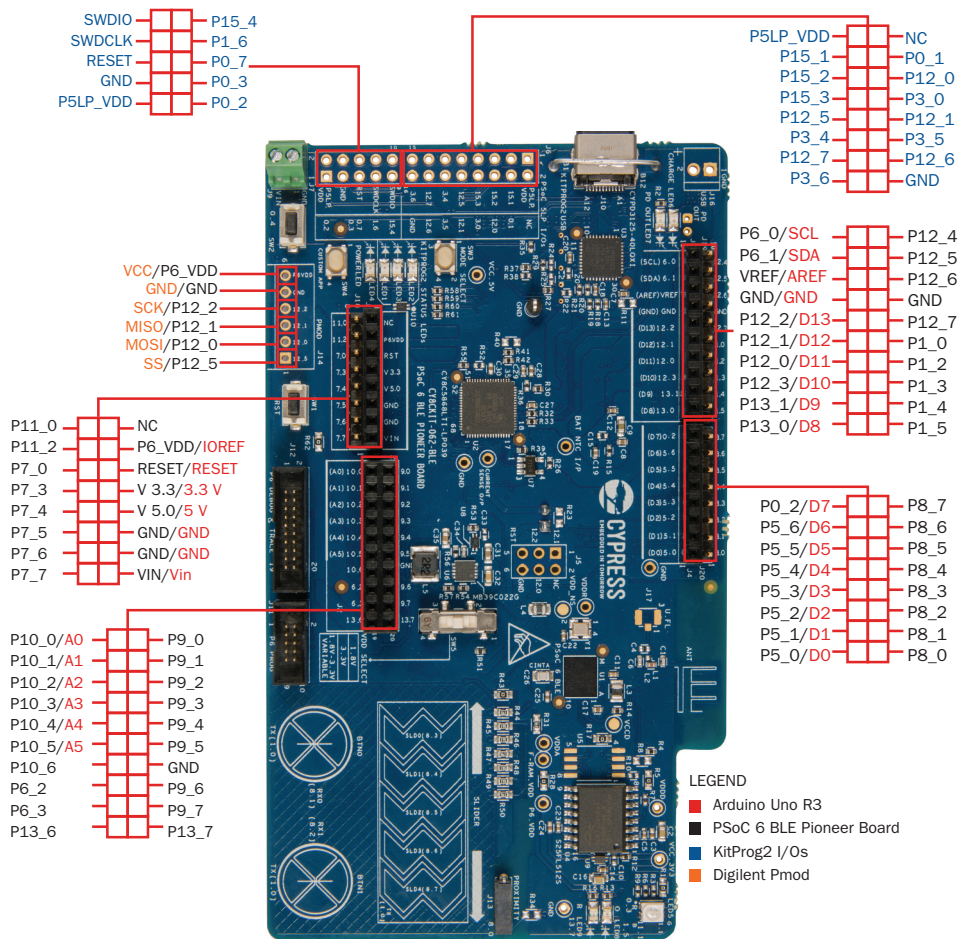
PSoC 6 BLE Pioneer 板细节



1. 电池充电指示灯 (LED6)
2. USB PD输出电压可用性指示灯 (LED7)
3. KitProg2 USB 连接器 (J10)
4. Cypress EZ-PD™ CCG3 Type-C 端口控制器配置 PD (CYPD3125-40LQXI, U3)
5. KitProg2 编程模式选择按钮 (SW3)
6. KitProg2 I/O 接头 (J6)¹
7. KitProg2 编程/自定义应用接头 (J7)¹
8. 外部电源接头 (J9)
9. PSoc 6 BLE 用户按钮 (SW2)
10. KitProg2 应用选择按钮 (SW4)
11. Digilent® Pmod™ 兼容 I/O 接头 (J14)¹
12. 电源 LED (LED4)
13. KitProg2 状态 LEDs (LED1, LED2, 和 LED3)
14. PSoc 6 BLE 复位按钮 (SW1)
15. PSoc 6 BLE I/O 接头 (J18, J19 和 J20)
16. Arduino™ Uno R3 兼容电源接头 (J1)
17. PSoc 6 BLE 调试与跟踪接头 (J12)
18. Arduino™ Uno R3 兼容 PSoc 6 BLE I/O 接头 (J2, J3 和 J4)
19. PSoc 6 BLE 编程和调试接头 (J11)
20. KitProg2 编程目标选择开关 (SW6)²
21. CapSense 滑块和按钮
22. CapSense 接近接头 (J13)
23. PSoc 6 BLE VDD 选择开关 (SW5)
24. PSoc 6 BLE 电源监控跳线 (J8)²
25. Arduino™ Uno R3 兼容 ICSP 接头 (J15)¹
26. PSoc 6 BLE 用户 LEDs (LED8 和 LED9)
27. RGB LED (LED5)
28. Cypress 512-Mbit 串行 NOR闪存存储 (S25FL512S, U4)
29. Cypress 串行 Ferroelectric RAM (U5)¹
30. Vbackup 和 PMIC 控制选择开关 (SW7)
31. Cypress PSoc 6 BLE (CY8C6347BZ1-BLD53, U1)
32. BLE 天线
33. 外部天线U.FL连接器 (J17)¹
34. Cypress 主电压调节器 (MB39C022G, U6)
35. KitProg2 (PSoc 5LP) 编程器和调速器 (CY8C5868LTI-LP039, U2)
36. 电池连接器 (J15)^{1,2}
37. USB PD 输出电压 (9V/12V) 连接器 (J16)¹

¹仅限封装, 未在板上填充²电路板底部组件

PSoC 6 BLE 板引脚布局细节



有关此套件的最新信息, 请访问 www.cypress.com/CY8CKIT-062-BLE