

Please note that Cypress is an Infineon Technologies Company.

The document following this cover page is marked as “Cypress” document as this is the company that originally developed the product. Please note that Infineon will continue to offer the product to new and existing customers as part of the Infineon product portfolio.

Continuity of document content

The fact that Infineon offers the following product as part of the Infineon product portfolio does not lead to any changes to this document. Future revisions will occur when appropriate, and any changes will be set out on the document history page.

Continuity of ordering part numbers

Infineon continues to support existing part numbers. Please continue to use the ordering part numbers listed in the datasheet for ordering.

PSoC® 4500S PIONEER KIT



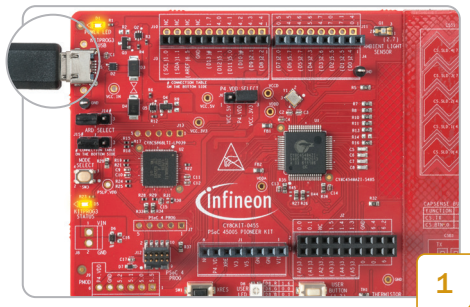
Kit Contents:

- 1 PSoC 4500S Pioneer board
- 2 USB Type-A to Micro-B cable
- 3 Six jumper wires (five inches each)
- 4 Quick Start Guide (this document)



www.cypress.com/CY8CKIT-045S

PSoC® 4500S PIONEER KIT

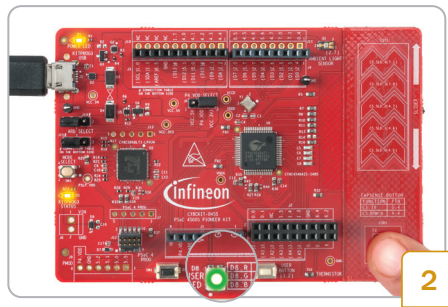


- Connect the board to your computer using the provided USB cable.

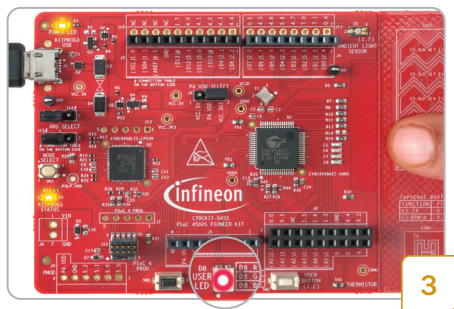
(Note: This demo does not require driver installation, but driver installation may occur in the background)

- Ensure the jumpers are in their default position, as follows:

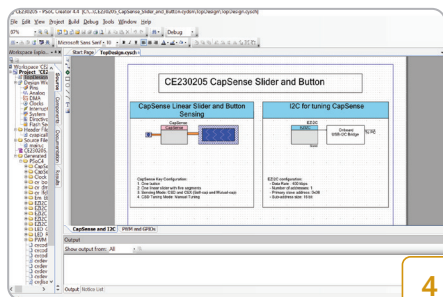
J6: 2-3, **J14:** 1-2, **J15:** 1-2.



- Put your finger on the CapSense® button and observe the user LED (D8) glowing green. Removing the finger will turn off the user LED.

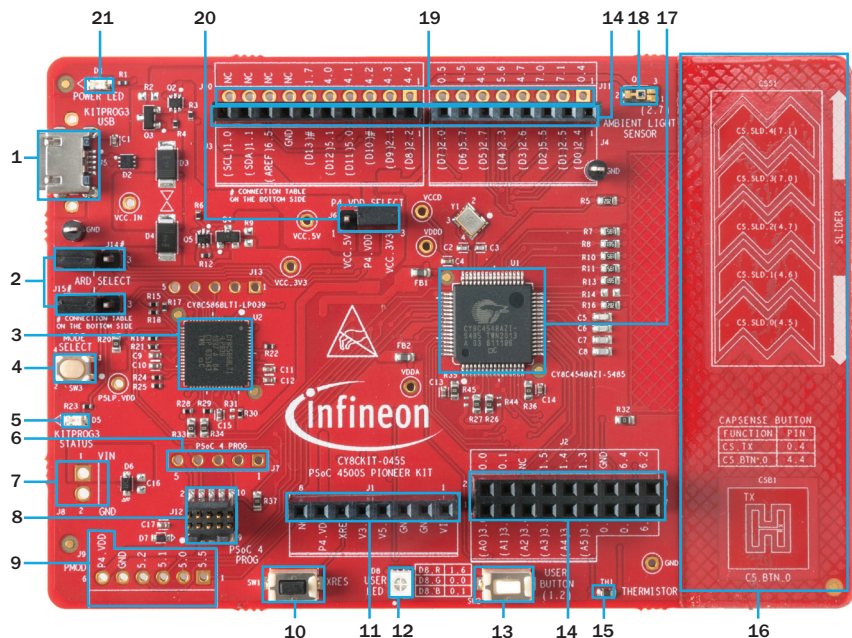


- Swipe your finger on the CapSense slider and observe the change in brightness of the red LED.



- Download and install the PSoC Creator IDE, and get the PSoC 4500S Pioneer Kit code examples, documents and hardware design files from www.cypress.com/CY8CKIT-045S.

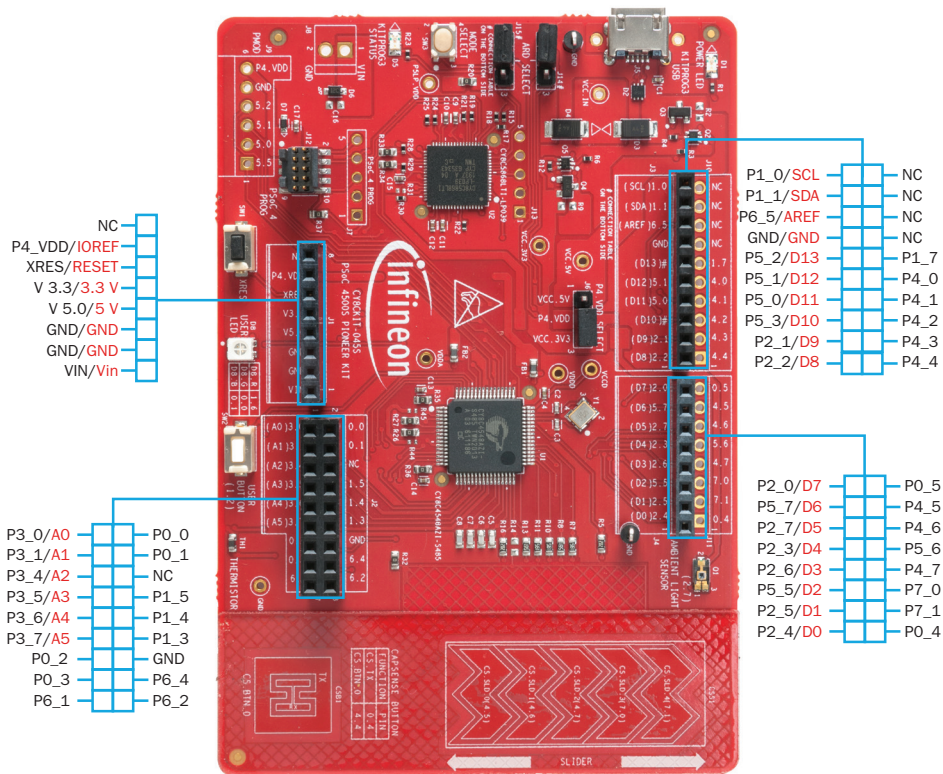
PSoC 4500S Pioneer Board Details



1. KitProg3 USB connector (J5)
2. Arduino™ select jumpers (J14, J15)
3. PSoC 5LP based KitProg3 programmer and debugger (CY8C5868LTI-LP039, U2)
4. KitProg3 programming mode selection button (SW3)
5. KitProg3 status LED (D5)
6. PSoC 4500S 5-pin SWD program and debug header (J7)*
7. External power supply connector (J8)*
8. PSoC 4500S 10-pin SWD program and debug connector (J12)
9. Pmod header (J9)*
10. Reset button (SW1)
11. Arduino™ UNO R3 compatible power header (J1)
12. User RGB LED (D8)
13. User button (SW2)
14. Arduino™ UNO R3 compatible I/O headers (J2, J3, J4)
15. Thermistor (TH1)
16. CapSense button and slider (CSB1 and CSS1)
17. PSoC 4500S (CY8C4548AZI-S485, U1)
18. Ambient light sensor (Q1)
19. PSoC 4500S extended I/O headers (J10, J11)*
20. PSoC 4500S power selection/current measurement jumper (J6)
21. Power LED (D1)

*Footprint only, not populated on the board

PSoC 4500S Pioneer Board Pinout Details



For the latest information about this kit, visit www.cypress.com/CY8CKIT-045S