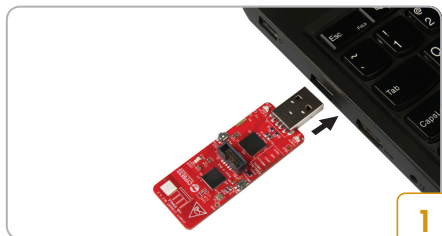
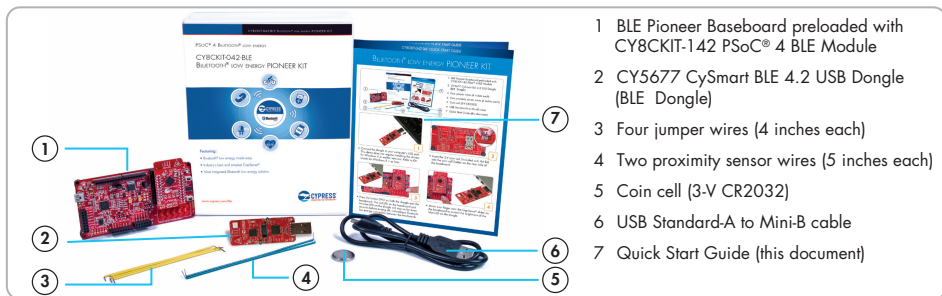
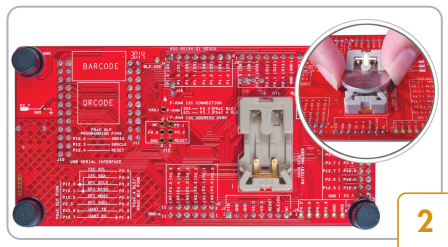


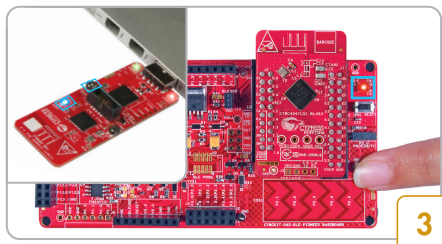
BLUETOOTH® LOW ENERGY PIONEER KIT



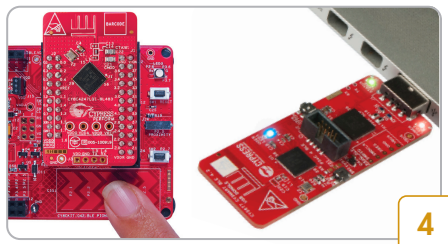
- Connect the dongle to your computer's USB port. This demo does not require installing the drivers for Windows 8 or earlier versions. Refer to Kit Guide for Windows 8.1 or later



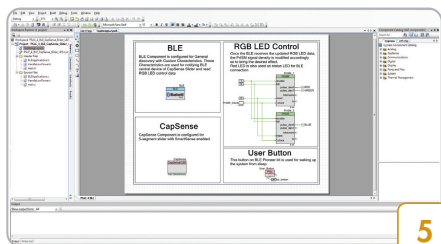
- Insert the 3-V coin cell (included with the kit) into the coin cell holder on the rear side of the baseboard



- Press the button SW2 on both the dongle and the baseboard. The red LED on the baseboard and the blue LED on the dongle will stay on for three seconds before turning off, indicating a Bluetooth low energy connection between the two boards

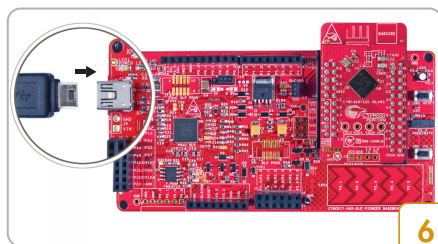


- Move your finger over the CapSense® slider on the baseboard to control the brightness of the blue LED on the dongle



5

- Download and install the PSoC Creator™ IDE, BLE Pioneer Kit code examples, documents, and hardware design files from www.cypress.com/CY8CKIT-042-BLE

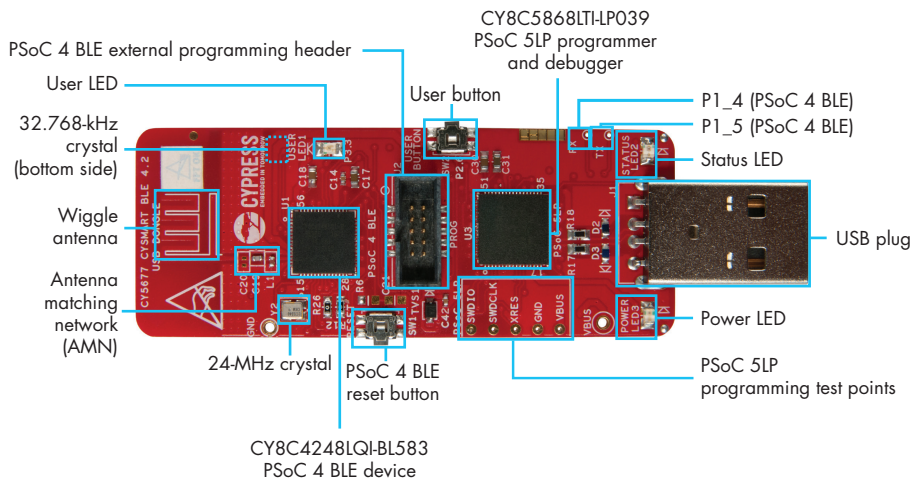


6

- To debug your PSoC Creator project, connect the baseboard, with the PSOC 4 BLE module, to your computer with a USB cable
- Refer to Chapter 4 of the Kit Guide for additional information on code examples

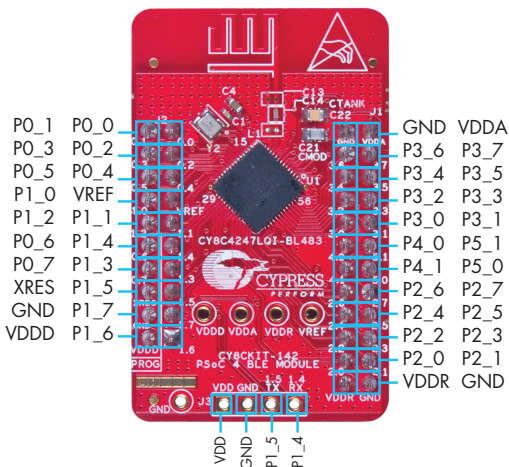
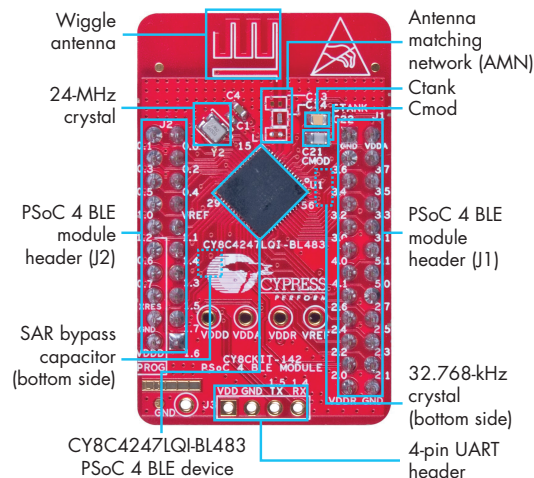
Note: If you are evaluating this demo near another BLE Pioneer Kit that is advertising (when using the default out-of-box firmware), the dongle may connect to the other baseboard instead. In this case, press the reset button (SW1) on both the dongle and baseboard of your kit, then repeat step 3 to retry connection between the two

Feature List and Pinout Description for CySmart USB Dongle



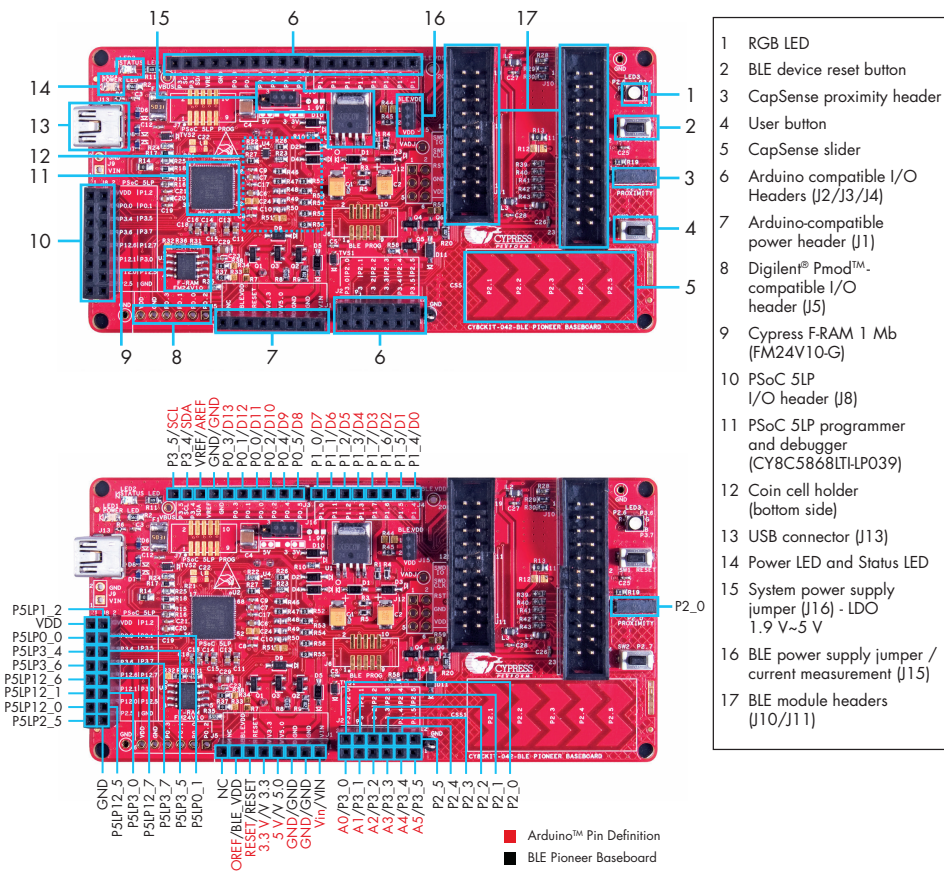
Feature List and Pinout Description for PSoC 4 BLE Module

PSoC 4 BLE - A single chip solution with a 48-MHz ARM® Cortex®-M0, BLE radio, CapSense, programmable analog (12-bit ADC, 2 current DACs, 2 low-power comparators, 4 low-power opamps) and programmable digital (4 Timer/Counter/PWMs, 4 Universal Digital Blocks, 2 Serial Communication Blocks)



BLUETOOTH® LOW ENERGY PIONEER KIT

Feature List and Pinout Description for BLE Pioneer Baseboard



For the latest information about this kit and to download kit software and hardware files, visit www.cypress.com/CY8CKIT-042-BLE