

CAPSENSE® LIQUID LEVEL SENSING SHIELD



Kit Contents:

1. CapSense® Liquid Level Sensing Shield board
2. CapSense Liquid Level Sensing 12 Sensor Flex PCB
3. CapSense Liquid Level Sensing 2 Sensor Flex PCB
4. Liquid container
5. Quick Start Guide

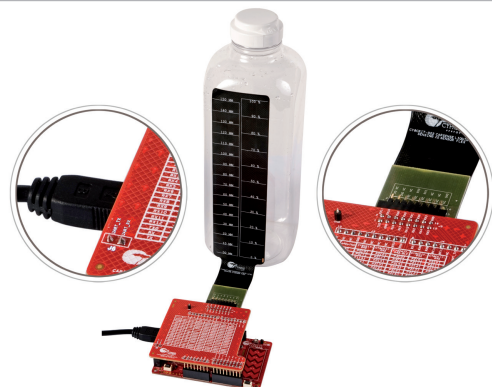


www.cypress.com/CY8CKIT-022



1

- Remove the adhesive sticker from the Liquid Level Sensing 12 Sensor Flex PCB
- Paste the Liquid Level Sensing 12 Sensor Flex PCB on the liquid container



2

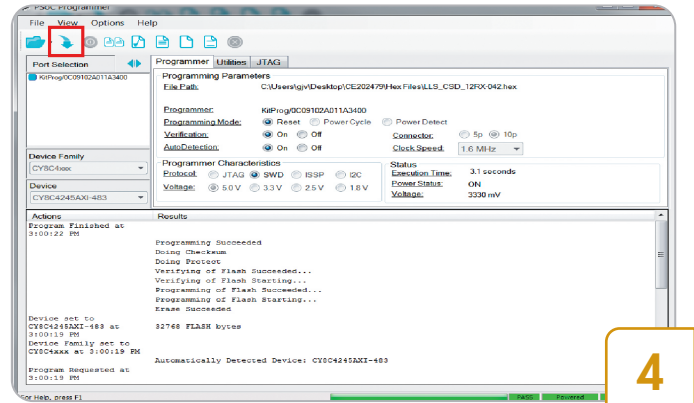
- Connect the Liquid Level Sensing Shield on the CY8CKIT-042 PSoC® 4 Pioneer Kit Arduino™ headers
- Connect the Liquid Level Sensing 12 Sensor Flex PCB to the Liquid Level Sensing Shield board
- Download and install PSoC Creator onto your PC. Once that is done, connect the kit to your PC using the USB cable provided

CY8CKIT-022 QUICK START GUIDE



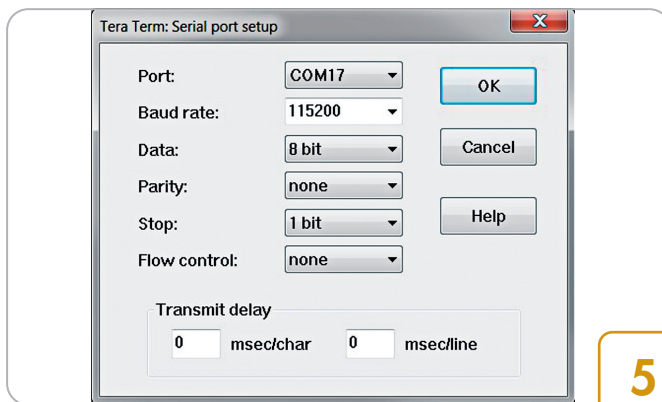
3

- Download the Liquid Level Sensing code examples from the webpage www.cypress.com/CY8CKIT-022



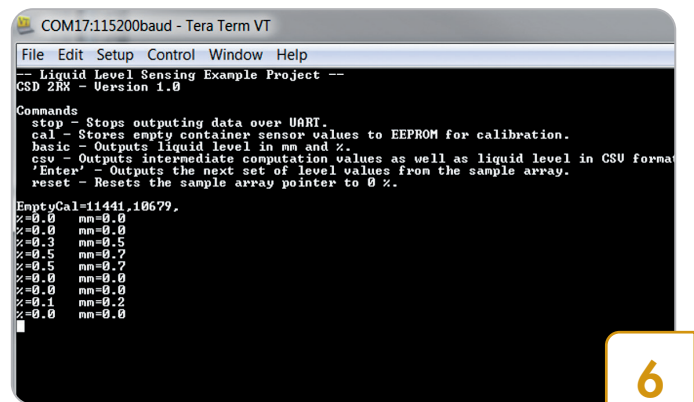
4

- Launch PSoC Programmer from the Start menu and load the "LLS_CSD_12RX-042.hex" file
- Click the Program button to program the PSoC 4 device on the CY8CKIT-042 board



5

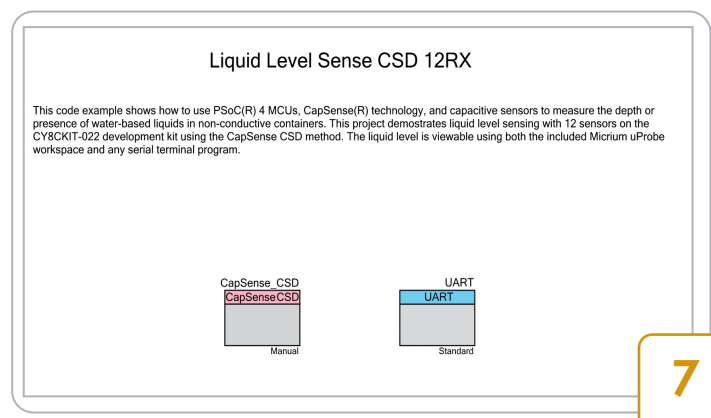
- Open the UART terminal software and connect to the kit's USB-UART COM port with the settings
- Baud rate: 115200, Data: 8 bit, Parity: None, Stop bit: 1 bit, Flow control: None



6

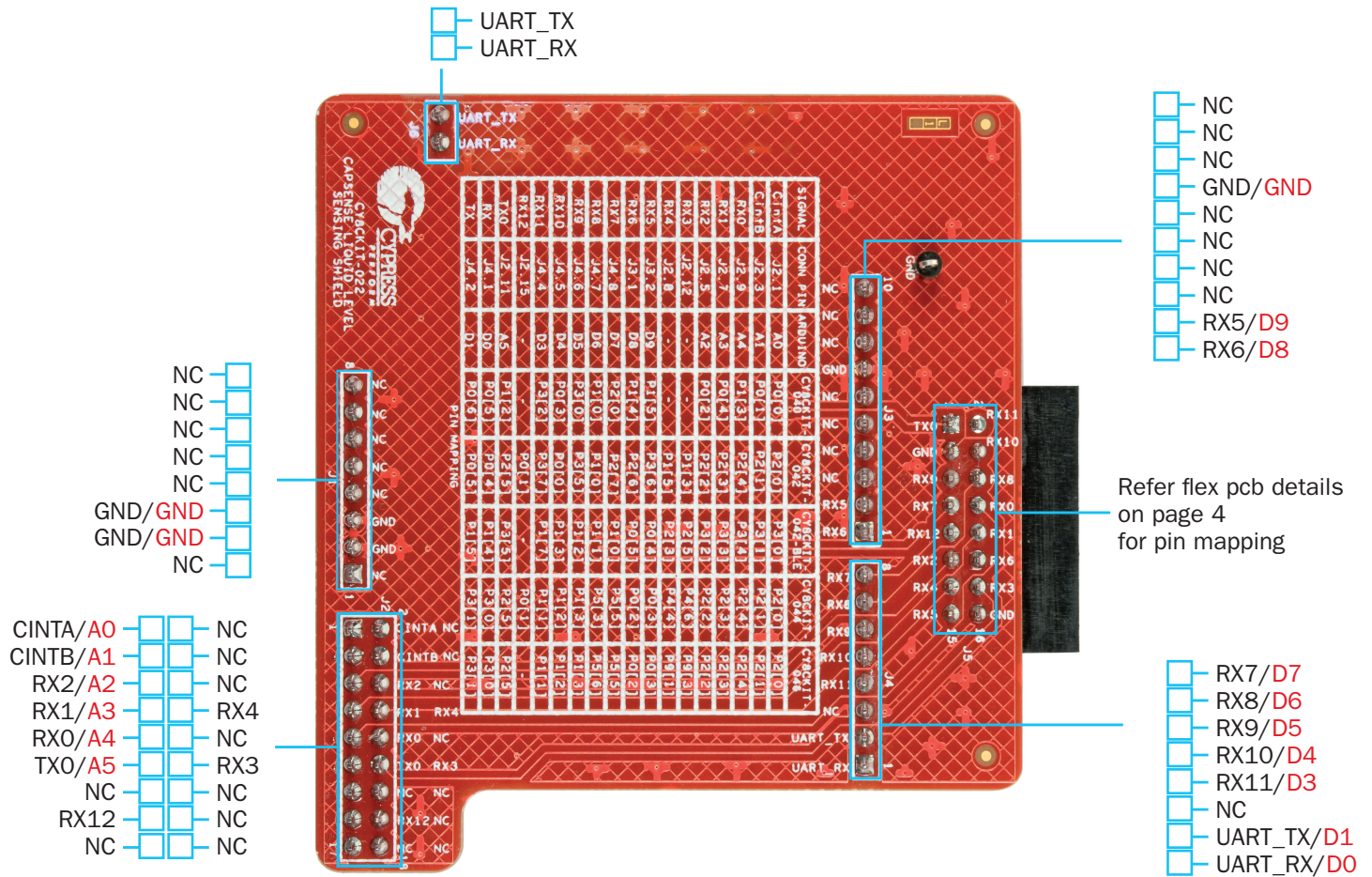
- With an empty liquid container, type 'cal' and press Enter
- Pour water in and out of the liquid container and observe the corresponding change in the liquid level reported in the serial terminal program

- Download the CY8CKIT-022 Liquid Level Sensing Shield documents and hardware design files from www.cypress.com/CY8CKIT-022



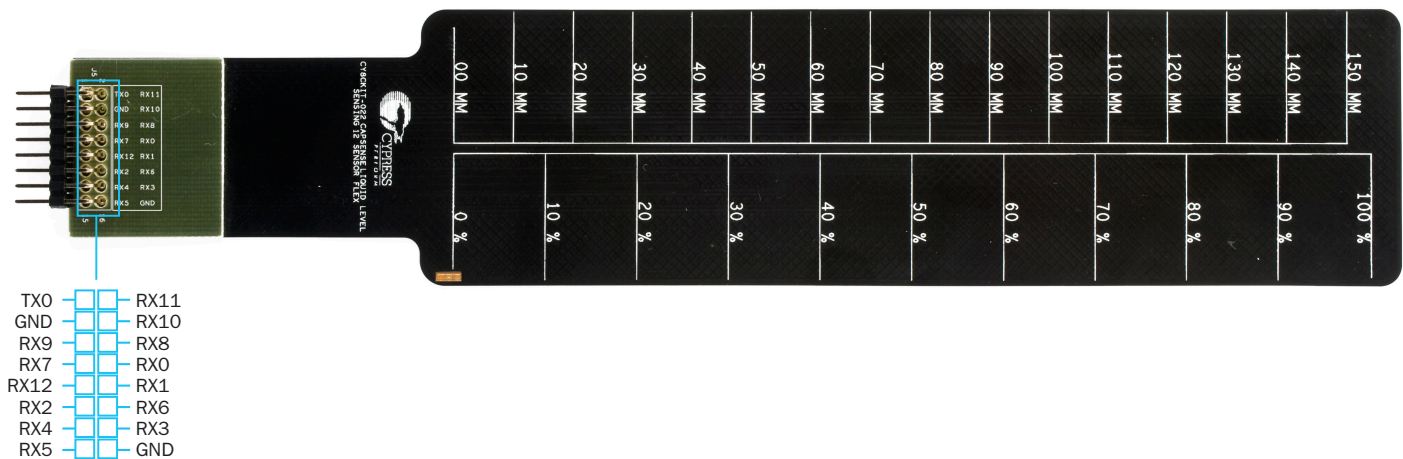
7

CY8CKIT-022 CapSense Liquid Level Sensing Shield Board details

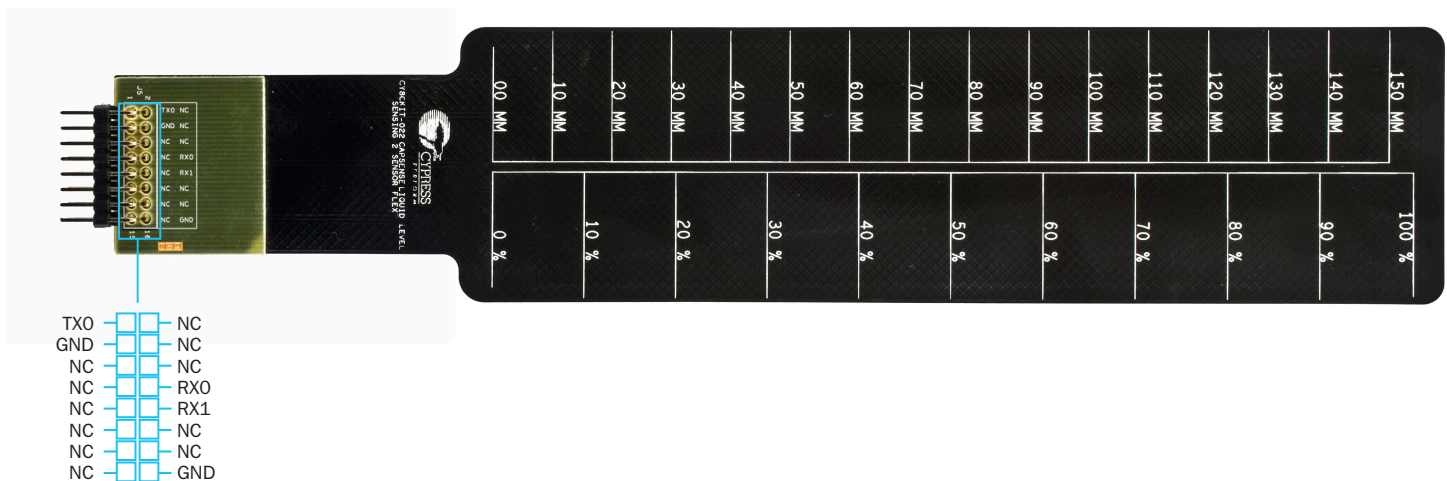


CAPSENSE® LIQUID LEVEL SENSING SHIELD

CY8CKIT-022 CapSense Liquid Level Sensing 12 Sensor Flex PCB details



CY8CKIT-022 CapSense Liquid Level Sensing 2 Sensor Flex PCB details



For latest information about this kit, visit www.cypress.com/CY8CKIT-022