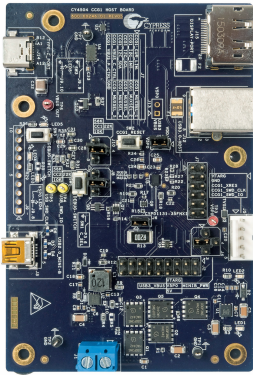
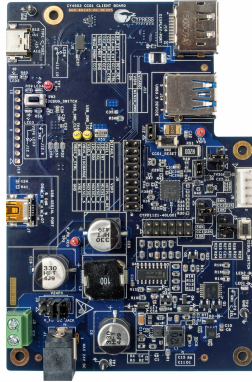


# CY4501 CCG1 DVK

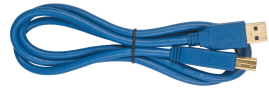
**Step 1:** Unpack kit contents. Download and install the latest kit setup file  
 "CY4501 CCG1 DVK COMPLETE SETUP" from [www.cypress.com/go/CY4501](http://www.cypress.com/go/CY4501)



CCG1 HOST BOARD

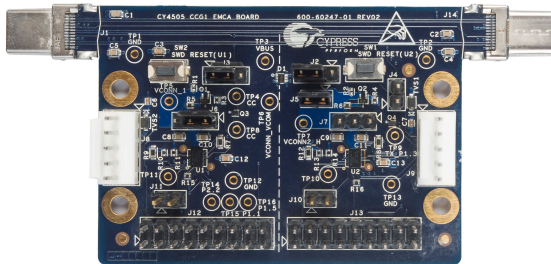


CCG1 CLIENT BOARD



ONE SUPERSPEED USB  
TYPE-A TO TYPE-B CABLE

TWO USB 2.0 TYPE-A TO  
MINI-B CABLES



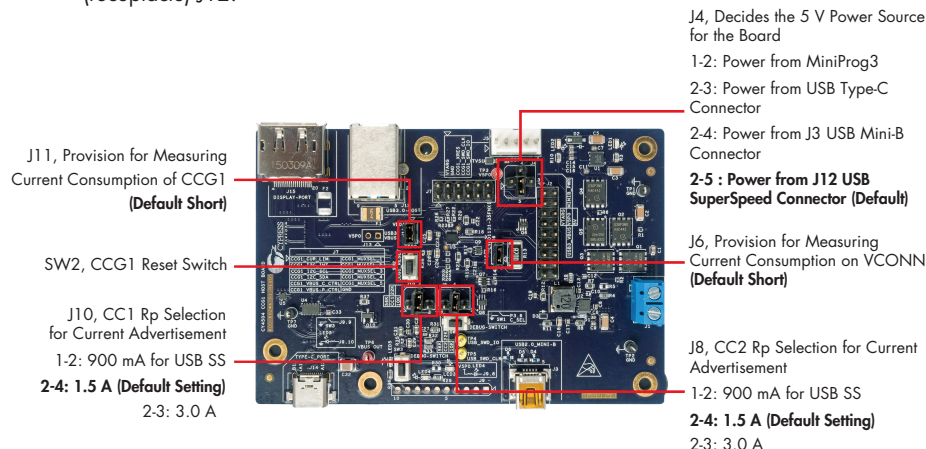
CCG1 EMCA BOARD



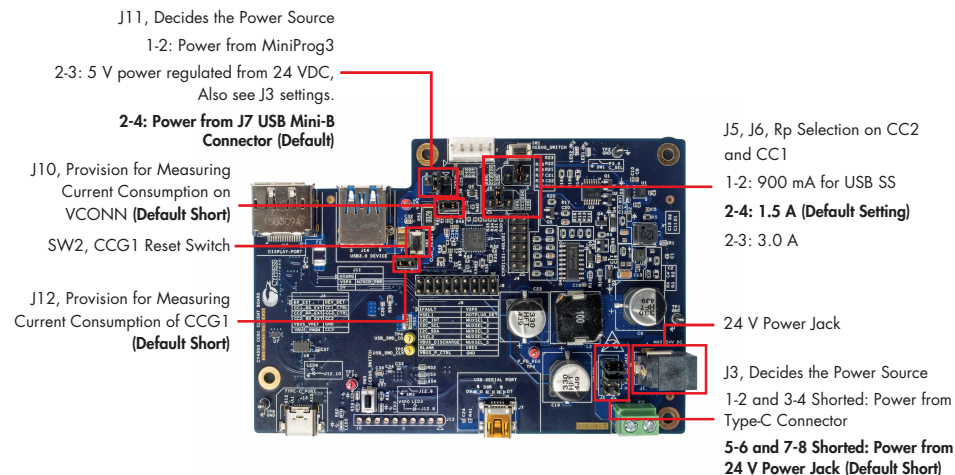
MINIPROG3

**NOTE:** 1. The Type-C receptacles and plugs used on the CCG1 boards are delicate parts and they need to be handled carefully. Avoid putting excess pressure on the Type-C receptacles and plugs during usage  
 2. Board revision number etched on the PCBA may differ from the image shown above.

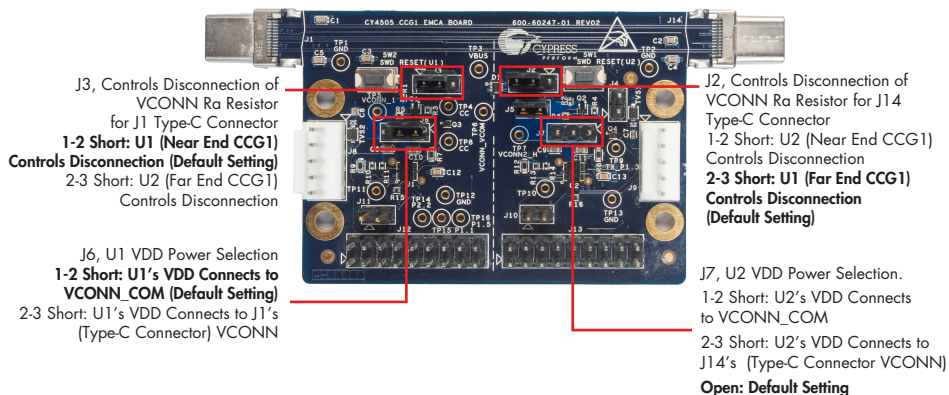
**Step 2:** Verify jumper settings on the CCG1 Host board. Use SuperSpeed USB Type-A to Type-B cable to connect a PC with the Host board's SuperSpeed USB Type-B connector (receptacle) J12.



**Step 3:** Verify jumper settings on the CCG1 Client board. Using a USB 2.0 Type-A to Mini-B cable, connect a PC to the USB Mini-B connector J7 of the Client board to provide power.

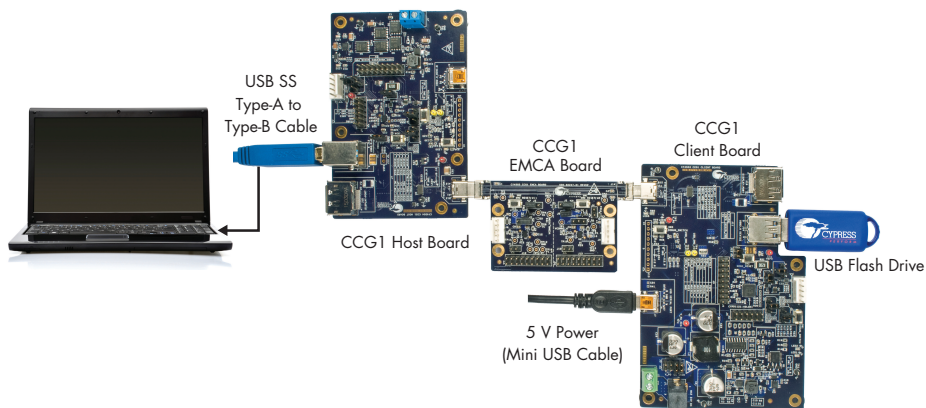


## Step 4: Verify jumper settings on the CCG1 EMCA board.



## Step 5: Connect one end of the EMCA board to the Host board and its other end to the Client board.

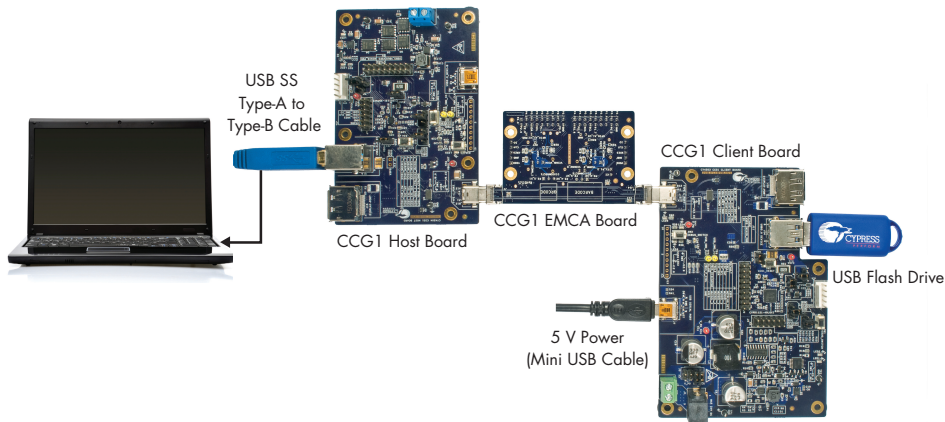
Plug a USB drive (not provided with the kit) into the Client board. Verify your setup as shown in the picture below. To evaluate SuperSpeed USB data transfers, it is recommended to use a SuperSpeed USB flash drive.



# CY4501 CCG1 DVK

**Step 6:** Observe enumeration of the USB drive connected to the Client board on the PC connected to the Host board. Observe the SuperSpeed USB data transfer speed by transferring large files.

**Step 7:** Disconnect the EMCA board from host and client boards. Repeat the connection sequence in Step 5 with the EMCA board flipped upside down.



**Step 8:** Observe enumeration of the USB drive connected to the Client board on the PC connected to the Host board even with the EMCA board flipped. Also, observe the SuperSpeed USB data transfer speed by transferring large files. This demonstrates orientation adjustment of the Type-C interface. This step can be repeated with the EMCA board in any other orientation.

**Step 9:** For more details, refer to the *CY4501 CCG1 Development Kit Guide.pdf* located at C:\Program Files (x86)\Cypress\CY4501 CCG1 DVK\1.0\Documentation for 64-bit Windows operating systems or C:\Program Files\Cypress\CY4501 CCG1 DVK\1.0\Documentation for 32-bit Windows operating systems.

For the latest information about this kit, visit [www.cypress.com/go/CY4501](http://www.cypress.com/go/CY4501)