

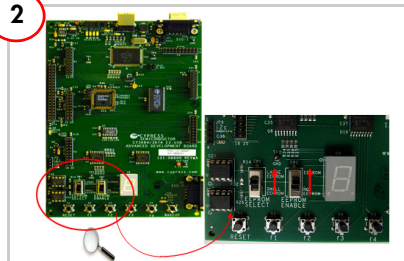
CY3686 EZ-USB® NX2LP-Flex™ DEVELOPMENT KIT QUICK START GUIDE

1



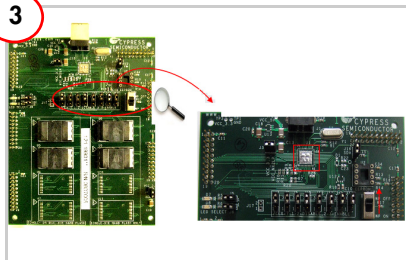
Unpack the kit contents. Using the CD/DVD provided in the kit, install the kit contents and Keil uVision IDE.

2



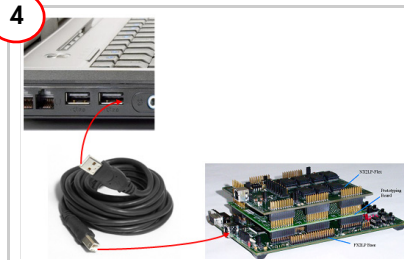
Set the switches on the FX2LP base board. SW2 is set to the EEPROM position and SW1 is set to the large EEPROM position.

3



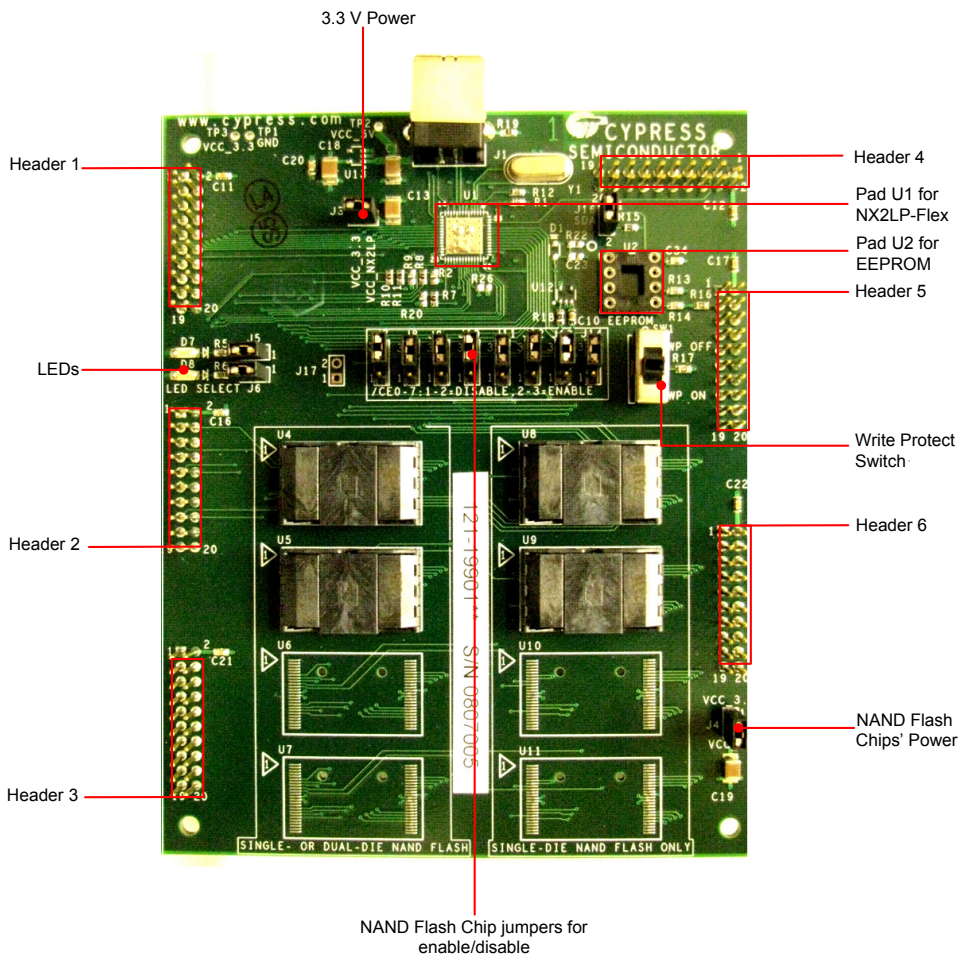
Ensure jumpers J3:J14 and J16 are enabled, write protect switch SW1 is in the OFF position, and the NX2LP IC pad U1 is unpopulated.

4



Stack up the FX2LP base board, the prototype board (optional), and the NX2LP flex board. Connect it to the host PC. The device enumerates as a removable drive in 'My Computer'. Try transferring data to and from the drive.

CY3686 NX2LP Flex Board Details



For the latest information about this kit visit
www.cypress.com/go/CY3686

