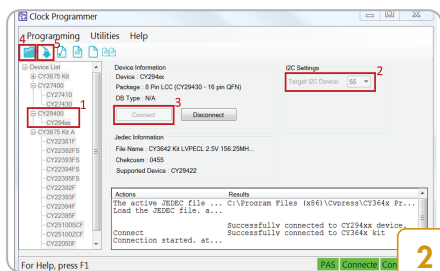
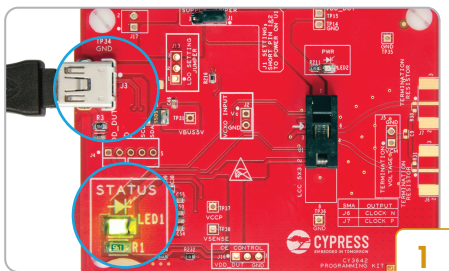


CY3642 PROGRAMMING KIT

The CY3642 Programming Kit enables quick and easy Programming of Cypress's High Performance Programmable Oscillator (CY29421, CY29422)

Kit Contents:

1. CY3642 Programming Board
2. USB Standard-A to Mini-B cable
3. Quick Start Guide (this document)
4. IC CY29422FLXI
(placed inside the socket)



- Download and install the latest kit software onto your PC from www.cypress.com/CY364X
- Connect the board to your PC using the provided USB cable
- The Status LED (Green) turns ON after the kit driver enumeration is complete

Steps to successfully program the clock device using this Programming kit.

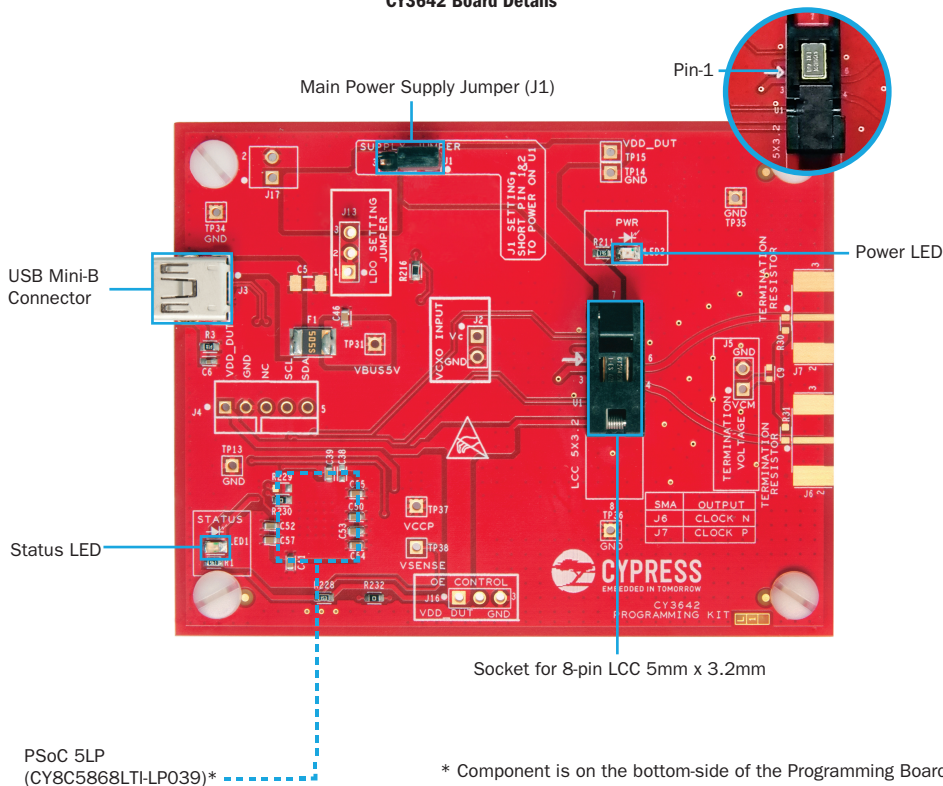
- Ensure default Jumper setting as mentioned in Table 0learf
- Run the Clock Programmer software tool
 1. Select CY294xx from the Device List
 2. Select 0x55 for target I²C address
 3. Click Connect
 4. Open the JEDEC file from <Install_Directory>\CY364x\Programming Kit\<version>\Firmware\CY3642\CY3642 Kit LVPECL 2.5V 156.25MHz
 5. Click Program
- While eFuse programming is underway you will notice Power LED (LED2) to glow Amber

CY3642 PROGRAMMING KIT

Table: Jumper Default Position

Jumper	Purpose	Default Position
J1	Power on CY29422	1 - 2

CY3642 Board Details



* Component is on the bottom-side of the Programming Board