

Using the CY3272 High Voltage 110-240V AC PLC Evaluation Kit with the PLC Control Panel Software Application



CAUTION: High Voltage (Risk of Electric Shock)

All work in powerline communications must be done with extreme care.

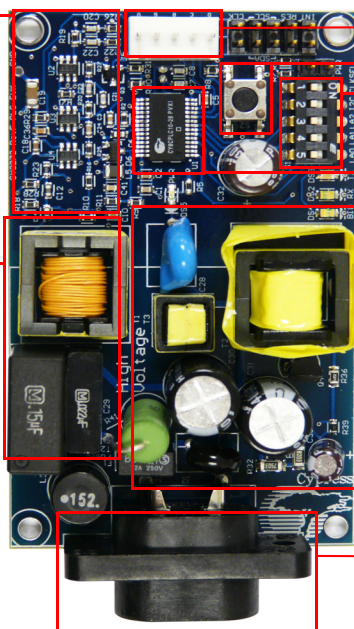
Caution must be exercised when using power supplies or power related equipment.

To evaluate this kit, a second PLC high voltage kit is required (CY3272 or CY3274). This guide assumes that two CY3272 kits are available. If the CY3274 kit is used as the second kit, refer to the Appendix of the PLC Control Panel GUI User's Guide for making the kit act as a CY3272. More information on the GUI is described in step 4 on page 2.

CY3272 Top View

Transmit Amplifier and
Filtering

Transmit and
Receive Coupling
Circuit



I2C Male Header (J5)

Reset Button (S2)

Five DIP Switches (S1)

CY8CPLC10
(28-Pin SSOP)

High Voltage Section
with SMPS

Power Cable Connector (J7)

CY3272-HV PLC EVALUATION KIT

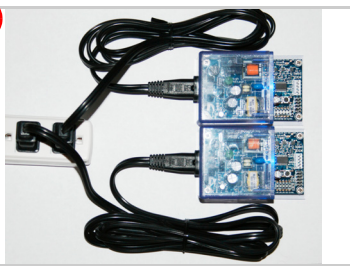
QUICK START GUIDE

1



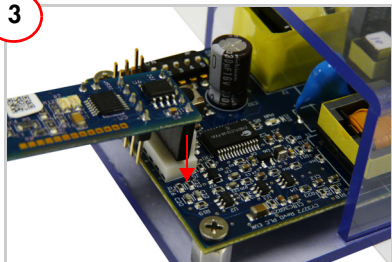
Connect the power cable from the AC mains to AC power connector on the first CY3272 board (node one). The blue LED turns on.

2



Connect another power cable from the mains to AC power connector on the second CY3272 board (node two). The blue LED turns on.

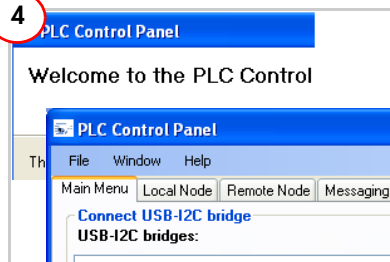
3



Attach one end of the USB-I2C Bridge to header J5 on node one. With the mini USB cable, connect the bridge to the PC. The green LED must turn on. Connect a jumper shunt to header J1 on the bottom of the bridge.

Note: If the USB-I2C bridge was shipped before September 2011, connect only one bridge for each PC. For more details, refer to Section 1.3 in the PLC Control Panel User's Guide.

4



1. Install and run the PLC Control Panel GUI from the CY3272 kit CD. Download the latest revision from the software and drivers link at www.cypress.com/go/plc.
2. Follow the instructions in Section 1.3 of the PLC Control Panel User's Guide to communicate between nodes one and node two. The user's guide can be opened from the GUI by clicking Help > Users Guide from the menu bar.

For the latest information about this kit visit
www.cypress.com/go/plc

