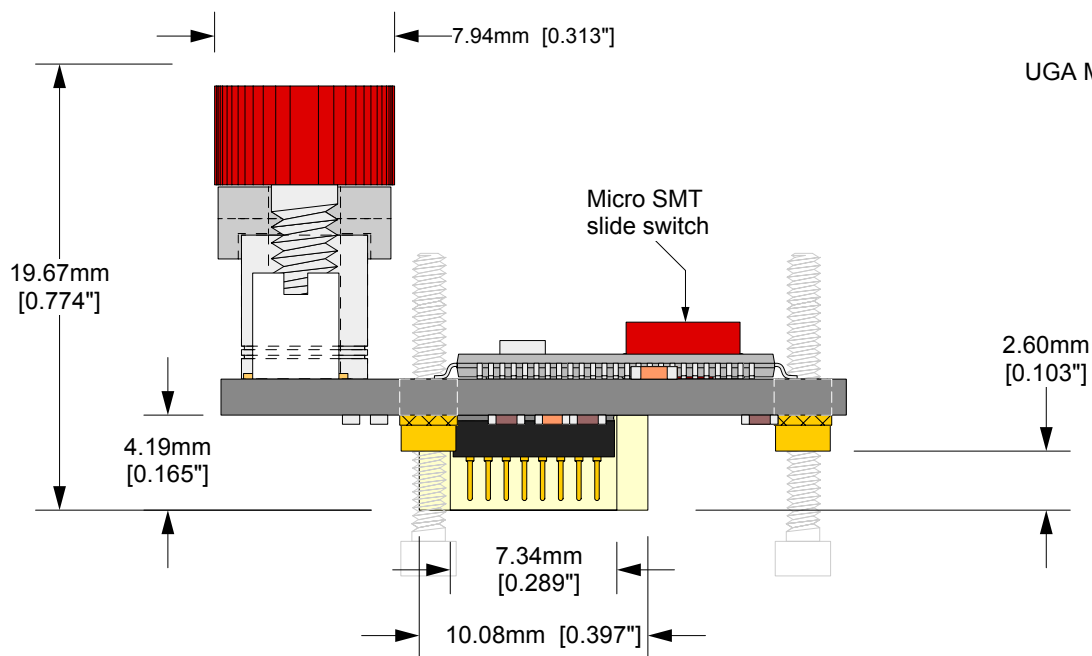
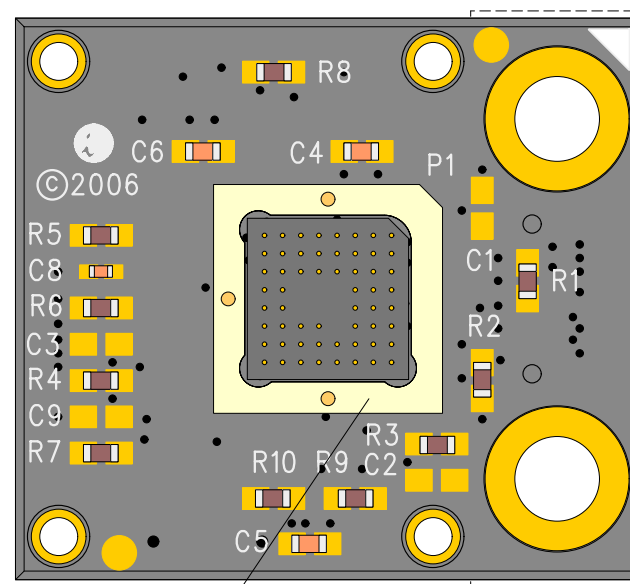
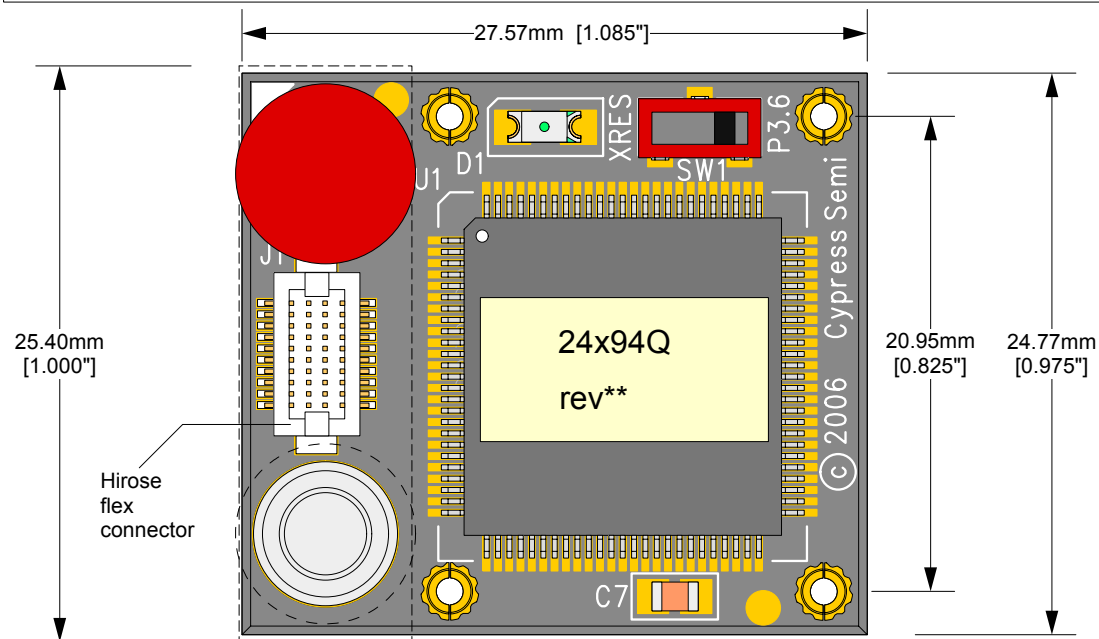


**PROPRIETARY INFORMATION:**

Information contained in this drawing is confidential. Copying, distributing or use in any matter, other than that specified by IRONWOOD ELECTRONICS, INC., is strictly prohibited and may be unlawful. If you have received this drawing in error, please destroy or return to IRONWOOD ELECTRONICS, INC. at the address listed below.



**RoHS Compliant**

**Description:** CY3250-24X94QFN POD  
100 pin TQFP OCD with mode switch for QFN56 and alternate QFN56 package. Hirose cable connector (P/N: DF12-5.0-20DP-0.5V-81) with retention mechanism included. Compatible with: SF-QFN56A-L-01, 56 pin, 0.5mm, 8mm body, QFN foot C5490, SSOP28 foot

Page: 1 of 2

**EA-8C24094-01 Drawing**

© 2005 IRONWOOD ELECTRONICS, INC.  
PO BOX 21151 ST. PAUL, MN 55121  
Tele: (651) 452-8100  
www.ironwoodelectronics.com

Status:

Scale: 3:1

Rev: R

Drawing: M. Tully

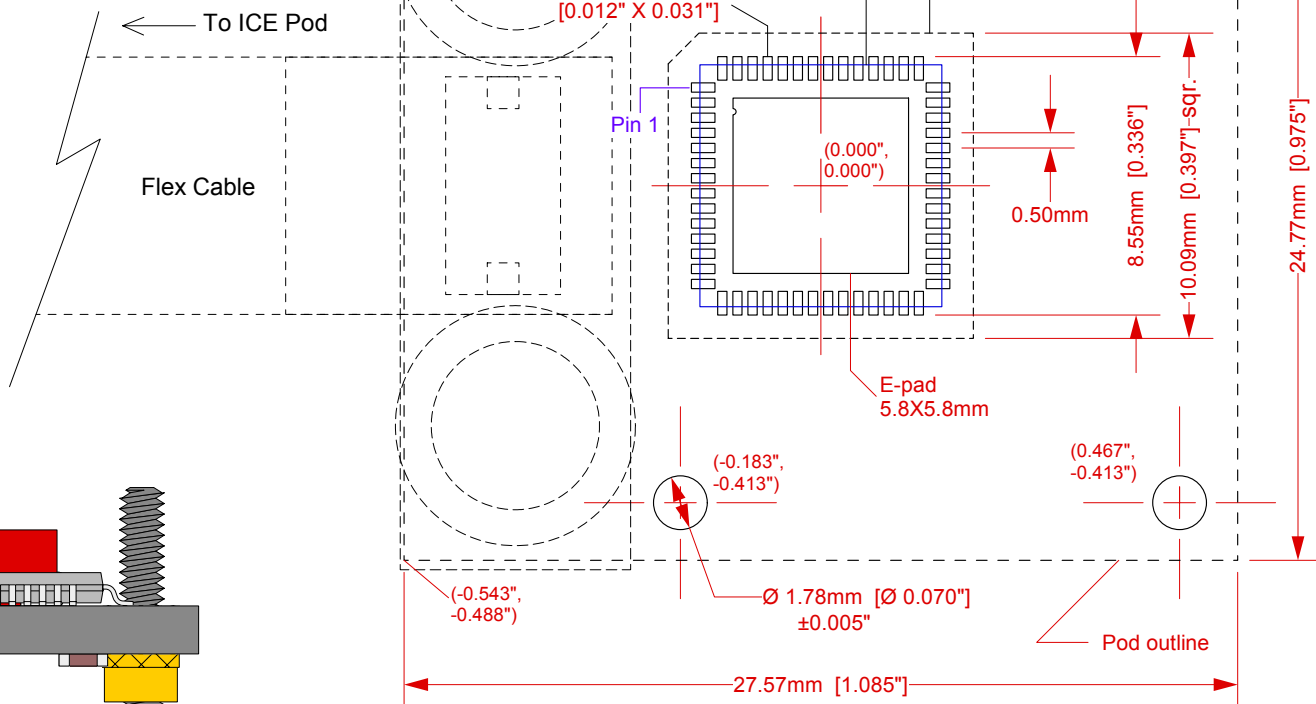
Date: 9/26/05

File: EA-8C24094-01 Dwg

Modified: 2/16/06, MT

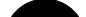
**Tolerances:** diameters  $\pm 0.03\text{mm}$  [ $\pm 0.001$ "],  
PCB perimeters  $\pm 0.13\text{mm}$  [ $\pm 0.005$ "],  
PCB thicknesses  $\pm 0.18\text{mm}$  [ $\pm 0.007$ "],  
pitches (from true position)  $\pm 0.08\text{mm}$  [ $\pm 0.003$ "],  
all other tolerances  $\pm 0.13\text{mm}$  [ $\pm 0.005$ "]  
unless stated otherwise. Materials and  
specifications are subject to change without notice.

If the target board can be designed to accomodate the strain relief hardware, layout the PCB with the pattern shown on the right. The layout shows the location of non-plated holes through the board relative to the QFN land pattern. If holes can not be added to the target board, the screws can be used as standoffs and sit on the top surface of the target PCB.



notes:

- 1) Do not place components within the shroud outline unless they have a 0.035" height or less off the target board and are outside the QFN package outline
- 2) All components under the POD outline must have a 0.190" height or or less from the top of target board to avoid components on the bottom of the POD board.

<b>EA-8C24094-01 Drawing</b>		Status:	Scale: <u>4:1</u>	Rev: S
 <p>© 2005 IRONWOOD ELECTRONICS, INC. PO BOX 21151 ST. PAUL, MN 55121 Tele: (651) 452-8100 www.ironwoodelectronics.com</p>	Drawing: M. Tully		Date: 9/26/05	
	File: EA-8C24094-01 Dwg		Modified: 4/24/06, MT	

**Tolerances:** diameters  $\pm 0.03\text{mm}$  [ $\pm 0.001$ "],  
PCB perimeters  $\pm 0.13\text{mm}$  [ $\pm 0.005$ "],  
PCB thicknesses  $\pm 0.18\text{mm}$  [ $\pm 0.007$ "],  
pitches (from true position)  $\pm 0.08\text{mm}$  [ $\pm 0.003$ "],  
all other tolerances  $\pm 0.13\text{mm}$  [ $\pm 0.005$ "]  
unless stated otherwise. Materials and  
specifications are subject to change without notice.