

**Please note that Cypress is an Infineon Technologies Company.**

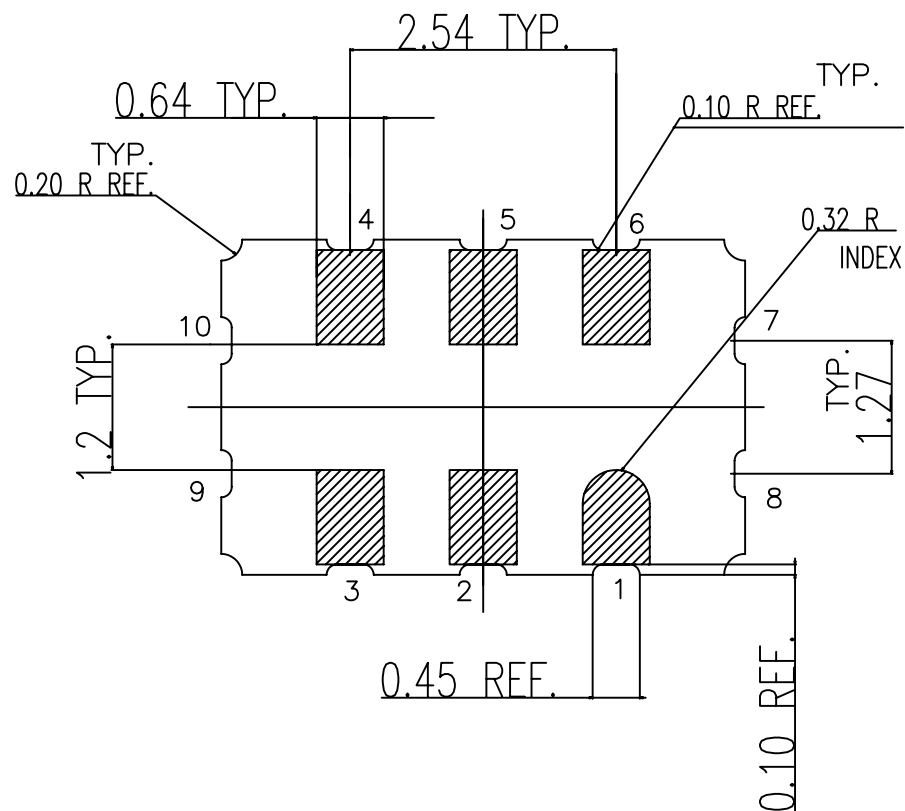
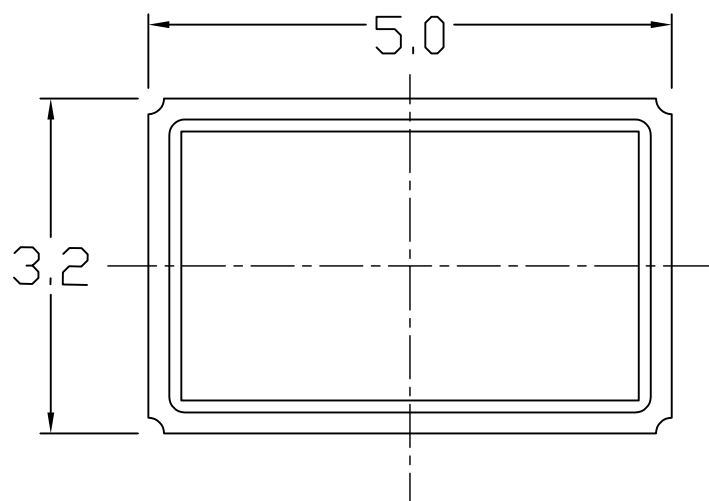
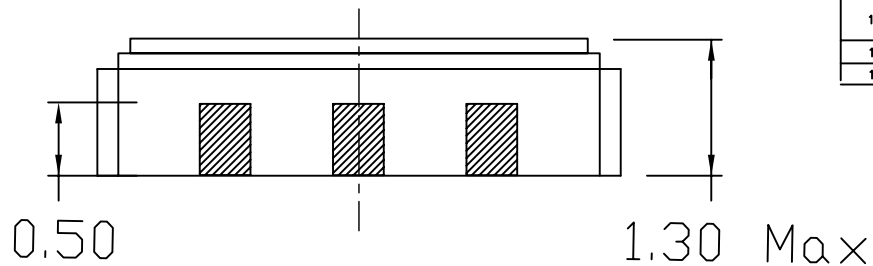
The document following this cover page is marked as “Cypress” document as this is the company that originally developed the product. Please note that Infineon will continue to offer the product to new and existing customers as part of the Infineon product portfolio.

**Continuity of document content**

The fact that Infineon offers the following product as part of the Infineon product portfolio does not lead to any changes to this document. Future revisions will occur when appropriate, and any changes will be set out on the document history page.

**Continuity of ordering part numbers**

Infineon continues to support existing part numbers. Please continue to use the ordering part numbers listed in the datasheet for ordering.




REVISIONS						
PAGE	ZONE	REV	ECN	DESCRIPTION	DATE	APPROVED
1	-	**	501266	NEW RELEASE	09/11/06	N/A
1	-	*A	2811399	CHANGE TEMPLATE, CHANGE TITLE FROM 6 LEAD-5.0X3.2MM CERAMIC LCC PACKAGE OUTLINE TO PACKAGE OUTLINE, 6L CERAMIC LCC 5.0X3.2X1.3 MM LZ06A	11/20/09	QAD
1	-	*B	3327864	Sunset review. Correct tolerance table.	07/25/11	MLA
1	-	*C	4495885	No change. Spec due for sunset review.	09/08/14	QAD

Dimensions in mm

Kyocera dwg ref KD-VA6432-A

Package Weight ~ 0.12 grams

THIS DRAWING CONTAINS INFORMATION WHICH IS THE PROPRIETARY PROPERTY OF CYPRESS SEMICONDUCTOR CORPORATION. THIS DRAWING IS RECEIVED IN CONFIDENCE AND ITS CONTENTS MAY NOT BE DISCLOSED WITHOUT WRITTEN CONSENT OF CYPRESS SEMICONDUCTOR CORPORATION.

UNLESS OTHERWISE SPECIFIED ALL DIMENSIONS ARE IN MILLIMETERS STANDARD TOLERANCES ARE: DECIMALS .X ± 0.15 .XX ± 0.05 .XXX + ANGLES ± 1°		DESIGNED BY	DATE	 CYPRESS Company Confidential		
		DRAWN BY	DATE			
		CHECKED BY	DATE			
		APPROVED BY	DATE			
MATERIAL	N/A	APPROVED BY	DATE	TITLE PACKAGE OUTLINE, 6L CERAMIC LCC 5.0X3.2X1.3 MM LZ06A		
		APPROVED BY	DATE			
FINISH	N/A			SIZE	PART NO.	DWG NO
				A	LZ06A	001-10044
				SCALED TO FIT	N/A	SHEET 1 OF 1