

Please note that Cypress is an Infineon Technologies Company.

The document following this cover page is marked as “Cypress” document as this is the company that originally developed the product. Please note that Infineon will continue to offer the product to new and existing customers as part of the Infineon product portfolio.

Continuity of document content

The fact that Infineon offers the following product as part of the Infineon product portfolio does not lead to any changes to this document. Future revisions will occur when appropriate, and any changes will be set out on the document history page.

Continuity of ordering part numbers

Infineon continues to support existing part numbers. Please continue to use the ordering part numbers listed in the datasheet for ordering.

Objective

This example project demonstrates the Running Speed and Cadence Sensor application workflow.

Overview

The design demonstrates the core functionality of the BLE Component configured as the Running Speed and Cadence Sensor (RSCS) device in the GATT Server role. The device simulates running/walking data measurements and sends them over the BLE Running Speed and Cadence Service.

Requirements

Tool: PSoC Creator™ 4.2

Programming Language: C (ARM® GCC 5.4-2016-q2-update)

Associated Parts: All PSoC 6 BLE parts

Related Hardware: CY8CKIT-062-BLE PSoC 6 BLE Pioneer Kit

Hardware Setup

This example uses the kit's default configuration. Refer to the [kit guide](#) to ensure the kit is configured correctly.

1. Connect the BLE Pioneer Kit to the computer's USB port.
2. Connect the BLE Dongle to one of the USB ports on the computer.

LED Behavior

If the VDDD voltage is set to less than 2.7 volts in the DWR settings **System** tab, only the red LED is used. The red LED blinks to indicate that the device is advertising. The red LED is OFF when the device is connected to a peer device. When the device is in Hibernate mode, the red LED stays ON.

LED behavior for VDDD Voltage > 2.7 volts is described in **Operation** section.

Software Setup

BLE Host Emulation Tool

This example requires the CySmart application. Download and install either the [CySmart Host Emulation Tool](#) PC application or the CySmart app for [iOS](#) or [Android](#). You can test behavior with any of the two options, but the CySmart app is simpler. Scan one of the following QR codes from your mobile phone to download the CySmart app.

iOS



Android



Terminal Tool

This example uses a terminal window. You must have terminal software, such as Tera Term, or PuTTY.

Operation

The project is intended to work with any BLE-compatible device (e.g. phone, tablet). The appropriate software with the Running Speed and Cadence Profile support should be installed on the Client OS. After the Client device is connected to the Running Speed and Cadence Sensor, the Client device enables notifications for the RSC Measurement Characteristic and the Sensor is sending notifications to the peer Client periodically. The period of the notifications is 3 seconds. The notifications sent from the Sensor contain “Instantaneous Speed”, “Instantaneous Cadence”, “Instantaneous Stride Length”, “Total Distance”, and “Walking or Running Status bit” fields.

The example project also periodically increases the value of “Instantaneous Cadence”, “Instantaneous Stride Length”, and, therefore, “Instantaneous Speed”. The increase period of values is 10 seconds. After the “Instantaneous Cadence” and “Instantaneous Stride Length” reaches their maximum allowed values, they will be reset back to the minimum values. By default, the project simulates the “Walking” profile, but it also can simulate the “Running” profile.

To switch to the “Running” profile, press and hold the **SW2** button on the [CY8CKIT-062 PSoC® 6 BLE Pioneer Kit](#). When the “Running” profile becomes active, the blue LED is turned ON indicating this. While connected to the Client and between the connection intervals, the device is put into low-power mode.

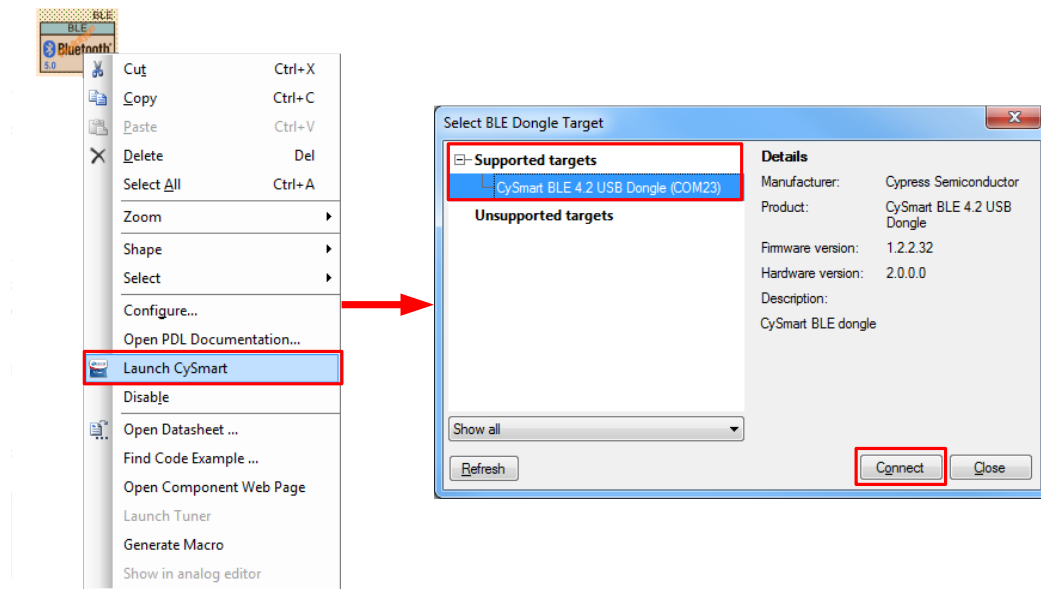
Refer to the [Running Speed and Cadence Profile](#) and [Running Speed and Cadence Service](#) specifications for more details.

You can use the CySmart app on a Windows PC, Android, or iOS BLE-compatible device as a Client for connection to the Weight Scale.

Operation Steps

1. Plug the CY8CKIT-062-BLE kit board into your computer's USB port.
2. Open a terminal window and perform following configuration: Baud rate – 115200, Parity – None, Stop bits – 1, Flow control – XON/XOFF. These settings must match the configuration of the PSoC Creator UART Component in the project.
3. Build the project and program it into the PSoC 6 MCU device. Choose **Debug > Program**. For more information on device programming, see PSoC Creator Help. Flash for both CPUs is programmed in a single program operation.
4. Observe the green LED blinks (VDDD configuration > 2.7) while the device is advertising, and the output in the terminal window.
5. Do the following to test example, using the CySmart Host Emulation Tool application as Running Speed and Cadence Service Client:
 - a. Connect the BLE Dongle to your Windows PC. Wait for the driver installation to complete, if necessary.
 - b. Launch the CySmart Host Emulation Tool by right-clicking on the BLE Component and selecting **Launch CySmart**. Alternatively, you can launch the tool by navigating to **Start > Programs > Cypress** and clicking on **CySmart**.
 - c. CySmart automatically detects the BLE dongle connected to the PC. Click **Refresh** if the BLE dongle does not appear in the **Select BLE Dongle Target** pop-up window. Click **Connect**, as shown in [Figure 1](#).

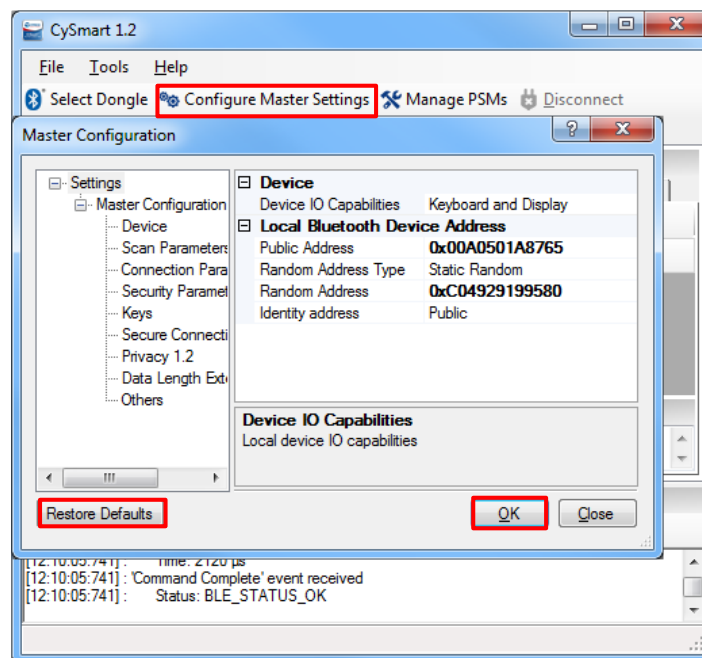
Figure 1. CySmart BLE Dongle Selection



Note: If the dongle firmware is outdated, you will be alerted with an appropriate message. You must upgrade the firmware before you can complete this step. Follow the instructions in the window to update the dongle firmware.

- d. Select **Configure Master Settings** and then click **Restore Defaults**, as Figure 2 shows. Then click **OK**.

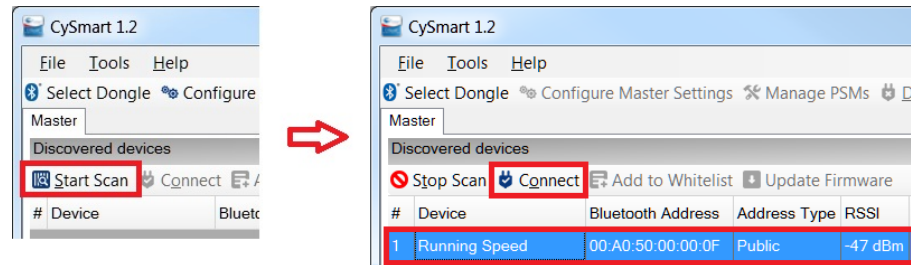
Figure 2. CySmart Master Settings Configuration



- e. Press the reset switch on the Pioneer Kit to start BLE advertisement if no device is connected or device is in Hibernate mode (red LED is on). Otherwise, skip this step.

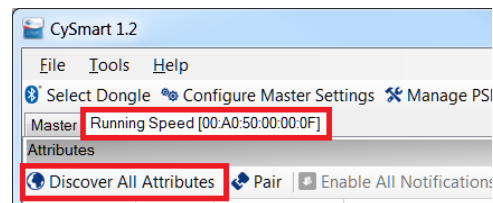
- f. On the CySmart Host Emulation Tool, click **Start Scan**. Your device name (configured as **Running Speed and Cadence Sensor**) should appear in the Discovered devices list, as [Figure 3](#) shows. Select the device and click **Connect** to establish a BLE connection between the CySmart Host Emulation Tool and your device.

Figure 3. CySmart Device Discovery and Connection



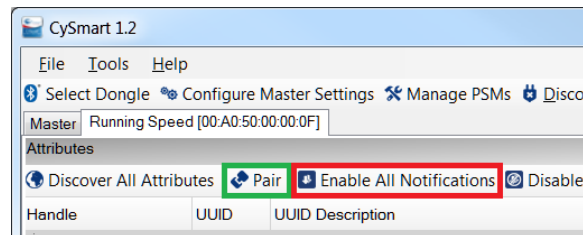
- g. Once connected, switch to the '**Running Speed**' device tab and '**Discover all Attributes**' on your design from the CySmart Host Emulation Tool, as shown in [Figure 4](#).

Figure 4. CySmart Attribute Discovery



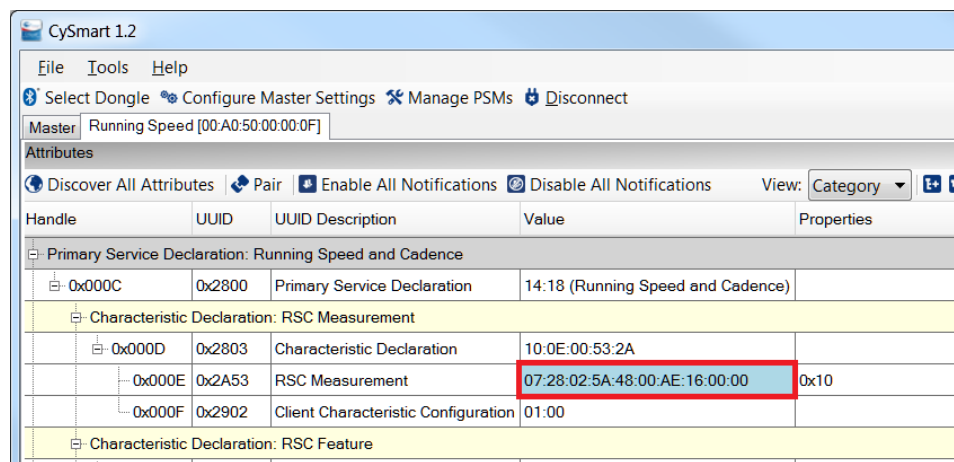
- h. Click **Pair** after discovery finishes, then **Enable All Notifications** in the CySmart app as shown in [Figure 5](#).

Figure 5. CySmart Pair and Enable All Notification



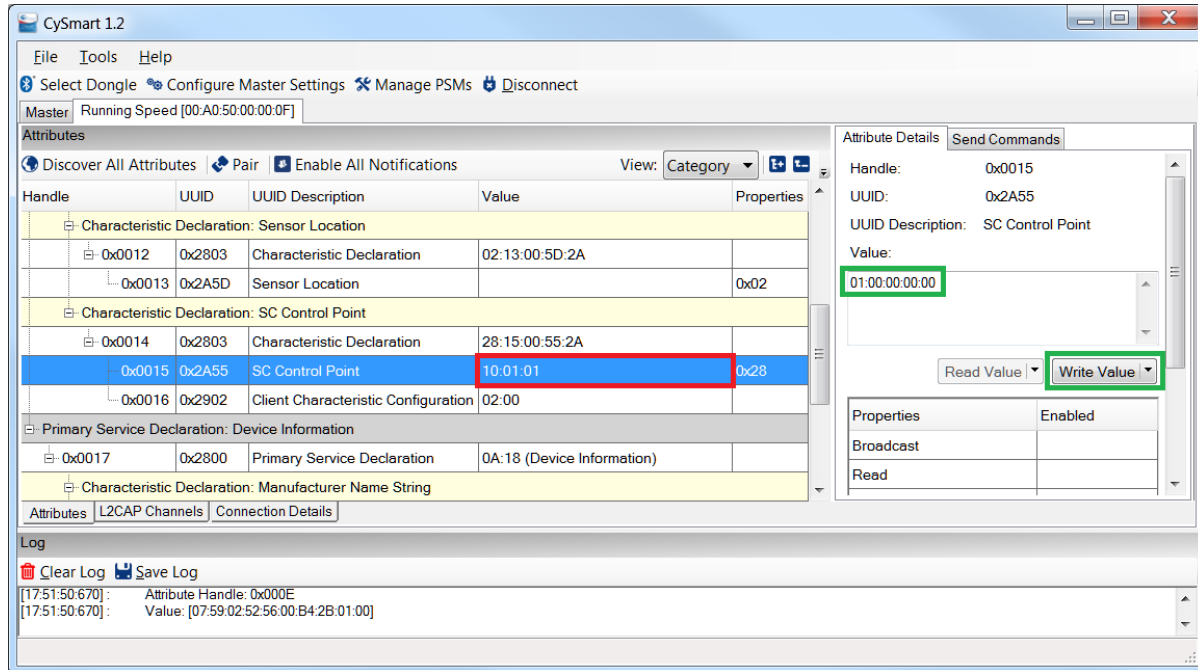
- i. Observe the Running Speed Reporter start notification of the RSC Measurement Characteristic:

Figure 6. RSC Measurement Characteristic Notification



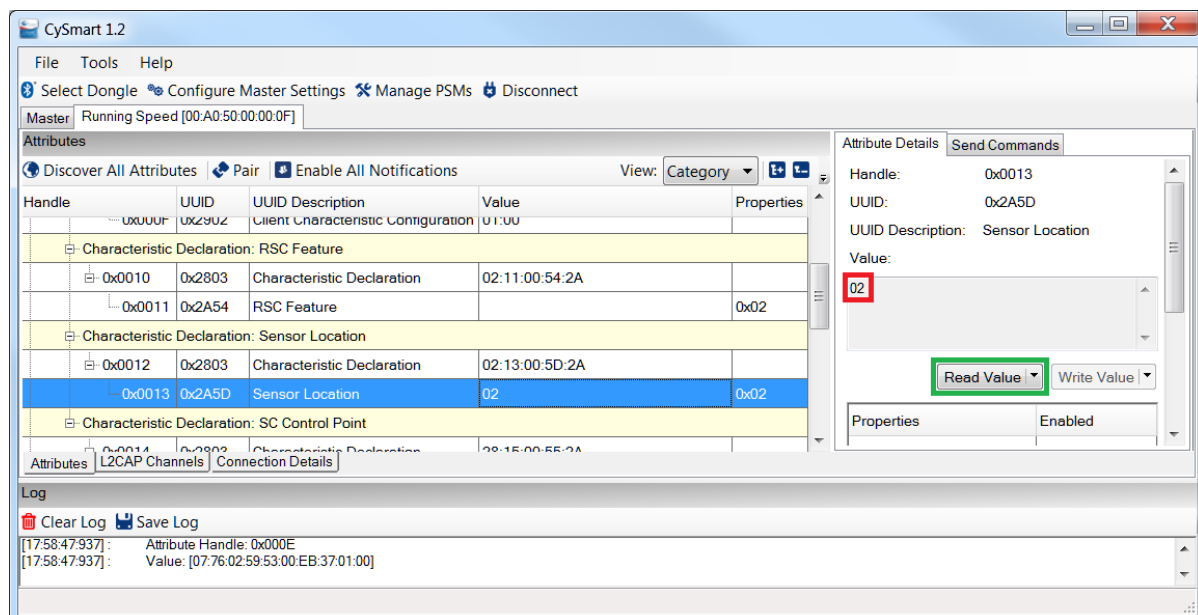
- j. Send the Set Cumulative Value Op Code to the SC Control Point. Select the SC Control Point and write the 01:XX:XX:XX:XX, where 01 is a Set Cumulative Procedure Op Code XX:XX:XX:XX is a 4-byte cumulative value, then press **Write Value**. Observe a response from the SC Control Point. The general format of a response: XX:YY:ZZ, where XX – the response Op Code, YY – the requested Op Code, ZZ – the status byte. The status byte can be set to one of the following values: 0x01 – Success, 0x02 – Op Code is not supported, 0x03 – Invalid parameter, 04 – Operation failed.

Figure 7. Set Cumulative Value Procedure Response



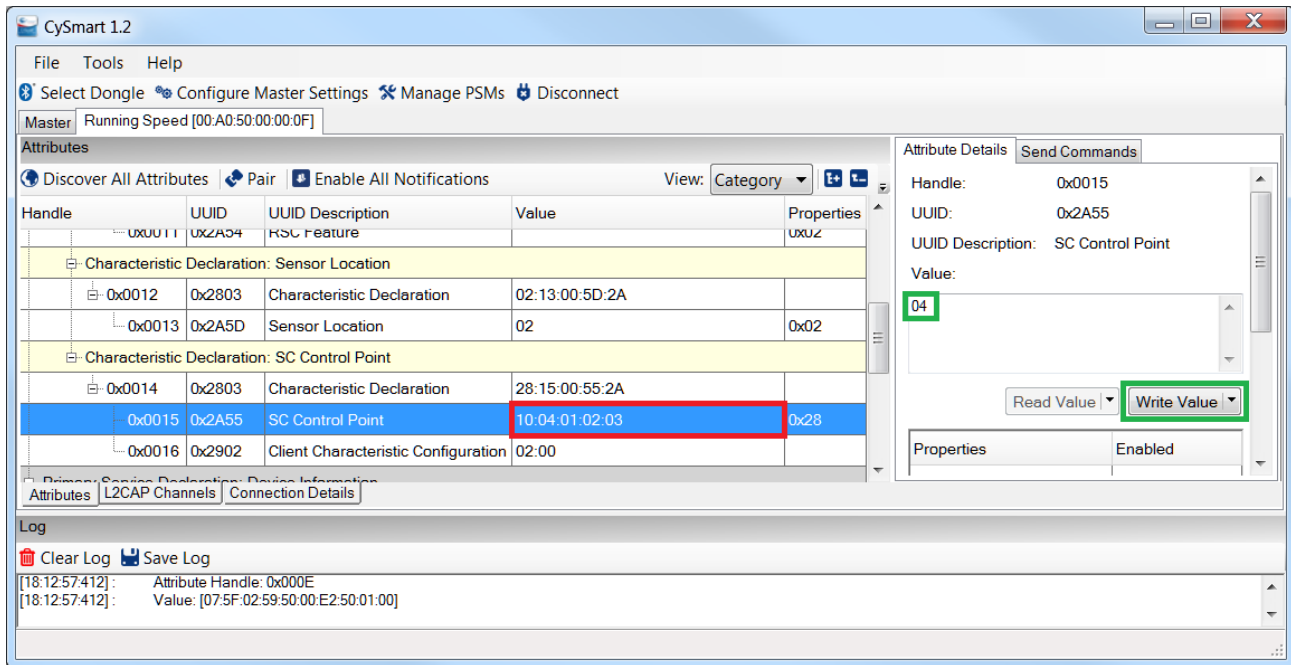
- k. Select the Sensor Location Characteristic and press **Read Value**. Observe the sensor location value:

Figure 8. Read Sensor Location Characteristic



- I. Send the Request Sensor Locations Op Code to the SC Control Point. Write 04 in the **Value** field, then press **Write Value**.

Figure 9. Request Sensor Locations Response



- m. Observe a response from the SC Control Point. If the Request Sensor Locations procedure is successful, the first three bytes of the response will have the same meaning as for the Set Cumulative Value procedure and all the remaining bytes are identifying the supported sensor locations. If the procedure fails, there will be only three bytes in a response.
 - n. Send the Update Sensor Location Op Code to the SC Control Point. Write 03:03 in the **Value** field then press **Write Value** and observe a response. Read the Sensor Location Characteristic value again and observe that the new sensor location was set.
6. Do the following to test example, using the CySmart mobile app as Running Speed and Cadence Service Client:
 - a. Launch CySmart mobile app and swipe down the screen to refresh the list of BLE devices available nearby. Make sure that the development kit is advertising (green LED is blinking): you may need to press the **SW1** button in order to wake up the device from Hibernate mode. Once the "Running Speed" device appears on the BLE devices list, connect to it and choose "Running Speed & Cadence Service" in the service selector.

Figure 10. CySmart iOS App Recognized BLE Kit as Running Speed Reporter

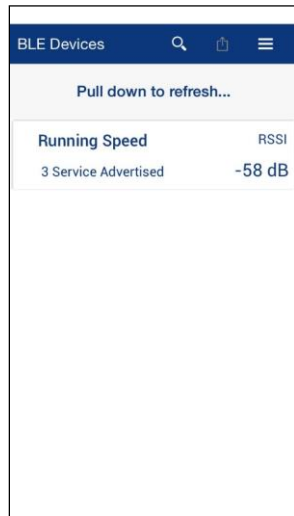
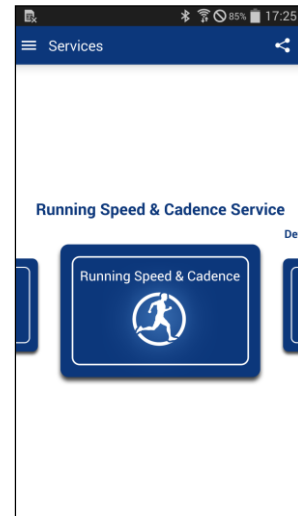


Figure 11. CySmart Android App Shows "Running Speed & Cadence Service" in Service Selector



- b. Once connected, the CySmart mobile application provides an interface for measurement of a distance being run, calories burnt and average speed based on the running speed and cadence values obtained from the development kit. To attain this functionality, enter the runner's weight into the appropriate textbox and press the **Start** button:

Figure 12. Running Speed and Cadence Service Interface on CySmart App Provides Possibility to Enter Runner's Weight

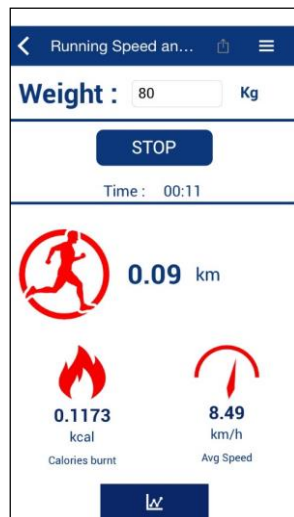
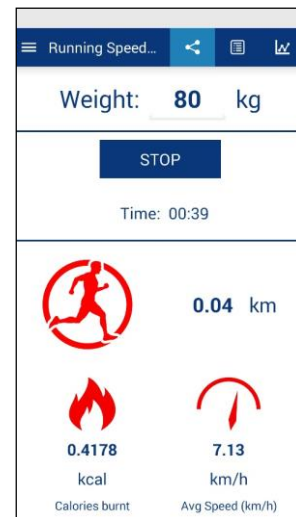


Figure 13. Cysmart Android App Simulates Measurement of Total Distance Being Run, amount of Calories Burnt and Average Speed



7. Use the UART debug port to view verbose messages:
 - a. The code example ships with the UART debug port enabled. To disable it, set the macro `DEBUG_UART_ENABLED` in `common.h` to `DISABLED` and rebuild the code.
 - b. The output of the debug serial port looks like the sample below.

BLE Running Speed and Cadence Profile Example Project

`CY_BLE_EVT_STACK_ON, StartAdvertisement`

`CY_BLE_EVT_SET_DEVICE_ADDR_COMPLETE`

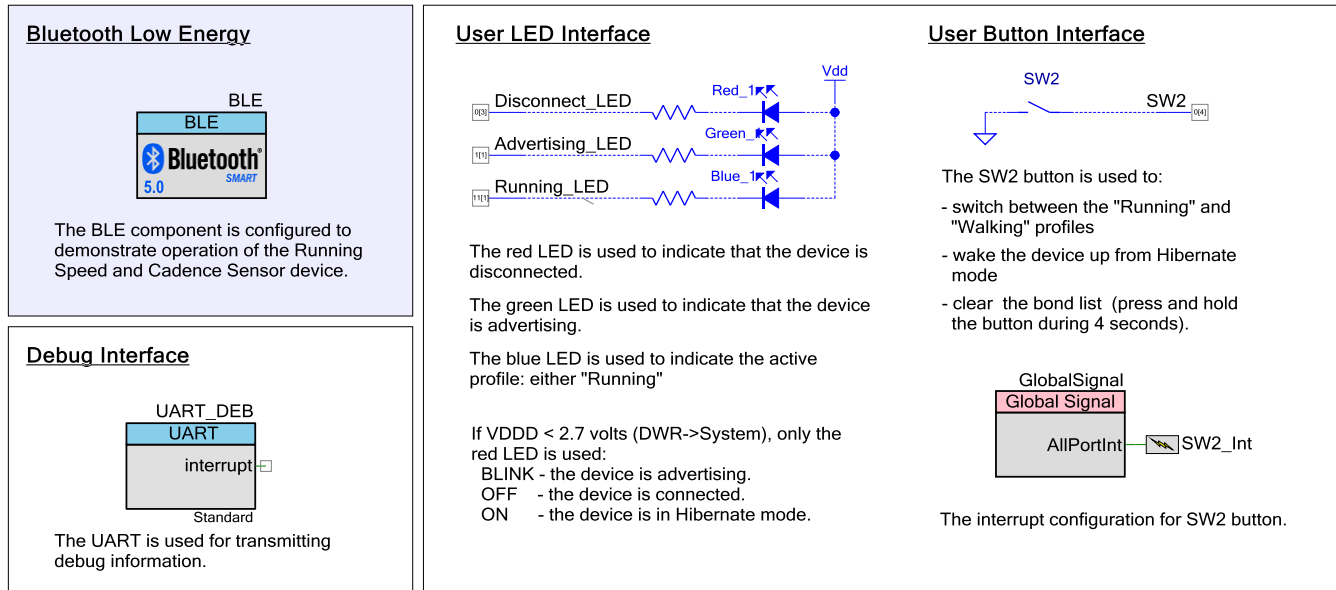
`CY_BLE_EVT_LE_SET_EVENT_MASK_COMPLETE`


```
CY_BLE_EVT_GET_DEVICE_ADDR_COMPLETE: 00a05000000f
CY_BLE_EVT_SET_TX_PWR_COMPLETE
CY_BLE_EVT_SET_TX_PWR_COMPLETE
CY_BLE_EVT_GATT_ADVERTISEMENT_START_STOP, state: 2
CY_BLE_EVT_GATT_KEYS_GEN_COMPLETE
CY_BLE_EVT_GATT_CONNECT_IND: 0, 10
CY_BLE_EVT_GATT_DEVICE_CONNECTED: connIntv = 7 ms
CY_BLE_EVT_GATT_XCNHG_MTU_REQ
CY_BLE_EVT_GATT_READ_CHAR_VAL_ACCESS_REQ: handle: 3
CY_BLE_EVT_GATT_AUTH_REQ: bdHandle=10, security=3, bonding=1, ekeySize=10, err=0
CY_BLE_EVT_GATT_SMP_NEGOTIATED_AUTH_INFO: bdHandle=10, security=1, bonding=1, ekeySize=10, err=0
CY_BLE_EVT_STACK_BUSY_STATUS: 1
CY_BLE_EVT_GATT_ENCRYPT_CHANGE: 0
CY_BLE_EVT_STACK_BUSY_STATUS: 0
CY_BLE_EVT_GATT_KEYINFO_EXCHANGE_CMPLT
CY_BLE_EVT_GATT_AUTH_COMPLETE: security:1, bonding:1, ekeySize:10, authErr 0
CY_BLE_EVT_PENDING_FLASH_WRITE
Store bonding data, status: 140001, pending: 1
Store bonding data, status: 140001, pending: 1
Store bonding data, status: 140001, pending: 1
Store bonding data, status: 0, pending: 0
CY_BLE_EVT_GATT_INDICATION_ENABLED
Store bonding data, status: 0, pending: 0
CY_BLE_EVT_GATT_READ_CHAR_VAL_ACCESS_REQ: handle: b
Indications for SC Control point Characteristic are enabled
Store bonding data, status: 0, pending: 0
CY_BLE_EVT_GATT_READ_CHAR_VAL_ACCESS_REQ: handle: 16
Notifications for RSC Measurement Characteristic are enabled
Store bonding data, status: 0, pending: 0
CY_BLE_EVT_GATT_READ_CHAR_VAL_ACCESS_REQ: handle: f
Notification is sent!
Cadence: 81, Speed: 5.92 km/h, Stride length: 61 cm, Total distance: 6 m, Status: Walking
Notification is sent!
Cadence: 81, Speed: 5.92 km/h, Stride length: 61 cm, Total distance: 8 m, Status: Walking
Notification is sent!
Cadence: 81, Speed: 5.92 km/h, Stride length: 61 cm, Total distance: 10 m, Status: Walking
Notification is sent!
Cadence: 82, Speed: 6.08 km/h, Stride length: 62 cm, Total distance: 12 m, Status: Walking
Notification is sent!
Cadence: 82, Speed: 6.08 km/h, Stride length: 62 cm, Total distance: 13 m, Status: Walking
Notification is sent!
Cadence: 82, Speed: 6.08 km/h, Stride length: 62 cm, Total distance: 15 m, Status: Walking
Notification is sent!
Cadence: 82, Speed: 6.08 km/h, Stride length: 62 cm, Total distance: 17 m, Status: Walking
Notification is sent!
Cadence: 83, Speed: 6.27 km/h, Stride length: 63 cm, Total distance: 19 m, Status: Walking
Notification is sent!
Cadence: 83, Speed: 6.27 km/h, Stride length: 63 cm, Total distance: 21 m, Status: Walking
Notification is sent!
Cadence: 83, Speed: 6.27 km/h, Stride length: 63 cm, Total distance: 23 m, Status: Walking
Notification is sent!
Cadence: 84, Speed: 6.44 km/h, Stride length: 64 cm, Total distance: 25 m, Status: Walking
Write to SC Control Point Characteristic occurred
Data length: 5
Received data: 1 0 0 0 0
Set cumulative value command was received.
Cy_BLE_RSCSS_SendIndication() succeeded
Indication Confirmation for SC Control point was received
Notification is sent!
Cadence: 86, Speed: 6.80 km/h, Stride length: 66 cm, Total distance: 1 m, Status: Walking
Notification is sent!
Cadence: 86, Speed: 6.80 km/h, Stride length: 66 cm, Total distance: 3 m, Status: Walking
Notification is sent!
Cadence: 86, Speed: 6.80 km/h, Stride length: 66 cm, Total distance: 5 m, Status: Walking
Notification is sent!
Cadence: 87, Speed: 6.98 km/h, Stride length: 67 cm, Total distance: 7 m, Status: Walking
```

Design and Implementation

The project demonstrates the core functionality of the BLE Component configured as the Running Speed and Cadence Sensor (RSCS) device in the GATT Server role. The device simulates running/walking data measurements and sends them over the BLE Running Speed and Cadence Service. [Figure 14](#) shows the top design schematic.

Figure 14. BLE Running Speed and Cadence Profile Code-Example Schematic



For operation the example project uses two callback functions: `AppCallback()` and `RscServiceAppEventHandler()`. One callback function (`AppCallback()`) is required for receiving generic events from the BLE Stack, and the second (`RscServiceAppEventHandler()`) is required for receiving events from the Running Speed and Cadence Service. The example project uses the UART Component for displaying debug information.

To start the example project operation, build it and program into the [CY8CKIT-062 PSoC® 6 BLE Pioneer Kit](#). After a startup, the BLE, UART and ISR Components are initialized and the BLE Component begins its operation. The RGB LED starts blinking with green. This indicates that the device has started advertising and it is available for the connection with a Central device. To advertise, the example project uses the packet structure as configured in the BLE Component Customizer.

This example requires an external GAP Central device configured in the GATT Client role for operation. To connect to the Running Speed and Cadence Sensor device, send a connection request when the device is advertising. After a 30-second period, if no Central device has connected to the Running Speed and Cadence Sensor, the Sensor device will stop advertising and the red LED is turned ON indicating the disconnection state.

While connected to a Client and between the connection intervals, the device is put into Deep Sleep mode.

Pin assignments

Pin assignments and connections required on the development board for supported kits are in [Table 1](#)

Table 1. Pin Assignment

Pin Name	Development Kit CY8CKIT-062	Comment
\UART_DEB:rx\	P5[0]	
\UART_DEB:tx\	P5[1]	
\UART_DEB:rts\	P5[2]	
\UART_DEB:cts\	P5[3]	
Advertising_LED	P1[1]	The green color of the RGB LED.

Pin Name	Development Kit CY8CKIT-062	Comment
Disconnect_LED	P0[3]	The red color of the RGB LED.
Running_LED	P11[1]	The blue color of the RGB LED.
SW2	P0[4]	

Components and Settings

Table 2 lists the PSoC Creator Components used in this example, how they are used in the design, and the non-default settings required so they function as intended.

Table 2. PSoC Creator Components

Component	Instance Name	Purpose	Non-default Settings
Bluetooth Low Energy (BLE)	BLE	The BLE component is configured to demonstrate operation of the Environmental Sensing Sensor device.	Refer to Parameter Settings section
Digital Input Pin	SW2	This pin is used to generate interrupts when the user button (SW2) is pressed.	[General tab] Uncheck HW connection Drive mode: Resistive Pull Up
Digital Output pin	Disconnect_LED Advertising_LED Connected_LED	These GPIOs are configured as firmware-controlled digital output pins that control LEDs.	[General tab] Uncheck HW connection Drive mode: Strong Drive
SysInt	SW2_Int	This Component is configured to extract interrupts from GlobalSignal.	[Basic tab] DeepSleepCapable = true
GSRef	GlobalSignal	This Component is used to detect if any of the interrupt enabled pins triggered an interrupt. It is a separate resource from the dedicated port interrupts, and it has the ability to wake up the chip from deep-sleep mode	[Basic tab] Global signal name: HWCombined Port Interrupt (AllPortInt)
UART (SCB)	UART_DEBUG	This Component is used to print messages on a terminal program.	Default

For information on the hardware resources used by a Component, see the Component datasheet.

Parameter Settings

The BLE component is configured as the Running Speed and Cadence Server in the GAP Peripheral role. Also, the Battery and Device Information Services are included.

Figure 15. General Settings

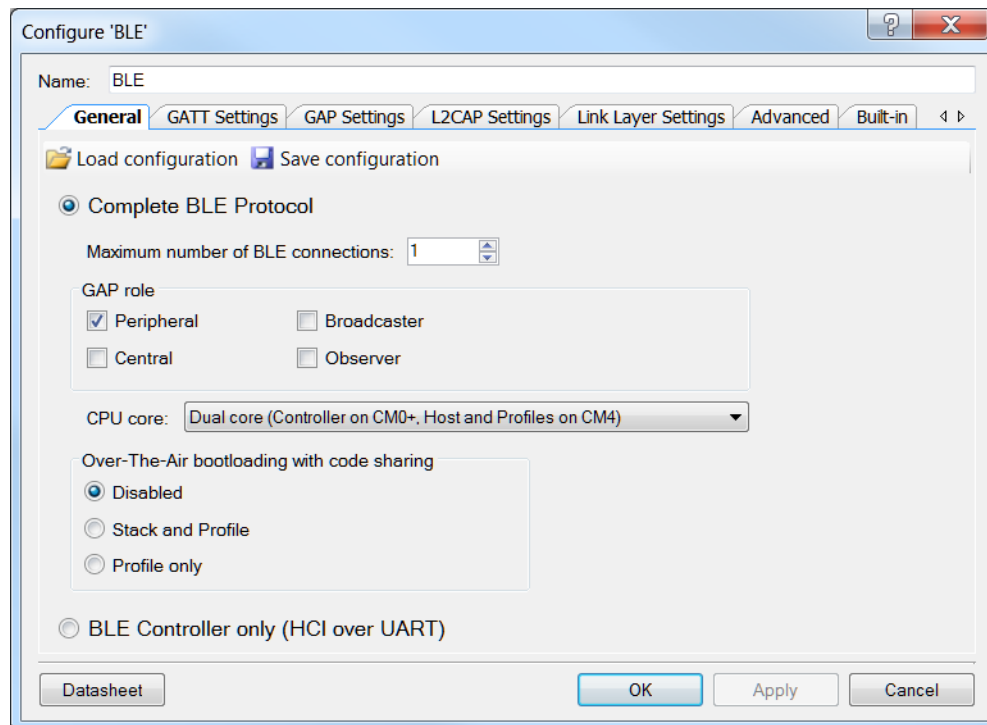


Figure 16. GATT Settings

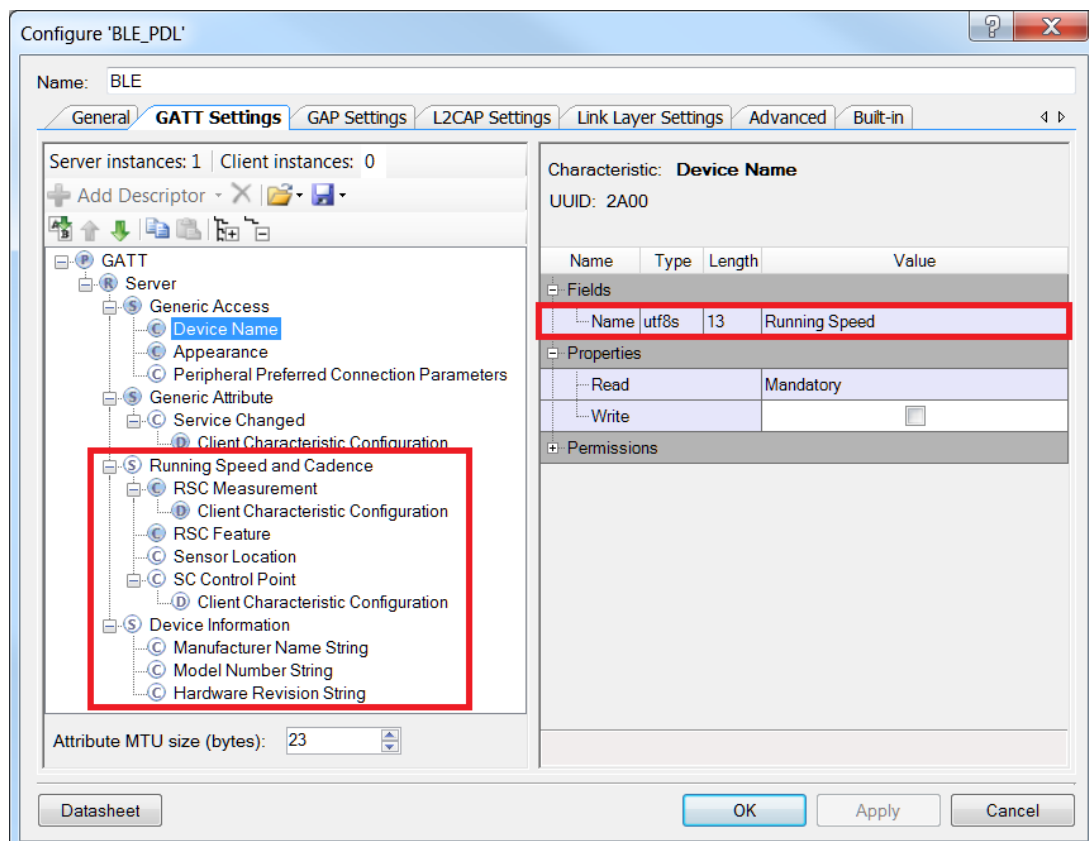
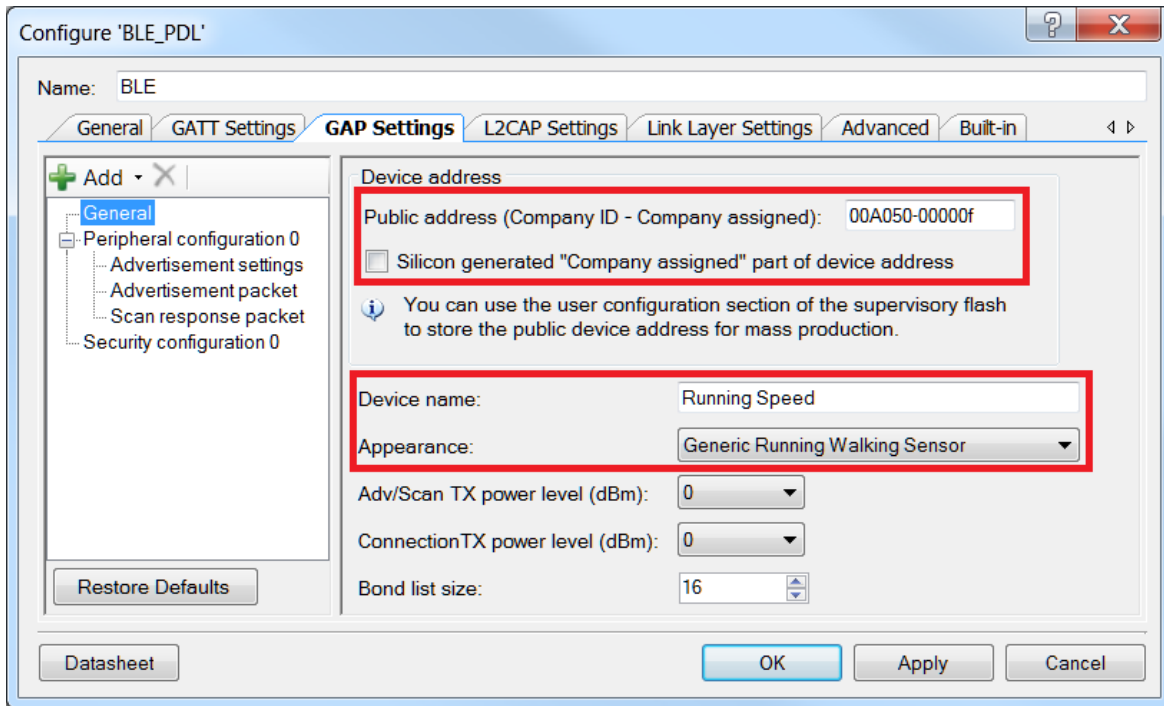


Figure 17. GAP Settings



Configure 'BLE_PDL'

Name: BLE

General | GATT Settings | **GAP Settings** | L2CAP Settings | Link Layer Settings | Advanced | Built-in

+ Add - X

General

- Peripheral configuration 0
 - Advertisement settings
 - Advertisement packet
 - Scan response packet
 - Security configuration 0

Restore Defaults

Datasheet

Device address

Public address (Company ID - Company assigned): 00A050-00000f

☐ Silicon generated "Company assigned" part of device address

You can use the user configuration section of the supervisory flash to store the public device address for mass production.

Device name: Running Speed

Appearance: Generic Running Walking Sensor

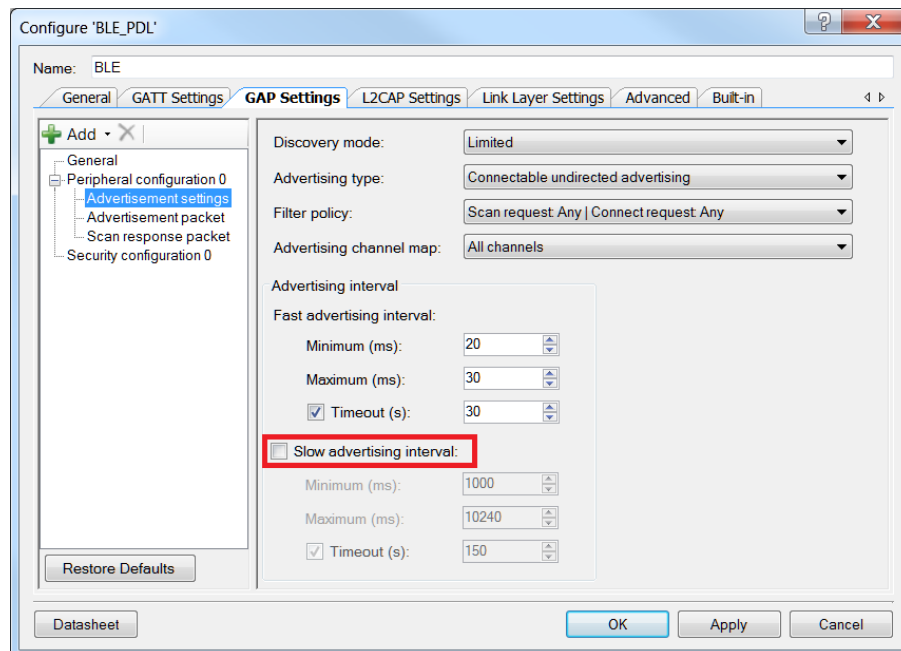
Adv/Scan TX power level (dBm): 0

Connection TX power level (dBm): 0

Bond list size: 16

OK Apply Cancel

Figure 18. GAP Settings: Advertisement Settings



Configure 'BLE_PDL'

Name: BLE

General | GATT Settings | **GAP Settings** | L2CAP Settings | Link Layer Settings | Advanced | Built-in

+ Add - X

General

- Peripheral configuration 0
 - Advertisement settings
 - Advertisement packet
 - Scan response packet
 - Security configuration 0

Restore Defaults

Datasheet

Discovery mode: Limited

Advertising type: Connectable undirected advertising

Filter policy: Scan request Any | Connect request Any

Advertising channel map: All channels

Advertising interval

Fast advertising interval:

Minimum (ms): 20

Maximum (ms): 30

☒ Timeout (s): 30

☐ Slow advertising interval:

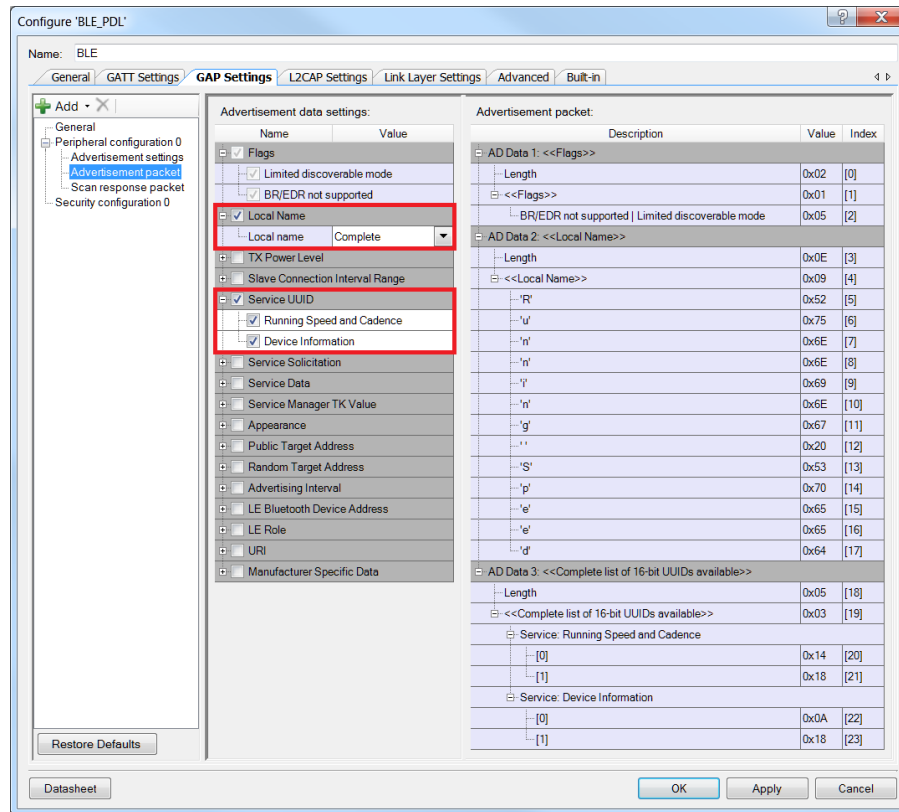
Minimum (ms): 1000

Maximum (ms): 10240

☒ Timeout (s): 150

OK Apply Cancel

Figure 19. GAP Settings: Advertisement Packet



Configure 'BLE_PDL'

Name: BLE

General | GATT Settings | **GAP Settings** | L2CAP Settings | Link Layer Settings | Advanced | Built-in

+ Add - X
 General
 Peripheral configuration 0
 Advertisement settings
 Advertisement packet
 Scan response packet
 Security configuration 0

Advertisement data settings:

Name	Value
<input checked="" type="checkbox"/> Flags	
<input checked="" type="checkbox"/> Limited discoverable mode	
<input checked="" type="checkbox"/> BR/EDR not supported	
<input checked="" type="checkbox"/> Local Name	Complete
Local name	Complete
TX Power Level	
Slave Connection Interval Range	
<input checked="" type="checkbox"/> Service UUID	
<input checked="" type="checkbox"/> Running Speed and Cadence	
<input checked="" type="checkbox"/> Device Information	
Service Solicitation	
Service Data	
Service Manager TK Value	
Appearance	
Public Target Address	
Random Target Address	
Advertising Interval	
LE Bluetooth Device Address	
LE Role	
URI	
Manufacturer Specific Data	

Advertisement packet:

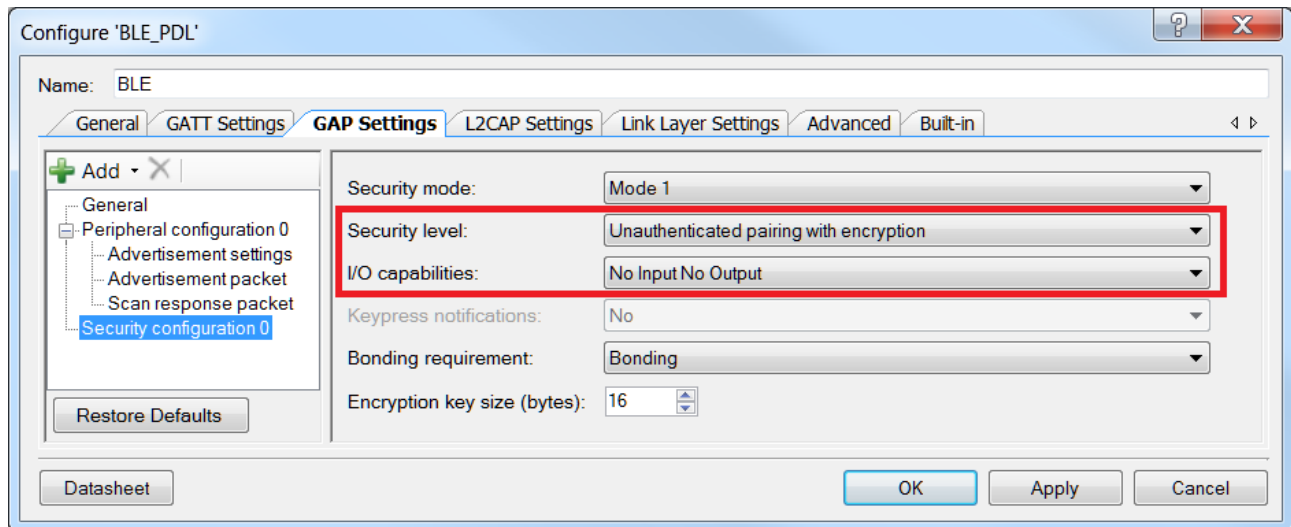
Description	Value	Index
AD Data 1: <<Flags>>		
Length	0x02	[0]
<<Flags>>	0x01	[1]
BR/EDR not supported Limited discoverable mode	0x05	[2]
AD Data 2: <<Local Name>>		
Length	0x0E	[3]
<<Local Name>>	0x09	[4]
'r'	0x52	[5]
'u'	0x75	[6]
'n'	0x6E	[7]
'n'	0x6E	[8]
'i'	0x69	[9]
'n'	0x6E	[10]
'g'	0x67	[11]
..	0x20	[12]
'S'	0x53	[13]
'p'	0x70	[14]
'e'	0x65	[15]
'e'	0x65	[16]
'd'	0x64	[17]
AD Data 3: <<Complete list of 16-bit UUIDs available>>		
Length	0x05	[18]
<<Complete list of 16-bit UUIDs available>>	0x03	[19]
Service: Running Speed and Cadence		
[0]	0x14	[20]
[1]	0x18	[21]
Service: Device Information		
[0]	0x0A	[22]
[1]	0x18	[23]

Restore Defaults

Datasheet

OK Apply Cancel

Figure 20. Security Settings



Configure 'BLE_PDL'

Name: BLE

General | GATT Settings | **GAP Settings** | L2CAP Settings | Link Layer Settings | Advanced | Built-in

+ Add - X
 General
 Peripheral configuration 0
 Advertisement settings
 Advertisement packet
 Scan response packet
 Security configuration 0

Restore Defaults

Datasheet

Security mode: Mode 1

Security level: Unauthenticated pairing with encryption

I/O capabilities: No Input No Output

Keypress notifications: No

Bonding requirement: Bonding

Encryption key size (bytes): 16

OK Apply Cancel

Switching the CPU Cores Usage

This section describes how to switch between different CPU cores usage (Single core/ Dual core) in the BLE PDL examples.

The BLE component has the CPU Core parameter that defines the cores usage. It can take the following values:

- Single core (Complete Component on CM0+) – only CM0+ core will be used.

- Single core (Complete Component on CM4) – only CM4 core will be used.
- Dual core (Controller on CM0+, Host and Profiles on CM4) – both cores will be used: CM0+ for the Controller and CM4 for the Host and Profiles.

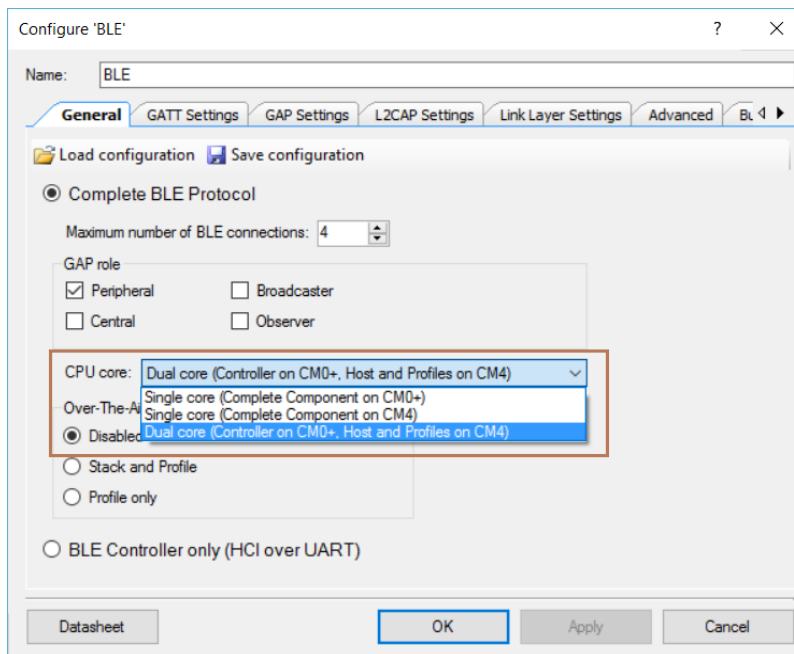
The BLE example structure allows easy switching between different CPU cores options. Important to remember:

- All application host-files must be run on the host core.
- The BLESS interrupt must be assigned to the core where the controller runs.
- All additional interrupts (SW2, MCWDT, etc.) used in the example must be assigned to the host core.

Steps for switching the CPU Cores usage:

1. In the BLE customizer **General** tab, select appropriate CPU core option.

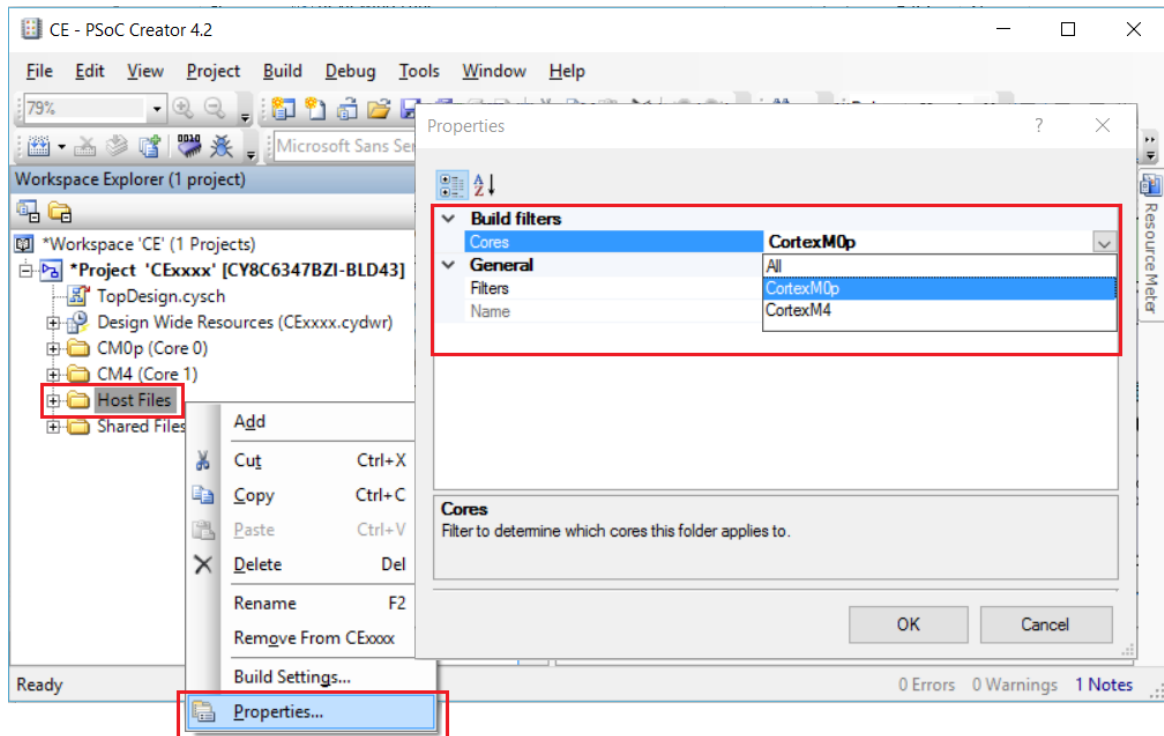
Figure 21. Select CPU Core



2. Identify the core on which host files will run. In the workspace explorer panel, right click **Host Files**, choose **Properties**. Set the **Cores** property corresponding to the CPU core chosen in step 1, as shown in Figure 22.

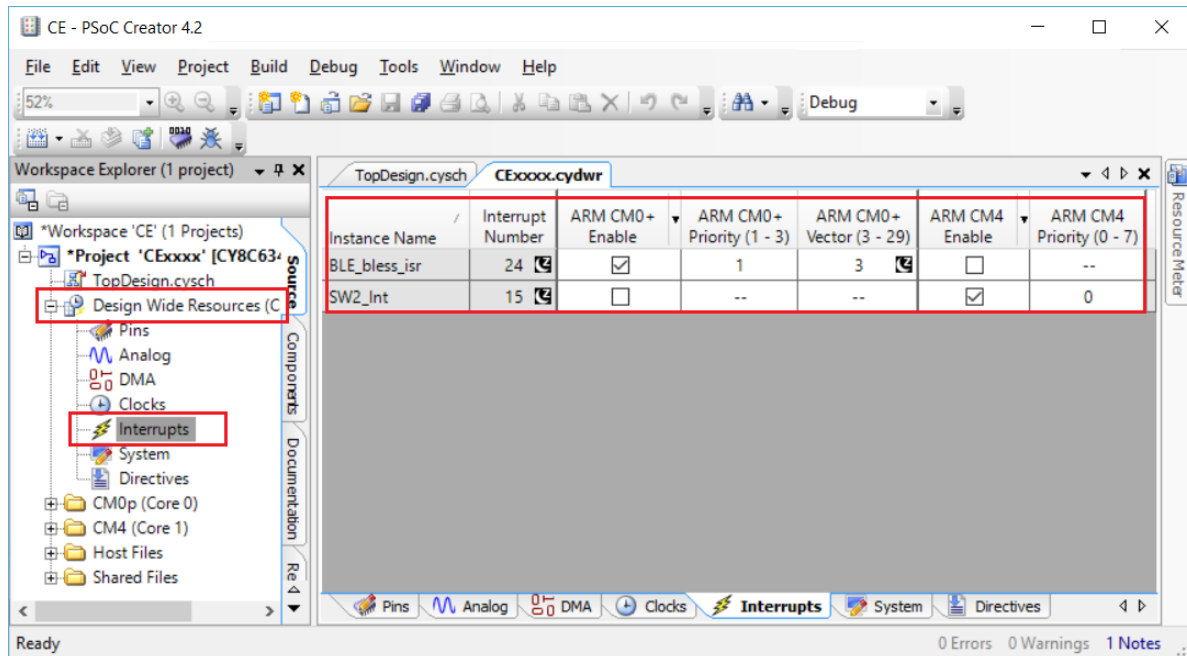
- for Single core (Complete Component on CM0+) option – CM0+
- for Single core (Complete Component on CM4) option – CM4
- for Dual core (Controller on CM0+, Host and Profiles on CM4) option – CM4

Figure 22. Change Core Properties



3. Assign the BLE_bless_isr and other peripheral (button – SW2, timer(s) etc.) interrupts to appropriate core in DWR-> interrupts tab:
 - for **Single core (Complete Component on CM0+)** option: BLE_bless_isr and peripheral interrupts on **CM0+**
 - for **Single core (Complete Component on CM4)** option: BLE_bless_isr and peripheral interrupts on **CM4**
 - for **Dual core (Controller on CM0+, Host and Profiles on CM4)** option: BLE_bless_isr interrupt on **CM0+**, other peripheral interrupts on **CM4**

Figure 23. Assign Interrupts



Reusing This Example

This example is designed for the CY8CKIT-062-BLE pioneer kit. To port the design to a different PSoC 6 MCU device and/or kit, change the target device using the Device Selector and update the pin assignments in the Design Wide Resources Pins settings as needed.

Related Documents

The following table lists all relevant application notes, code examples, knowledge base articles, device datasheets and Component datasheets.

Table 3. Related Documents

Application Notes		
AN210781	Getting Started with PSoC 6 MCU with Bluetooth Low Energy (BLE) Connectivity	Describes PSoC 6 BLE, and how to build a basic code example.
AN215656	PSoC 6 MCU Dual-CPU System Design	Presents the theory and design considerations related to this code example.
Software and Drivers		
CySmart – Bluetooth® LE Test and Debug Tool		CySmart is a Bluetooth® LE host emulation tool for Windows PCs. The tool provides an easy-to-use Graphical User Interface (GUI) to enable the user to test and debug their Bluetooth LE peripheral applications.
PSoC Creator Component Datasheets		
Bluetooth Low Energy (BLE_PDL) Component		The Bluetooth Low Energy (BLE_PDL) Component provides a comprehensive GUI-based configuration window to facilitate designing applications requiring BLE connectivity.
Device Documentation		
PSoC® 6 MCU: PSoC 63 with BLE. Datasheet.		PSoC® 6 MCU: PSoC 63 with BLE Architecture Technical Reference Manual
Development Kit (DVK) Documentation		
CY8CKIT-062-BLE PSoC 6 BLE Pioneer Kit		

Document History

Document Title: CE217642 - BLE Running Speed and Cadence Profile with PSoC 6 MCU with BLE Connectivity

Document Number: 002-17642

Revision	ECN	Orig. of Change	Submission Date	Description of Change
**	6091518	NPAL	05/14/2018	New spec

Worldwide Sales and Design Support

Cypress maintains a worldwide network of offices, solution centers, manufacturer's representatives, and distributors. To find the office closest to you, visit us at [Cypress Locations](#).

Products

ARM® Cortex® Microcontrollers	cypress.com/arm
Automotive	cypress.com/automotive
Clocks & Buffers	cypress.com/clocks
Interface	cypress.com/interface
Internet of Things	cypress.com/iot
Memory	cypress.com/memory
Microcontrollers	cypress.com/mcu
PSoC	cypress.com/psoc
Power Management ICs	cypress.com/pmic
Touch Sensing	cypress.com/touch
USB Controllers	cypress.com/usb
Wireless Connectivity	cypress.com/wireless

PSoC® Solutions

[PSoC 1](#) | [PSoC 3](#) | [PSoC 4](#) | [PSoC 5LP](#) | [PSoC 6 MCU](#)

Cypress Developer Community

[Community Forums](#) | [Projects](#) | [Videos](#) | [Blogs](#) | [Training](#) | [Components](#)

Technical Support

cypress.com/support

All other trademarks or registered trademarks referenced herein are the property of their respective owners.



Cypress Semiconductor
198 Champion Court
San Jose, CA 95134-1709

© Cypress Semiconductor Corporation, 2018. This document is the property of Cypress Semiconductor Corporation and its subsidiaries, including Spansion LLC ("Cypress"). This document, including any software or firmware included or referenced in this document ("Software"), is owned by Cypress under the intellectual property laws and treaties of the United States and other countries worldwide. Cypress reserves all rights under such laws and treaties and does not, except as specifically stated in this paragraph, grant any license under its patents, copyrights, trademarks, or other intellectual property rights. If the Software is not accompanied by a license agreement and you do not otherwise have a written agreement with Cypress governing the use of the Software, then Cypress hereby grants you a personal, non-exclusive, nontransferable license (without the right to sublicense) (1) under its copyright rights in the Software (a) for Software provided in source code form, to modify and reproduce the Software solely for use with Cypress hardware products, only internally within your organization, and (b) to distribute the Software in binary code form externally to end users (either directly or indirectly through resellers and distributors), solely for use on Cypress hardware product units, and (2) under those claims of Cypress's patents that are infringed by the Software (as provided by Cypress, unmodified) to make, use, distribute, and import the Software solely for use with Cypress hardware products. Any other use, reproduction, modification, translation, or compilation of the Software is prohibited.

TO THE EXTENT PERMITTED BY APPLICABLE LAW, CYPRESS MAKES NO WARRANTY OF ANY KIND, EXPRESS OR IMPLIED, WITH REGARD TO THIS DOCUMENT OR ANY SOFTWARE OR ACCOMPANYING HARDWARE, INCLUDING, BUT NOT LIMITED TO, THE IMPLIED WARRANTIES OF MERCHANTABILITY AND FITNESS FOR A PARTICULAR PURPOSE. To the extent permitted by applicable law, Cypress reserves the right to make changes to this document without further notice. Cypress does not assume any liability arising out of the application or use of any product or circuit described in this document. Any information provided in this document, including any sample design information or programming code, is provided only for reference purposes. It is the responsibility of the user of this document to properly design, program, and test the functionality and safety of any application made of this information and any resulting product. Cypress products are not designed, intended, or authorized for use as critical components in systems designed or intended for the operation of weapons, weapons systems, nuclear installations, life-support devices or systems, other medical devices or systems (including resuscitation equipment and surgical implants), pollution control or hazardous substances management, or other uses where the failure of the device or system could cause personal injury, death, or property damage ("Unintended Uses"). A critical component is any component of a device or system whose failure to perform can be reasonably expected to cause the failure of the device or system, or to affect its safety or effectiveness. Cypress is not liable, in whole or in part, and you shall and hereby do release Cypress from any claim, damage, or other liability arising from or related to all Unintended Uses of Cypress products. You shall indemnify and hold Cypress harmless from and against all claims, costs, damages, and other liabilities, including claims for personal injury or death, arising from or related to any Unintended Uses of Cypress products.

Cypress, the Cypress logo, Spansion, the Spansion logo, and combinations thereof, WICED, PSoC, CapSense, EZ-USB, F-RAM, and Traveo are trademarks or registered trademarks of Cypress in the United States and other countries. For a more complete list of Cypress trademarks, visit cypress.com. Other names and brands may be claimed as property of their respective owners.