

Please note that Cypress is an Infineon Technologies Company.

The document following this cover page is marked as “Cypress” document as this is the company that originally developed the product. Please note that Infineon will continue to offer the product to new and existing customers as part of the Infineon product portfolio.

Continuity of document content

The fact that Infineon offers the following product as part of the Infineon product portfolio does not lead to any changes to this document. Future revisions will occur when appropriate, and any changes will be set out on the document history page.

Continuity of ordering part numbers

Infineon continues to support existing part numbers. Please continue to use the ordering part numbers listed in the datasheet for ordering.

Objective

This example project demonstrates how to configure and use the Bluetooth Low Energy (BLE) Component APIs and an application layer callback.

Overview

This is a simple BLE example project that demonstrates how to configure and use the BLE Component APIs and an application layer callback. The Device Information Service is used as an example to demonstrate how to configure the BLE service characteristics in the BLE Component.

Requirements

Tool: PSoC Creator™ 4.2

Programming Language: C (Arm® GCC 5.4-2016-q2-update)

Associated Parts: All PSoC® 6 BLE parts

Related Hardware: CY8CKIT-062-BLE PSoC 6 BLE Pioneer Kit

Hardware Setup

This example uses the kit's default configuration. See the [kit guide](#) to ensure the kit is configured correctly.

1. Connect the BLE Pioneer Kit to the computer's USB port.
2. Connect the BLE Dongle to one of the USB ports on the computer.

LED Behavior for V_{DD} Voltage < 2.7 V

If the V_{DD} voltage is set to lesser than 2.7 V in the DWR settings **System** tab, only the red LED is used. The red LED blinks to indicate that the device is advertising. The red LED is OFF when the device is connected to a peer device. When the device is in Hibernate mode, the red LED stays ON.

Software Setup

BLE Host Emulation Tool

This example requires the CySmart application. Download and install either the [CySmart Host Emulation Tool](#) PC application or the CySmart app for [iOS](#) or [Android](#). You can test behavior with any of the two options, but the CySmart app is simpler. Scan one of the following QR codes from your mobile phone to download the CySmart app.

iOS



Android



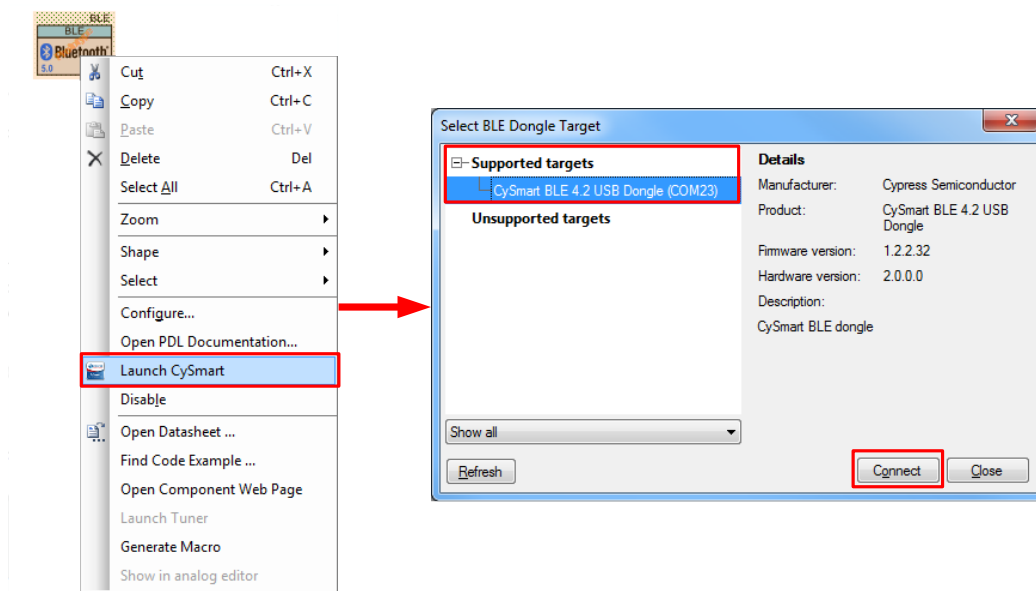
Operation

The green LED blinks to indicate that the device is advertising. The red LED turns ON to indicate that no client is connected to the device. When a client is connected successfully, the red and green LEDs are turned OFF.

Operation Steps

1. Plug the CY8CKIT-062-BLE kit board into your computer's USB port.
2. Build the project and program it into the PSoC 6 MCU device. Choose **Debug > Program**. For more information on device programming, see PSoC Creator Help. Flash for both CPUs is programmed in a single program operation.
3. Observe the green LED blinks while the device is advertising.
4. Do the following to the test example using the CySmart Host Emulation Tool application as a Device Information Service Client:
 - a. Connect the BLE Dongle to your Windows PC. Wait for the driver installation to complete, if necessary.
 - b. Right-click the BLE Component and select **Launch CySmart** to launch the CySmart Host Emulation Tool. Alternatively, you can navigate to **Start > Programs > Cypress** and click **CySmart** to launch the tool.
 - c. CySmart automatically detects the BLE dongle connected to the PC. Click **Refresh** if the BLE dongle does not appear in the **Select BLE Dongle Target** pop-up window. Click **Connect**, as shown in Figure 1.

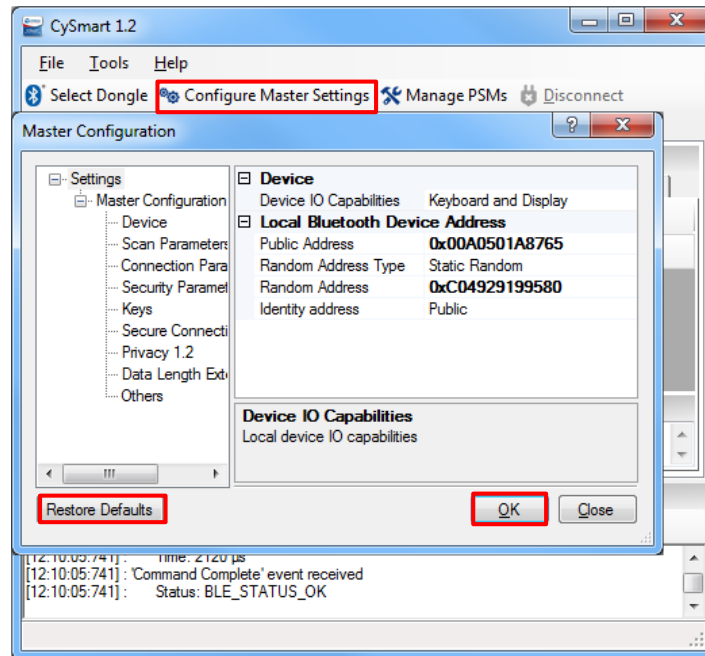
Figure 1. CySmart BLE Dongle Selection



Note: If the dongle firmware is outdated, you will be alerted with an appropriate message. You must upgrade the firmware before you can complete this step. Follow the instructions in the window to update the dongle firmware.

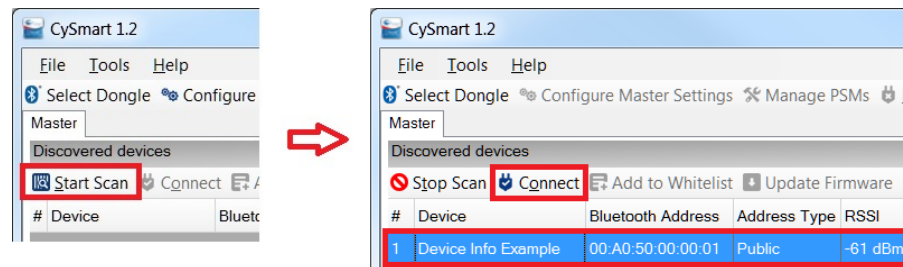
- d. Select **Configure Master Settings** and then click **Restore Defaults**, as Figure 2 shows. Then, click **OK**.

Figure 2. CySmart Master Settings Configuration



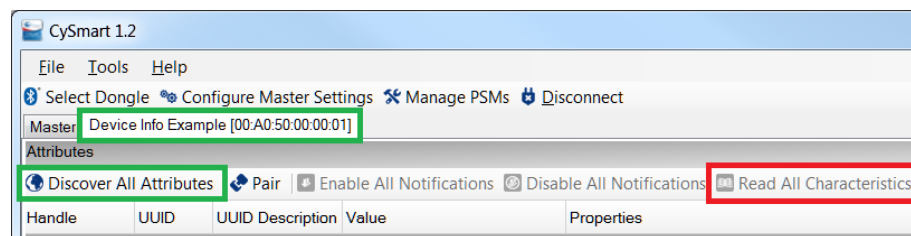
- e. Press the reset switch on the Pioneer Kit to start BLE advertisement if no device is connected or the device is in the Hibernate mode (red LED is ON). Otherwise, skip this step.
- f. On the CySmart Host Emulation Tool, click **Start Scan**. Your device name (configured as **Device Info Example**) should appear in the **Discovered devices** list, as Figure 3 shows. Select the device and click **Connect** to establish a BLE connection between the CySmart Host Emulation Tool and your device.

Figure 3. CySmart Device Discovery and Connection



- g. Once connected, switch to the **Device Info Example <device>** tab and click **Discover All Attributes** on your design from the CySmart Host Emulation Tool, as shown in Figure 4. Then, click **Read All Characteristics**.

Figure 4. CySmart Attribute Discovery and Characteristics Read



- h. Observe the Device Information Service characteristics values read with example data, as shown in Figure 5.

Figure 5. CySmart Device Information Service Characteristics Values

Select Dongle Configure Master Settings Manage PSMs Disconnect				
Master Device Info Example [00:A0:50:00:00:01]				
Attributes				
Discover All Attributes Pair Enable All Notifications Disable All Notifications View: Category				
Handle	UUID	UUID Description	Value	Property
Primary Service Declaration: Device Information				
0x000C	0x2800	Primary Service Declaration	0A:18 (Device Information)	
Characteristic Declaration: Manufacturer Name String				
0x000D	0x2803	Characteristic Declaration	02:0E:00:29:2A	
0x000E	0x2A29	Manufacturer Name String	43:79:70:72:65:73:73:20:53:65:6D:69:63:6F:6E:64:75:63:74:6F:72	0x02
Characteristic Declaration: Model Number String				
0x000F	0x2803	Characteristic Declaration	02:10:00:24:2A	
0x0010	0x2A24	Model Number String	44:49:53:20:76:31:2E:30	0x02
Characteristic Declaration: Serial Number String				
0x0011	0x2803	Characteristic Declaration	02:12:00:25:2A	
0x0012	0x2A25	Serial Number String	31:32:33:34:35:36:00:00:00:00	0x02
Characteristic Declaration: Hardware Revision String				
0x0013	0x2803	Characteristic Declaration	02:14:00:27:2A	
0x0014	0x2A27	Hardware Revision String	43:59:38:43:4B:49:54:2D:30:34:32:20:42:4C:45	0x02
Characteristic Declaration: Firmware Revision String				
0x0015	0x2803	Characteristic Declaration	02:16:00:26:2A	
0x0016	0x2A26	Firmware Revision String	00:00:00:00:00:00:00:00:00	0x02
Characteristic Declaration: Software Revision String				
0x0017	0x2803	Characteristic Declaration	02:18:00:28:2A	
0x0018	0x2A28	Software Revision String	43:79:53:6D:61:72:74:20:74:6F:6F:6C	0x02
Characteristic Declaration: System ID				
0x0019	0x2803	Characteristic Declaration	02:1A:00:23:2A	
0x001A	0x2A23	System ID	00:00:00:00:00:00:00:00	0x02
Characteristic Declaration: IEEE 11073-20601 Regulatory Certification Data List				
0x001B	0x2803	Characteristic Declaration	02:1C:00:2A:2A	
0x001C	0x2A2A	IEEE 11073-20601 Regulatory Certification Data List	00	0x02
Characteristic Declaration: PnP ID				
0x001D	0x2803	Characteristic Declaration	02:1E:00:50:2A	
0x001E	0x2A50	PnP ID	01:B4:04:01:00:01:00	0x02

5. Do the following to test the example using the CySmart mobile app as Running Speed and Cadence Service Client:
 - a. Launch the CySmart mobile app and swipe down the screen to refresh the list of BLE devices available nearby. Make sure that the development kit is advertising (green LED is blinking): you may need to press the **SW1** button to wake up the device from the Hibernate mode. Once the **Device Info Example** device appears on the BLE devices list, connect to it and choose **Device Information Service** in the service selector.
 - b. Explore information about the device.

Figure 6. CySmart Android App Recognized BLE Kit as Device Info Example

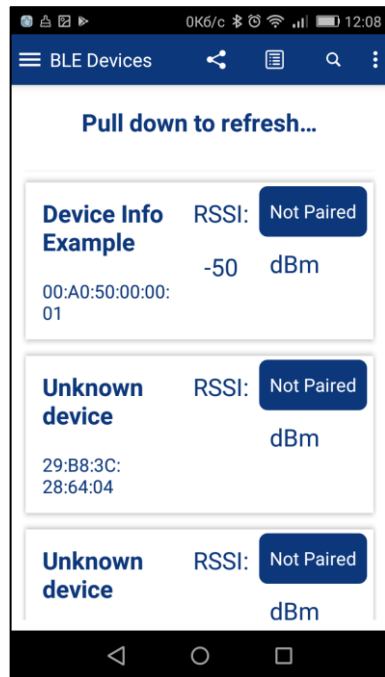


Figure 7. CySmart Android App Shows Device Information Service in Service Selector

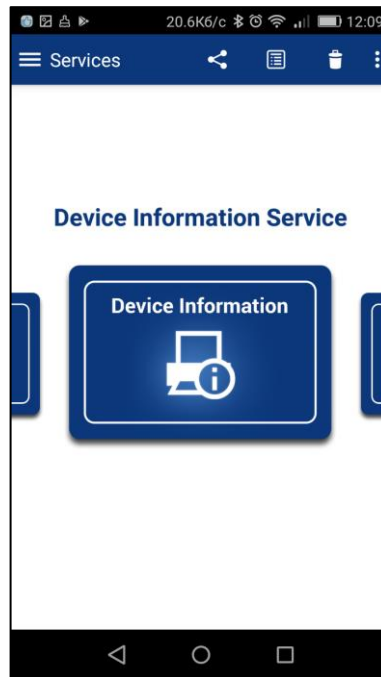
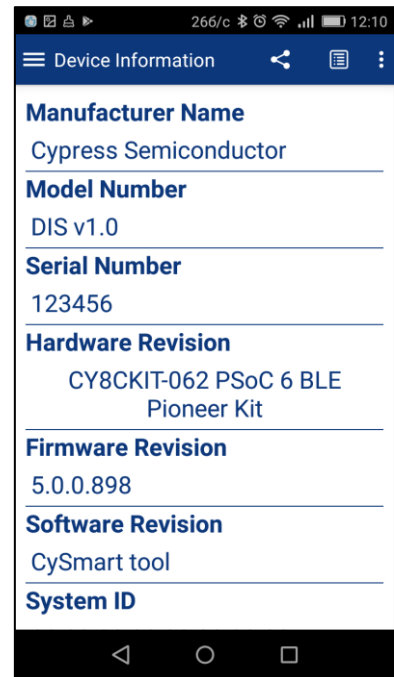


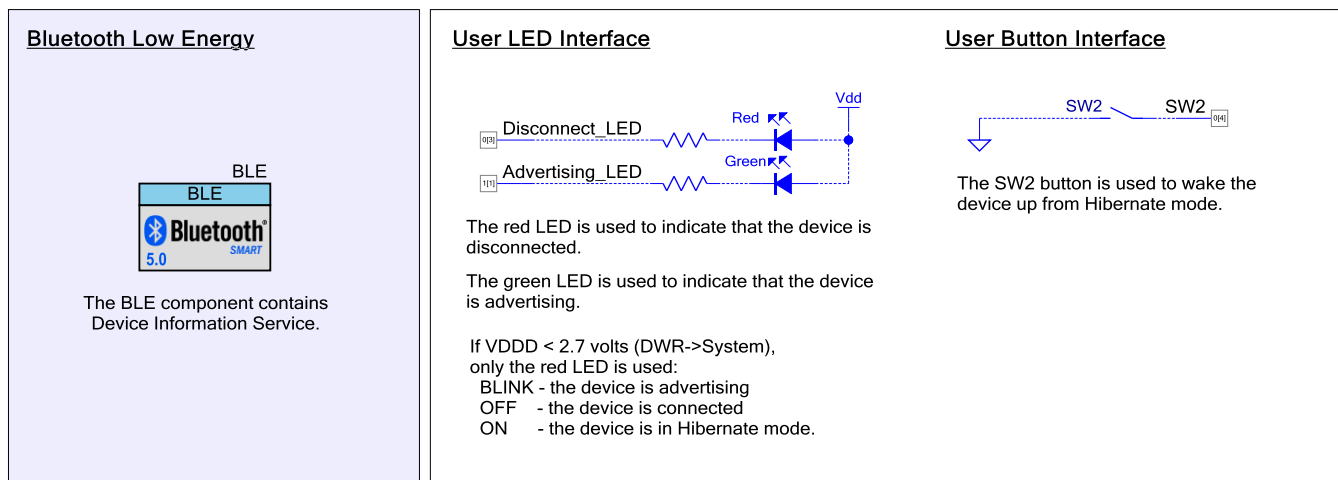
Figure 8. CySmart Android App Reads Device Information Service Characteristics



Design and Implementation

Figure 9 shows the top design schematic.

Figure 9. BLE Device Information Service Code Example Schematic



One callback function (AppCallBack()) is required to receive generic events from the BLE Stack.

The Cy_BLE_GAPP_StartAdvertisement() API is called after the CY_BLE_EVT_STACK_ON event to start advertising.

Pin assignments

The pin assignments and connections required on the development board for supported kits are in [Table 1](#).

Table 1. Pin Assignment

Pin Name	Development Kit CY8CKIT-062	Comment
Disconnect_LED	P0[3]	The red color of the RGB LED
Advertising_LED	P1[1]	The green color of the RGB LED
SW2	P0[4]	

Components and Settings

[Table 2](#) lists the PSoC Creator Components used in this example, how they are used in the design, and the non-default settings required so they function as intended.

Table 2. PSoC Creator Components

Component	Instance Name	Purpose	Non-default Settings
Bluetooth Low Energy (BLE)	BLE	The BLE component contains Device Information Service.	See the Parameter Settings section
Digital Input Pin	SW2	The SW2 button is used to wake the device up from Hibernate mode.	[General tab] Uncheck HW connection Drive mode: Resistive Pull Up
Digital Output pin	Disconnect_LED Advertising_LED	These GPIOs are configured as firmware-controlled digital output pins that control LEDs.	[General tab] Uncheck HW connection Drive mode: Strong Drive

For information on the hardware resources used by a Component, see the Component datasheet.

Parameter Settings

The BLE component is configured as the custom profile in peripheral role. Device Information Service is added with all characteristics.

Figure 10. General Settings

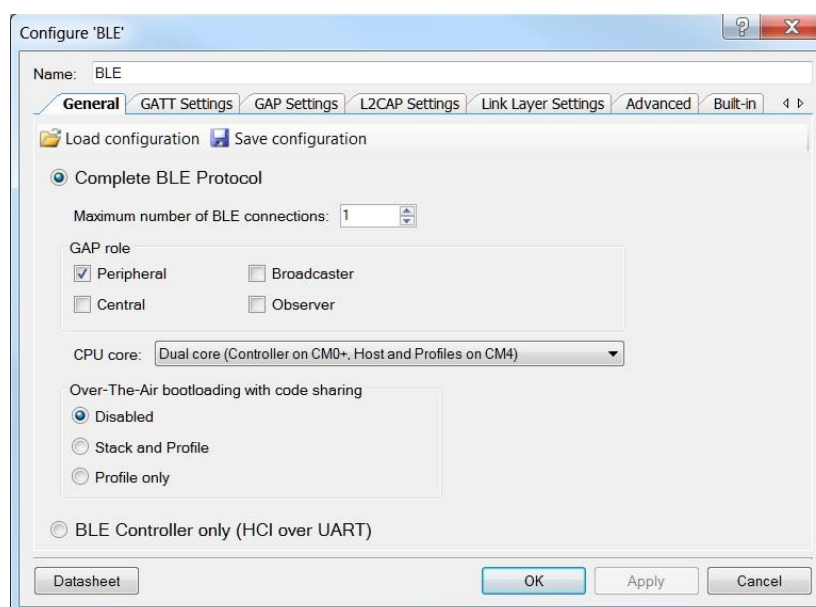
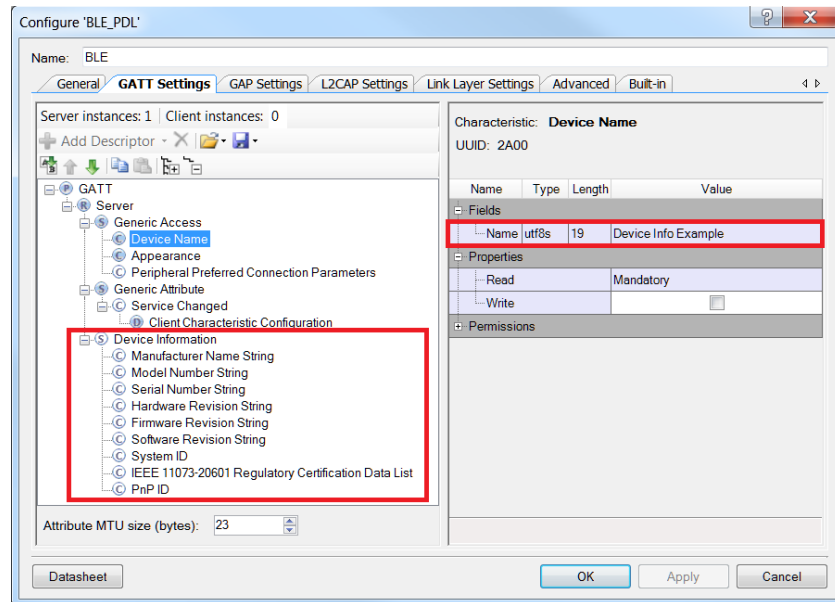


Figure 11. GATT Settings



Configure 'BLE_PDL'

Name: BLE

Server instances: 1 | Client instances: 0

General | **GATT Settings** | GAP Settings | L2CAP Settings | Link Layer Settings | Advanced | Built-in

Characteristic: **Device Name**
 UUID: 2A00

Name	Type	Length	Value
Name	utf8s	19	Device Info Example

Properties:

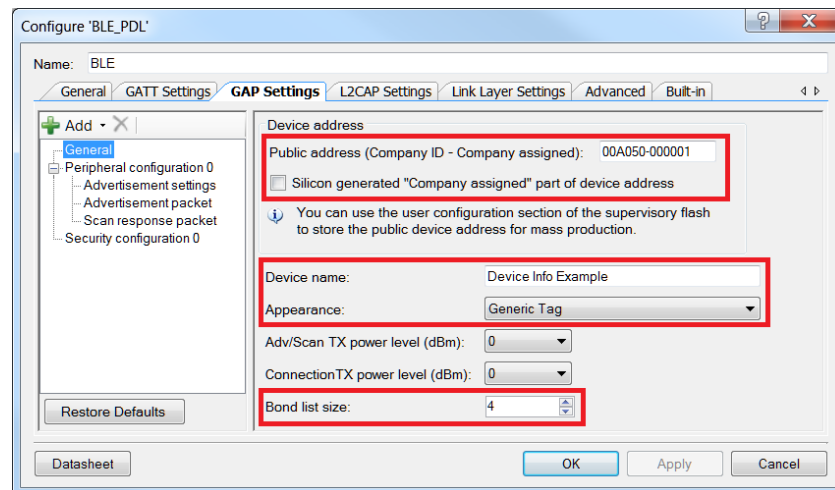
Read	Write
Mandatory	

Permissions:

Attribute MTU size (bytes): 23

Datasheet OK Apply Cancel

Figure 12. GAP Settings



Configure 'BLE_PDL'

Name: BLE

General | **GAP Settings** | GATT Settings | L2CAP Settings | Link Layer Settings | Advanced | Built-in

Device address

Public address (Company ID - Company assigned): 00A050-000001

☐ Silicon generated "Company assigned" part of device address

You can use the user configuration section of the supervisory flash to store the public device address for mass production.

Device name: Device Info Example

Appearance: Generic Tag

Adv/Scan TX power level (dBm): 0

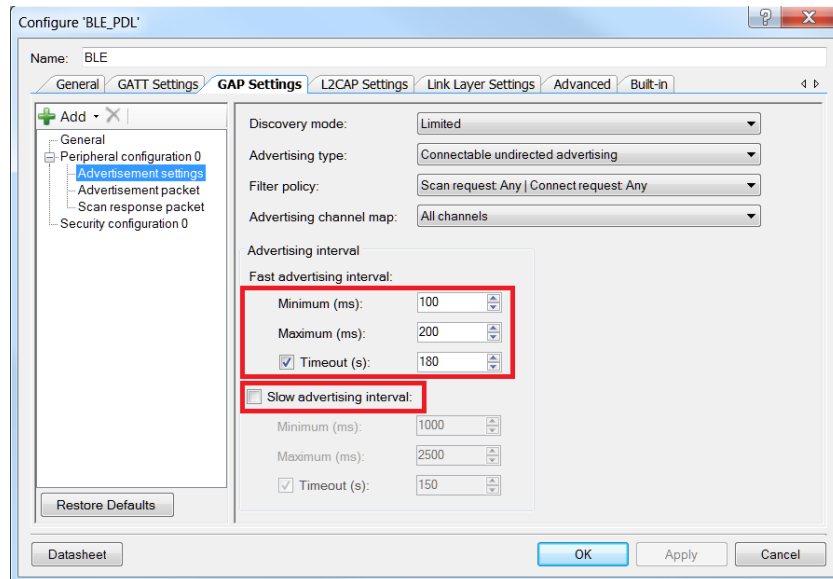
Connection TX power level (dBm): 0

Bond list size: 4

Restore Defaults

Datasheet OK Apply Cancel

Figure 13. GAP Settings: Advertisement Settings



Configure 'BLE_PDL'

Name: BLE

General | GATT Settings | **GAP Settings** | L2CAP Settings | Link Layer Settings | Advanced | Built-in

Discovery mode: Limited

Advertising type: Connectable undirected advertising

Filter policy: Scan request Any | Connect request Any

Advertising channel map: All channels

Advertising interval

Fast advertising interval:

Minimum (ms): 100

Maximum (ms): 200

☒ Timeout (s): 180

☐ Slow advertising interval:

Minimum (ms): 1000

Maximum (ms): 2500

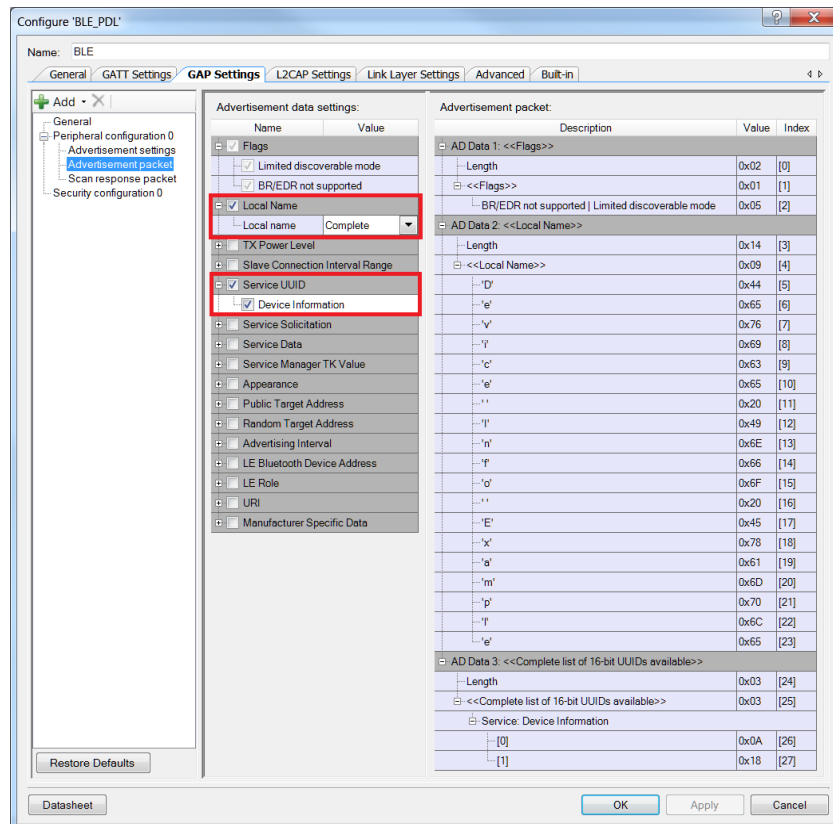
☒ Timeout (s): 150

Restore Defaults

Datasheet

OK Apply Cancel

Figure 14. GAP Settings: Advertisement Packet



Configure 'BLE_PDL'

Name: BLE

General | GATT Settings | **GAP Settings** | L2CAP Settings | Link Layer Settings | Advanced | Built-in

Advertisement data settings:

☒ Flags

☒ Limited discoverable mode

☒ BR/EDR not supported

☒ Local name

Local name: Complete

☐ TX Power Level

☐ Slave Connection Interval Range

☒ Service UUID

☒ Device Information

☐ Service Solicitation

☐ Service Data

☐ Service Manager TK Value

☐ Appearance

☐ Public Target Address

☐ Random Target Address

☐ Advertising Interval

☐ LE Bluetooth Device Address

☐ LE Role

☐ URI

☐ Manufacturer Specific Data

Advertisement packet:

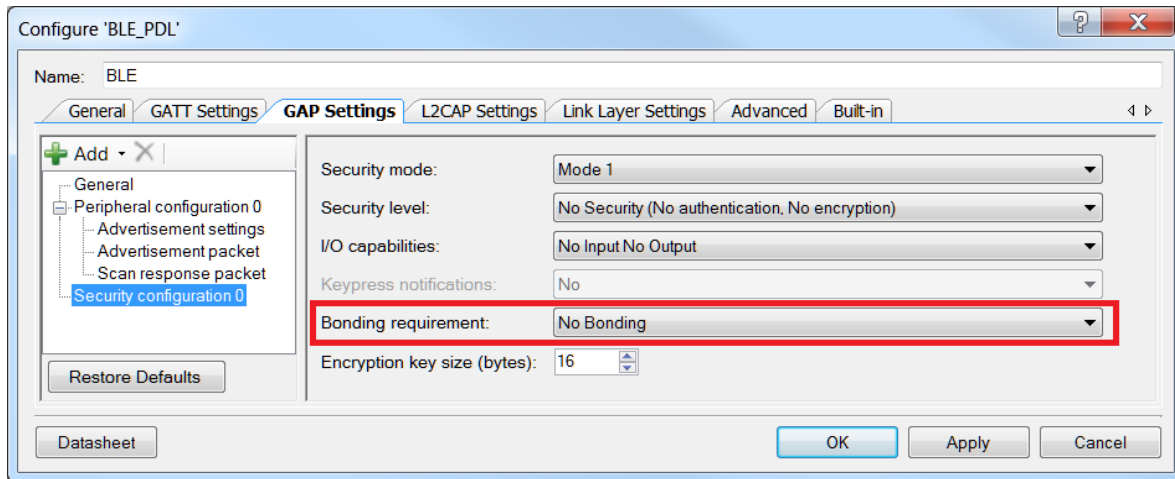
Description	Value	Index
AD Data 1: <<Flags>>		
Length	0x02	[0]
<<Flags>>	0x01	[1]
BR/EDR not supported Limited discoverable mode	0x05	[2]
AD Data 2: <<Local Name>>		
Length	0x14	[3]
<<Local Name>>	0x09	[4]
'D'	0x44	[5]
'e'	0x65	[6]
'v'	0x76	[7]
'i'	0x69	[8]
'c'	0x63	[9]
'e'	0x65	[10]
'.'	0x20	[11]
'i'	0x49	[12]
'n'	0x6E	[13]
'f'	0x66	[14]
'o'	0x6F	[15]
'.'	0x20	[16]
'E'	0x45	[17]
'x'	0x78	[18]
'a'	0x61	[19]
'm'	0x6D	[20]
'p'	0x70	[21]
'f'	0x6C	[22]
'e'	0x65	[23]
AD Data 3: <<Complete list of 16-bit UUIDs available>>		
Length	0x03	[24]
<<Complete list of 16-bit UUIDs available>>	0x03	[25]
Service: Device Information		
[0]	0x0A	[26]
[1]	0x18	[27]

Restore Defaults

Datasheet

OK Apply Cancel

Figure 15. Security Settings



Switching the CPU Cores Usage

This section describes how to switch between different CPU cores usage (Single core and Dual core) in the BLE Peripheral Driver Library (PDL) examples.

The BLE Component has the CPU Core parameter that defines the cores usage. It can take the following values:

- **Single core (Complete Component on CM0+)** – only CM0+ will be used.
- **Single core (Complete Component on CM4)** – only CM4 will be used.
- **Dual core (Controller on CM0+, Host and Profiles on CM4)** – CM0+ and CM4 will be used: CM0+ for the Controller and CM4 for the Host and Profiles.

The BLE example structure allows easy switching between different CPU cores options.

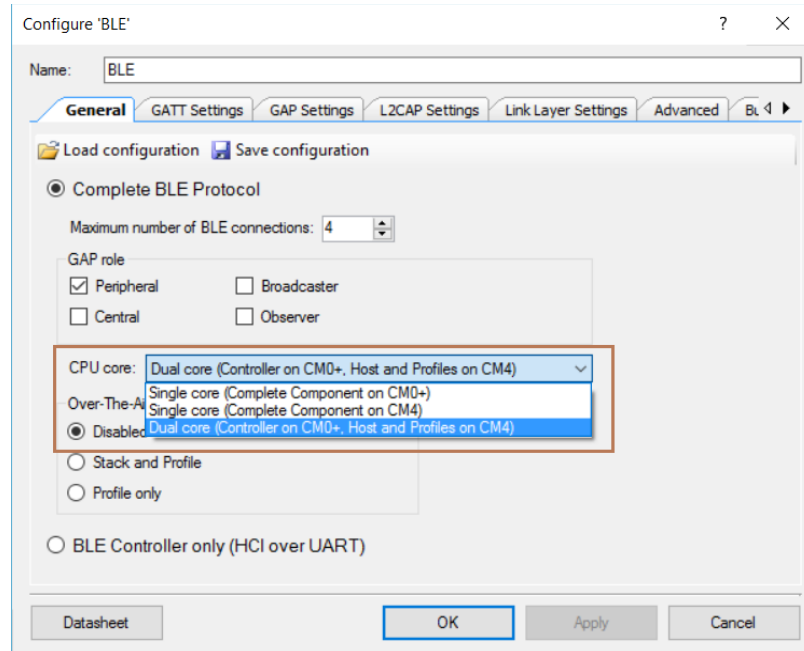
Important to remember:

- All application host-files must be run on the host core.
- The BLE Subsystem (BLESS) interrupt must be assigned to the core where the controller runs.

Do the following to switch the CPU cores usage:

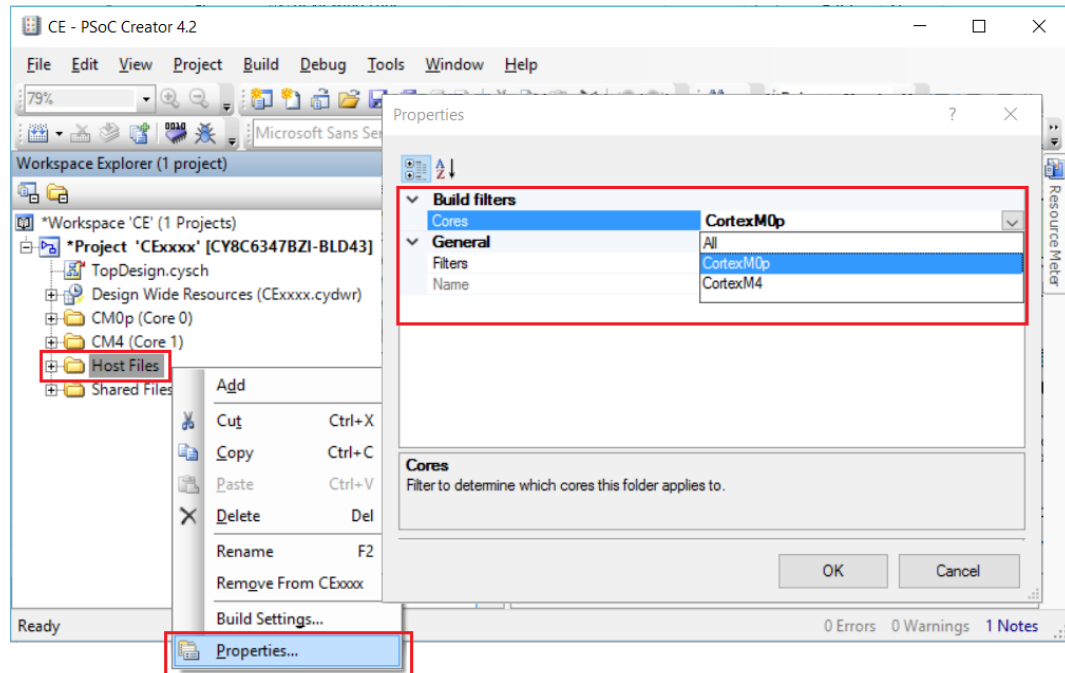
1. In the BLE Component Customizer **General** tab, select the appropriate CPU core option.

Figure 16. Select CPU Core



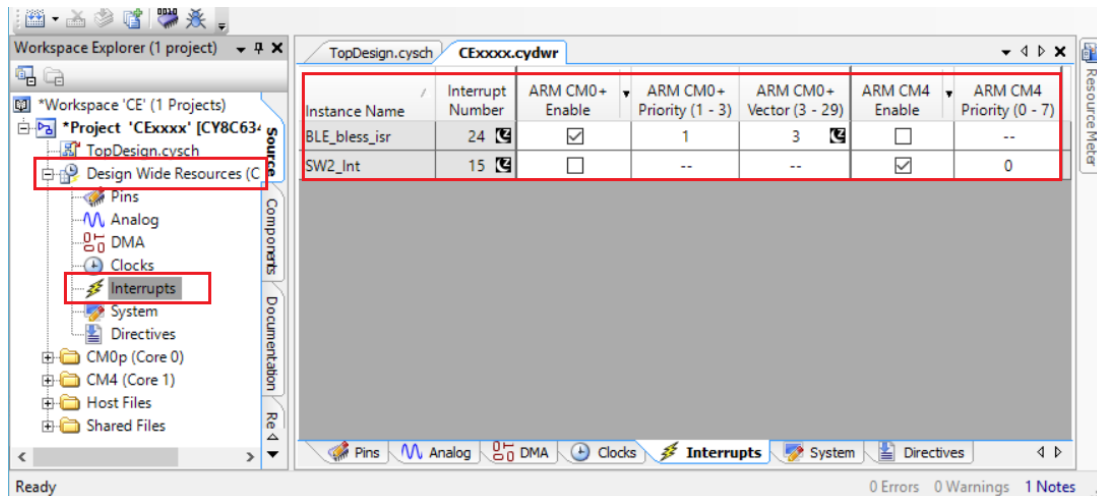
2. Identify the core on which host files will run. In the workspace explorer panel, right-click **Host Files**, choose **Properties**. Set the **Cores** property corresponding to the CPU core chosen in step 1, as shown in [Figure 17](#).
 - For **Single core (Complete Component on CM0+)** option – CM0+
 - For **Single core (Complete Component on CM4)** option – CM4
 - For **Dual core (Controller on CM0+, Host and Profiles on CM4)** option – CM4

Figure 17. Change Core Properties



3. Assign the BLE_bless_isr and other peripheral (button – SW2, timer(s), and so on) interrupts to the appropriate core in **DWR > Interrupts** tab:
 - For **Single core (Complete Component on CM0+)** option: BLE_bless_isr and peripheral interrupts on **CM0+**
 - For **Single core (Complete Component on CM4)** option: BLE_bless_isr and peripheral interrupts on **CM4**
 - For **Dual core (Controller on CM0+, Host and Profiles on CM4)** option: BLE_bless_isr interrupt on **CM0+**, other peripheral interrupts on **CM4**

Figure 18. Assign Interrupts



Reusing This Example

This example is designed for the CY8CKIT-062-BLE pioneer kit. To port the design to a different PSoC 6 MCU device, kit, or both, change the target device using the Device Selector and update the pin assignments in the Design Wide Resources Pins settings as needed.

Related Documents

Application Notes		
AN210781	Getting Started with PSoC 6 MCU with Bluetooth Low Energy (BLE) Connectivity	Describes PSoC 6 BLE, and how to build a basic code example.
AN215656	PSoC 6 MCU Dual-CPU System Design	Presents the theory and design considerations related to this code example.
Software and Drivers		
CySmart – Bluetooth® LE Test and Debug Tool		CySmart is a Bluetooth® LE host emulation tool for Windows PCs. The tool provides an easy-to-use Graphical User Interface (GUI) to enable the user to test and debug their Bluetooth LE peripheral applications.
PSoC Creator Component Datasheets		
Bluetooth Low Energy (BLE_PDL) Component		The Bluetooth Low Energy (BLE_PDL) Component provides a comprehensive GUI-based configuration window to facilitate designing applications requiring BLE connectivity.
Device Documentation		
PSoC® 6 MCU: PSoC 63 with BLE. Datasheet.		PSoC® 6 MCU: PSoC 63 with BLE Architecture Technical Reference Manual
Development Kit (DVK) Documentation		
CY8CKIT-062-BLE PSoC 6 BLE Pioneer Kit		

Document History

Document Title: CE215120 - BLE Device Information Service with PSoC 6 MCU with BLE Connectivity

Document Number: 002-15120

Revision	ECN	Orig. of Change	Submission Date	Description of Change
**	6086706	NPAL	06/12/2018	New spec

Worldwide Sales and Design Support

Cypress maintains a worldwide network of offices, solution centers, manufacturer's representatives, and distributors. To find the office closest to you, visit us at [Cypress Locations](#).

Products

Arm® Cortex® Microcontrollers	cypress.com/arm
Automotive	cypress.com/automotive
Clocks & Buffers	cypress.com/clocks
Interface	cypress.com/interface
Internet of Things	cypress.com/iot
Memory	cypress.com/memory
Microcontrollers	cypress.com/mcu
PSoC	cypress.com/psoc
Power Management ICs	cypress.com/pmic
Touch Sensing	cypress.com/touch
USB Controllers	cypress.com/usb
Wireless Connectivity	cypress.com/wireless

PSoC® Solutions

[PSoC 1](#) | [PSoC 3](#) | [PSoC 4](#) | [PSoC 5LP](#) | [PSoC 6 MCU](#)

Cypress Developer Community

[Community](#) | [Projects](#) | [Videos](#) | [Blogs](#) | [Training](#)
[Components](#)

Technical Support

cypress.com/support

All other trademarks or registered trademarks referenced herein are the property of their respective owners.



Cypress Semiconductor
198 Champion Court
San Jose, CA 95134-1709

© Cypress Semiconductor Corporation, 2018. This document is the property of Cypress Semiconductor Corporation and its subsidiaries, including Spansion LLC ("Cypress"). This document, including any software or firmware included or referenced in this document ("Software"), is owned by Cypress under the intellectual property laws and treaties of the United States and other countries worldwide. Cypress reserves all rights under such laws and treaties and does not, except as specifically stated in this paragraph, grant any license under its patents, copyrights, trademarks, or other intellectual property rights. If the Software is not accompanied by a license agreement and you do not otherwise have a written agreement with Cypress governing the use of the Software, then Cypress hereby grants you a personal, non-exclusive, nontransferable license (without the right to sublicense) (1) under its copyright rights in the Software (a) for Software provided in source code form, to modify and reproduce the Software solely for use with Cypress hardware products, only internally within your organization, and (b) to distribute the Software in binary code form externally to end users (either directly or indirectly through resellers and distributors), solely for use on Cypress hardware product units, and (2) under those claims of Cypress's patents that are infringed by the Software (as provided by Cypress, unmodified) to make, use, distribute, and import the Software solely for use with Cypress hardware products. Any other use, reproduction, modification, translation, or compilation of the Software is prohibited.

TO THE EXTENT PERMITTED BY APPLICABLE LAW, CYPRESS MAKES NO WARRANTY OF ANY KIND, EXPRESS OR IMPLIED, WITH REGARD TO THIS DOCUMENT OR ANY SOFTWARE OR ACCOMPANYING HARDWARE, INCLUDING, BUT NOT LIMITED TO, THE IMPLIED WARRANTIES OF MERCHANTABILITY AND FITNESS FOR A PARTICULAR PURPOSE. No computing device can be absolutely secure. Therefore, despite security measures implemented in Cypress hardware or software products, Cypress does not assume any liability arising out of any security breach, such as unauthorized access to or use of a Cypress product. In addition, the products described in these materials may contain design defects or errors known as errata which may cause the product to deviate from published specifications. To the extent permitted by applicable law, Cypress reserves the right to make changes to this document without further notice. Cypress does not assume any liability arising out of the application or use of any product or circuit described in this document. Any information provided in this document, including any sample design information or programming code, is provided only for reference purposes. It is the responsibility of the user of this document to properly design, program, and test the functionality and safety of any application made of this information and any resulting product. Cypress products are not designed, intended, or authorized for use as critical components in systems designed or intended for the operation of weapons, weapons systems, nuclear installations, life-support devices or systems, other medical devices or systems (including resuscitation equipment and surgical implants), pollution control or hazardous substances management, or other uses where the failure of the device or system could cause personal injury, death, or property damage ("Unintended Uses"). A critical component is any component of a device or system whose failure to perform can be reasonably expected to cause the failure of the device or system, or to affect its safety or effectiveness. Cypress is not liable, in whole or in part, and you shall and hereby do release Cypress from any claim, damage, or other liability arising from or related to all Unintended Uses of Cypress products. You shall indemnify and hold Cypress harmless from and against all claims, costs, damages, and other liabilities, including claims for personal injury or death, arising from or related to any Unintended Uses of Cypress products.

Cypress, the Cypress logo, Spansion, the Spansion logo, and combinations thereof, WICED, PSoC, CapSense, EZ-USB, F-RAM, and Traveo are trademarks or registered trademarks of Cypress in the United States and other countries. For a more complete list of Cypress trademarks, visit cypress.com. Other names and brands may be claimed as property of their respective owners.