

DSO-8 / TSON-8 CAN Demoboard Documentation

May, 17th 2016



DSO-8 / TSON-8 CAN Demoboard Overview

DSO-8 / TSON-8 CAN Demoboard Features

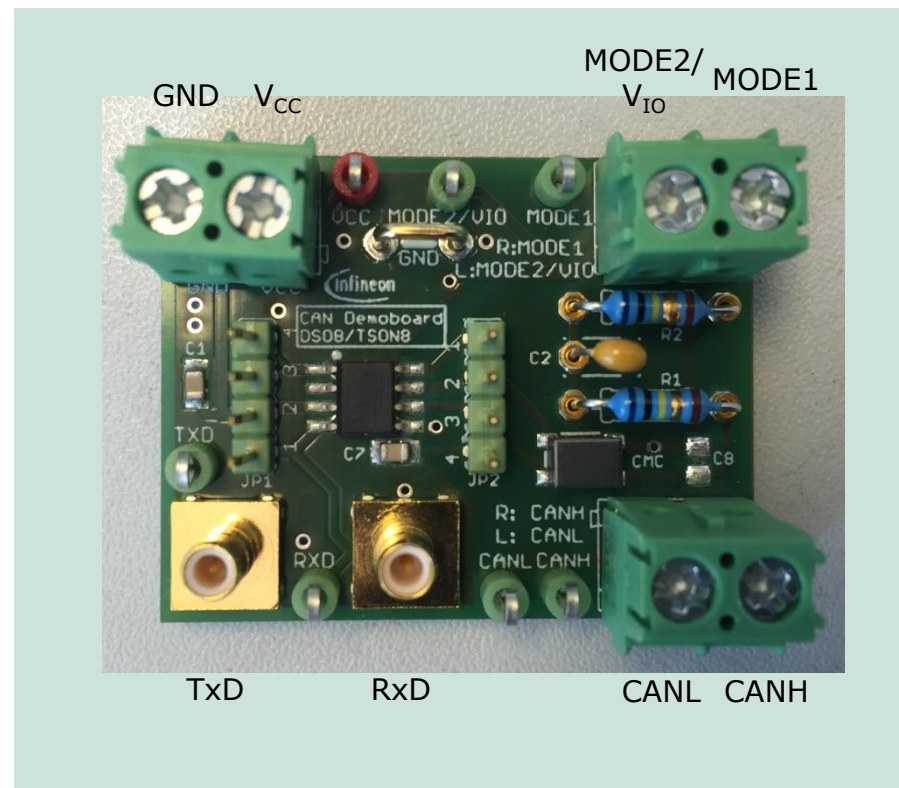
Connector:

- ✓ V_{CC} , GND, MODE1, MODE2 / V_{IO} , CANH, CANL, TxD, RxD

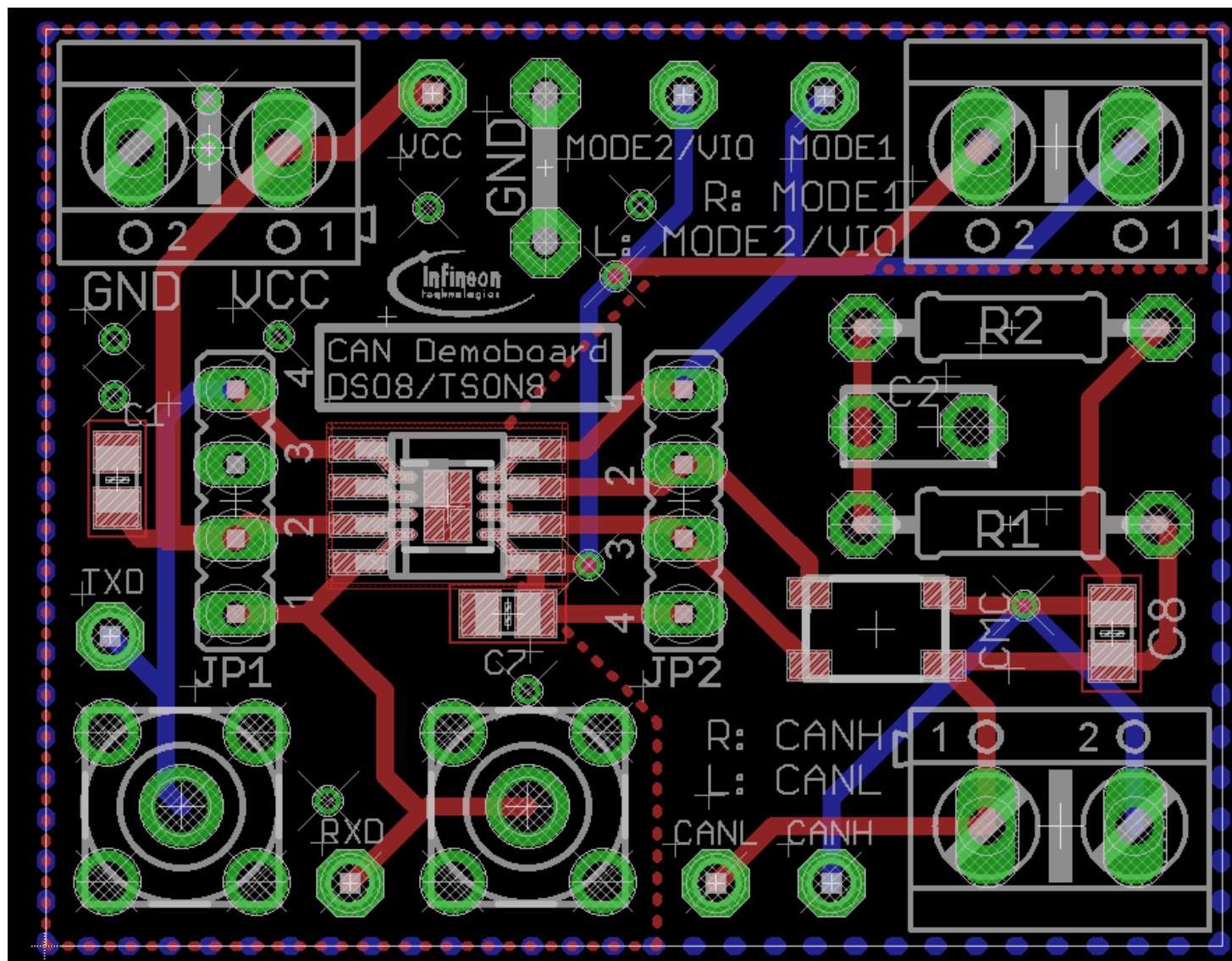
Test points:

- ✓ V_{CC} , MODE1, MODE2 / V_{IO} , CANH, CANL, TxD, RxD
- ✓ Placement of DSO-8 and TSON8 package possible
- ✓ Demoboard for evaluation of 8-pin CAN transceiver recommended
- ✓ All necessary external components already on demoboard placed

Picture of DSO-8 / TSON-8 CAN Demoboard



DSO-8 / TSON-8 CAN Demoboard Layout



DSO-8 / TSON-8 CAN Demoboard

Bill of Material



Part	Value	Device	Package
C1	100nF	Capacitor	C0805
C2	4.7nF	Capacitor	Trough Hole Capacitor (0.05 inch diameter)
C7	100nF	Capacitor	C0805
C8	n.b.	Optional Capacitor	C0805
JP1	-	Header Row	4-pin Header
JP2	-	Header Row	4-pin Header
JP5	-	GND Connection for Oscilloscope	
R1	60	Resistor	Trough Hole Resistor (0.05 inch diameter)
R2	60	Resistor	Trough Hole Resistor (0.05 inch diameter)
TP1 - 7	-	Test Points	P1-13 (0.05 inch diameter)
U\$1	100μH	Common Mode Choke	5.9mm x 3.4mm
U\$3	Infineon CAN Transceiver	CAN Transceiver	PG-DSO-8 / PG-TSON-8
X1 -X3	-	Connector	W237-132 (0.2 inch pitch)

Further links and documents

Please visit our webpage for an overview of Infineon's Automotive Transceiver portfolio:

- › [Infineon Automotive Transceiver Webpage](#)

8-pin CAN FD Transceiver:

- › [TLE7251V CAN FD Transceiver Datasheet](#)
- › [TLE7250X CAN FD Transceiver Datasheet](#)
- › [TLE7250V CAN FD Transceiver Datasheet](#)
- › [TLE7250 CAN FD Transceiver Datasheet](#)



Part of your life. Part of tomorrow.

