

# SMU\_Reset\_Alarm\_1 for KIT\_AURIX\_TC397\_TFT

Reset triggered by an SMU alarm

AURIX™ TC3xx Microcontroller Training  
V1.0.0



[Please read the Important Notice and Warnings at the end of this document](#)

## Scope of work

---

**The SMU triggers an alarm, which resets the device as preconfigured reaction.**

The Safety Management Unit (SMU) is configured to trigger a reset if an internal software alarm occurs.

# Introduction

---

- › The Safety Memory Unit (SMU) is a central and modular component of the safety architecture providing a generic interface to manage the behavior of the microcontroller under the presence of faults.
- › The SMU centralizes all the alarm signals related to the different hardware- and software-based safety mechanisms.
- › Each alarm can be individually configured to trigger internal or external actions.
- › The SMU in combination with the embedded safety mechanisms, is able to detect and report more than 99% of the critical failure modes.
- › In this example, Software Alarm 0 is used to trigger a reset.



# Implementation

---

## Configure the SMU module

- › To trigger a reset with an SMU alarm, a few steps are required:
  - To modify the SMU registers, the SMU module has to be unlocked with the function ***IfxSmu\_unlockConfigRegisters()***. After modification, the SMU registers have to be locked again using the function ***IfxSmu\_lockConfigRegisters()***.
  - To modify SMU configuration registers, it is required to clear and set the Safety ENDINIT protection. This is done with the functions ***IfxScuWdt\_clearSafetyEndinit()*** and ***IfxScuWdt\_setSafetyEndinit()***.
  - To enable the SMU reset, the SMU field of the Reset Configuration Register (**RSTCON**) has to be set to 0x1 for a system reset or 0x2 for an application reset (***SCU\_RSTCON.B.SMU = 0x1***).

# Implementation

---

## Configure the SMU module (cont.)

- The function ***IfxSmu\_setAlarmAction()*** configures the alarm's behavior by writing a 3-bit code to the three Alarm Configuration Registers associated to the specific alarm and its group. In this example, the software alarm 0 (***IfxSmu\_Alarm\_Software\_Alarm0***) and the SCU reset (***IfxSmu\_InternalAlarmAction\_reset***) are selected. The iLLD function itself selects the group based on the above mentioned parameters.
- Start the SMU state machine (SSM) with the function ***IfxSmu\_activateRunState()***.

The functions above are provided by the iLLD headers ***IfxSmu.h*** and ***IfxSrc.h***.

# Implementation

---

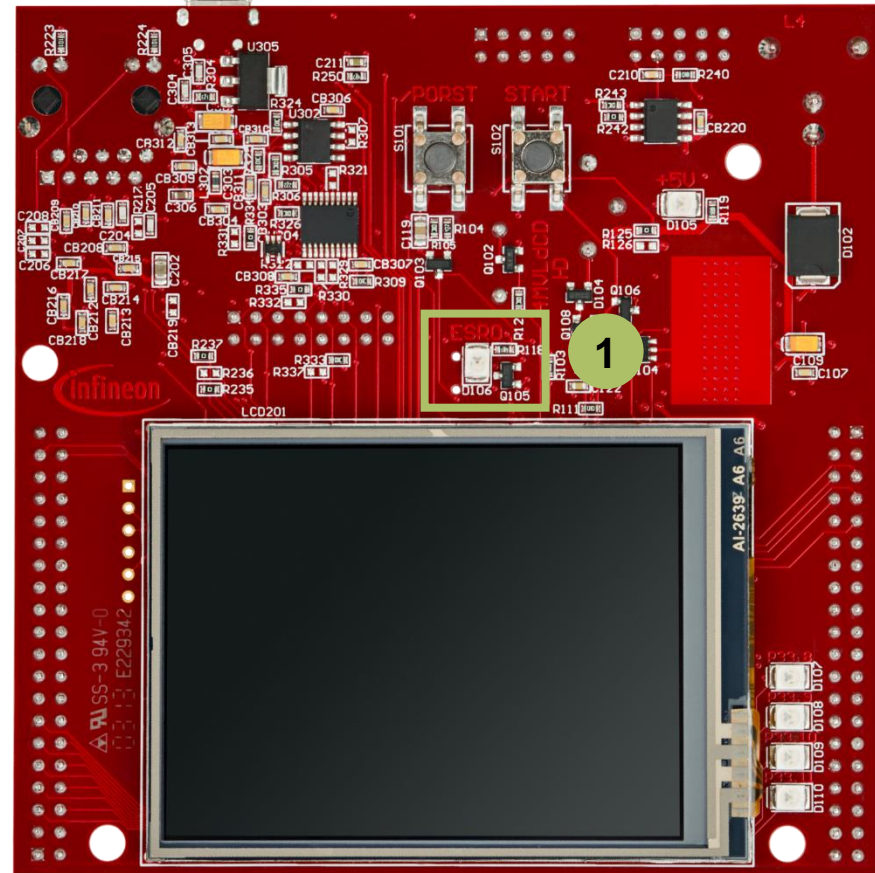
## Triggering of the alarm

- › The Software Alarm 0 can be triggered with the function ***lfxSmu\_setAlarmStatus()*** provided by the iLLD header ***lfxSmu.h***.

# Run and Test

After code compilation and flashing the device, check if LED D106 (1) is turned on.

**Note:** If the debugger is disconnected, the LED D106 will blink very fast (continuous reset). In the case the debugger is connected, the LED D106 will blink once, due to the fact that after the reset the connection to the board was re-established.





# References



- > AURIX™ Development Studio is available online:
- > <https://www.infineon.com/aurixdevelopmentstudio>
- > Use the „*Import...*“ function to get access to more code examples.



- > More code examples can be found on the GIT repository:
- > [https://github.com/Infineon/AURIX\\_code\\_examples](https://github.com/Infineon/AURIX_code_examples)



- > For additional trainings, visit our webpage:
- > <https://www.infineon.com/aurix-expert-training>



- > For questions and support, use the AURIX™ Forum:
- > <https://www.infineonforums.com/forums/13-Aurix-Forum>

## Trademarks

All referenced product or service names and trademarks are the property of their respective owners.

**Edition 2020-06**

**Published by**

**Infineon Technologies AG**

**81726 Munich, Germany**

**© 2020 Infineon Technologies AG.**

**All Rights Reserved.**

**Do you have a question about this document?**

**Email: [erratum@infineon.com](mailto:erratum@infineon.com)**

**Document reference**

**SMU\_Reset\_Alarm\_1\_KIT\_TC397\_TFT**

## IMPORTANT NOTICE

The information given in this document shall in no event be regarded as a guarantee of conditions or characteristics (“Beschaffenheitsgarantie”).

With respect to any examples, hints or any typical values stated herein and/or any information regarding the application of the product, Infineon Technologies hereby disclaims any and all warranties and liabilities of any kind, including without limitation warranties of non-infringement of intellectual property rights of any third party.

In addition, any information given in this document is subject to customer’s compliance with its obligations stated in this document and any applicable legal requirements, norms and standards concerning customer’s products and any use of the product of Infineon Technologies in customer’s applications.

The data contained in this document is exclusively intended for technically trained staff. It is the responsibility of customer’s technical departments to evaluate the suitability of the product for the intended application and the completeness of the product information given in this document with respect to such application.

For further information on the product, technology, delivery terms and conditions and prices please contact your nearest Infineon Technologies office ([www.infineon.com](http://www.infineon.com)).

## WARNINGS

Due to technical requirements products may contain dangerous substances. For information on the types in question please contact your nearest Infineon Technologies office.

Except as otherwise explicitly approved by Infineon Technologies in a written document signed by authorized representatives of Infineon Technologies, Infineon Technologies’ products may not be used in any applications where a failure of the product or any consequences of the use thereof can reasonably be expected to result in personal injury.