

**Please note that Cypress is an Infineon Technologies Company.**

The document following this cover page is marked as “Cypress” document as this is the company that originally developed the product. Please note that Infineon will continue to offer the product to new and existing customers as part of the Infineon product portfolio.

**Continuity of document content**

The fact that Infineon offers the following product as part of the Infineon product portfolio does not lead to any changes to this document. Future revisions will occur when appropriate, and any changes will be set out on the document history page.

**Continuity of ordering part numbers**

Infineon continues to support existing part numbers. Please continue to use the ordering part numbers listed in the datasheet for ordering.



**THIS SPEC IS OBSOLETE**

Spec No: 002-04371

Spec Title: AN7204371-FM3 MB9B100A/300A/400A/500A Series  
Microcontroller Inverter Reference Board

Replaced by: NONE

## AN7204371

### FM3 MB9B100A/300A/400A/500A Series Microcontroller Inverter Reference Board

This book provides the detail hardware information of the Inverter reference Board with Cypress's FM3 family.

## Contents

1	Preface .....	1	5.2	Setup the USB-to-UART connection.....	15
1.1	About this manual .....	1	6	Hardware .....	16
2	Related document .....	1	6.1	Power Supply Board .....	16
3	Introduction.....	2	6.2	In-Rush Limiter .....	17
3.1	Overview.....	2	6.3	Active PFC Stage .....	17
3.2	Features.....	3	6.4	3- Phase Invert Stage .....	18
4	Getting Start .....	4	6.5	MFT1 and MFT2 Ports.....	20
4.1	System Components .....	4	6.6	Isolated Ports.....	21
4.2	Connectors of System .....	5	6.7	Serial Programming Port .....	21
4.3	Debug the System .....	11	7	Appendix .....	22
4.4	FLASH programming using UART.....	13	7.1	Schematic.....	22
5	Motor Control GUI .....	14	8	Document History.....	28
5.1	Software Overview.....	14			

## 1 Preface

### 1.1 About this manual

This book provides the detail hardware information of the Inverter reference Board with Cypress's FM3 family.

It describes the features of the reference board and how to get start with it. The hardware circuits of this reference board also are provided.

The document is organized as follows:

Chapter 1. “**Introduction**” – This chapter introduces the Inverter Reference Board with Cypress's FM3 family and provides a brief overview of its features.

Chapter 2. “**Getting Start**” – This chapter provides information on getting started with the Inverter Reference Board.

Chapter 3. “**Motor Control GUI**” – This chapter introduces the motor control GUI briefly.

Chapter 4. “**Hardware**” – This chapter describes the hardware on the Inverter Reference Board.

**Appendix.** – This appendix provides schematics, as well as pin arrangement for the Inverter Reference Board.

## 2 Related document

MB9BFxxx Series PERIPHERAL MANUAL

Other Users Manual of Inverter Solution

### 3 Introduction

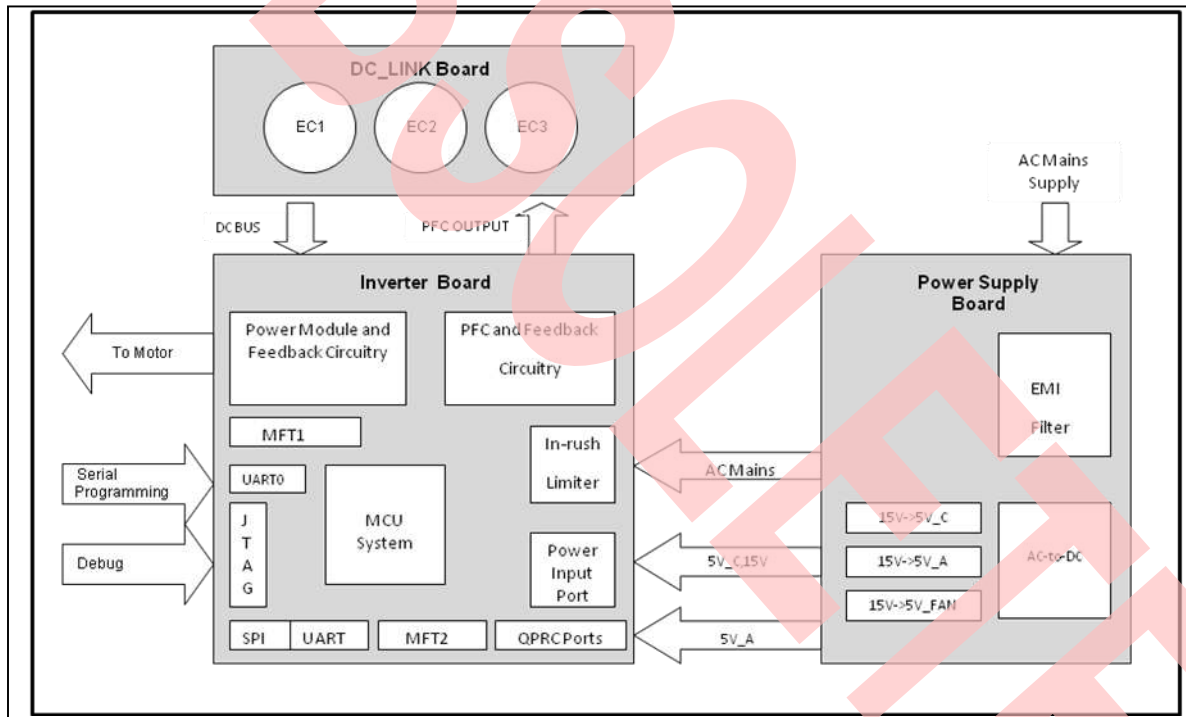
#### 3.1 Overview

The Inverter Reference Board with Cypress's FM3 family is intended to aid the user in the rapid evaluation and development of motor control applications using MB9B500 Series MCU which are embedded with ARM Cortex-M3 CPU core. This reference board is targeted to control Permanent Magnet Synchronous Motors in sensor-less operation.

The reference board has a three-phase power module device that contains the motor inverter and the gate driver's circuit. It also has Power Factor Correction (PFC) circuitry and in order to provide a full set of tools used in motor control applications. If the user doesn't need PFC stage, a rectifier module is also provided for selection. Figure1-1 is a system block diagram of Inverter Reference Board.

The rated continuous output current from the inverter is 10A (RMS). This allow up to 2.2KW output when running from a 220V single-phase input voltage in a maximum 25°C ambient temperature environment.

Figure 1. System Block Diagram



## 3.2 Features

This reference board is consisted with three parts named as power board, DC-Link board and inverter board. The key features of the reference board are listed as below:

### Power board:

- 90V~265VAC input compatible.
- Four channels of power supply rails: 15V for IPM and PFC module, 5V for MCU system, 5V for isolation chip, 5V for cooling fans.
- 90V~265VAC output went through line filter.

### PFC stage of Inverter board:

- Maximum input voltage 90 V~265 VAC.
- Adapt PFC module includes rectifier bridge, fast recovering diode, IGBT.
- VAC input voltage sensing.
- DC bus sensing.
- DC Over-voltage protection.
- Current Feedback circuitry.
- Over-current protection.
- Zero-crossing detection.

### Inverter stage of Inverter board:

- Three-phase inverter bridge with a power rating of 400V/10A
- Phase current sense resistor for dual shunt vector control
- Over-current protection

### Input / Output of Inverter board:

- 15V and 5V power supply input (J5).
- MFT1 port for motor control and PFC signals input or output (J2).
- MFT2 port for 2<sup>nd</sup> channel of motor control signal output (J6).
- Two channels of quadrature encoder interface (J7, J8).

### Isolated Communication Ports:

- SPI communication port (J10).
- UART communication port (J9).

### Programming and debug interface:

JTAG via 20- pin port (J3).

### Serial programming port:

Serial programming port (J1).

### Additional Protection Circuitry:

- 250 VAC/15A fuse
- In-rush current limiter

- EMI filter

## 4 Getting Start

Getting start with the hardware, firmware and software

### 4.1 System Components

This reference system is made up with three daughter board. They are:

#### Power Board

This board contains the EMI filter stage and an AC-to-DC module. The AC-to-DC module can output a stabled 15V (15W) power line. It will be transformed to two 5V power lines through line regulators, one is for MCU system and another is for cooling fans. At the same time, isolated 5V power line comes from the 15V line by isolated DC-to-DC, and another isolated 5V is for isolation communication device.

#### Inverter Board

There are PFC stage and Inverter stage, as well as a full bridge rectifier module provided for selection when the user doesn't need PFC stage.

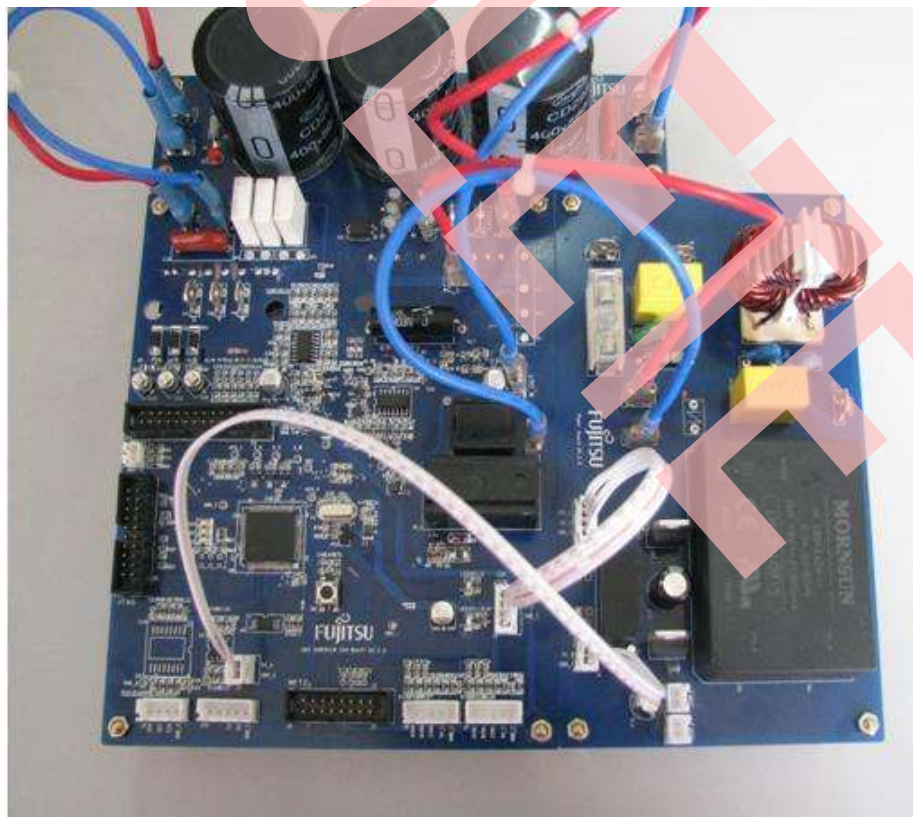
#### DC-Link Board

DC-Link Board can make smoothly 100Hz half-sine-wave power and it can provide to DC bus through three electrolytic capacitors.

The input and output cables should be with the minimum current rating of 10A.

Figure2-1 shows the connection of the boards.

Figure 2. Connection of the Boards



## 4.2 Connectors of System

### 4.2.1 Connectors on Power Board

The connectors on power board are shown in Figure2-2.

Figure 3. Connectors on Power Board

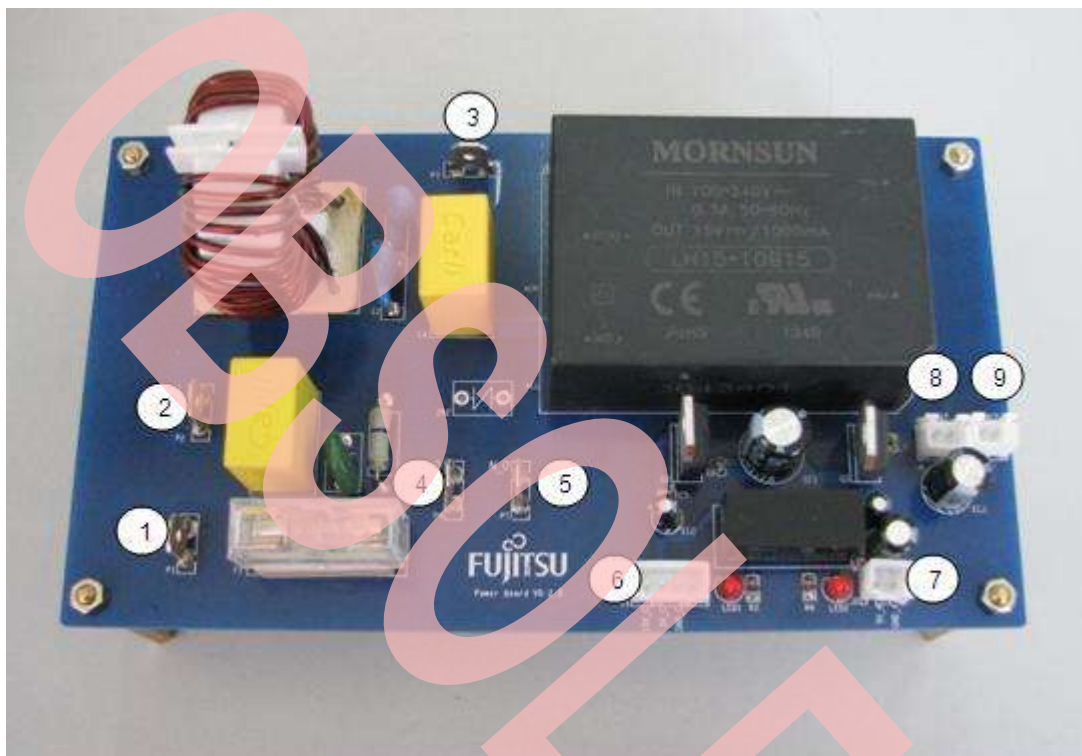


Table 2-1 collects the definition of the connectors on power board.

Table 1. Definition of Connectors on Power Board

Number	Port Designator	Description
1	P1	N input of AC mains
2	P2	L input of AC mains
3	P3	Earth Ground
4	P4	L output of filtered AC mains
5	P5	N output of filtered AC mains
6	J1	15V_C, 5V_C output
7	J2	5V_A output
8,9	J3,J4	Power supply for cooling fans



#### 4.2.2 Connectors on DC-Link Board

The connectors on DC-Link are shown in Figure2-3.

Figure 4. Connectors on DC-Link Board



Table 2-2 collects the definition of the connectors on DC-Link board.

Table 2. Definition of Connectors on DC-Link Board

Number	Port Designator	Description
1	P1	PFC positive input
2	P2	GND
3	P3	DC bus positive output
4	P4	GND



#### 4.2.3 Connectors on Inverter Board

The connectors on Inverter board are shown in Figure2-4.

Figure 5. Connectors on Inverter Board

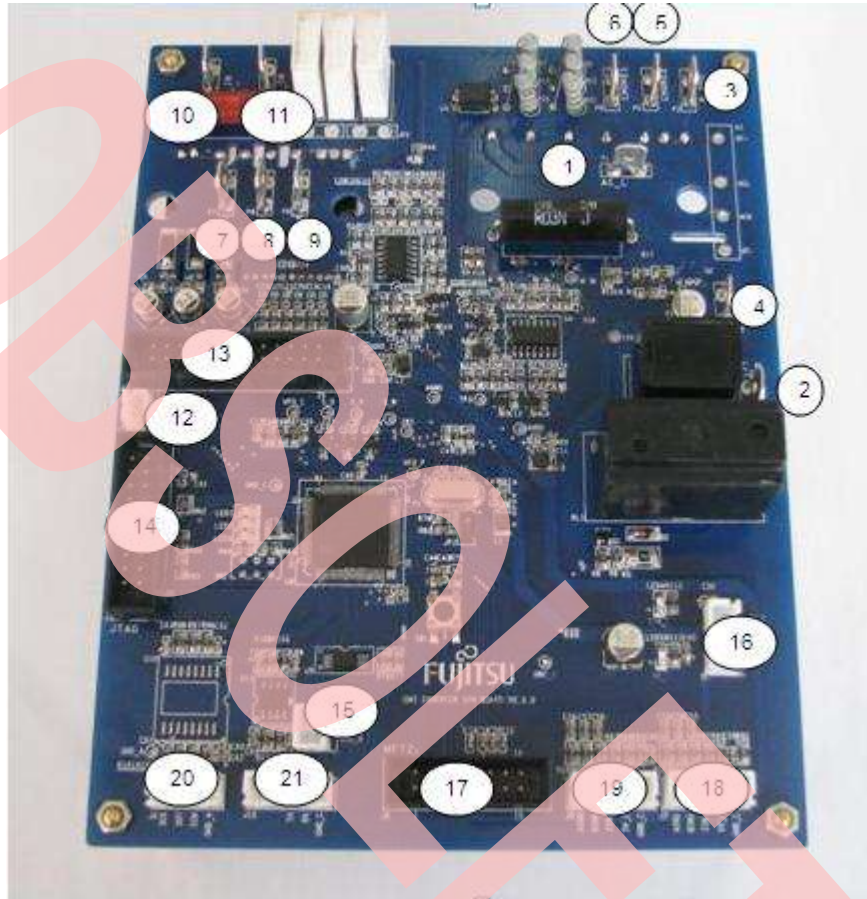


Table 2-3 collects the definition of the connectors on Inverter board.

**Table 3. Definition of the Connectors on Inverter board**

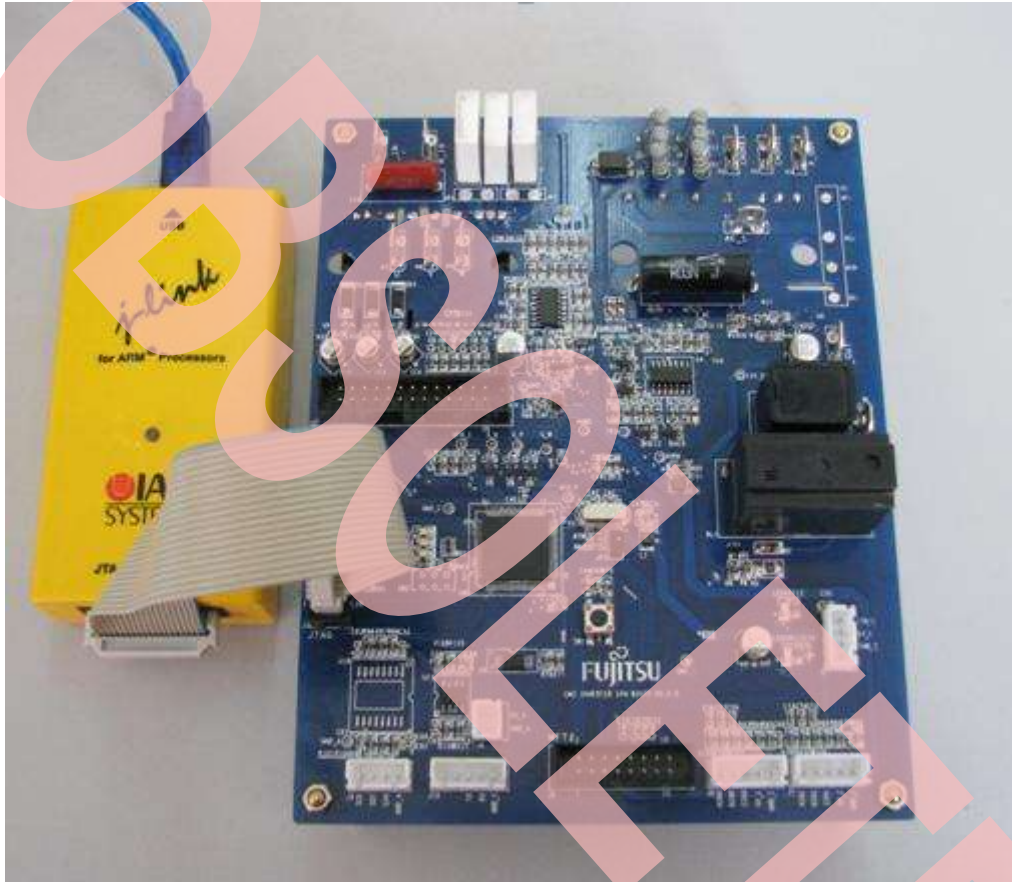
Number	Port Designator	Description
1	P1	L input (to P4 on power board)
2	P2	N input (to P5 on power board)
3	P3	PFC positive output (to P1 on DC-Link board)
4	P4	GND( to P2 on DC-Link board)
5	P5	PFC inductor connector
6	P6	PFC inductor connector
7	P7	Motor phase U
8	P8	Motor phase V
9	P9	Motor phase W
10	P10	DC bus positive input(to P3 on DC-Link board)
11	P11	GND(to P4 on DC-Link board)
12	J1	Serial programming port
13	J2	MFT1 port
14	J3	JTAG port
15	J4	5V_A input
16	J5	15V_C,5V_C input
17	J6	MFT2 port
18,19	J7,J8	Quadrature Position/Revolution counter interfaces
20	J9	Isolated SPI port
21	J10	Isolated UART port

#### 4.2.4 JTAG connection

The reference board supports standard 20-pin JTAG debugging and programming. By now, the user is recommended to use IAR system tools including the emulator and compiler since our project is developed with IAR system tools.

Figure 2-4 shows the connection between the reference systems with J-link.

Figure 6. JTAG Connection with IAR JTAG tool



#### 4.2.5 Connection Sequence

The recommended connection sequence is listed below. The user should ensure that the following sequence is met before connecting the system to the mains, a motor and a host computer.

1. Connect 15V and 5V from power board to inverter board.
2. Connect filtered AC mains supply from power board to inverter board.
3. Connect PFC or half-bridge rectifier module output to DC-Link board.

**Note:** Before any connection to DC-Link board, verify that the system is not powered and it is fully discharged (D1 off).

4. Connect DC-Link output to DC bus input on inverter board.
5. Connect the IDC-20A male to JTAG port (J3) on inverter board and connect the USB cable of J-Link to host computer.
6. Connect the U/V/W phase terminal to three phase compressor. (Please refer the figure 2-5. In the case of the compressor, U/V/W terminal connects to the clockwise compressor terminal.)
7. Connect the AC mains supply to power board.

**Note:** Make sure that the computer or reference board is connected to isolated AC mains supply before connecting the reference system with the J-link or host computer.



Figure 2-1 Connection between inverter board and compressor  
(For example, U is red line, V is black line, and W is blue line.)

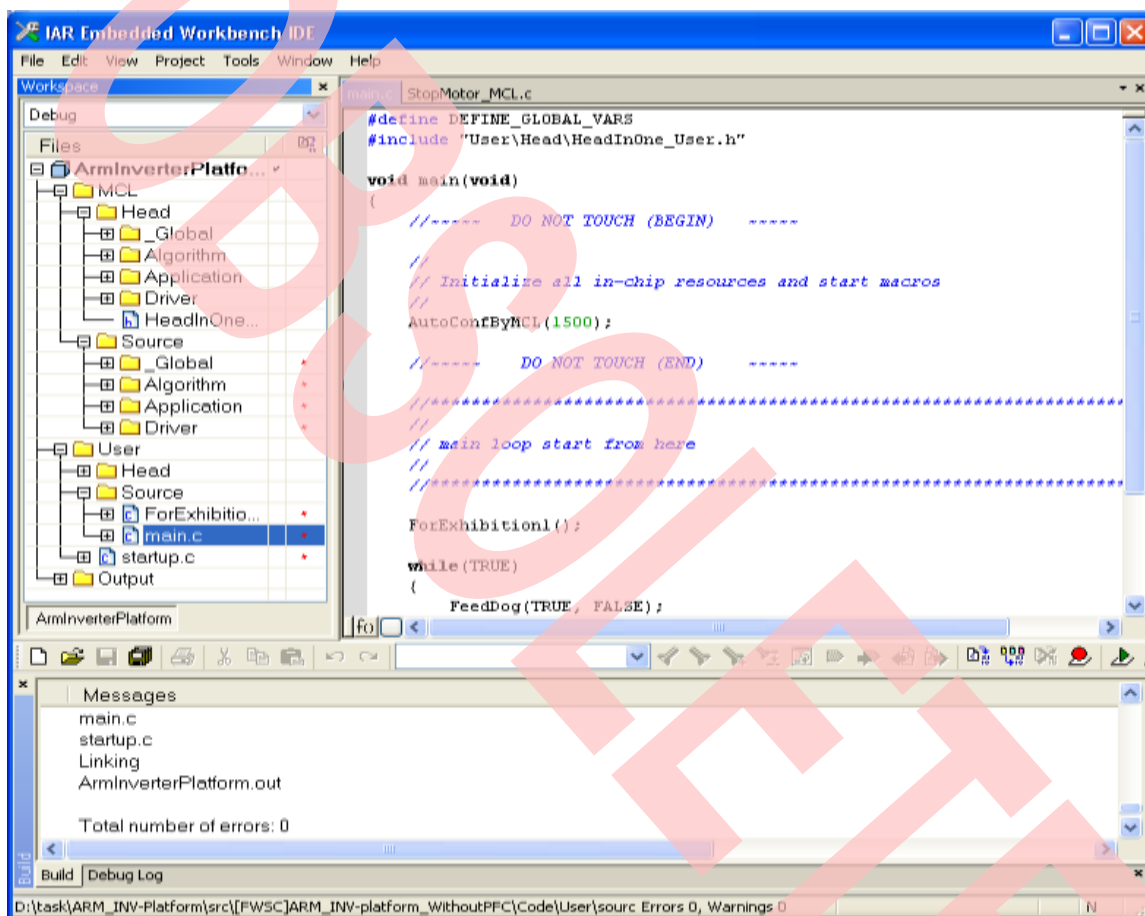
### 4.3 Debug the System

Before debugging, the IAR EWARM must be installed. The firmware is developed with it.

How to prepare for debugging, please refer as follows:

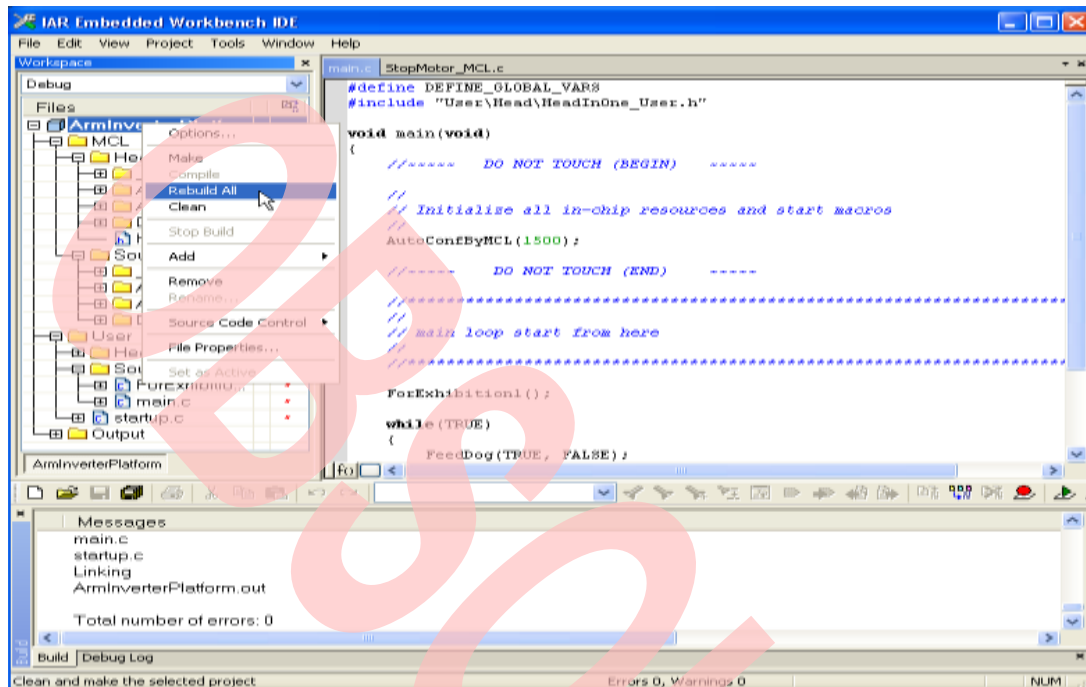
1. Open the target project.

Figure 7. View of Project



2. Click right button on the project name, and select *rebuild all*. The project will be rebuilt.

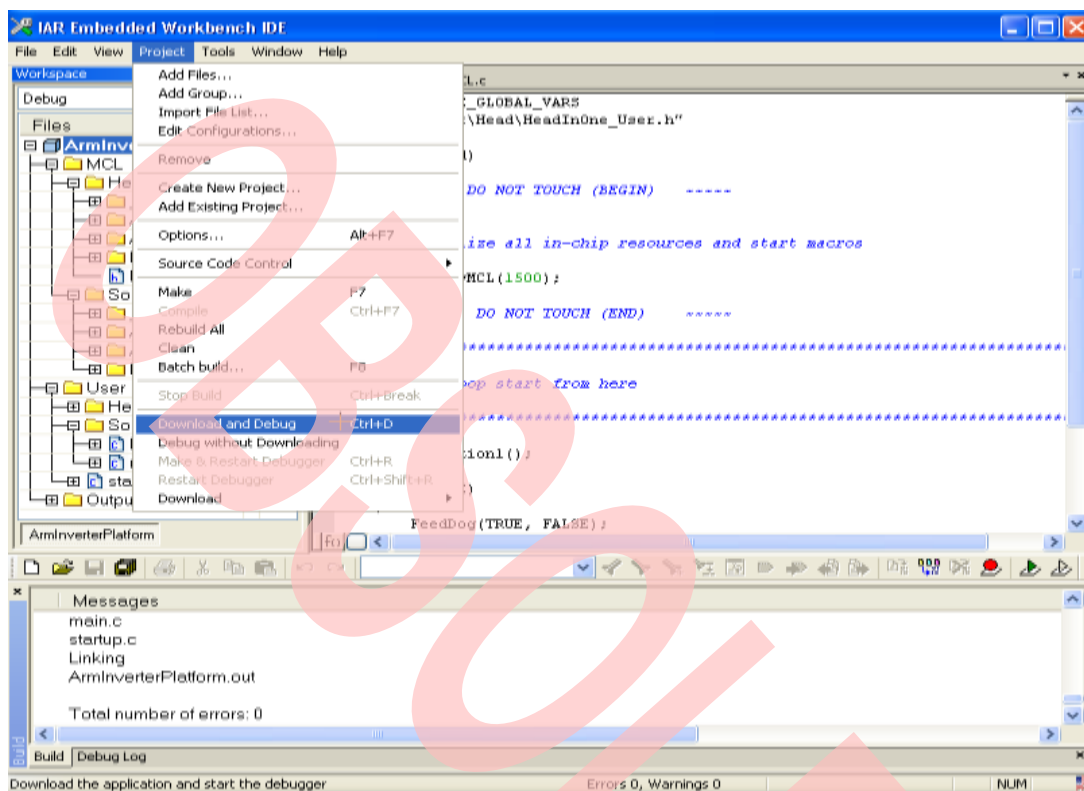
Figure 8. Rebuild the Project





### 3. Select Project->Download and Debug

Figure 9. Download and Debug the Project



For more information about the firmware project, please refer to the Users Manual of Firmware part.

## 4.4 FLASH programming using UART

The user can program the MCU with UART interface. Please prepare below items:

1. UART -to- RS232 conversion device (The board has the device.)
2. FLASH Serial programming software

The port for downloading is J1. It's definition is as below:

Table 4. Pin definition of J1

Pin of Port	Net lab	Description
1	PRO_RX	Data input
2	PRO_TX	Data output

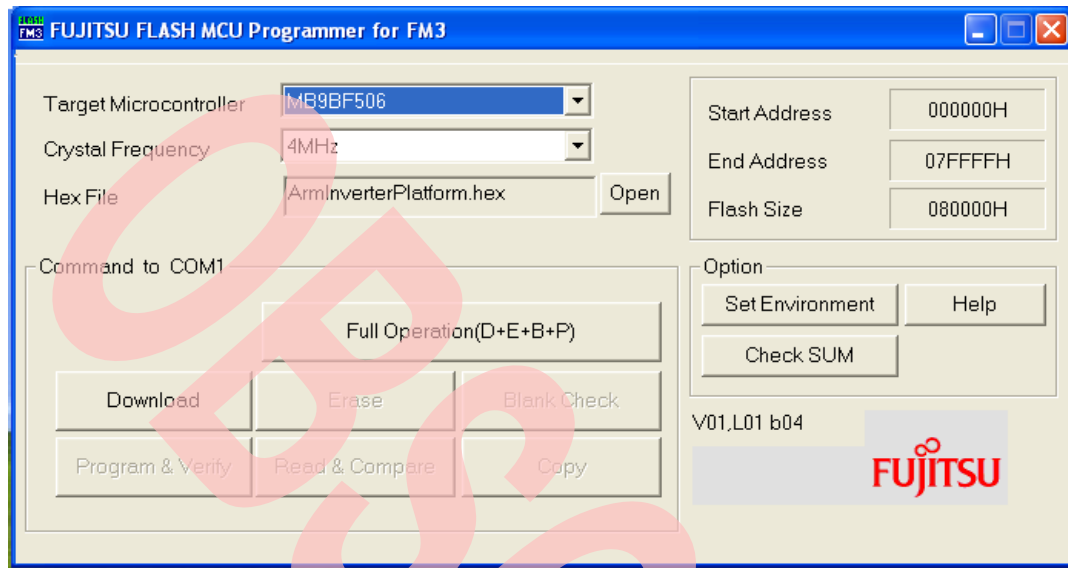
User can take these steps to programming the flash.

1. Connect the PC and reference board via UART- to- RS232.
2. Connect the jumper JP3 that keeps the MD0 'H'.
3. Push SW2 to keep the P60 'L level'.
4. Power on the reference board and reset the MCU by pressing the SW1.
5. Programming the flash using CYPRESS FLASH MCU Programmer for FM3.



Figure 10 shows the interface of software.

Figure 10. Cypress Flash MCU Programmer for FM3



## 5 Motor Control GUI

This chapter will introduce the GUI

### 5.1 Software Overview

Cypress provides a computer-based interface for this reference board. The GUI provides a wide range of control functions for motor operations. Not only can user set the speed and rotation direction, but only can observe the value of constants and variables, or configure the key parameter of the system.

This GUI supports Chinese and English language. The user can select one of them at the same time.

Figure 11 provides the main view of GUI.

Figure 11. View of GUI

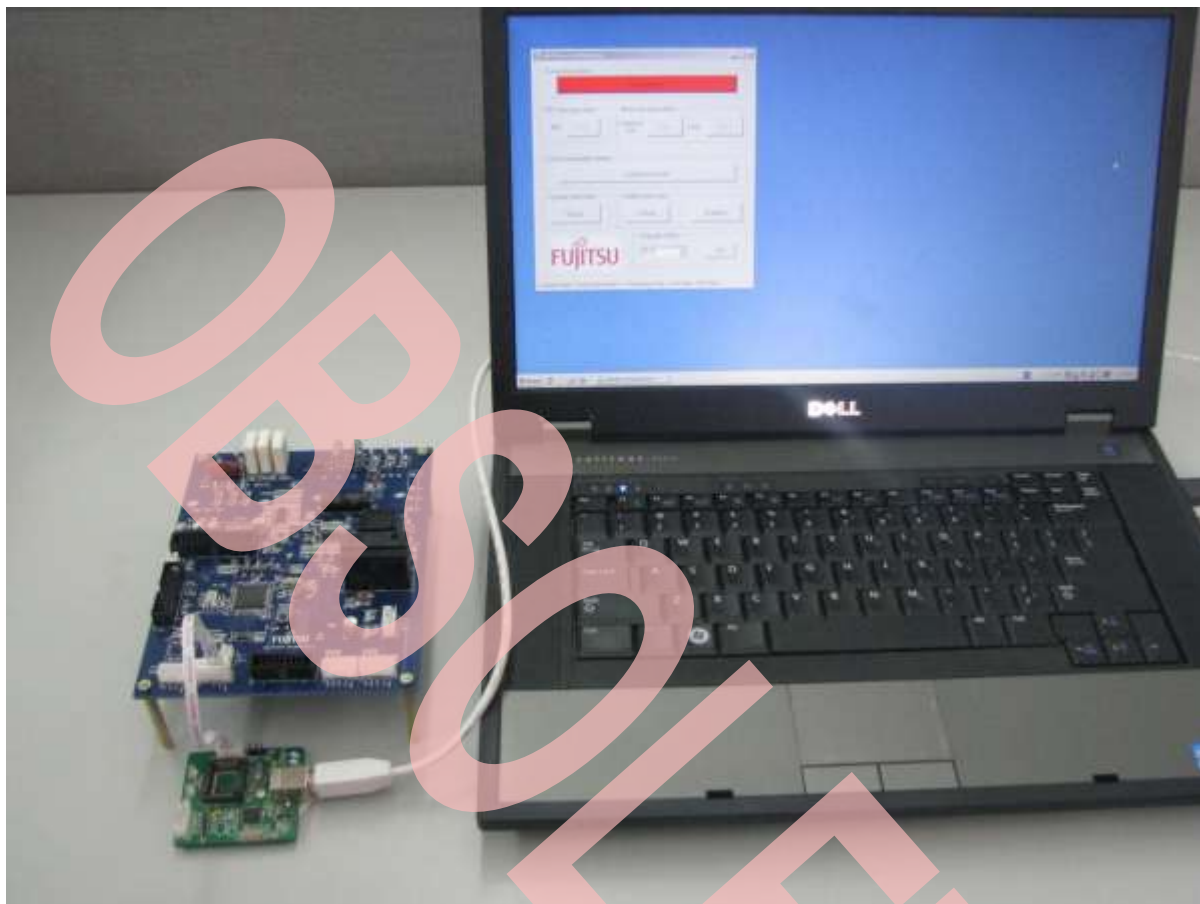


## 5.2 Setup the USB-to-UART connection

The reference board provides an isolated UART port to communicate with a USB-to-UART board. This board is connected to the PC through USB port. In order to ensure the communication, it is recommended shorting the length of wires.

The user can connect the communication kit as below:

Figure 12. USB-to-UART connection



For more information of GUI, please refer the *GUI user manual*.

## 6 Hardware

This chapter describes the hardware circuitry and components of the reference board.

### 6.1 Power Supply Board

This board contains the EMI filter circuit and the AC-to-DC module. It will supply AC mains and low voltage power rails to inverter board.

#### 6.1.1 EMI filter stage

This circuit consists of the following components:

- F1-- 15A/250VAC fast acting fuse
- ZR1, ZR2 -- Across the incoming AC power supply lines to suppress high energy transients.
- R1 -- The resistor that is used to discharge the C1 and C4 safely.
- L1, C2, and C3 -- These three components make up a common noise filter. C2, C3 are Y capacitors.
- C1, C4 -- Film capacitors to aid in the suppression of EMI.

### 6.1.2 Power supplies

The power board provides the 15-volt power supply using an isolated AC-to-DC power module (U1). The output voltage is regulated at 15-volt with a maximum output current of 1 A. As a result maximum power is 15W. This 15-volt power rail supplies to the PFC and IPM module directly, and three 5-volt power sources are generated. Two of them are created using line regulators (U2, U3) and another one is created using isolated DC-to-DC module (U4).

The 5V\_C is for MCU system including MCU, JTAG interface, one side of the isolation chips and current feedback circuit of PFC stage etc and 5V\_A is for another side of the isolation chips.

## 6.2 In-Rush Limiter

Three high voltage electrolytic capacitors are mounted on the circuit. There will be a huge current rush flows through the circuit when power is supplied. PTC (PTC1) connected in the AC\_L line can prevent the current rush. The relay (RL1) connected in panel with PTC is used to short the PTC after a short period when the current get into a normal range.

## 6.3 Active PFC Stage

### 6.3.1 Boost chopper

The active PFC circuit is a simple boost chopper type. It can control to aim ideal input current to follow the incoming main supply voltage waveform. A special module "FPAB30BH60" has full-bridge rectifier, IGBT, gate driver and fast recovering diode. It is used as core component of the PFC circuit. The input voltage range of the module is 90V-265VAC. The IGBT can tolerant with 600VAC-30A. For more information, please refer to datasheet of "FPAB30BH60".

To make up a boost chopper circuit, the user is required to add an external choke through existing connectors. The recommended specification of choke is 2~4 mH / 15A.

### 6.3.2 PFC feedback circuit

There are four feedback signals. These are required to implement digital PFC function. They are:

- Rectified input voltage
- DC bus voltage
- Rectified input current
- Rectified input voltage zero-crossing event

The rectified input voltage comes from the voltage divider that consists of R12, R13 and R16. The range of voltage is 0~4.0V when AC mains input range is from 90VAC to 265VAC. There is RC filter, made of R14 and C7, between some resistors and ADC pin. D3, diode, can limit to 5V as a maximum voltage.

As the rectified input voltage, the DC bus voltage comes from some resistors. It consists of R2, R3 and R8. DC bus voltage passes through the filter that is made of R4 and C2. D1, diode, can limit to 5V as a maximum voltage.

Rectified input current is measured using the shunt resistor R17 and the amplifier U4C unit. The gain of amplifier is set at 5.

Rectified input voltage zero-crossing event is sensed using a voltage divider (R21, R22) and an opt-coupler (U3).

### 6.3.3 Fault circuit

**DC Bus Over-voltage**, this fault signal is generated when the maximum voltage limit on the DC bus rails is reached. The threshold value is set to 390 V. The comparison of the threshold value and the amplified DC bus voltage is done by amplifier unit U4C. The threshold limit is set by R31 and R32.

**DC Bus Over-current**, this fault signal is generated when the maximum current limit of 16A is reached. The comparison of the threshold value and the actual current is done by amplifier unit U4B. The threshold limit is set by R27 and R29.

## 6.4 3- Phase Invert Stage

### 6.4.1 Power Module

The three-phase inverter is embedded in a power module (U5). This power module contains:

- 600V/15A 3-phase IGBT Inverter Bridge
- built-in bootstrap diode and VS output
- Short-circuit protection
- Divided negative dc-link terminals for inverter current sensing applications
- Gate Driver Power Supply Under-voltage protection
- Single-grounded power supply
- Isolation rating of 2000Vrms/min
- Maximum switching frequency: 20 kHz

The MCU provides the PWM signals to this power module in order to turn on/off the IGBT, therefore the power is applied to the motor phases.

Two fault conditions will turn off the low side IGBTs:

- a. Under-voltage of 15V (high side).
- b. The voltage on CSC pin is higher than 0.5V.

At the same time the module will output low level from VFO pin. A pull-up resistor is needed on VFO pin because it is open-collector type.

If you want to know more detail, please refer to the each device's datasheet.

#### 6.4.2 Feedback Circuit

**Inverter Leg Shunt Resistor Feedback**, a shunt resistor is located between the emitter of the low side switches U, V, W and the “-DC bus”. A simple differential amplifier circuit is used as shown in Appendix A. The operation of the circuit used for the U-phase leg is described below:

The current is measured using the shunt resistor R43 and the operational amplifier L224D (U6C); R50, R51, R53, R54 and R55 set the gain. The output of the TL431 (U7) shifts the voltage of the shunt resistor with 2.5V DC offset level. Hence the voltage applied to the

ADC of MCU channel varies within 2.5~4.75V. R52 and C27 filter out the high-frequency noise. The same topology is used for the phase V,W.

**Quadrature Position/Revolution Counter (QPRC) Feedback**, this feedback signal provides exact rotor position to the MCU. There are two QPRCS in the MCU. Each counter contains three channels A, B and Z. They are pulled up to the +5V by resistors respectively. J7, J8 are used as the feedback signal input ports. The boards can supply + 5V to the optical-electric encoder which is fixed in the motor through the port.

#### 6.4.3 Fault Circuitry

**Phase Over-current Protection**, an operational amplifier (U6D) acts as a comparator to compare the amplified voltages on shunt resistors with the regulated 2.5V. One channel of voltage is higher than 4.75V DC. The U6D will output a high level up to 13.5V to the power module. This fault signal can turn the low side IGBTs off.

The threshold of the phase over-current protection can set 15A as default value.

## 6.5 MFT1 and MFT2 Ports

The MB9B500 Serial MCU is embedded with two Multi-Function Timer (MFT) modules. This reference provides two ports to output or input MFT control and feedback signals. The J2 port contains four parts: motor control, motor feedback, PFC control and PFC feedback. The J6 contains two parts: motor control and feedback.

Table 4-1 shows the pin definition of J2.

**Table 5. Pin Definition of J2**

Pin of Port	Net lab	Description
1	PWM_UP	High side signal for U phase
2	PWM_VP	High side signal for V phase
3	PWN_WP	High side signal for W phase
4	PWM_UN	Low side signal for U phase
5	PWM_VN	Low side signal for V phase
6	PWN_WN	Low side signal for W phase
7	GND_C	Digital GND
8	5V_C	5V
9	15V_C	15V
10	VFO_IPM	Fault signal from IPM
11	GND_C	Digital GND
12	S_U	U phase current
13	S_V	V phase current
14	S_W	W phase current
15	IPM_RTH	Temperature of IPM
16	RLY	System relay
17	I_AC	System current
18	V_DC	DC bus voltage
19	V_AC	Rectified AC voltage
20	PFC_RTH	Temperature of PFC module
21	GND_C	Digital GND
22	Zero Check	Zero-crossing event detection
23	PRT_DC	Over-voltage protection
24	VFO_PFC	Fault signal from PFC module
25	PWM_PFC	PWM signal to PFC module
26	NULL	not connected



Table 4-2 shows the pin definition of J6.

**Table 6. Pin Definition of J6**

Pin of Port	Net lab	Description
1	PWM_UP_EXT	High side signal for U phase of extended IPM
2	PWM_VP_EXT	High side signal for V phase of extended IPM
3	PWM_WP_EXT	High side signal for W phase of extended IPM
4	PWM_UN_EXT	Low side signal for U phase of extended IPM
5	PWM_VN_EXT	Low side signal for V phase of extended IPM
6	PWM_WN_EXT	Low side signal for W phase of extended IPM
7	GND_C	Digital GND
8	5V_C	5V_C
9	15V_C	15V_C
10	VFO_IPM_EXT	Fault signal from extended IPM
11	NULL	not connected
12	S_U_EXT	U phase current from extended motor
13	S_V_EXT	V phase current from extended motor
14	S_W_EXT	W phase current from extended motor
15	IPM_RTH_EXT	Temperature of extended IPM
16	NULL	not connected

## 6.6 Isolated Ports

These isolated ports are powered by an isolated DC-to-DC. It provides galvanic isolation rated up to 1500 VDC/second.

### 6.6.1 Isolated SPI

This interface is based on the trip-channel digital isolator ISO7231A. It has two channels, one is in direction and the other channel is in opposition. The communication speed is up to 1Mbps.

### 6.6.2 Isolated UART

This interface is based on the ISO7221B which provides two isolation channels. The channels are oriented in opposite directions. The communication speed is up to 5Mbps.

## 6.7 Serial Programming Port

Except the JTAG port, the user can program the MCU by serial programming port-J1.

This port is connected to the UART0 with the RX pin connected the +5V by a resistor R79.

The SW2 is used to shift the level on P60, as well as JMP3 is used to shift the level on MD0.

When P60 = 0 and MD0 = 1, the programming is allowed, or it is disabled.

### 7.1.1 Power Board

Figure 13. Power Board

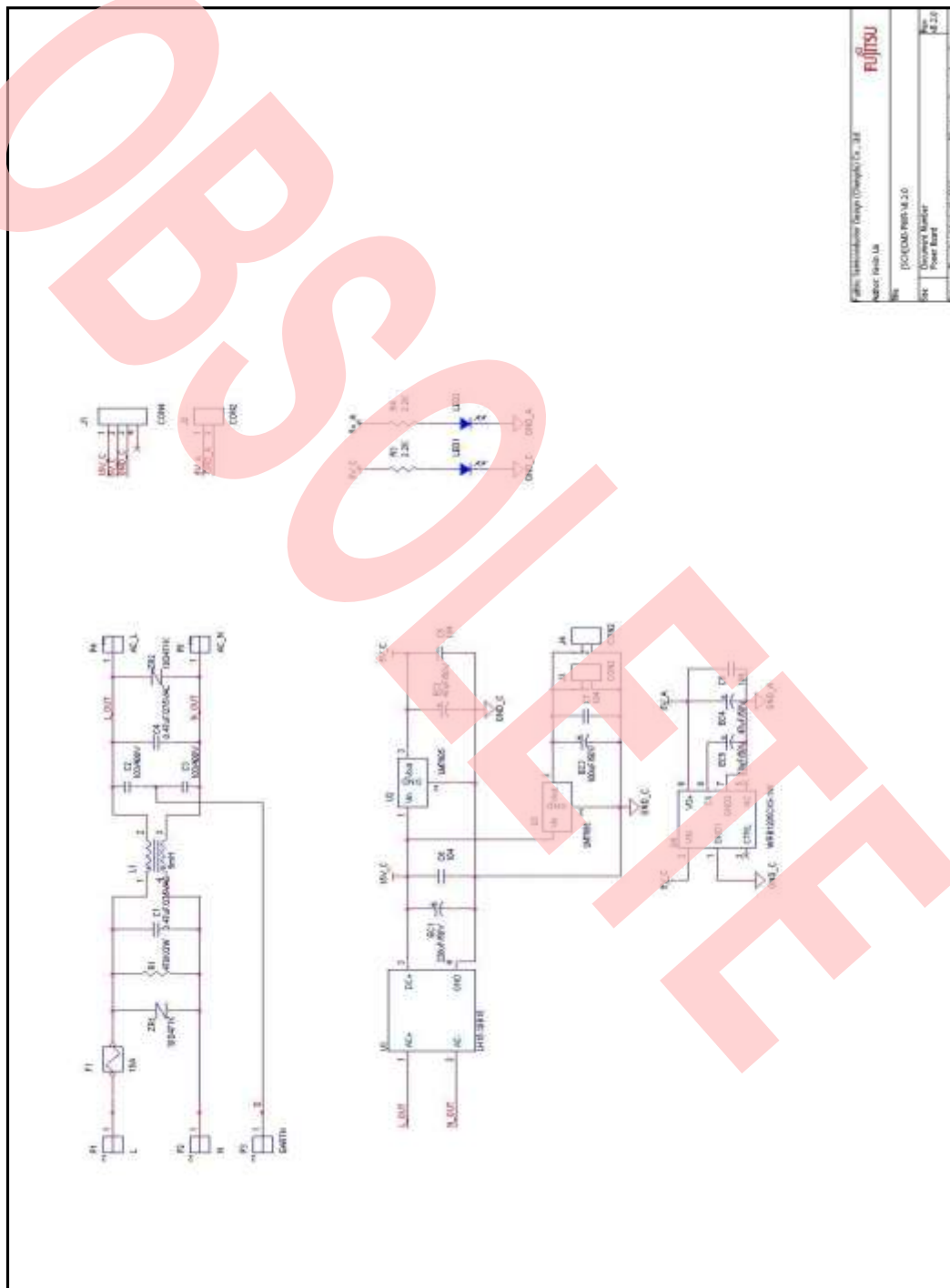
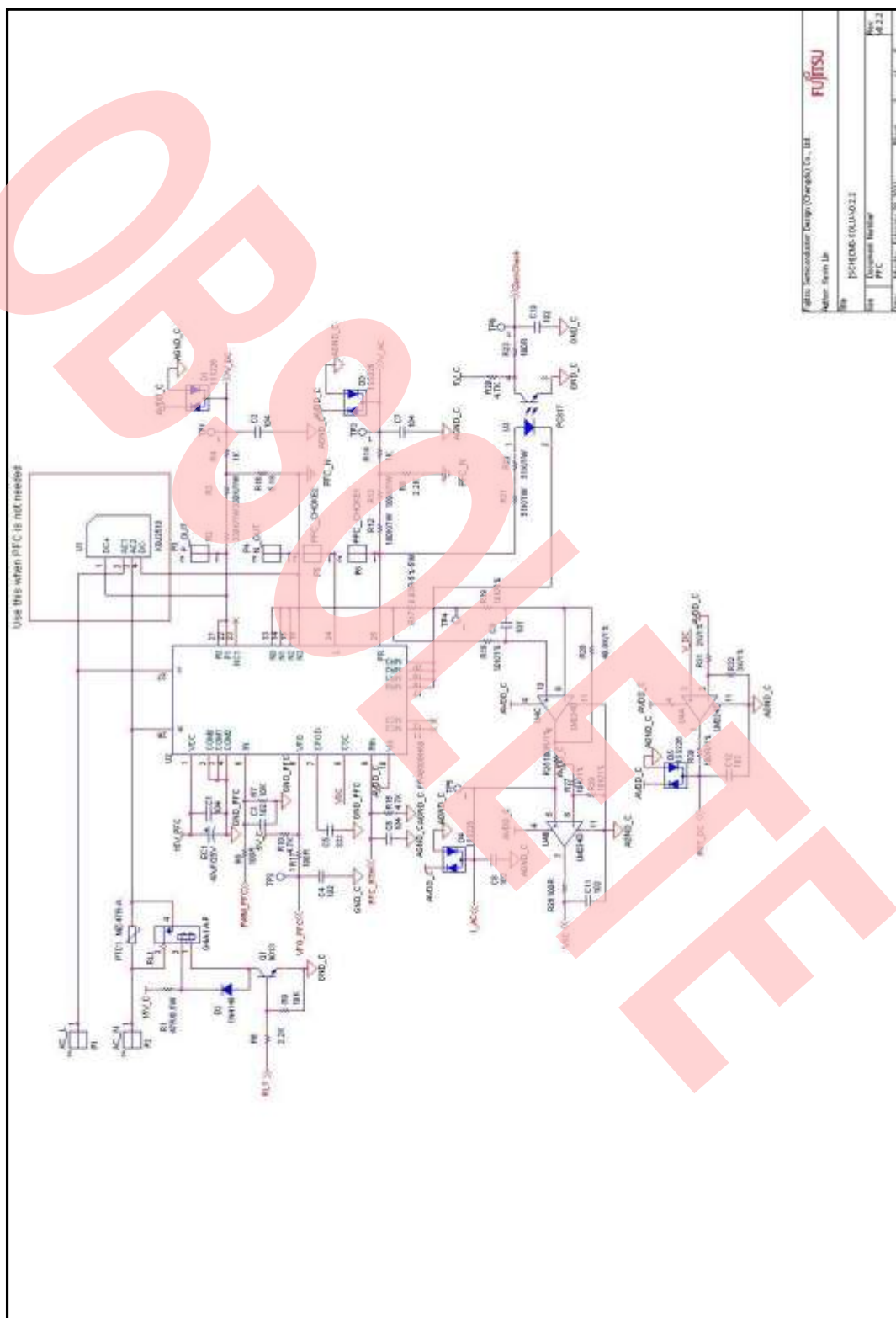


Figure 14. PFC stage



The diagram illustrates a precision temperature measurement circuit. It begins with a 5V regulator section consisting of a 100k potentiometer (POT) and a 100Ω resistor (R1) connected to a 5V supply. The wiper of the potentiometer is connected to the non-inverting input of the first op-amp stage (U1A). The feedback path of U1A is a 100k resistor (R2) connected to its output. The output of U1A is connected to the non-inverting input of the second op-amp stage (U1B). The feedback path of U1B is a 100k resistor (R3) connected to its output. The output of U1B is connected to the non-inverting input of the third op-amp stage (U1C). The feedback path of U1C is a 100k resistor (R4) connected to its output. The output of U1C is connected to a 100Ω load resistor (R5) and a 100μF electrolytic capacitor (C1) connected to ground. The circuit is powered by a 5V supply and a 100k resistor (R6) connected to ground. The output is labeled as 10mV/°C.

**Component List:**

- 5V Regulator: 100k POT, 100Ω R1
- Op-Amp: LM324 (U1A, U1B, U1C)
- Resistors: 100k R2, R3, R4, R6; 100Ω R1, R5
- Capacitor: 100μF C1
- RTD: 100Ω

**Pin Connections:**

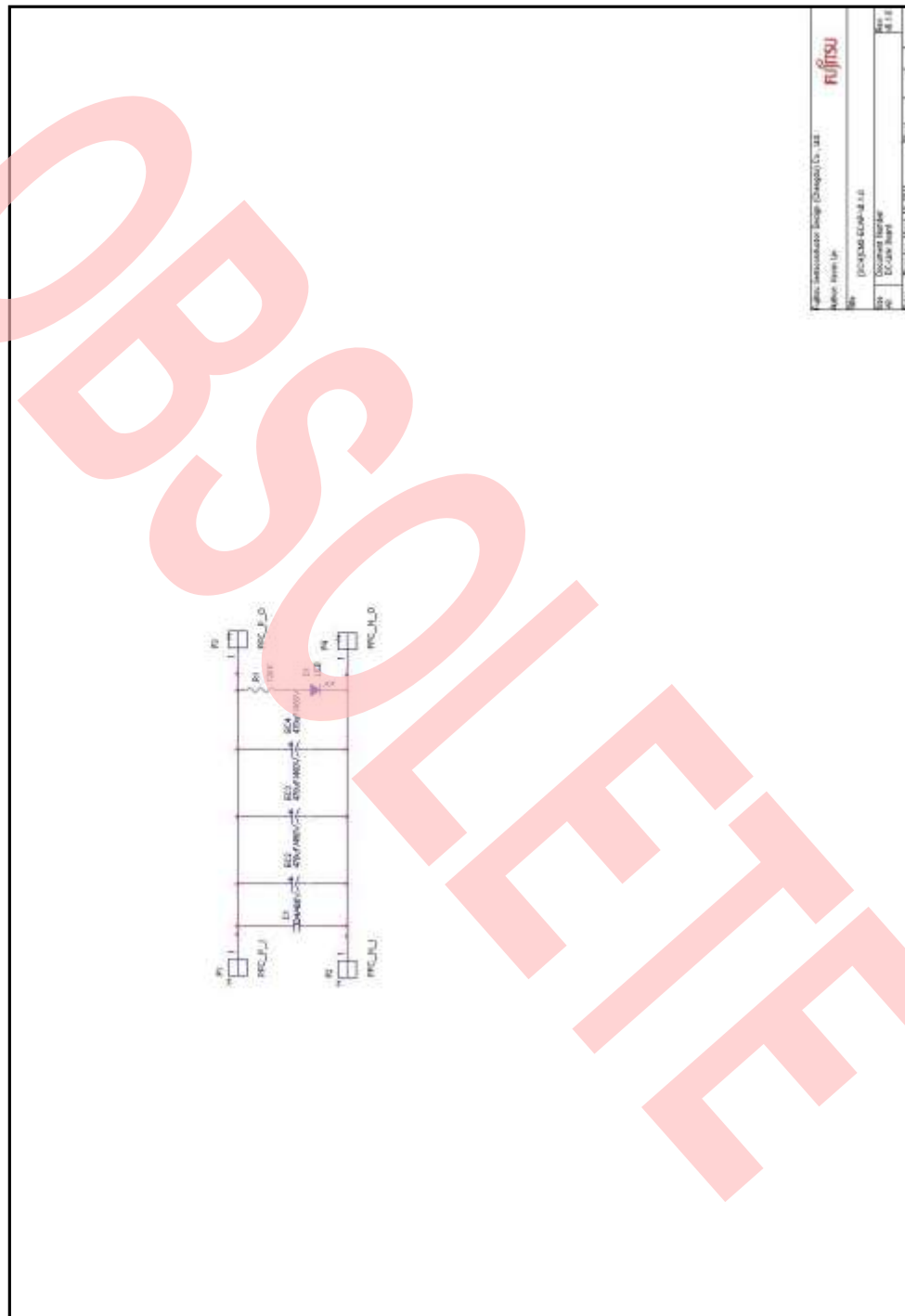
- U1A: 1 (V+), 2 (V-), 3 (V-), 4 (V-), 5 (V-), 6 (V-), 7 (V-), 8 (V-), 9 (V-), 10 (V-), 11 (V-), 12 (V-), 13 (V-), 14 (V-), 15 (V-), 16 (V-), 17 (V-), 18 (V-), 19 (V-), 20 (V-), 21 (V-), 22 (V-), 23 (V-), 24 (V-), 25 (V-), 26 (V-), 27 (V-), 28 (V-), 29 (V-), 30 (V-), 31 (V-), 32 (V-), 33 (V-), 34 (V-), 35 (V-), 36 (V-), 37 (V-), 38 (V-), 39 (V-), 40 (V-), 41 (V-), 42 (V-), 43 (V-), 44 (V-), 45 (V-), 46 (V-), 47 (V-), 48 (V-), 49 (V-), 50 (V-), 51 (V-), 52 (V-), 53 (V-), 54 (V-), 55 (V-), 56 (V-), 57 (V-), 58 (V-), 59 (V-), 60 (V-), 61 (V-), 62 (V-), 63 (V-), 64 (V-), 65 (V-), 66 (V-), 67 (V-), 68 (V-), 69 (V-), 70 (V-), 71 (V-), 72 (V-), 73 (V-), 74 (V-), 75 (V-), 76 (V-), 77 (V-), 78 (V-), 79 (V-), 80 (V-), 81 (V-), 82 (V-), 83 (V-), 84 (V-), 85 (V-), 86 (V-), 87 (V-), 88 (V-), 89 (V-), 90 (V-), 91 (V-), 92 (V-), 93 (V-), 94 (V-), 95 (V-), 96 (V-), 97 (V-), 98 (V-), 99 (V-), 100 (V-)

[illegible]

The image displays seven circuit diagrams for the FUJITSU 16C4500-0101-0000 encoder. The diagrams are arranged in a grid-like fashion. The first diagram, labeled 'TAG', shows a simple connection to a 5V supply. The second, 'POWER', shows a more complex power supply regulation circuit. The third, 'CONTROL PORT I', and fourth, 'CONTROL PORT II', show control signal connections. The fifth, 'OPTICAL-EEC ENCODER INTERFACE', shows the connection to an optical encoder. The sixth, 'SPI', and seventh, 'UART', show serial communication interfaces. Each diagram includes component values and pin connections.

### 7.1.3 DC-Link Board

Figure 18. DC-Link Board





## 8 Document History

Document Title: AN7204371 - FM3 MB9B100A/300A/400A/500A Series Microcontroller Inverter Reference Board

Document Number: 002-04371

Revision	ECN	Orig. of Change	Submission Date	Description of Change
**	—	CBZH	07/13/2011	Initial release
*A	5029057	CBZH	02/12/2016	Migrated Spansion Application Note AN706-00042-1v0-E to Cypress format Document Obsoleted

## Worldwide Sales and Design Support

Cypress maintains a worldwide network of offices, solution centers, manufacturer's representatives, and distributors. To find the office closest to you, visit us at [Cypress Locations](#).

## Products

Automotive	<a href="http://cypress.com/go/automotive">cypress.com/go/automotive</a>
Clocks & Buffers	<a href="http://cypress.com/go/clocks">cypress.com/go/clocks</a>
Interface	<a href="http://cypress.com/go/interface">cypress.com/go/interface</a>
Lighting & Power Control	<a href="http://cypress.com/go/powerpsoc">cypress.com/go/powerpsoc</a>
Memory	<a href="http://cypress.com/go/memory">cypress.com/go/memory</a>
PSoC	<a href="http://cypress.com/go/psoc">cypress.com/go/psoc</a>
Touch Sensing	<a href="http://cypress.com/go/touch">cypress.com/go/touch</a>
USB Controllers	<a href="http://cypress.com/go/usb">cypress.com/go/usb</a>
Wireless/Rf	<a href="http://cypress.com/go/wireless">cypress.com/go/wireless</a>
Spansion Products	<a href="http://spansion.com/products">spansion.com/products</a>

## PSoC® Solutions

[psoc.cypress.com/solutions](http://psoc.cypress.com/solutions)

[PSoC 1](#) | [PSoC 3](#) | [PSoC 4](#) | [PSoC 5LP](#)

## Cypress Developer Community

[Community](#) | [Forums](#) | [Blogs](#) | [Video](#) | [Training](#)

## Technical Support

[cypress.com/go/support](http://cypress.com/go/support)

All other trademarks or registered trademarks referenced herein are the property of their respective owners.



Cypress Semiconductor  
198 Champion Court  
San Jose, CA 95134-1709

Phone : 408-943-2600  
Fax : 408-943-4730  
Website : [www.cypress.com](http://www.cypress.com)

© Cypress Semiconductor Corporation, 2011-2016. The information contained herein is subject to change without notice. Cypress Semiconductor Corporation assumes no responsibility for the use of any circuitry other than circuitry embodied in a Cypress product. Nor does it convey or imply any license under patent or other rights. Cypress products are not warranted nor intended to be used for medical, life support, life saving, critical control or safety applications, unless pursuant to an express written agreement with Cypress. Furthermore, Cypress does not authorize its products for use as critical components in life-support systems where a malfunction or failure may reasonably be expected to result in significant injury to the user. The inclusion of Cypress products in life-support systems application implies that the manufacturer assumes all risk of such use and in doing so indemnifies Cypress against all charges.

This Source Code (software and/or firmware) is owned by Cypress Semiconductor Corporation (Cypress) and is protected by and subject to worldwide patent protection (United States and foreign), United States copyright laws and international treaty provisions. Cypress hereby grants to licensee a personal, non-exclusive, non-transferable license to copy, use, modify, create derivative works of, and compile the Cypress Source Code and derivative works for the sole purpose of creating custom software and or firmware in support of licensee product to be used only in conjunction with a Cypress integrated circuit as specified in the applicable agreement. Any reproduction, modification, translation, compilation, or representation of this Source Code except as specified above is prohibited without the express written permission of Cypress.

Disclaimer: CYPRESS MAKES NO WARRANTY OF ANY KIND, EXPRESS OR IMPLIED, WITH REGARD TO THIS MATERIAL, INCLUDING, BUT NOT LIMITED TO, THE IMPLIED WARRANTIES OF MERCHANTABILITY AND FITNESS FOR A PARTICULAR PURPOSE. Cypress reserves the right to make changes without further notice to the materials described herein. Cypress does not assume any liability arising out of the application or use of any product or circuit described herein. Cypress does not authorize its products for use as critical components in life-support systems where a malfunction or failure may reasonably be expected to result in significant injury to the user. The inclusion of Cypress' product in a life-support systems application implies that the manufacturer assumes all risk of such use and in doing so indemnifies Cypress against all charges.

Use may be limited by and subject to the applicable Cypress software license agreement.