



Please note that Cypress is an Infineon Technologies Company.

The document following this cover page is marked as “Cypress” document as this is the company that originally developed the product. Please note that Infineon will continue to offer the product to new and existing customers as part of the Infineon product portfolio.

Continuity of document content

The fact that Infineon offers the following product as part of the Infineon product portfolio does not lead to any changes to this document. Future revisions will occur when appropriate, and any changes will be set out on the document history page.

Continuity of ordering part numbers

Infineon continues to support existing part numbers. Please continue to use the ordering part numbers listed in the datasheet for ordering.

WirelessUSB™ Dual Antenna Design Layout Guidelines

Author: Rich Peng

Associated Project: No

Associated Part Family: WirelessUSB™

Software Version: NA

Related Application Notes: None

To get the latest version of this application note, or the associated project file, please visit
<http://www.cypress.com/go/AN5033>.

AN5033 describes the guidelines for the antenna design and in particular, addresses the design of an integrated printed trace wiggly antenna implementation on a reference printed circuit board (PCB).

The Antenna as a Component of your Wireless Communication Product Design

The development of small integrated antenna facilitates the application of the Cypress WirelessUSB™ chip as an integrated wireless communication solution. WirelessUSB is the code name for a technology specification (Cypress Semiconductor's proprietary) for small form factor, low cost, short range radio links between mobile, desktop PCs, and other portable devices. The antenna is an integral part of any wireless communication system. It is the interface between a radio module and atmosphere.

A properly designed antenna facilitates the evaluation, characterization, and production test correlation of the WirelessUSB radio. In designing a short-range radio data communication system, the product/system designer faces one of the most important tasks, the antenna design. The key parameters are the antenna size, cost of implementation, radiation effectiveness, ease of manufacturability, and range performance. These recommendations have been tested and proven by Cypress Semiconductor to ensure optimal radio performance when combining RF analog circuitry with other low-frequency analog and digital board components.

The purpose of an antenna is to transmit/receive electromagnetic waves to and from the atmosphere. The selection of the antenna for a WirelessUSB solution can have a big impact on wireless communication system performance, system form factor, and cost. The primary functions of an antenna are to provide the transfer of electromagnetic energy to and from the atmosphere and match the impedance of the transmission line feed (typically 50 ohms) and the impedance of free space (377 ohms).

An antenna essentially provides a means of converting electrical energy into electromagnetic waves for transmission and reconverts the electromagnetic waves into electrical energy for reception. There are several properties of the antenna that affect the performance of a wireless communication system utilizing the Cypress WirelessUSB system radio chip. This application note describes a printed trace wiggly antenna design considerations and implementation guidelines for incorporating the WirelessUSB radio system chip into product applications in the ISM frequency band 2.4–2.5 GHz.

Antenna Design Guidelines for WirelessUSB System Radio Chip Applications

The most challenging parameter in designing the antenna in consumer, industrial, scientific, and medical applications is the environmental impact. The operating environment parameters include indoor, outdoor, building materials, high-rise buildings, factories, and major highways. The physical environment parameters are related to the immediate physical structure surrounding the antenna, such as the placement of the antenna within a product package, the material of the enclosure, the human body, and the surrounding electronic/mechanical components. Therefore a significant amount of characterization, testing, validation, and measurement have to be completed to optimize the antenna design.

We have to consider several important antenna characteristics to achieve required antenna performance before deciding on the type of antenna and its implementation. In today's wireless communication product design the choice of antenna selection is more critical and challenging depending upon the application demands in terms of cost, physical constraints, and product packaging.

Antenna Types

There are many different types of antennas. Antennas most relevant to 2.4–2.5 GHz designs are:

- Dipole antennas
- Sleeve dipole antennas
- Loop antennas
- Helical antennas
- Whip (Monopole) antennas
- Ceramic chip antennas
- Slotted antennas
- Printed/planar inverted –F antennas
- Printed trace wiggle antennas
- Microstrip patch antennas

Each type of antenna has its own advantages and disadvantages depending upon the application. The optimal antenna solution is one that is part of mechanical structure or physical housing for achieving low-cost and consistency in performance.

PCB Materials — Choose the Right One for Your Application

A variety of different materials are used to fabricate PCBs. These materials can also be assembled in a variety of different ways potentially using multiple laminates, different materials, and different plated through via structures. A range of finishes can also be used for making use of materials, such as gold, nickel, tin, and lead. The board material of choice for radio circuit application is FR4.

PCB materials are available in various grades as defined by the National Electrical Manufacturers Association (NEMA). It would be convenient for designers if NEMA was closely allied with the electronics industry — controlling parameters such as resistivity and dielectric constant of the material. Unfortunately, that is not the case. NEMA is an electrical safety organization, and the different PCB grades primarily describe the flammability, high temperature stability, and moisture absorption of the board. Therefore, specifying a given NEMA grade does not guarantee electrical parameters of the material. If this becomes critical, consult the manufacturer of the raw board stock.

Raw PCB stock is graded in flammability ratings (FR) from 1 to 5, with 1 being the most flammable and 5 the least. FR-4 is commonly used in industrial quality equipment, while FR-2 is used in high volume consumer applications. Although there are no set rules for this, it appears to be an industry “standard”. Deviating from it without good reason can limit the number of suppliers for raw board material and PCB houses that can fabricate the board, as their tooling is already set up for these materials.

In selecting a board material, pay careful attention to moisture absorption. Just about every desirable performance characteristic of the board will be negatively impacted by moisture. This includes surface resistance of the board, dielectric leakage, high voltage breakdown and arcing, and mechanical stability. Also pay attention to operating temperature. High operating temperatures can occur in unexpected places, such as in proximity to large digital chips that are switching at high speeds. Be aware that heat rises, so if one of the fast switching ICs is located directly under a sensitive analog circuit — both the PCB and circuit characteristics may vary with the temperature.

How Many Layers are Best?

Many times, the number of board layers already has been determined by system constraints. If the designer has a choice, however, there are some guidelines. Very simple consumer electronics are sometimes fabricated on single-sided PCBs, keeping the raw board material inexpensive (FR-1 or FR-2) with thin copper cladding. These designs frequently include many jumper wires — simulating the circuit routing on a double-layer board. This technique is only recommended for low frequency circuitry. For reasons described below this type of design is extremely susceptible to radiated noise. Therefore, it is actually more complex to design a board of this type due to the many things that can go wrong.

The next level of complexity is double layer. Initially, this type of board would seem to lend itself to easier routing, because now there are two layers of foil, and it is possible to route signals by crossing traces on different layers. While that is certainly possible, it is not recommended for analog circuitry. Wherever possible the bottom layer should be devoted to a continuous ground plane and all other signals routed on the top layer. A ground plane provides several benefits.

Ground is frequently the most common connection in the circuit. Having it continuous on the bottom layer usually makes the most sense for circuit routing. It increases mechanical strength of the board. It lowers the impedance of all ground connections in the circuit which reduces undesirable conducted noise. It adds a distributed capacitance to every net in the circuit, helping to suppress radiated noise. It acts as a shield to radiated noise coming from underneath the board.

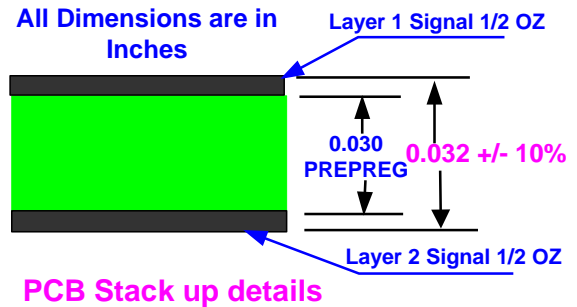
PCB Manufacturing Specifications

PCB designers provide PCB manufacturers detailed instructions regarding how a PCB is to be constructed including material, thickness, and international standards to be followed. These instructions are typically provided in the Fabrication Notes.

Below are some specifications Cypress uses in specifying a two-layer PCB for use with the WirelessUSB radio.

- Material
 - Type FR-4 epoxy glass laminate and prepreg
 - HTE Copper ½ oz copper foil external layers
 - Overall metal-to-metal thickness 0.0032 inches ± 10%
- Drilling
 - Diameters in the drill table are finished hole sizes ± 0.003-inch tolerance, unless otherwise specified in the drill table
 - Teardrop allowed on entry of via on every trace layer
- Copper plating
 - In through-holes 0.001 inches minimum
- Silkscreen
 - In white non-conductive epoxy ink on both sides of board, if applicable.
- Solder mask
 - Primary and secondary side of board using liquid photoimage mask material over bare copper per IPC-SM-840
- Copper finish
 - Shall be tin- or gold-plated (10 μ-inch minimum)
- Manufactured boards
 - To be in accordance with performance standard IPC-6011/6012 Class-2 board to be inspected per IPC-600-A Class-2
- Maximum wrap or twist
 - Shall not exceed 0.01 in/in

Figure 1. PCB Stack-up Details



General guidelines are given, which will aid in designing a printed trace Wiggle antenna on a PCB. These suggestions should be evaluated and optimized for each individual process and design. Many factors affect the overall RF characteristics of a design and can be examined and verified with PCB simulation and analysis tools.

Radio Module with Wiggle Antenna

The radio module printed circuit board is implemented on a two-layer board using low-cost FR-4 material. The picture of dual wiggle antenna as implemented on Cypress reference radio module is shown in Figure 2 and Figure 3. The Wiggle trace antenna and RF grounding details implemented on the reference radio module are shown in Figure 4 and Figure 5.

Figure 2. Dual Wiggle Antenna Top Side as Implemented on Cypress Reference Radio Module

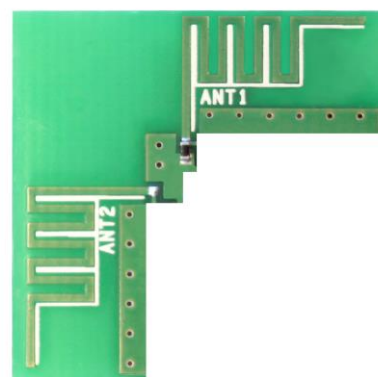


Figure 3. Dual Wiggle Antenna Bottom Side as Implemented on Cypress Reference Radio Module

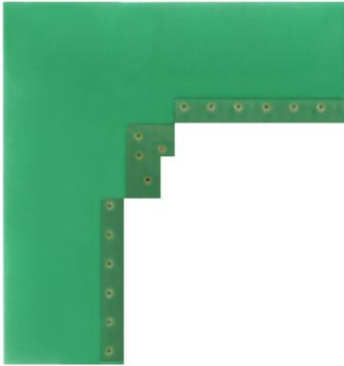
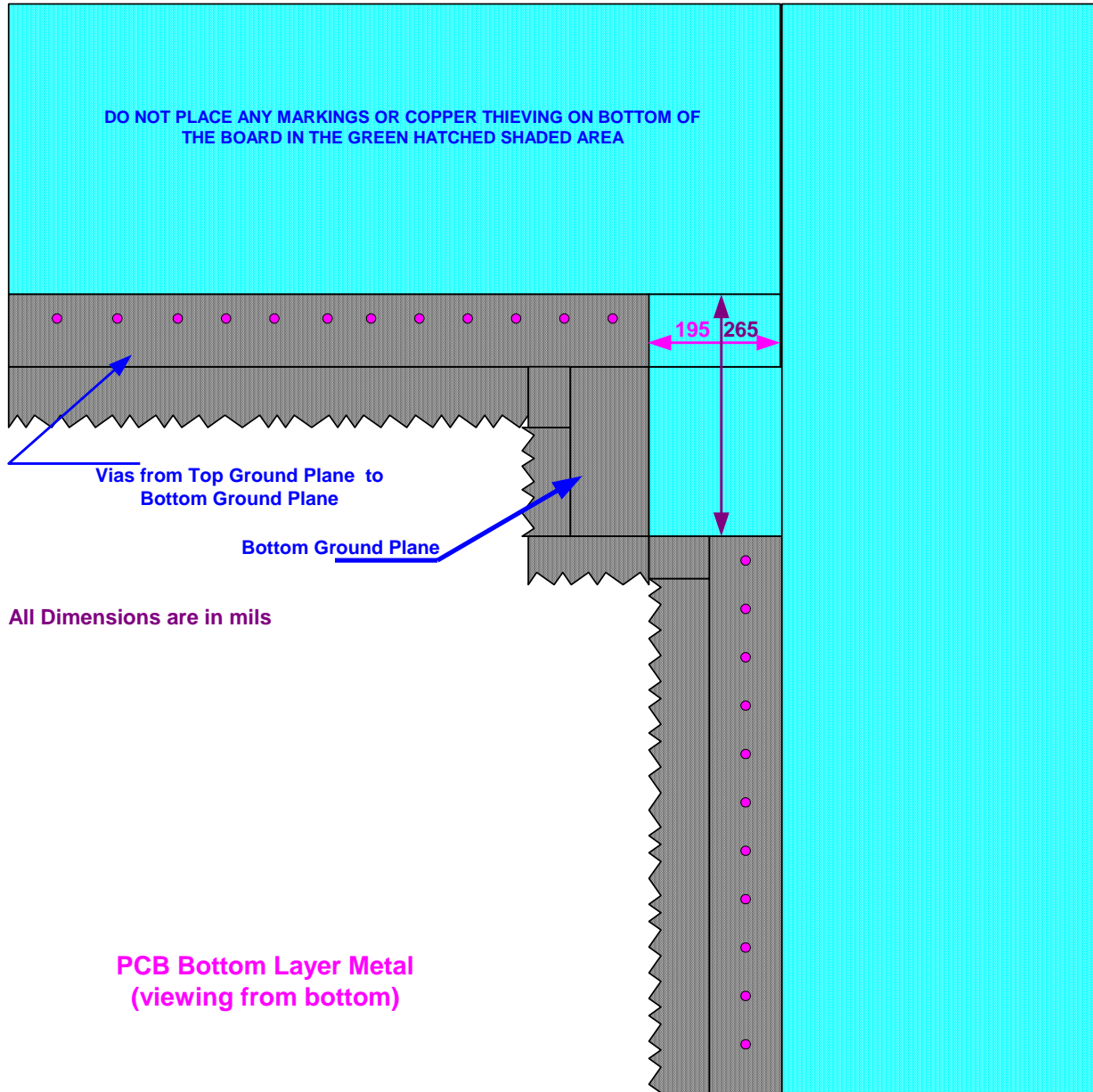


Figure 5. Dual Wiggle Antenna Design Details Bottom Side



Design Guidelines for the Antenna Choice and Implementation

The rules of thumb for the antenna choice, selection, and implementation:

- The performance of the antenna is dependent on its immediate surroundings, packaging, and proximity to the ground plane. The placement of antenna position should be identified early in the design process.
- The orientation of the device and the product usage model during the operation should be considered in mounting the antenna inside the device.
- If you are using an external antenna and if you are connecting the antenna with a coaxial cable assembly, the cable routing needs to be designed in such a manner as to keep it away from motors and battery packs.
- Large, continuous ground plane surfaces will provide better radiation performance than small surfaces.
- Product applications using keypads, LCD or other types of displays, battery packs and other metallic surfaces will affect and degrade the symmetry of the radiation pattern, reflections and multipath. Therefore the location of the antenna placement is critical. Place the antenna for best balance of the distribution of these objects.
- The effects of human body and the operator's hand should be examined and validated away during the product operation. By keeping the antenna away, the

specific absorption rate (SAR) will be reduced and pattern symmetry will be improved.

- It is better to eliminate connectors and interconnect transmission lines to avoid insertion losses on transmit power and receive sensitivity on the receiver.
- It is disadvantageous to use any form of EMI/RFI shield coatings on plastic housing to solve EMI problems without considering the effect of shielding on antenna placement and location.

Summary

This application note addresses the radio module design using WirelessUSB Radio IC and in particular, discusses one version of the PCB trace antenna layout details.

About the Author

Name: Rich Peng.
Title: Applications Engr Principal

Document History

Document Title: AN5033 - WirelessUSB™ Dual Antenna Design Layout Guidelines

Document Number: 001-15263

Revision	ECN	Orig. of Change	Submission Date	Description of Change
**	1776985	ZHC	11/27/2007	Old App Note Conversion Project - Applied new template with new copyright info, format style, new doc number, and added info into properties of file for Google search engine. Did not change any text within the app notes.
*A	3112460	ZHC	12/16/2010	Removed all instances of LS. Updated to new template.
*B	3354567	ZHC	05/26/2011	Added Software Version, Associated Part Family. Added Application Note Abstract.
*C	4504013	LIP	09/16/2014	Updated to new template. Completing Sunset Review.
*D	5797149	AESATMP8	07/04/2017	Updated logo and Copyright.
*E	5899934	CHYY	09/28/2017	No technical updates. Completing Sunset Review.

Worldwide Sales and Design Support

Cypress maintains a worldwide network of offices, solution centers, manufacturer's representatives, and distributors. To find the office closest to you, visit us at [Cypress Locations](#).

Products

ARM® Cortex® Microcontrollers	cypress.com/arm
Automotive	cypress.com/automotive
Clocks & Buffers	cypress.com/clocks
Interface	cypress.com/interface
Internet of Things	cypress.com/iot
Memory	cypress.com/memory
Microcontrollers	cypress.com/mcu
PSoC	cypress.com/psoc
Power Management ICs	cypress.com/pmic
Touch Sensing	cypress.com/touch
USB Controllers	cypress.com/usb
Wireless Connectivity	cypress.com/wireless

PSoC® Solutions

[PSoC 1](#) | [PSoC 3](#) | [PSoC 4](#) | [PSoC 5LP](#) | [PSoC 6](#)

Cypress Developer Community

[Forums](#) | [WICED IOT Forums](#) | [Projects](#) | [Videos](#) | [Blogs](#) | [Training](#) | [Components](#)

Technical Support

cypress.com/support

All other trademarks or registered trademarks referenced herein are the property of their respective owners.



Cypress Semiconductor
198 Champion Court
San Jose, CA 95134-1709

© Cypress Semiconductor Corporation, 2007-2017. This document is the property of Cypress Semiconductor Corporation and its subsidiaries, including Spansion LLC ("Cypress"). This document, including any software or firmware included or referenced in this document ("Software"), is owned by Cypress under the intellectual property laws and treaties of the United States and other countries worldwide. Cypress reserves all rights under such laws and treaties and does not, except as specifically stated in this paragraph, grant any license under its patents, copyrights, trademarks, or other intellectual property rights. If the Software is not accompanied by a license agreement and you do not otherwise have a written agreement with Cypress governing the use of the Software, then Cypress hereby grants you a personal, non-exclusive, nontransferable license (without the right to sublicense) (1) under its copyright rights in the Software (a) for Software provided in source code form, to modify and reproduce the Software solely for use with Cypress hardware products, only internally within your organization, and (b) to distribute the Software in binary code form externally to end users (either directly or indirectly through resellers and distributors), solely for use on Cypress hardware product units, and (2) under those claims of Cypress's patents that are infringed by the Software (as provided by Cypress, unmodified) to make, use, distribute, and import the Software solely for use with Cypress hardware products. Any other use, reproduction, modification, translation, or compilation of the Software is prohibited.

TO THE EXTENT PERMITTED BY APPLICABLE LAW, CYPRESS MAKES NO WARRANTY OF ANY KIND, EXPRESS OR IMPLIED, WITH REGARD TO THIS DOCUMENT OR ANY SOFTWARE OR ACCOMPANYING HARDWARE, INCLUDING, BUT NOT LIMITED TO, THE IMPLIED WARRANTIES OF MERCHANTABILITY AND FITNESS FOR A PARTICULAR PURPOSE. To the extent permitted by applicable law, Cypress reserves the right to make changes to this document without further notice. Cypress does not assume any liability arising out of the application or use of any product or circuit described in this document. Any information provided in this document, including any sample design information or programming code, is provided only for reference purposes. It is the responsibility of the user of this document to properly design, program, and test the functionality and safety of any application made of this information and any resulting product. Cypress products are not designed, intended, or authorized for use as critical components in systems designed or intended for the operation of weapons, weapons systems, nuclear installations, life-support devices or systems, other medical devices or systems (including resuscitation equipment and surgical implants), pollution control or hazardous substances management, or other uses where the failure of the device or system could cause personal injury, death, or property damage ("Unintended Uses"). A critical component is any component of a device or system whose failure to perform can be reasonably expected to cause the failure of the device or system, or to affect its safety or effectiveness. Cypress is not liable, in whole or in part, and you shall and hereby do release Cypress from any claim, damage, or other liability arising from or related to all Unintended Uses of Cypress products. You shall indemnify and hold Cypress harmless from and against all claims, costs, damages, and other liabilities, including claims for personal injury or death, arising from or related to any Unintended Uses of Cypress products.

Cypress, the Cypress logo, Spansion, the Spansion logo, and combinations thereof, WICED, PSoC, CapSense, EZ-USB, F-RAM, and Traveo are trademarks or registered trademarks of Cypress in the United States and other countries. For a more complete list of Cypress trademarks, visit cypress.com. Other names and brands may be claimed as property of their respective owners.