

BFP780

**Driver Amplifier for LTE Band-3
(1805 - 1880 MHz) Applications**

Application Note AN390

Revision: Rev. 1.0
2014-09-09

Application Note AN390**Revision History: 2014-09-09****Previous Revision:**

Page	Subjects (major changes since last revision)

Trademarks of Infineon Technologies AG

AURIX™, C166™, CanPAK™, CIPOS™, CIPURSE™, EconoPACK™, CoolMOS™, CoolSET™, CORECONTROL™, CROSSAVE™, DAVE™, DI-POL™, EasyPIM™, EconoBRIDGE™, EconoDUAL™, EconoPIM™, EconoPACK™, EiceDRIVER™, eupec™, FCOS™, HITFET™, HybridPACK™, I²RF™, ISOFACE™, IsoPACK™, MIPAQ™, ModSTACK™, my-d™, NovalithIC™, OptiMOS™, ORIGA™, POWERCODE™, PRIMARION™, PrimePACK™, PrimeSTACK™, PRO-SIL™, PROFET™, RASIC™, ReverSave™, SatRIC™, SIEGET™, SINDRION™, SIPMOS™, SmartLEWIS™, SOLID FLASH™, TEMPFET™, thinQ!™, TRENCHSTOP™, TriCore™.

Other Trademarks

Advance Design System™ (ADS) of Agilent Technologies, AMBA™, ARM™, MULTI-ICE™, KEIL™, PRIMECELL™, REALVIEW™, THUMB™, μ Vision™ of ARM Limited, UK. AUTOSAR™ is licensed by AUTOSAR development partnership. Bluetooth™ of Bluetooth SIG Inc. CAT-iq™ of DECT Forum. COLOSSUS™, FirstGPS™ of Trimble Navigation Ltd. EMV™ of EMVCo, LLC (Visa Holdings Inc.). EPCOS™ of Epcos AG. FLEXGO™ of Microsoft Corporation. FlexRay™ is licensed by FlexRay Consortium. HYPERTERMINAL™ of Hilgraeve Incorporated. IEC™ of Commission Electrotechnique Internationale. IrDA™ of Infrared Data Association Corporation. ISO™ of INTERNATIONAL ORGANIZATION FOR STANDARDIZATION. MATLAB™ of MathWorks, Inc. MAXIM™ of Maxim Integrated Products, Inc. MICROTEC™, NUCLEUS™ of Mentor Graphics Corporation. MIPI™ of MIPI Alliance, Inc. MIPS™ of MIPS Technologies, Inc., USA. muRata™ of MURATA MANUFACTURING CO., MICROWAVE OFFICE™ (MWO) of Applied Wave Research Inc., OmniVision™ of OmniVision Technologies, Inc. Openwave™ Openwave Systems Inc. RED HAT™ Red Hat, Inc. RFMD™ RF Micro Devices, Inc. SIRIUS™ of Sirius Satellite Radio Inc. SOLARIS™ of Sun Microsystems, Inc. SPANSION™ of Spansion LLC Ltd. Symbian™ of Symbian Software Limited. TAIYO YUDEN™ of Taiyo Yuden Co. TEAKLITE™ of CEVA, Inc. TEKTRONIX™ of Tektronix Inc. TOKO™ of TOKO KABUSHIKI KAISHA TA. UNIX™ of X/Open Company Limited. VERILOG™, PALLADIUM™ of Cadence Design Systems, Inc. VLYNQ™ of Texas Instruments Incorporated. VXWORKS™, WIND RIVER™ of WIND RIVER SYSTEMS, INC. ZETEX™ of Diodes Zetex Limited.

Last Trademarks Update 2011-11-11

Table of Content

1	Introduction	5
1.1	Overview of LTE-Advanced Small Cell Base Stations.....	5
1.2	Infineon Driver Amplifier Family	6
2	BFP780 Overview	8
2.1	Features	8
2.2	Key Applications of BFP780.....	8
3	BFP780 Driver Amplifier Application Circuit for LTE Band-3 Applications (1805 – 1880 MHz) .	9
3.1	Performance Overview.....	9
3.2	Schematics and Bill-of-Materials.....	10
4	Measurement Graphs	11
5	Evaluation Board and Layout Information	17
6	Authors.....	18
7	Remark	18

List of Figures

Figure 1	A RF Front-End Block Diagram Example of WiFi Enabled LTE Small Cell	6
Figure 2	BFP780 in SOT343	8
Figure 3	Schematics of the BFP780 Application Circuit for LTE Band-3 (1805 - 1880 MHz)	10
Figure 4	Wideband Insertion Power Gain of the BFP780 for Band-3 Applications	11
Figure 5	Narrowband Insertion Power Gain of the BFP780 for Band-3 Applications	11
Figure 6	Input Matching of the BFP780 for Band-3 Applications	12
Figure 7	Input Matching (Smith Chart) of the BFP780 for Band-3 Applications	12
Figure 8	Output Matching of the BFP780 for Band-3 Applications	13
Figure 9	Output Matching (Smith Chart) of the BFP780 for Band-3 Applications	13
Figure 10	Reverse Isolation of the BFP780 for Band-3 Applications	14
Figure 11	Output 1dB Compression Point of the BFP780 for Band-3 Applications	14
Figure 12	Carrier to IM3 Ratio of the BFP780 for Band-3 Applications	15
Figure 13	DC Current Consumption versus Output Power of the BFP780 for Band-3 Applications	15
Figure 14	Stability Mu1, Mu2-factors of the BFP780 for Band-3 Applications	16
Figure 15	Photo of Evaluation Board of the BFP780 Application Circuit for LTE Band-3 Application	17
Figure 16	PCB Layer Stack	17

List of Tables

Table 1	Small Cell Family Classification	5
Table 2	Summary of Measurement Results	9
Table 3	Bill-of-Materials	10

1 Introduction

1.1 Overview of LTE-Advanced Small Cell Base Stations

Mobile communication technologies have seen tremendous growth in recent years. In order to satisfy the rising demand of the next level of wireless data capacity, small cells, which are fully featured, short range mobile phone basestations, are gathering more and more focus to increase wireless network capacity and reduce network costs.

The main capacity enhancement of small cells is the result from aggressive frequency re-use. Meanwhile, small cells are placed much closer to the mobile device users, especially for the indoor applications. Due to the small cells installed indoor, the heavy signal losses across the walls of buildings between indoor user and outdoor LTE macrocell network can be avoided. Data rates increase with the improved signal strength and signal quality. The uplink power from the mobile devices also decreases at the same time, which extends the mobile device battery lifetime. Compared to leased lines for macrocell network backhaul, the public internet can be served as small cells backhaul to decrease the backhaul costs. Meanwhile, small cells are much more flexible to be installed and more easily deployed than a typical macro base station, providing cost savings for operators.

Small cell family comprises femtocells, picocells, and microcells, depending on the variety of capacity and power ranges. **Table 1** lists the small cell family classification.

Table 1 Small Cell Family Classification

Small Cell Category	Output Average Power (dBm)	Maximum Cell Radius (m)	Wireless Standard
Femtocell	10–13	10	3G/4G/WiFi
Picocell	24–30	200	3G/4G
Microcell	30–37	2000	2G/3G/4G

The small cell can be divided into two distinct function blocks: the RF front-end and the baseband processor. The block diagram is presented in **Figure 1**. The RF front-end converts the baseband data into a RF radiated signal in the transmit circuit, and vice versa in the receive chain.

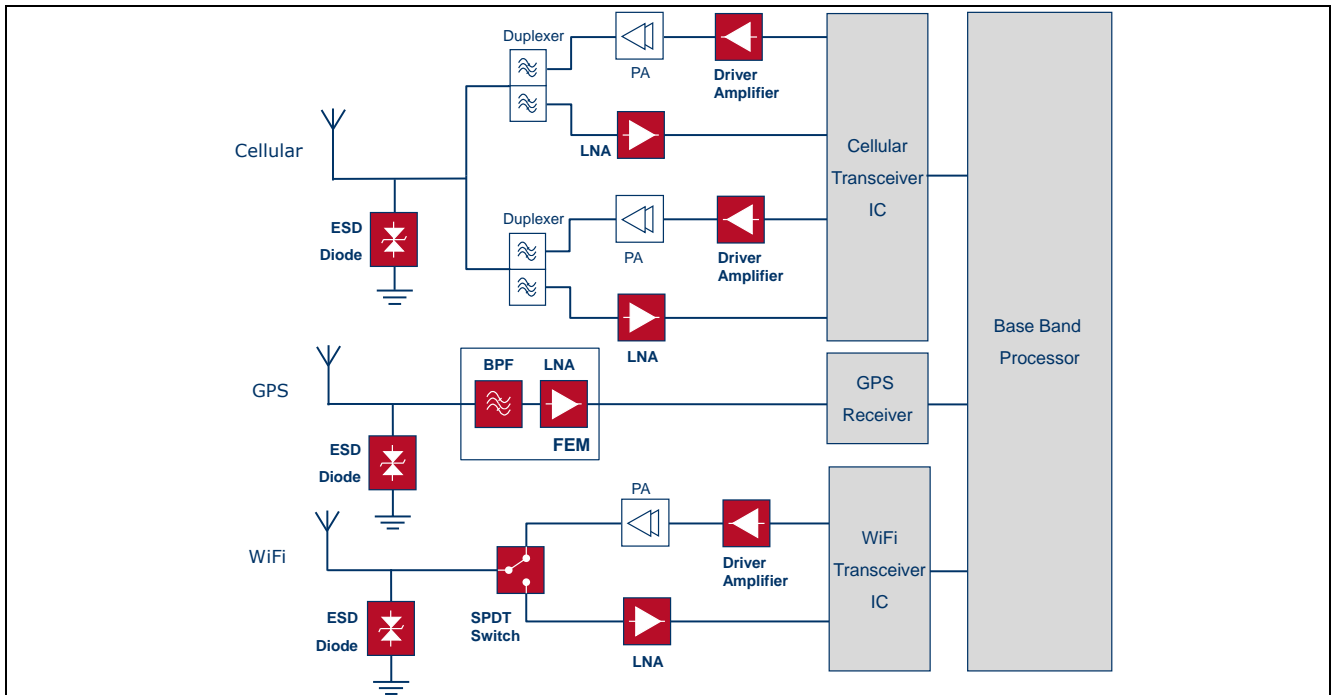


Figure 1 A RF Front-End Block Diagram Example of WiFi Enabled LTE Small Cell

Infineon Technologies is the leading company with a broad portfolio of RF product solutions including driver amplifiers, low noise amplifiers (LNAs), switches, ESD protection diodes and GNSS module for mobile phone as well as for small cell base transceiver station (BTS) applications.

1.2 Infineon Driver Amplifier Family

The driver amplifier, also known as gain block, is an important functional block in RF transceiver systems requiring high output power. The Power Amplifier (PA), the final stage of a signal amplifier chain, requires a certain input power level to operate in the linear mode, which usually cannot be delivered by the transceiver IC directly. In these cases, external one or two stage driver amplifiers are required. Driver amplifiers are generally operated in linear class-A mode to enable high linearity and high gain, thereby keeping spurious signals generated by the PA low, by reducing intermodulation products. Class-A amplifiers are also the right choice for broadband operation at low power levels.

BFQ790 and BFP780 are described as general purpose medium power transistor in Infineon's Silicon Germanium (SiGe) product portfolio for wireless infrastructure applications. These include mobile basestation transceivers, cellular repeaters, ISM band amplifiers and

test equipment. Their operating frequency range can be as high as 3.6 GHz, and the application circuit can be optimized for specific frequency bands with external matching components.

The BFQ790 is a single stage driver amplifier with very high linearity. Its output 1dB compression point is 27 dBm. The device is housed in the halogen-free industry standard package SOT89. The high thermal conductivity of silicon substrate and the low thermal resistance of the package add up to a thermal resistance of only 35 K/W, which leads to moderate junction temperatures even at high dissipated power values. The proper die attach with good thermal contact is 100% tested, so that there is minimum variation of thermal properties. The device is based on Infineon's reliable and cost effective NPN SiGe technology running in high volume. The collector design allows safe operation with 5 V supply voltage. The BFQ790 is very rugged. A special collector design prevents from thermal runaway respectively 2nd breakdown, which leads to a high ruggedness against mismatch at the output. The special design of the emitter/base diode makes it robust and yields to a high maximum RF input power capability.

The BFP780 is a single stage driver amplifier with high linearity and high power gain. Its output 1dB compression point is above 22 dBm. The chip is housed in a halogen-free industry standard package SOT343. The proper die attach with good thermal contact is 100% tested and verified. Same as BFQ790, the device is based on Infineon's reliable and cost effective NPN SiGe technology running in high volume. The collector design allows safe operation with 5 V supply voltage. For further information about BFP780 please refer its datasheet and application.

In this application note, the driver application circuit of BFP780 for LTE Band-3 (1805 - 1880 MHz) and its measurement results are presented. The BFP780 driver provides 18.0 dB gain in the frequency range of 1805 to 1880 MHz. The output 1dB compression point (OP1dB) is 22.2 dBm measured at 1850 MHz. Besides, in two-tone test with tone spacing of 1 MHz, the output third order intercept point (OIP3) reaches 35 dBm and the carrier to the 3rd IM product ratio (CIMR3) is larger than 47 dBc when the signal power per tone reaches 12 dBm.

2 BFP780 Overview

2.1 Features

- High 3rd order intercept point OIP3 of 35 dBm @ 2700 MHz, 5 V, 65 mA (measured in testfixture, 37 dBm in application)
- High compression point OP1dB of 22.5 dBm @ 2700 MHz, 5 V, 80 mA, corresponding to 43% collector efficiency
- High maximum power gain $G_{max}=18.5$ dB @ 2700 MHz, 5 V, 80 mA
- Low noise figure of 0.85 dB @ 900 MHz, 5 V, 20 mA
- Single stage, intended for external matching
- Very rugged: Worst case output mismatch VSWR 10:1
- High maximum RF input power PR_{Finmax} of 20 dBm
- Safe operation with single 5 V supply
- 100% test of proper die attach for reproducible thermal contact
- 100% DC and RF tested
- Easy to use large signal compact (VBIC) model available
- Cost effective NPN SiGe technology running in very high volume
- Easy to use Pb-free (RoHS compliant) and halogen-free industry standard package SOT343, low R_{thJS} of 35 K/W

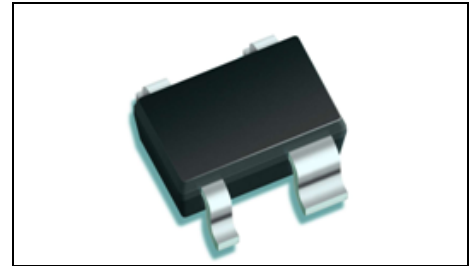


Figure 2 BFP780 in SOT343



2.2 Key Applications of BFP780

As

- High linearity driver or pre-driver in the transmit chain
- 2nd or 3rd stage LNA in the receive chain
- IF or LO buffer amplifier

In

- Commercial / industrial wireless infrastructure / basestations
- Repeaters
- Automated test equipment

For

- Cellular, PCS, DCS, UMTS, LTE, CDMA, WCDMA, GSM, GPRS
- WLAN, WiMAX, WLL and MMDS
- ISM, AMR
- UHF television, CATV, DBS

Attention: ESD (Electrostatic discharge) sensitive device, observe handling precautions

3 BFP780 Driver Amplifier Application Circuit for LTE Band-3 Applications (1805 – 1880 MHz)

3.1 Performance Overview

Device: BFP780

Application: Driver Amplifier for LTE Band-3 (1805 - 1880 MHz) Applications

PCB Marking: M140116-SOT343

Table 2 Summary of Measurement Results

Parameter	Symbol	Value	Unit	Comment/Test Condition
DC Voltage	V_{CC}	5.0	V	
Quiescent DC Current	I_{CQ}	90	mA	
Frequency Range	F_{req}	1805 – 1880	MHz	
Gain	G	18.0	dB	$V_{CC}= 5.0$ V, $I_{CC}= 90$ mA, the PCB and SMA losses are not subtracted.
Input Return Loss	RLin	16	dB	
Output Return Loss	RLout	10	dB	
Reverse Isolation	IRev	24	dB	
Output P1dB	OP1dB	22	dBm	Measured at 1.85 GHz
Output IP3	OIP3	34	dBm	Power @ output: 10 dBm per tone $f_1=1850$ MHz, $f_2=1851$ MHz
Stability	μ_1, μ_2	> 1	--	Measured up to 6 GHz

*Note: Please refer to **Chapter 4** for corresponding graphs*

3.2 Schematics and Bill-of-Materials

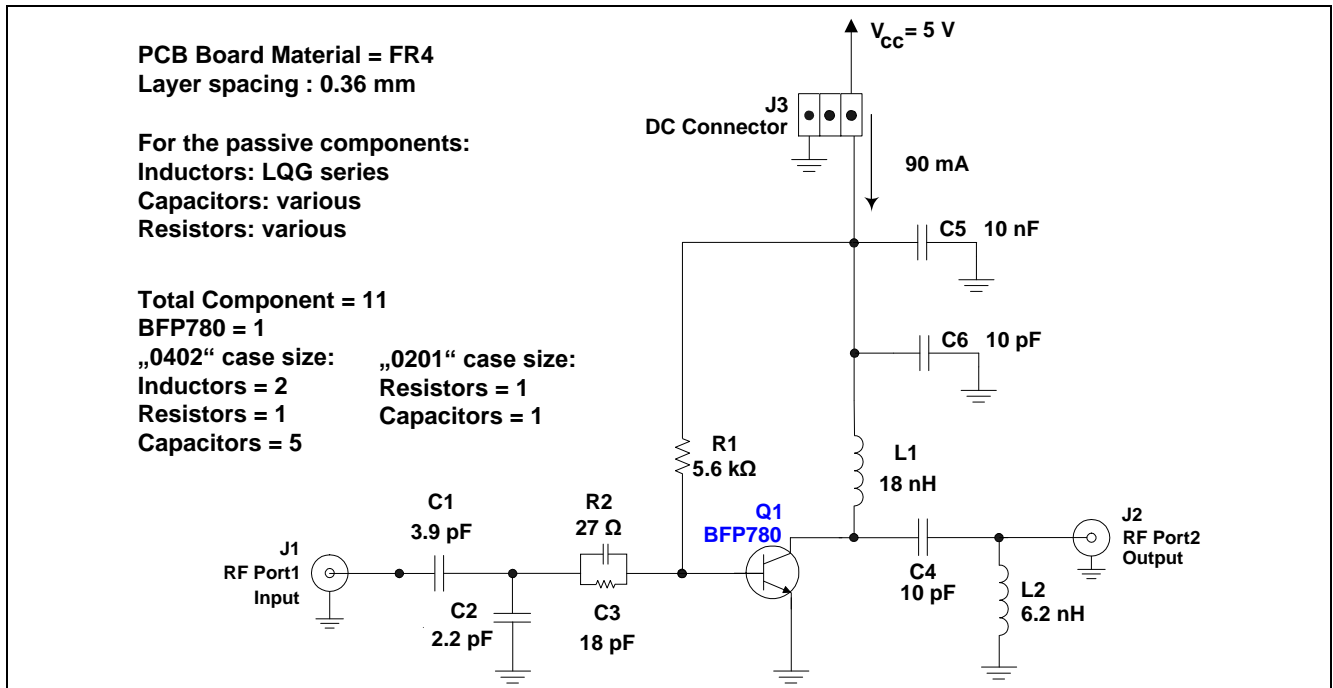


Figure 3 Schematics of the BFP780 Application Circuit for LTE Band-3 (1805 - 1880 MHz)

Table 3 Bill-of-Materials

Symbol	Value	Unit	Size	Manufacturer	Comment
Q1	BFP780	SOT343		Infineon	SiGe driver transistor
C1	3.9	pF	0402	Murata GRM	Input matching and DC blocking
C2	2.2	pF	0402	Murata GRM	Input matching
C3	18	pF	0201	Murata GRM	Stability
C4	10	pF	0402	Murata GRM	Output matching and DC blocking
C5	10	nF	0402	Murata GRM	RF bypass
C6	10	pF	0402	Murata GRM	RF bypass
L1	18	nH	0402	Murata LQG series	RF choke and output matching
L2	6.2	nH	0402	Murata LQG series	Output matching
R1	5.6	kΩ	0402	Murata Various	DC biasing
R2	27	Ω	0201	Murata Various	Stability

4 Measurement Graphs

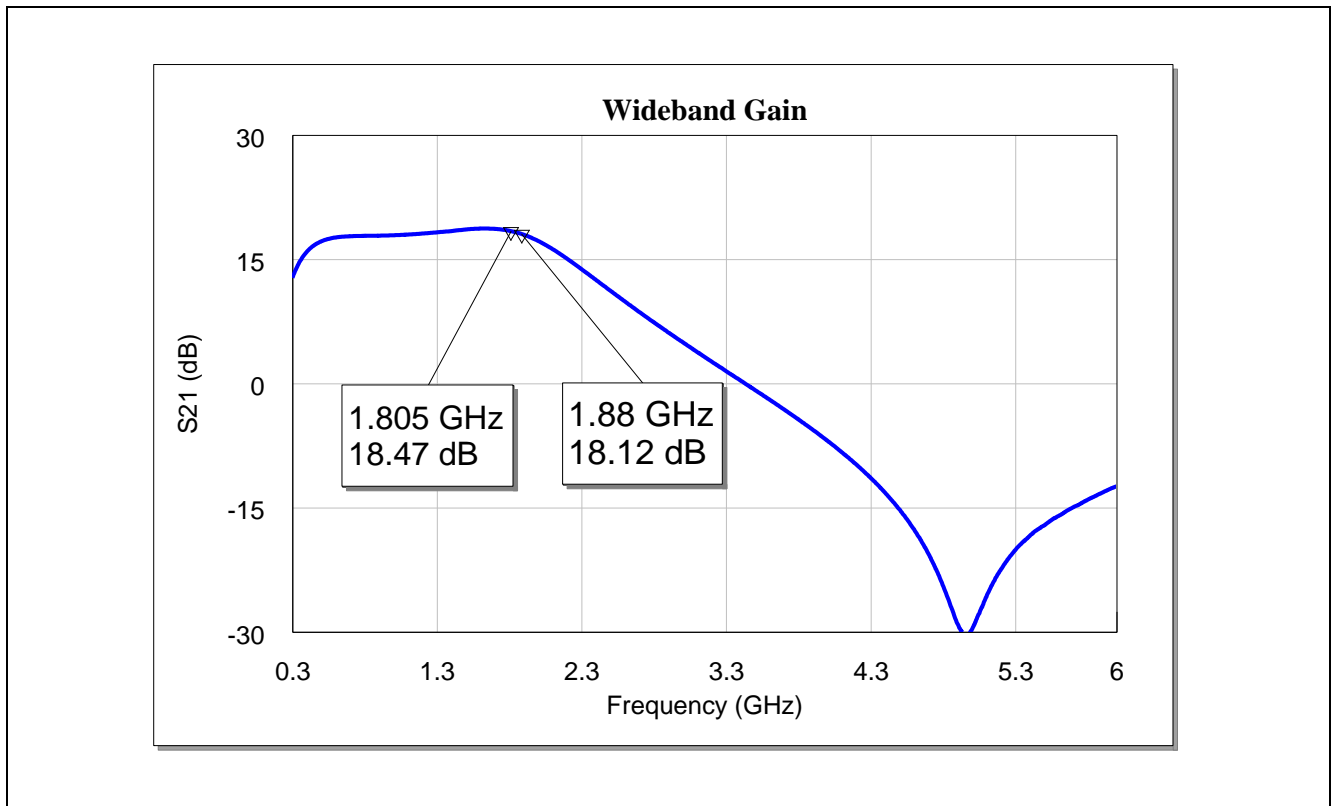


Figure 4 Wideband Insertion Power Gain of the BFP780 for Band-3 Applications

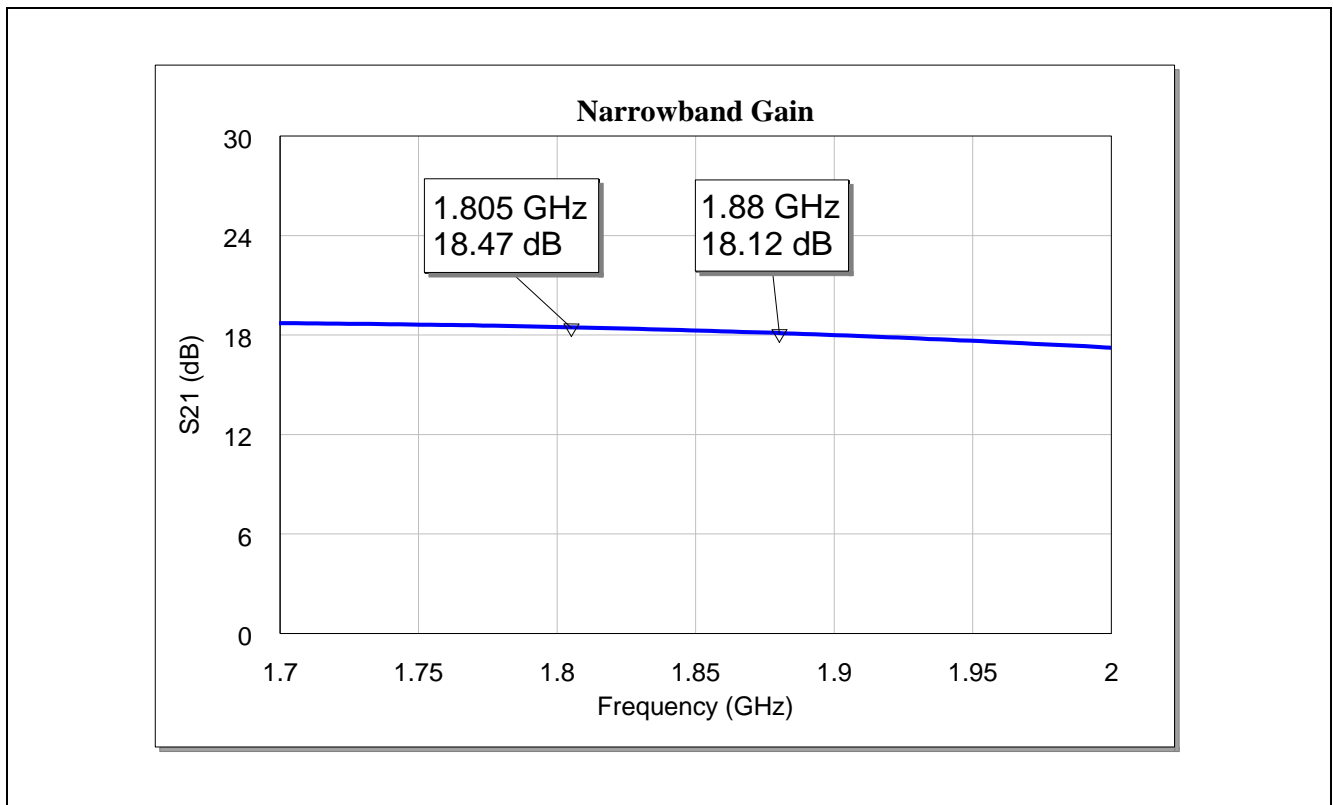


Figure 5 Narrowband Insertion Power Gain of the BFP780 for Band-3 Applications

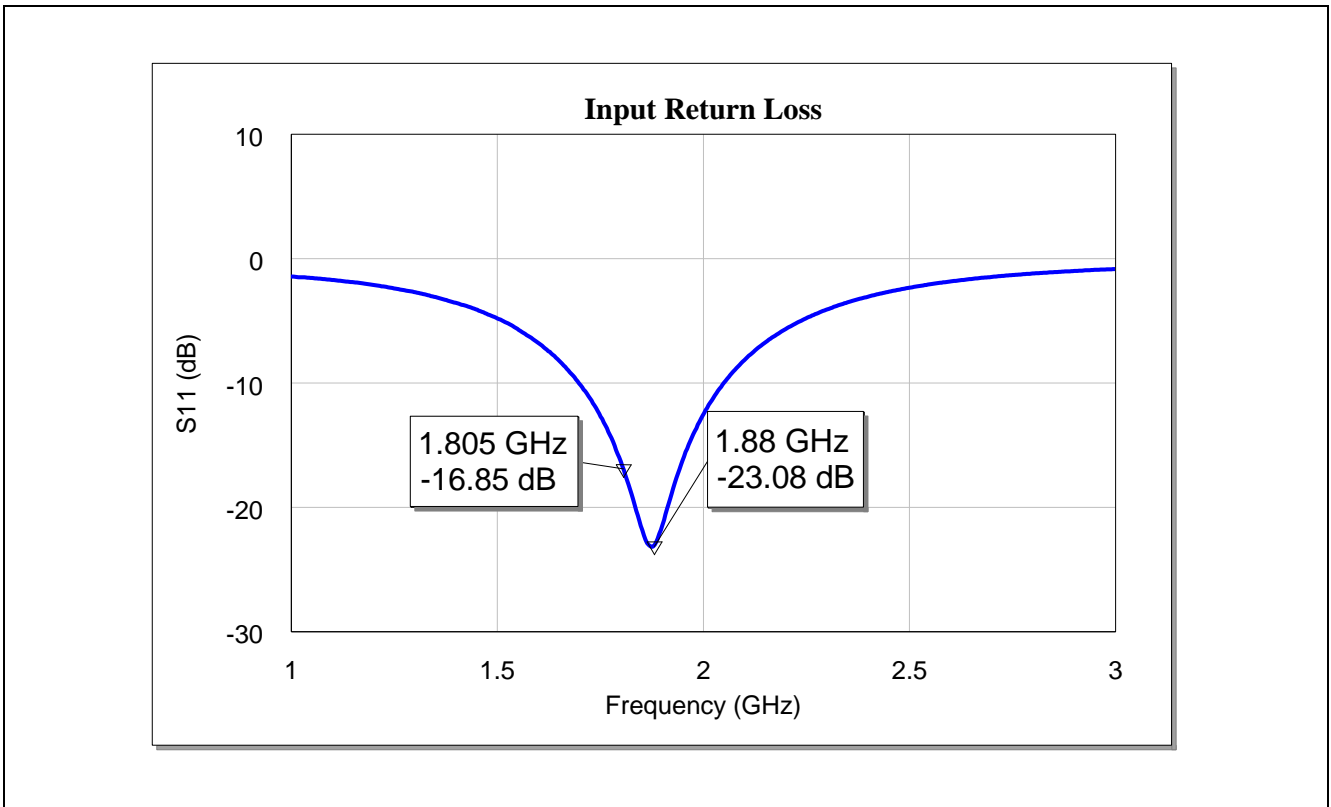


Figure 6 Input Matching of the BFP780 for Band-3 Applications

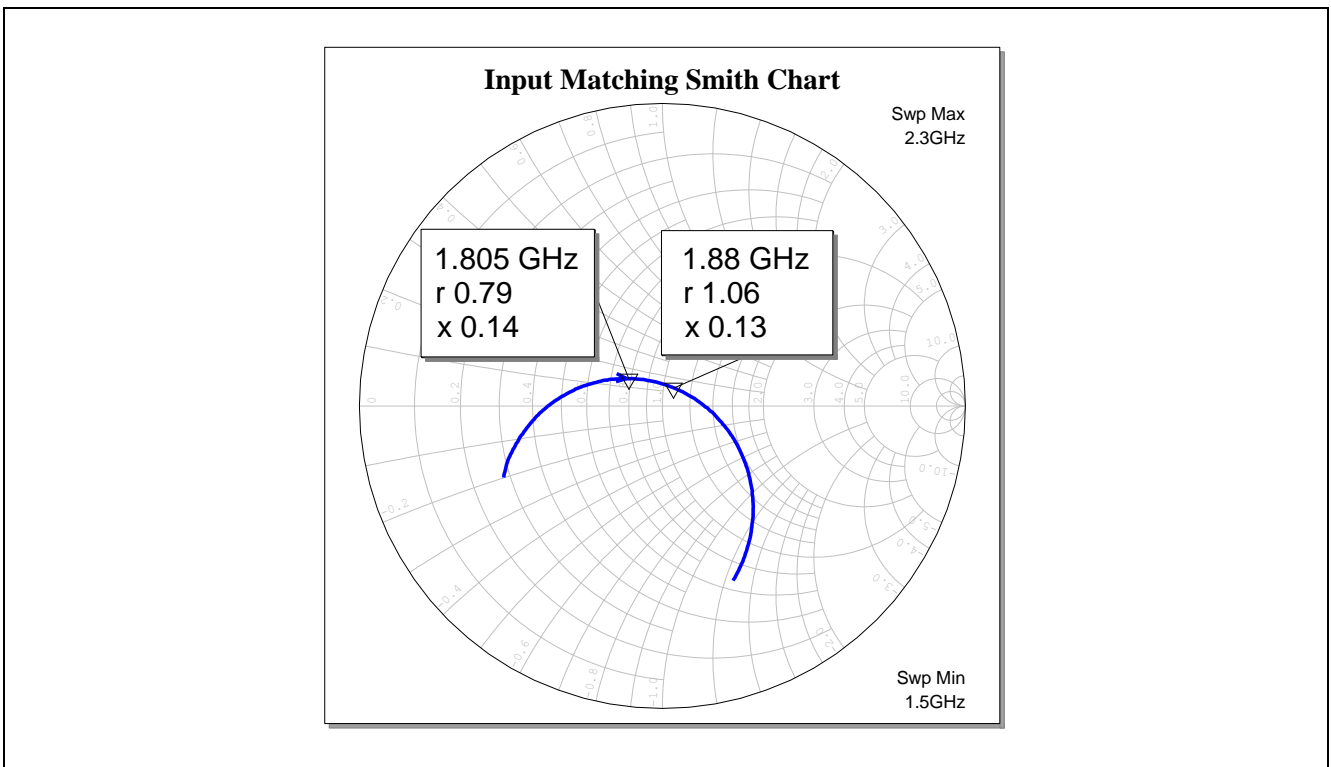


Figure 7 Input Matching (Smith Chart) of the BFP780 for Band-3 Applications

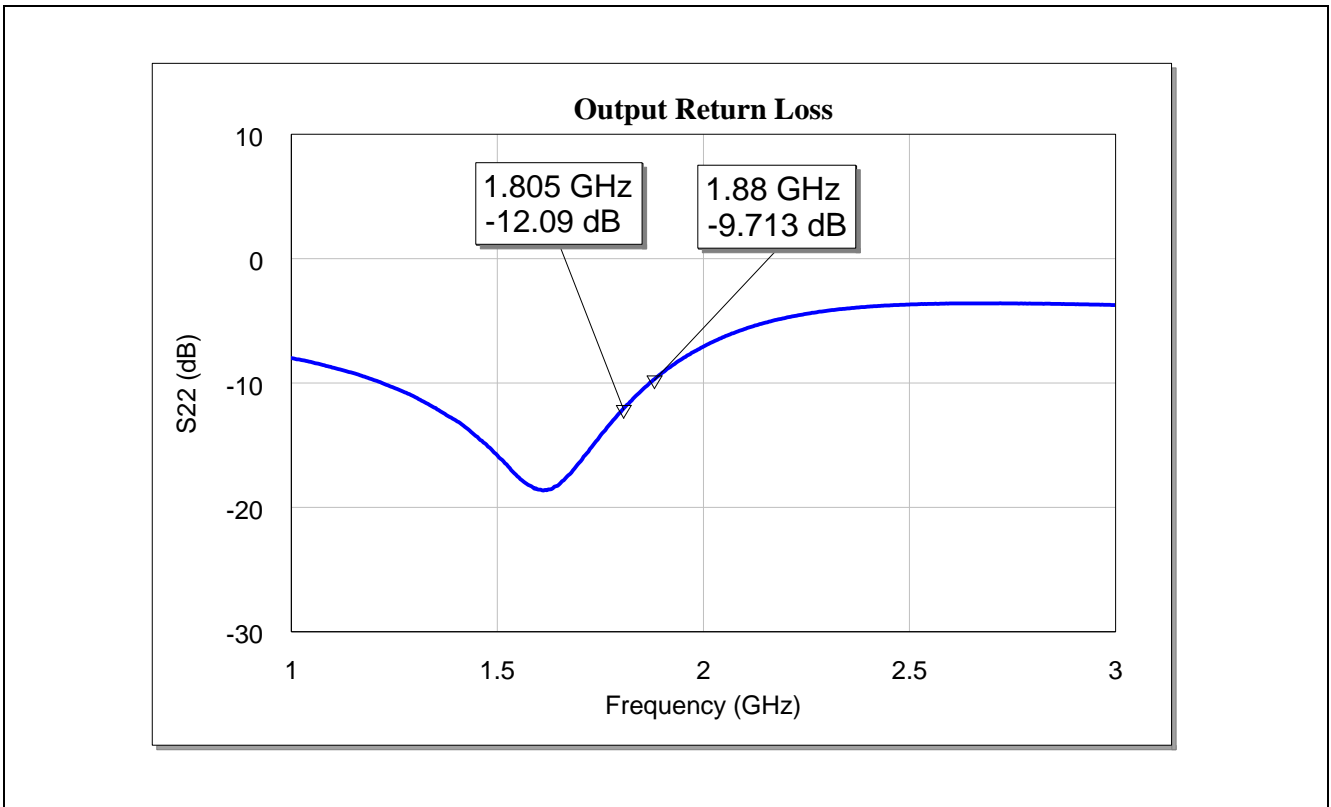


Figure 8 Output Matching of the BFP780 for Band-3 Applications

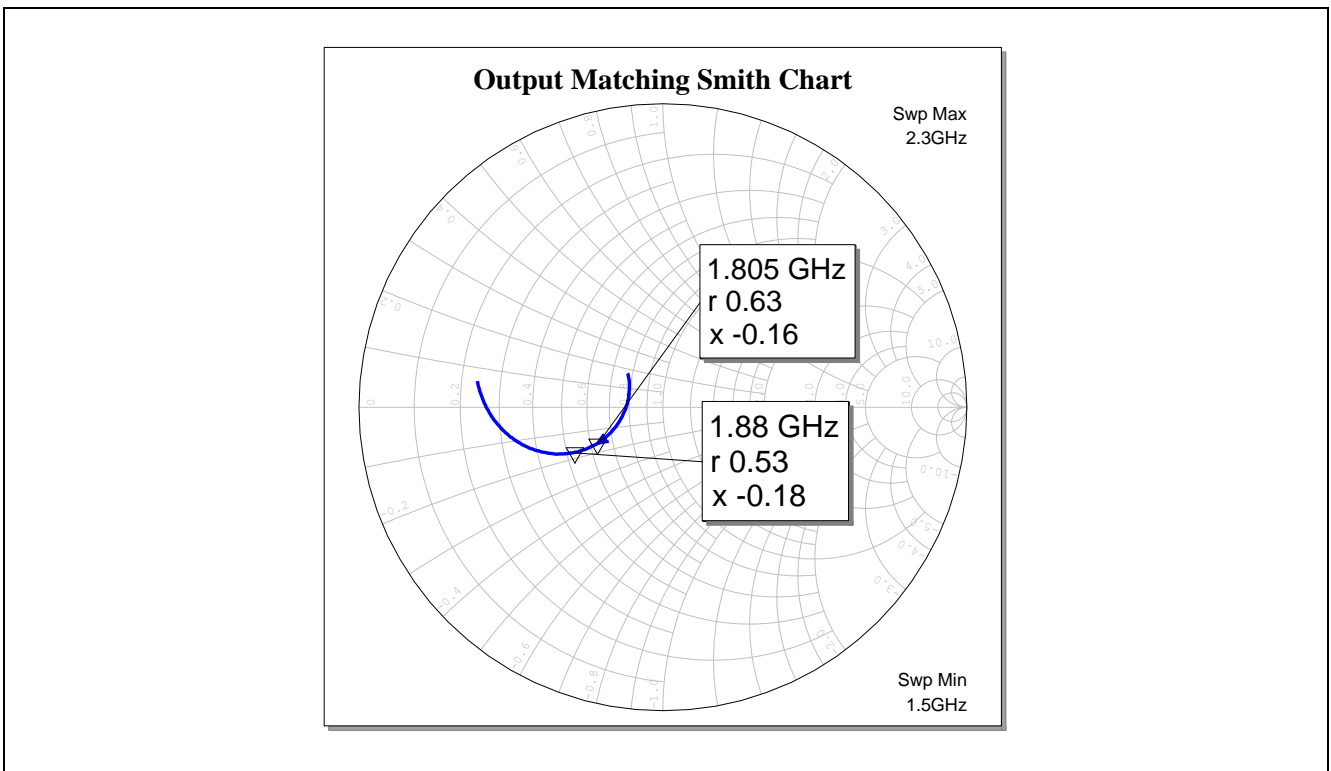


Figure 9 Output Matching (Smith Chart) of the BFP780 for Band-3 Applications

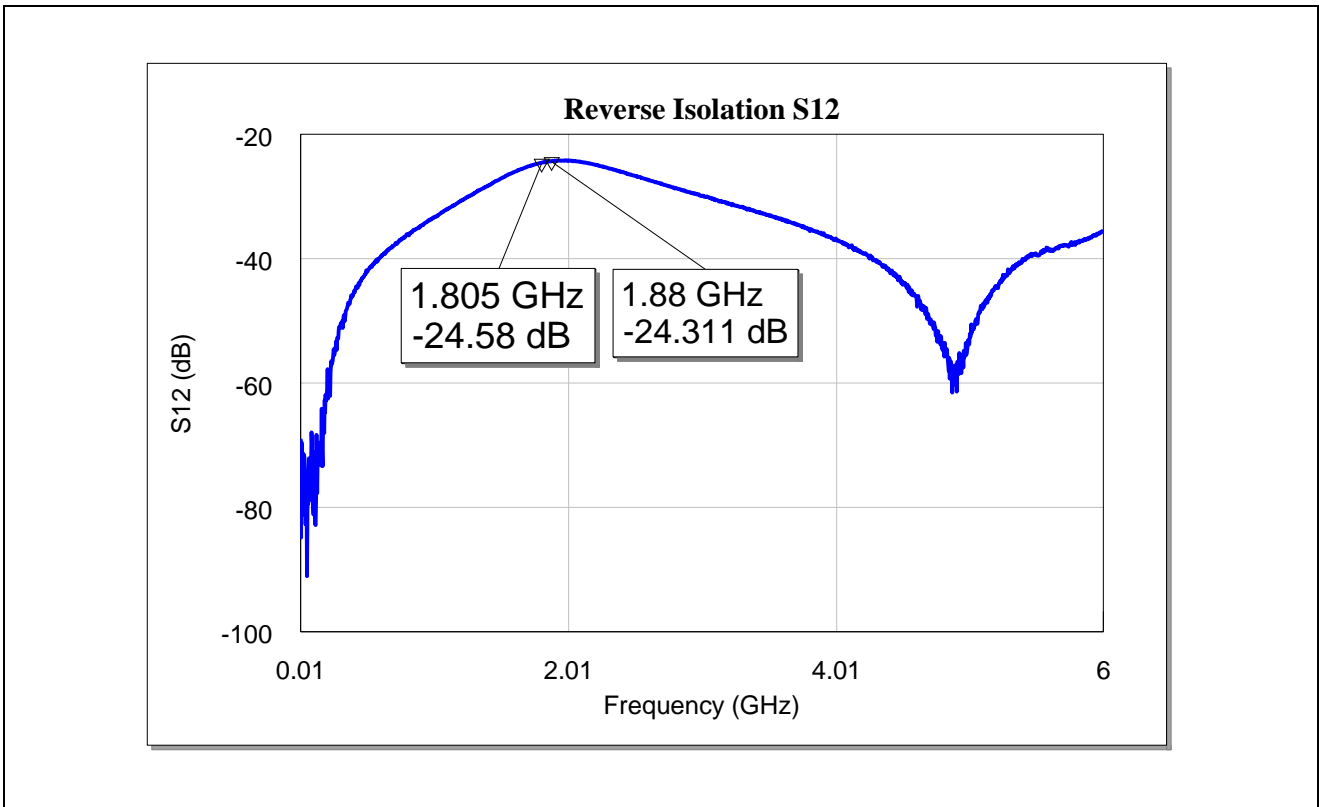


Figure 10 Reverse Isolation of the BFP780 for Band-3 Applications

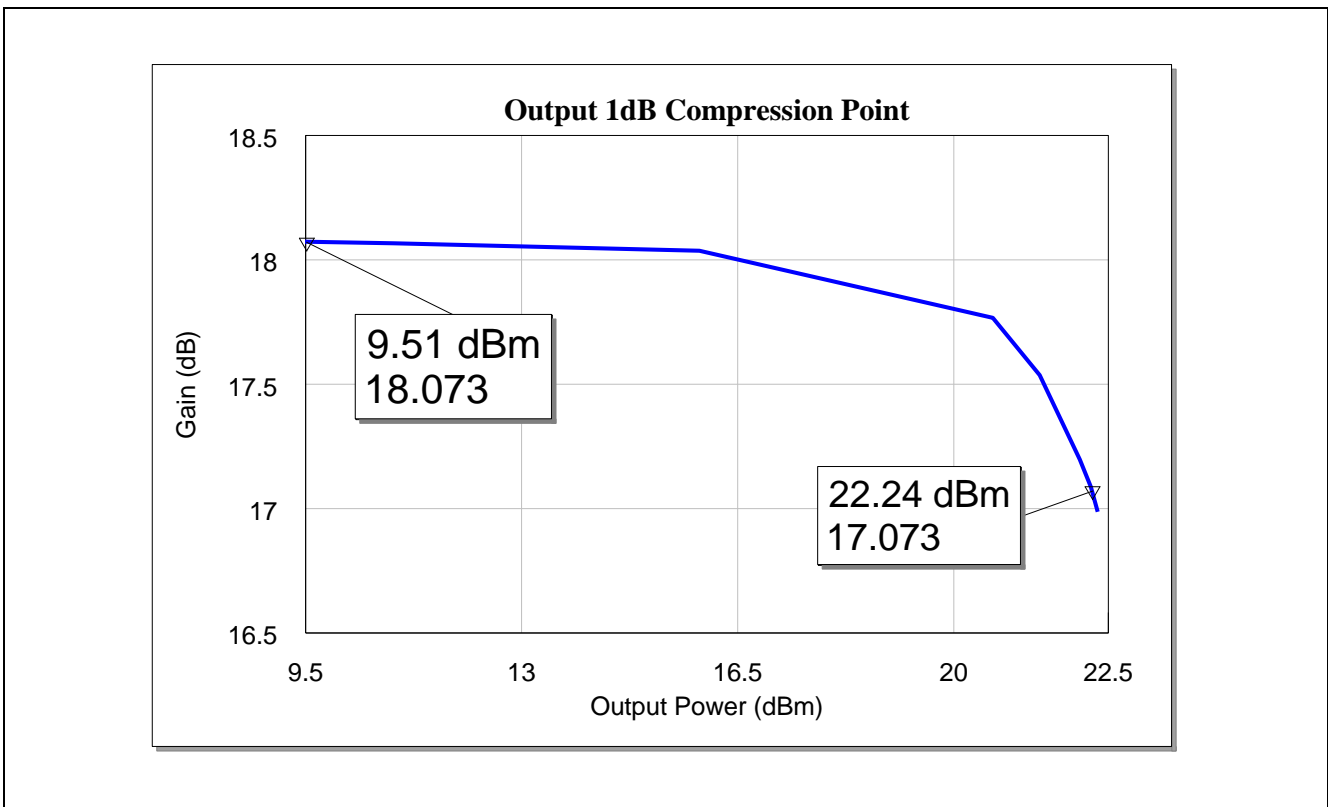


Figure 11 Output 1dB Compression Point of the BFP780 for Band-3 Applications

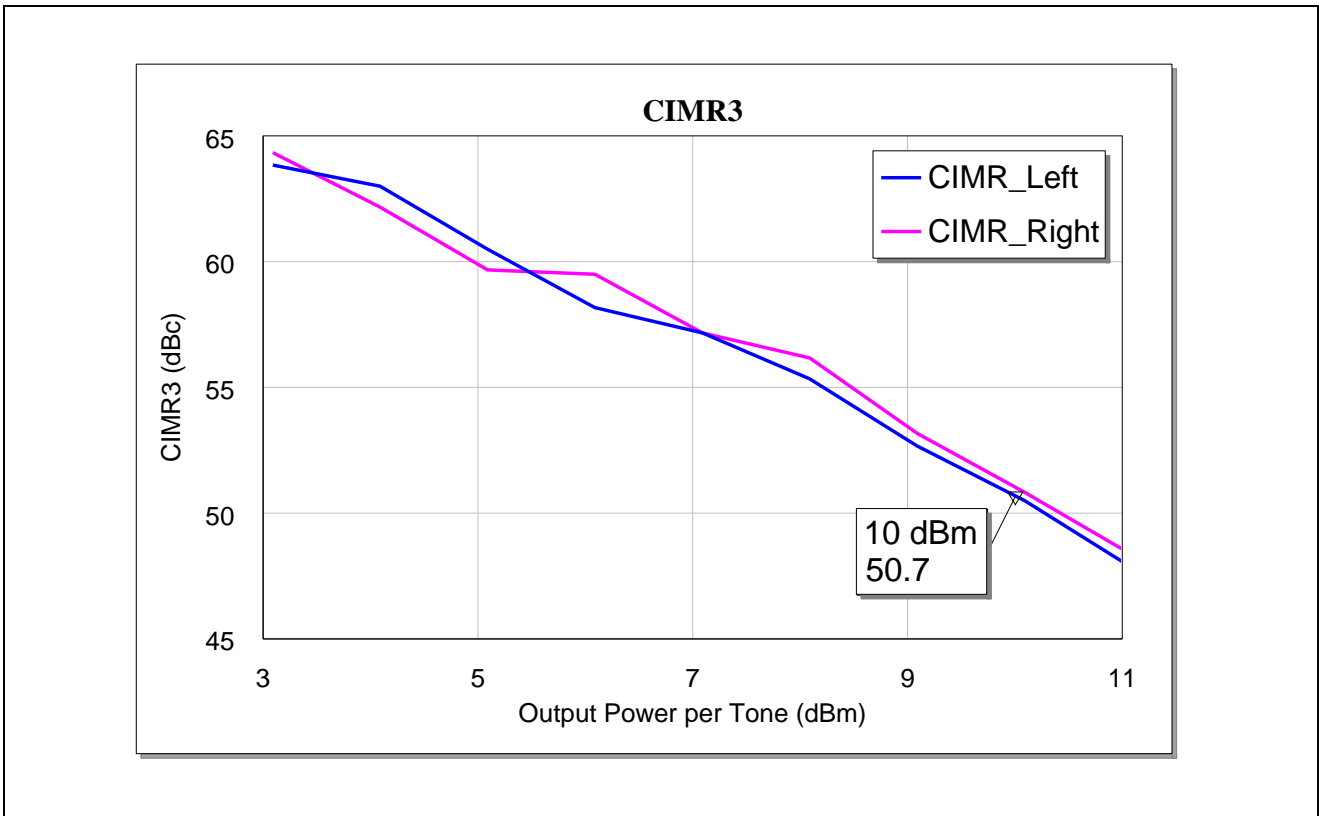


Figure 12 Carrier to IM3 Ratio of the BFP780 for Band-3 Applications

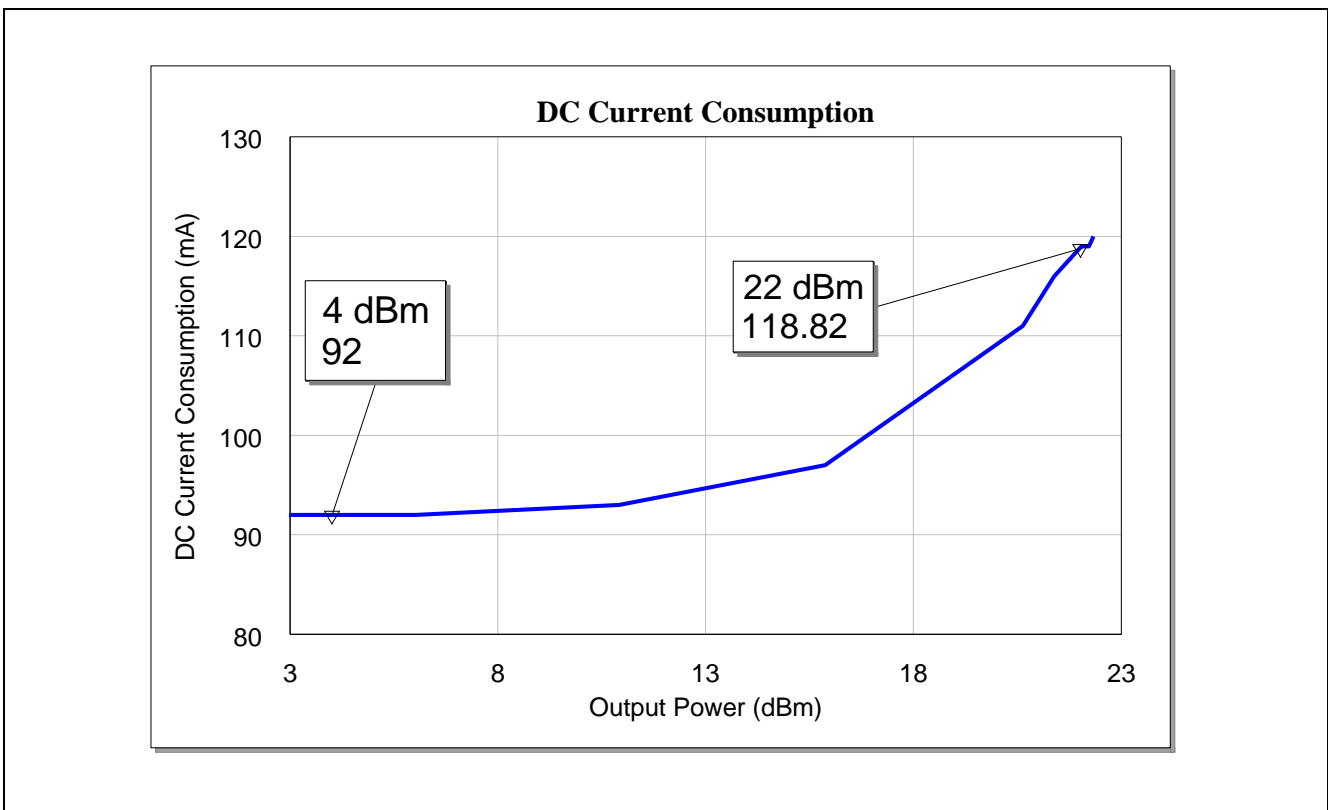


Figure 13 DC Current Consumption versus Output Power of the BFP780 for Band-3 Applications

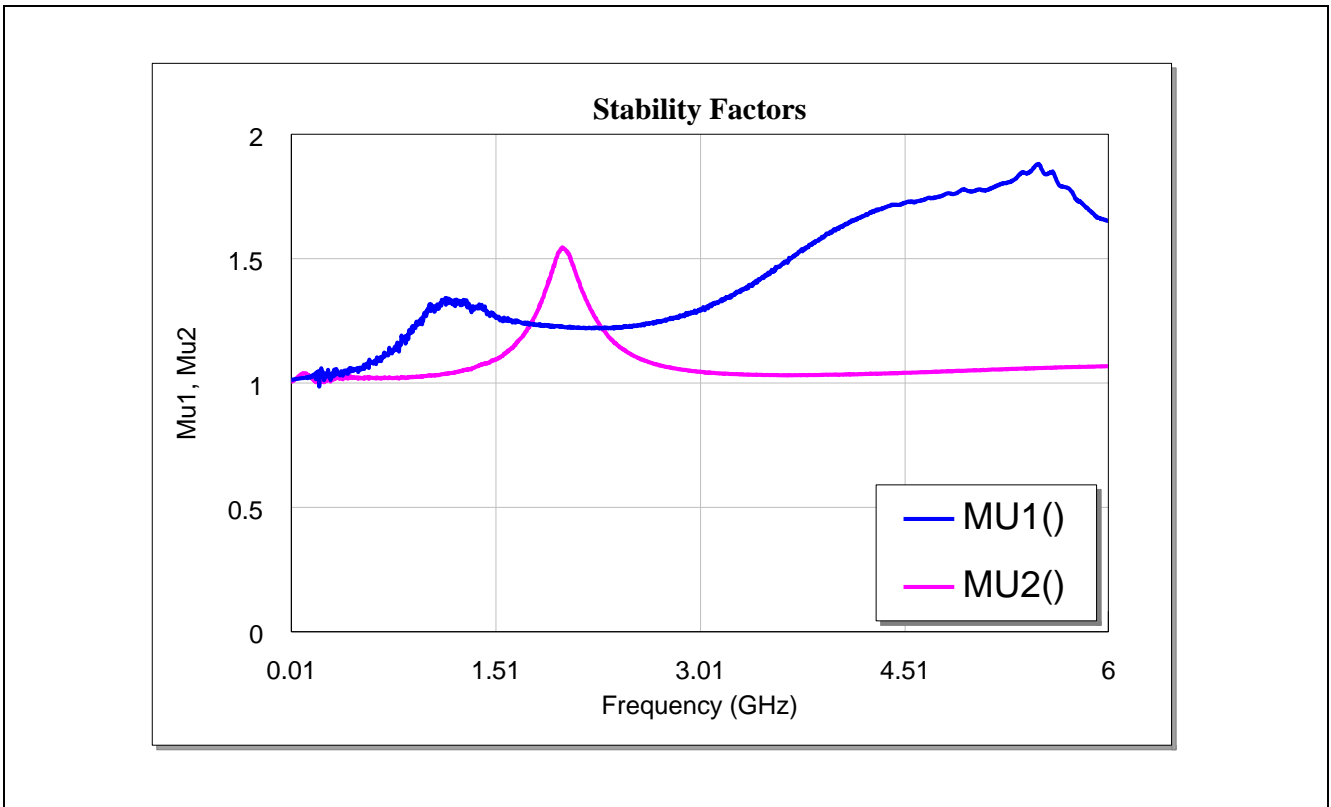


Figure 14 Stability Mu1, Mu2-factors of the BFP780 for Band-3 Applications

5 Evaluation Board and Layout Information

In this application note, the following PCB is used:

PCB Marking: M140116-SOT343

PCB material: FR4

ϵ_r of PCB material: 4.6

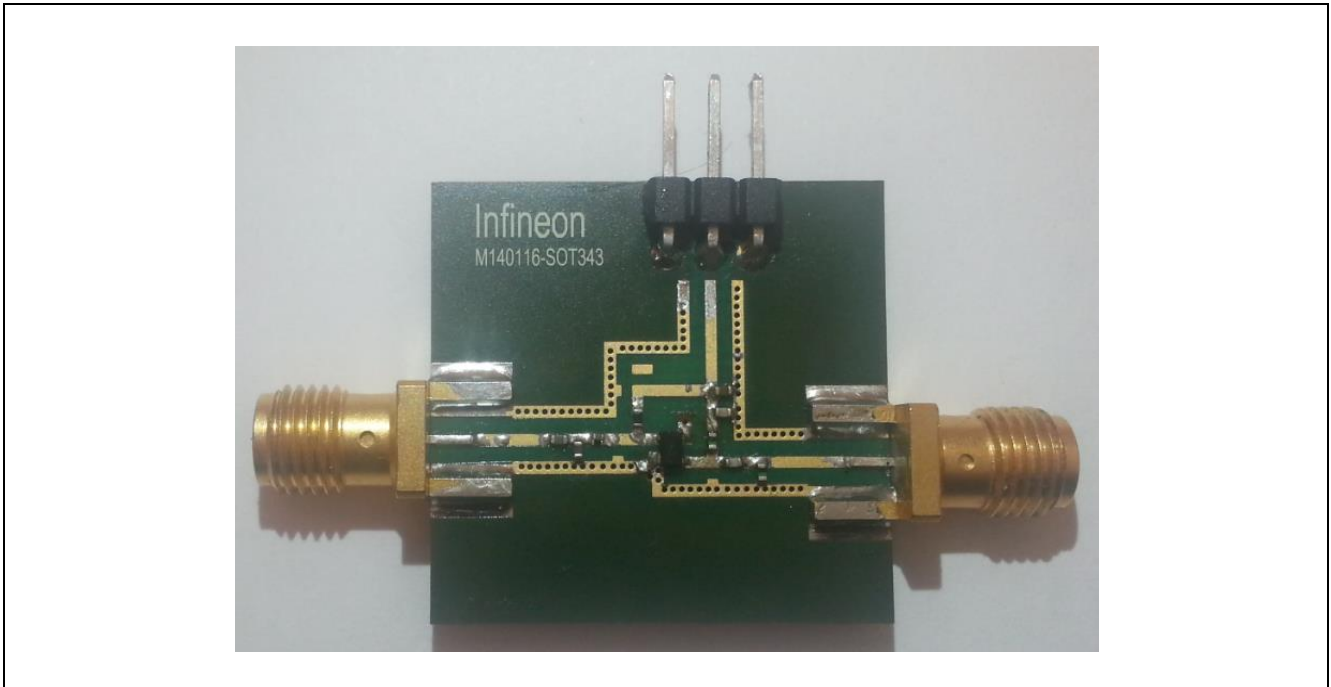


Figure 15 Photo of Evaluation Board of the BFP780 Application Circuit for LTE Band-3 Application

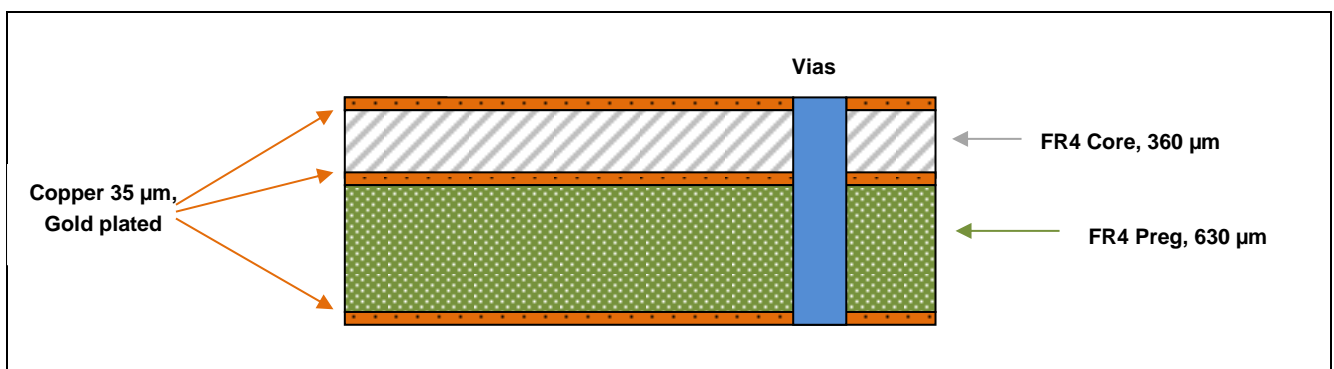


Figure 16 PCB Layer Stack

6 Authors

Xi Chen, Student of Business Unit “RF and Protection Devices”

Dr. Jie Fang, RF Application Engineer of Business Unit “RF and Protection Devices”

7 Remark

The graphs are generated with the simulation software AWR Microwave Office®.

www.infineon.com