

Downloading Firmware to CYW20733 Modules Using BlueTool™

Associated Part Family: CYW20733

This document describes the step-by-step process of downloading the firmware to BCM20733 modules using BlueTool™ software.

1 About This Document

1.1 Cypress Part Numbering Scheme

Cypress is converting the acquired IoT part numbers from Broadcom to the Cypress part numbering scheme. Due to this conversion, there is no change in form, fit, or function as a result of offering the device with Cypress part number marking. The table provides Cypress ordering part number that matches an existing IoT part number.

Table 1. Mapping Table for Part Number between Broadcom and Cypress

Broadcom Part Number	Cypress Part Number
BCM20733	CYW20733

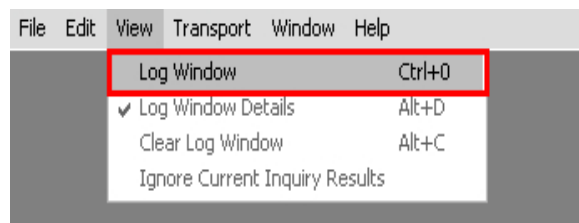
1.2 Acronyms and Abbreviations

In most cases, acronyms and abbreviations are defined on first use. For a more complete list of acronyms and other terms used in Cypress documents, go to: <http://www.cypress.com/glossary>.

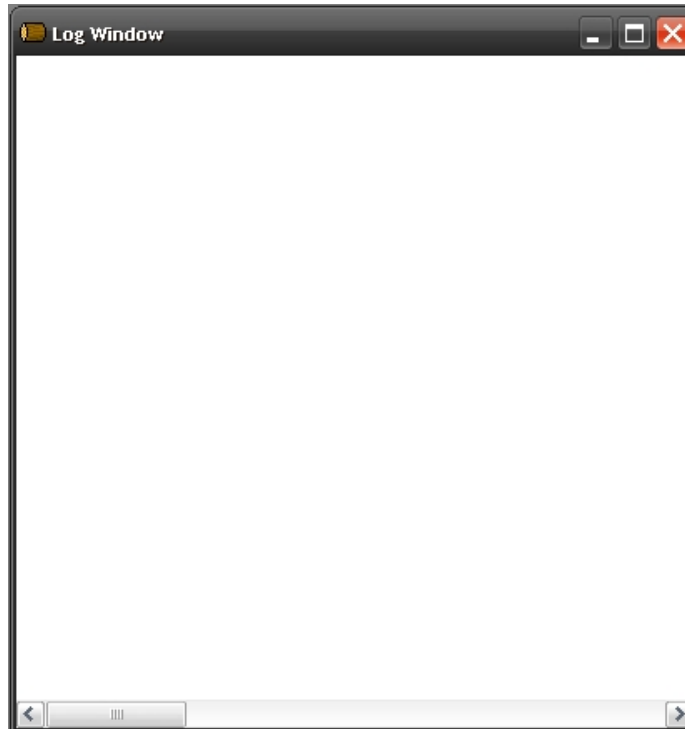
2 Using BlueTool to Download Firmware

2.1 Connecting the CYW20733 Reference Board

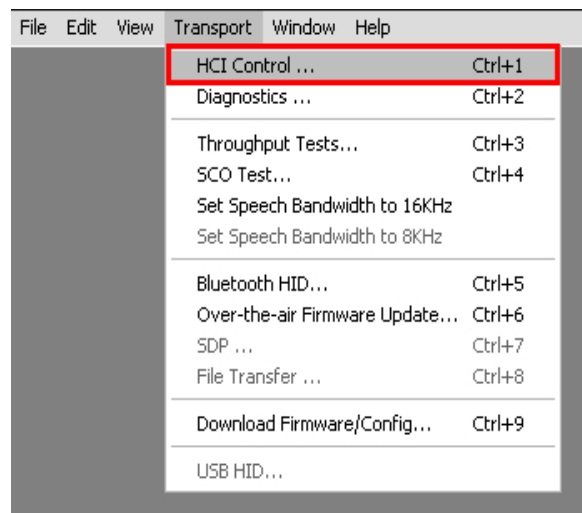
1. Connect the CYW20733 reference board(s) to the computer through the serial UART cable, but DO NOT power on the device yet.
2. Open BlueTool.
3. From the **View** menu, select **Log Window**.



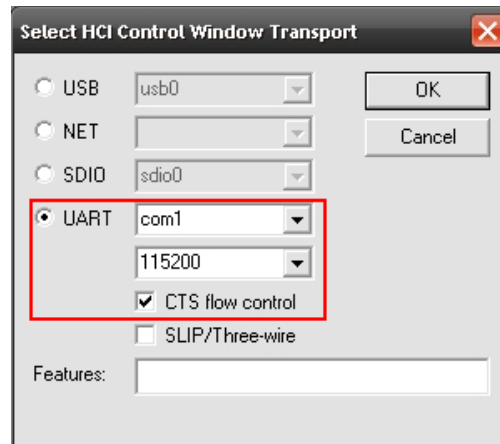
A blank Log Window will open.



4. From the **Transport** menu, select **HCI Control**.



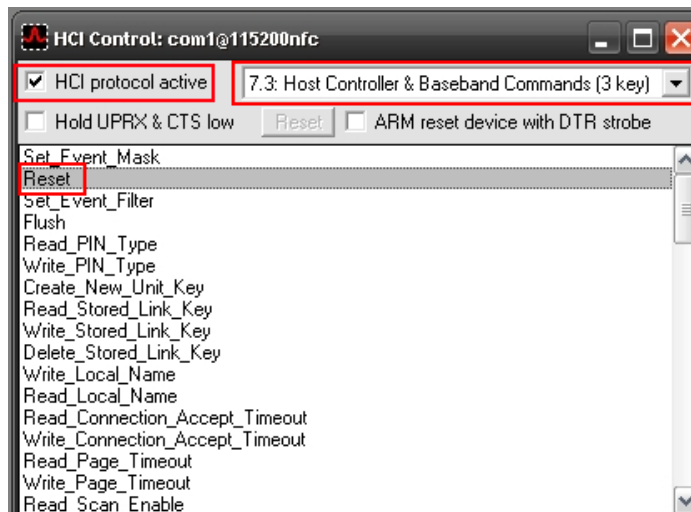
5. In the Select HCI Control Window Transport window, select the **UART** option. Select **com1** as the COM port and **115200** as the baud rate. Make sure that **CTS flow control** is selected.



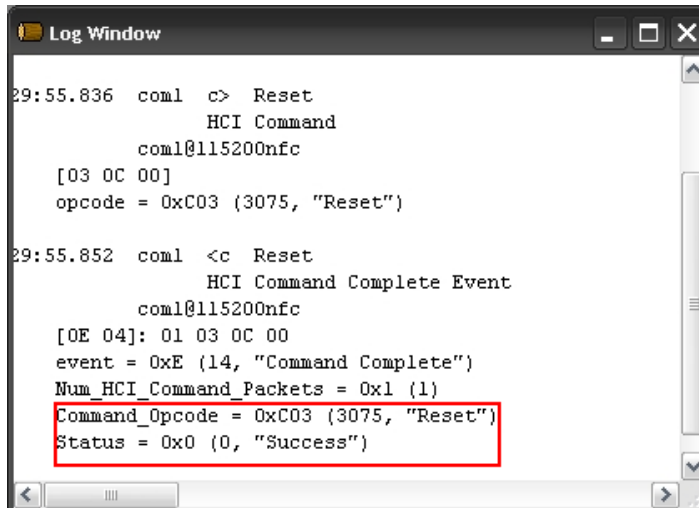
6. Click the **OK** button.

2.2 Setting Up the Download Transport

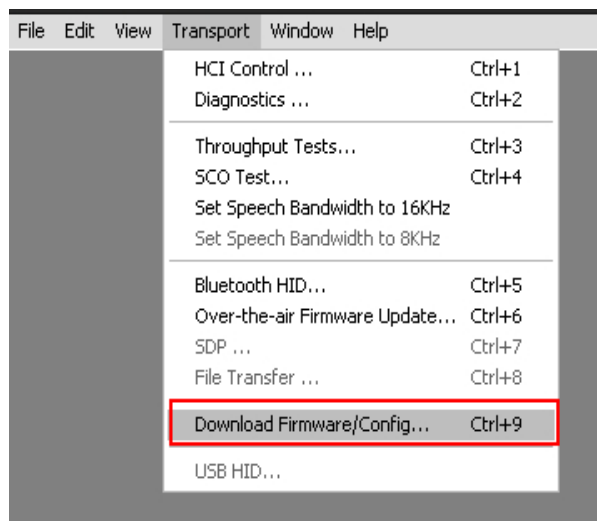
1. In the HCI Control command window, do the following:
 - a. Select the **HCI protocol active** option.
 - b. Power up the CYW20733 module
 - c. Clear and reselect (that is, toggle off, then on) the **HCI protocol active** option.
 - d. From the HCI Menu list, select **7.3: Host Controller & Baseband Commands (3 key)**.
 - e. Double-click the **Reset** command.



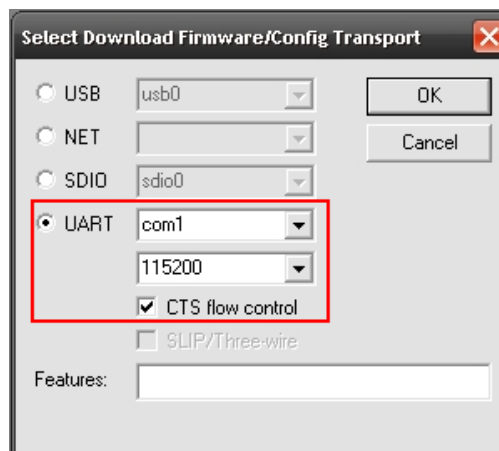
After a successful reset, the log window displays the reset status as “Success”.



- From the **Transport** menu, select **Download Firmware/Config**.



- In the Select Download Firmware/Config Transport window, select the **UART** option. Select **com1** as the COM port and **115200** as the baud rate. Make sure that **CTS flow control** is selected.



- Click the **OK** button. The Download window will open. Go to [Setting BlueTool Download Parameters on page 5](#) to complete the download process.

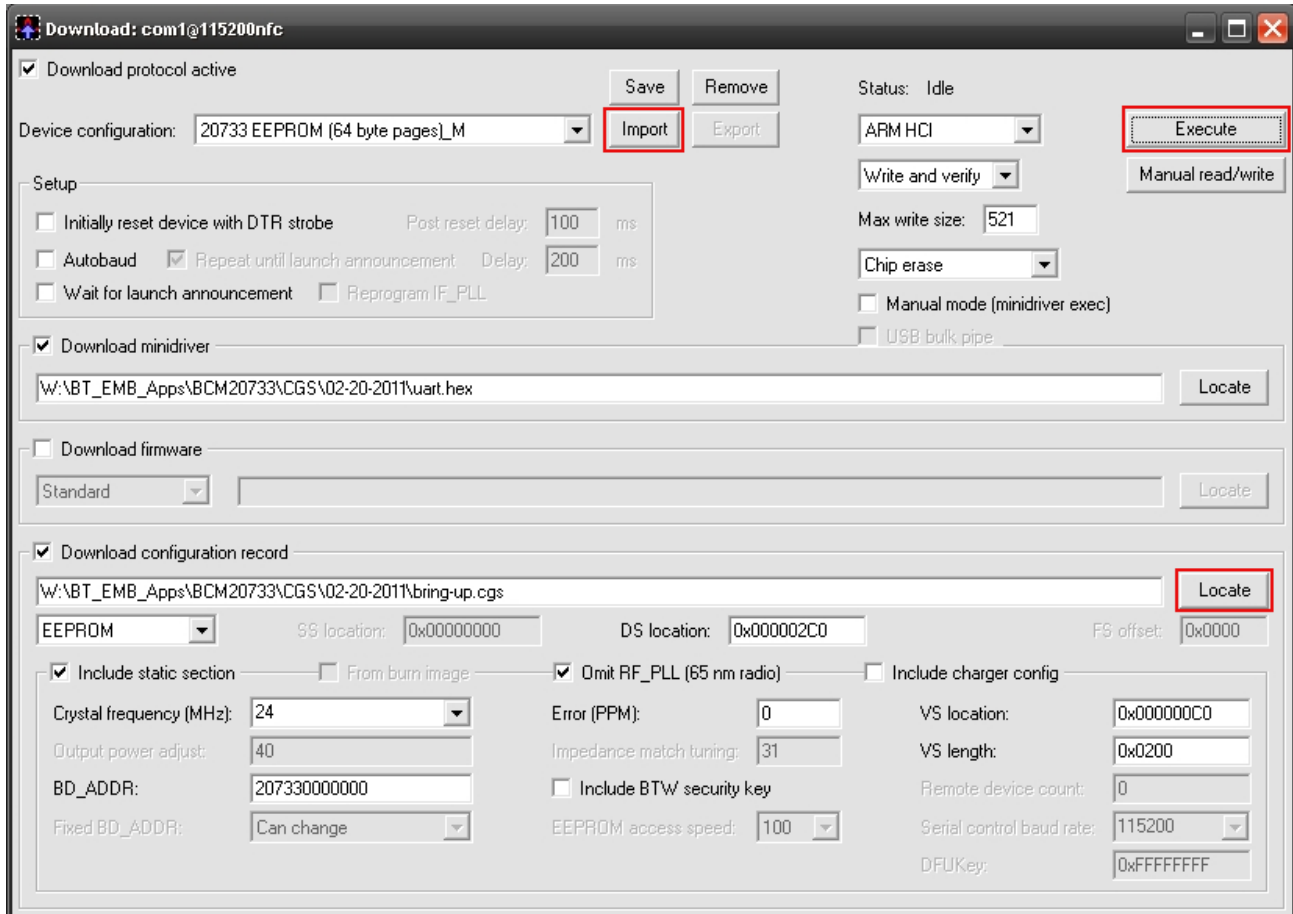
2.3 Setting BlueTool Download Parameters

BlueTool download parameters can be set up manually or through a *.btp configuration file¹.

2.3.1 Setting Download Parameters with a Configuration File

Follow the steps below to set BlueTool download parameters using the *.btp file.

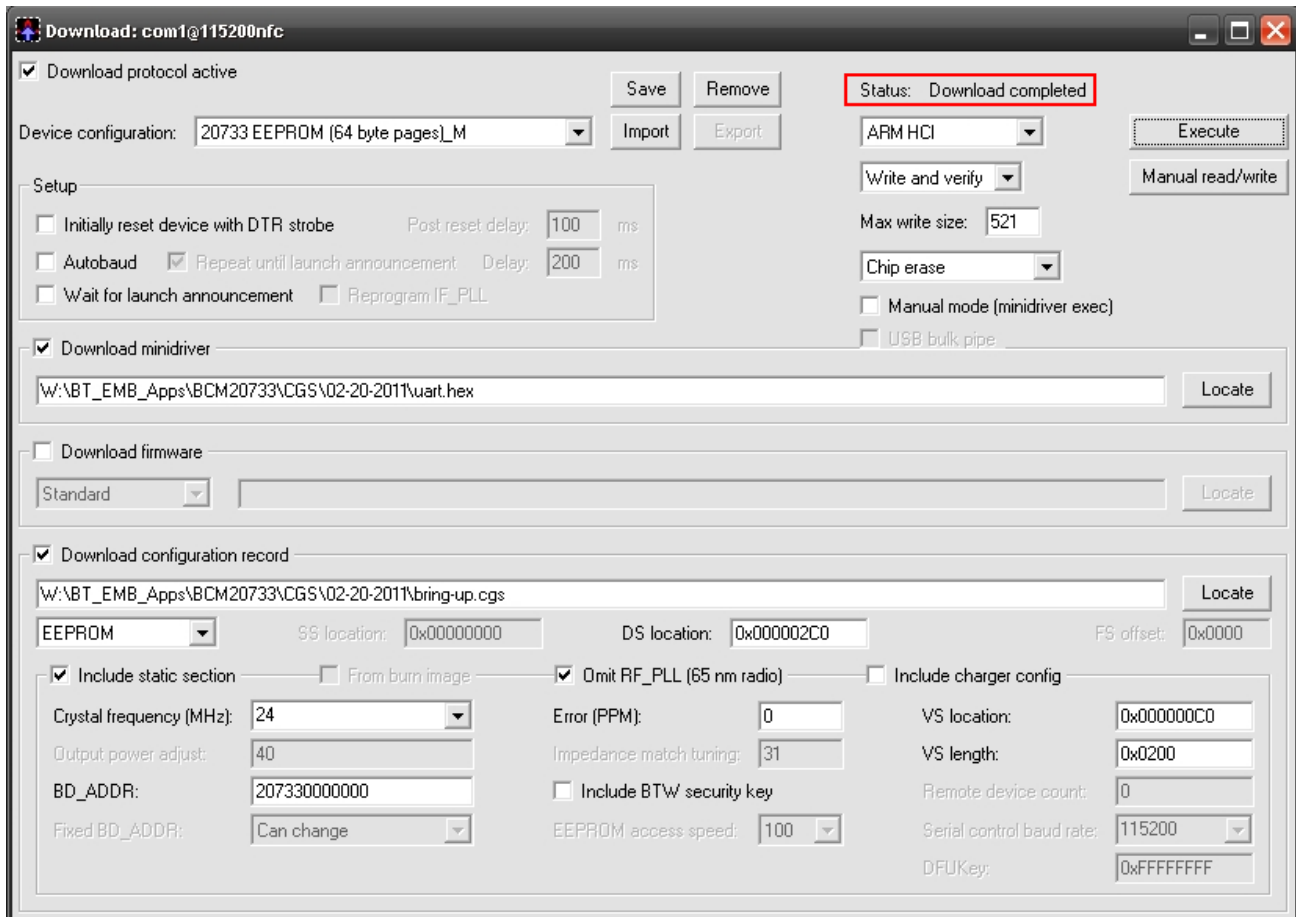
1. Click the **Import** button to import the *.btp file.
2. Click the **Locate** button and select the *.cgr¹ or *.cgs¹ configuration file.



3. **Crystal Frequency:** this value is set through the *.btp file. If the frequency is incorrect for the crystal installed on the CYW20733 module, manually enter the appropriate value.
4. **BD_ADDR:** enter the board address for the specific CYW20733 module.
5. Click **Execute** to start downloading the firmware.

1. This file is provided by your Cypress Sales or Engineering support representative (see [Cypress Developer Community](#)).

- Once the download is finished, the status changes to **Download completed**. Cycle the power on the device. The CYW20733 is now ready for normal operation.

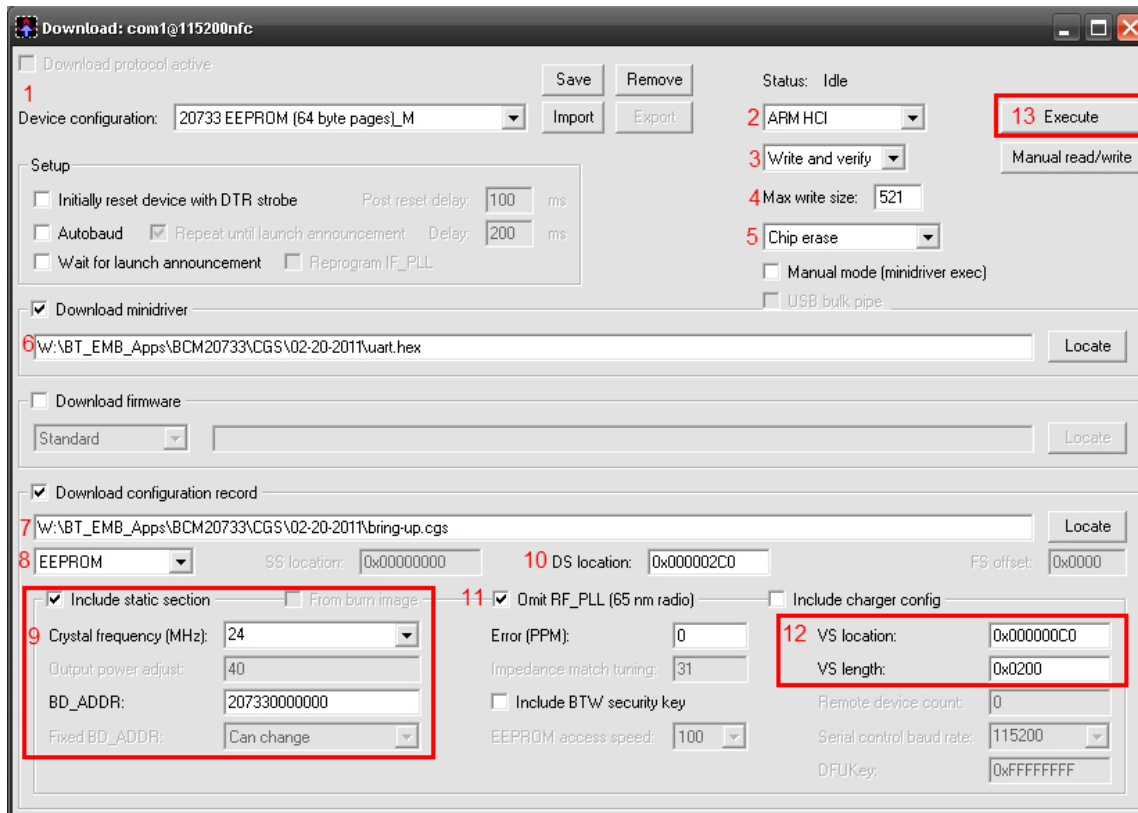


2.3.2 Setting Download Parameters Manually

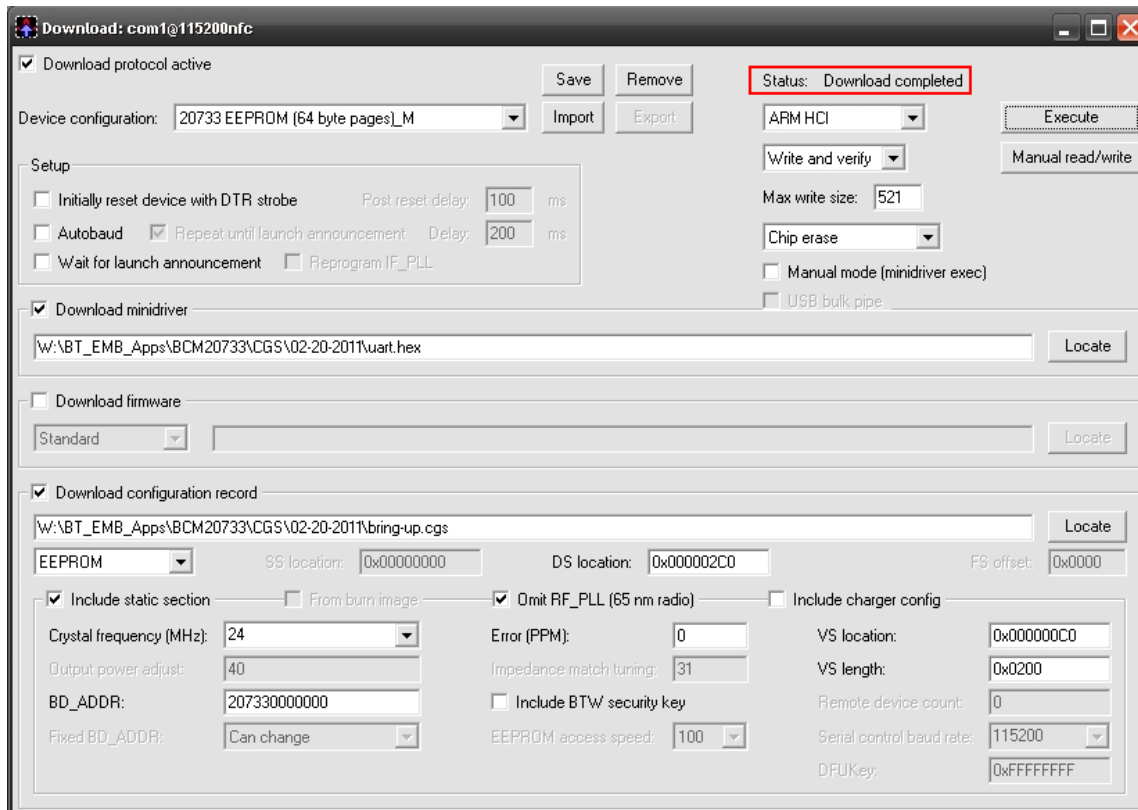
Follow the steps below to manually set BlueTool download parameters.

- In the Download window, set the following options:
 - From the **Device configuration** list, select **CYW20733 EEPROM (64 byte pages)**.
 - Select **ARM HCI**.
 - Select **Write and verify**.
 - For **Max write size**, enter **251**.
 - Select **Chip erase**.
 - Select **Download minidriver**, then click **Locate** to browse for the uart.hex file.
 - Select **Download configuration record**, then click **Locate** browse for the desired cgs/cgr file.
 - Select **EEPROM** as the memory.
 - Select **Include static section**. From the **Crystal frequency** list, select **24 MHz**. For **BD_ADDR**, enter the relevant BD Address.
 - For **DS location**, enter **0x000002C0**.
 - Select **Omit RF_PLL (65nm radio)**.
 - For **VS Location**, enter **0x000000C0**. For **VS length**, enter **0x0200**.

m. Click **Execute** to begin the download.



2. Once the download is finished, the status changes to **Download completed**. Cycle the power on the device. The CYW20733 is now ready for normal operation.



Document History Page

Document Title: AN214858 - Downloading Firmware to CYW20733 Modules Using BlueTool™				
Document Number: 002-14858				
Rev.	ECN No.	Orig. of Change	Submission Date	Description of Change
**	-	-	06/23/2011	20733-AN200-R Initial release
*A	5461578	UTSV	10/04/2016	Updated to Cypress template Added Cypress part numbering scheme
*B	5881048	AESATMP8	09/12/2017	Updated logo and Copyright.

Worldwide Sales and Design Support

Cypress maintains a worldwide network of offices, solution centers, manufacturer's representatives, and distributors. To find the office closest to you, visit us at [Cypress Locations](#).

Products

ARM® Cortex® Microcontrollers	cypress.com/arm
Automotive	cypress.com/automotive
Clocks & Buffers	cypress.com/clocks
Interface	cypress.com/interface
Internet of Things	cypress.com/iot
Memory	cypress.com/memory
Microcontrollers	cypress.com/mcu
PSoC	cypress.com/psoc
Power Management ICs	cypress.com/pmic
Touch Sensing	cypress.com/touch
USB Controllers	cypress.com/usb
Wireless Connectivity	cypress.com/wireless

PSoC® Solutions

[PSoC 1](#) | [PSoC 3](#) | [PSoC 4](#) | [PSoC 5LP](#) | [PSoC 6](#)

Cypress Developer Community

[Forums](#) | [WICED IOT Forums](#) | [Projects](#) | [Video](#) | [Blogs](#) | [Training](#) | [Components](#)

Technical Support

cypress.com/support

All other trademarks or registered trademarks referenced herein are the property of their respective owners.



Cypress Semiconductor
198 Champion Court
San Jose, CA 95134-1709

© Cypress Semiconductor Corporation, 2011-2017. This document is the property of Cypress Semiconductor Corporation and its subsidiaries, including Spansion LLC ("Cypress"). This document, including any software or firmware included or referenced in this document ("Software"), is owned by Cypress under the intellectual property laws and treaties of the United States and other countries worldwide. Cypress reserves all rights under such laws and treaties and does not, except as specifically stated in this paragraph, grant any license under its patents, copyrights, trademarks, or other intellectual property rights. If the Software is not accompanied by a license agreement and you do not otherwise have a written agreement with Cypress governing the use of the Software, then Cypress hereby grants you a personal, non-exclusive, nontransferable license (without the right to sublicense) (1s) under its copyright rights in the Software (a) for Software provided in source code form, to modify and reproduce the Software solely for use with Cypress hardware products, only internally within your organization, and (b) to distribute the Software in binary code form externally to end users (either directly or indirectly through resellers and distributors), solely for use on Cypress hardware product units, and (2) under those claims of Cypress's patents that are infringed by the Software (as provided by Cypress, unmodified) to make, use, distribute, and import the Software solely for use with Cypress hardware products. Any other use, reproduction, modification, translation, or compilation of the Software is prohibited.

TO THE EXTENT PERMITTED BY APPLICABLE LAW, CYPRESS MAKES NO WARRANTY OF ANY KIND, EXPRESS OR IMPLIED, WITH REGARD TO THIS DOCUMENT OR ANY SOFTWARE OR ACCOMPANYING HARDWARE, INCLUDING, BUT NOT LIMITED TO, THE IMPLIED WARRANTIES OF MERCHANTABILITY AND FITNESS FOR A PARTICULAR PURPOSE. To the extent permitted by applicable law, Cypress reserves the right to make changes to this document without further notice. Cypress does not assume any liability arising out of the application or use of any product or circuit described in this document. Any information provided in this document, including any sample design information or programming code, is provided only for reference purposes. It is the responsibility of the user of this document to properly design, program, and test the functionality and safety of any application made of this information and any resulting product. Cypress products are not designed, intended, or authorized for use as critical components in systems designed or intended for the operation of weapons, weapons systems, nuclear installations, life-support devices or systems, other medical devices or systems (including resuscitation equipment and surgical implants), pollution control or hazardous substances management, or other uses where the failure of the device or system could cause personal injury, death, or property damage ("Unintended Uses"). A critical component is any component of a device or system whose failure to perform can be reasonably expected to cause the failure of the device or system, or to affect its safety or effectiveness. Cypress is not liable, in whole or in part, and you shall and hereby do release Cypress from any claim, damage, or other liability arising from or related to all Unintended Uses of Cypress products. You shall indemnify and hold Cypress harmless from and against all claims, costs, damages, and other liabilities, including claims for personal injury or death, arising from or related to any Unintended Uses of Cypress products.

Cypress, the Cypress logo, Spansion, the Spansion logo, and combinations thereof, WICED, PSoC, CapSense, EZ-USB, F-RAM, and Traveo are trademarks or registered trademarks of Cypress in the United States and other countries. For a more complete list of Cypress trademarks, visit cypress.com. Other names and brands may be claimed as property of their respective owners.