



The following document contains information on Cypress products. The document has the series name, product name, and ordering part numbering with the prefix “MB”. However, Cypress will offer these products to new and existing customers with the series name, product name, and ordering part number with the prefix “CY”.

How to Check the Ordering Part Number

1. Go to www.cypress.com/pcn.
2. Enter the keyword (for example, ordering part number) in the **SEARCH PCNS** field and click **Apply**.
3. Click the corresponding title from the search results.
4. Download the Affected Parts List file, which has details of all changes

For More Information

Please contact your local sales office for additional information about Cypress products and solutions.

About Cypress

Cypress is the leader in advanced embedded system solutions for the world's most innovative automotive, industrial, smart home appliances, consumer electronics and medical products. Cypress' microcontrollers, analog ICs, wireless and USB-based connectivity solutions and reliable, high-performance memories help engineers design differentiated products and get them to market first. Cypress is committed to providing customers with the best support and development resources on the planet enabling them to disrupt markets by creating new product categories in record time. To learn more, go to www.cypress.com.

F²MC-16LX Family, MB90330A series, Notes on Debug Environment Setting for MB90330A series

MB90F335A is a microcontroller equipped with RAM of 30KB. MB90V330A, the evaluation chip common to MB90330A series, is used to debug MB90F335A, though the RAM capacity of the common evaluation chip, MB90V330A, is 28KB. Therefore, when MB90F335A is debugged, RAM area is insufficient by 2KB (area of 007100h to 0078FFh)

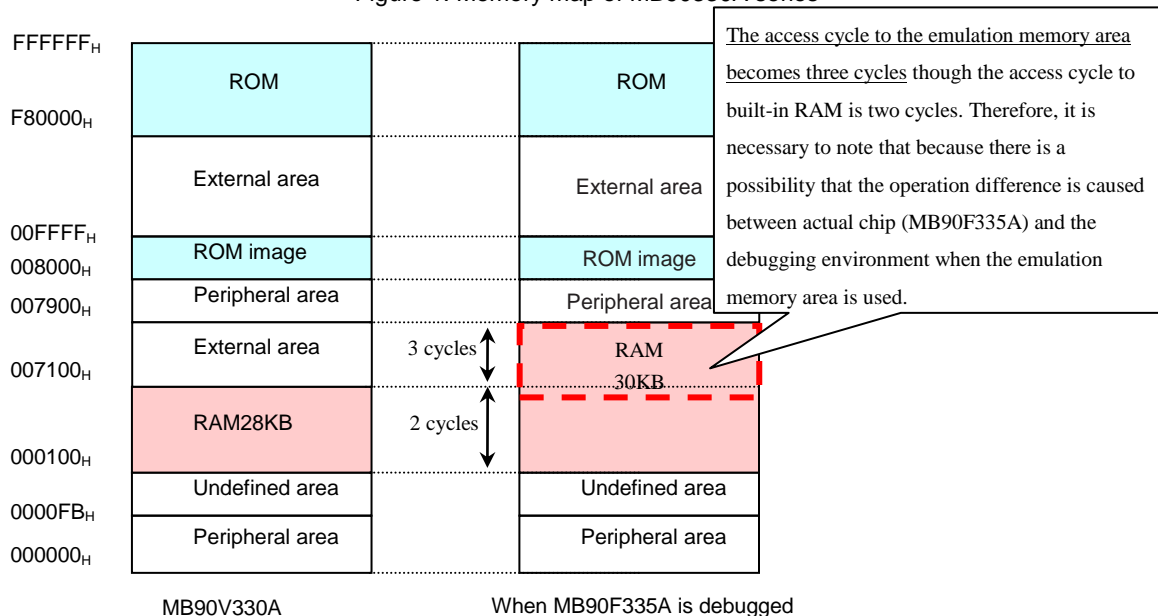
1 Introduction

MB90F335A is a microcontroller equipped with RAM of 30KB. MB90V330A, the evaluation chip common to MB90330A series, is used to debug MB90F335A, though the RAM capacity of the common evaluation chip, MB90V330A, is 28KB. Therefore, when MB90F335A is debugged, RAM area is insufficient by 2KB (area of 007100h to 0078FFh). (See the figure below.)

Use the emulation memory installed in the debugger as a memory of 007100h to 0078FFh area in the debugging environment of MB90F335A to deal with this problem. Using the area of 007100h to 0078FFh becomes possible though the access cycle to the emulation memory becomes three cycles.

This document explains the setting procedures of the emulation memory area in the debugging environment of MB90F335A.

Figure 1. Memory map of MB90330A series

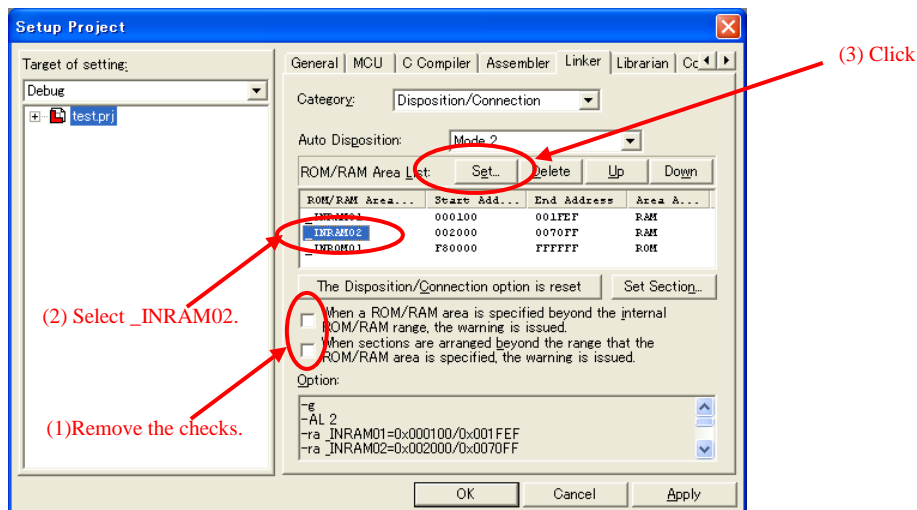


2 Method of setting debug environment when MB90F335A is used

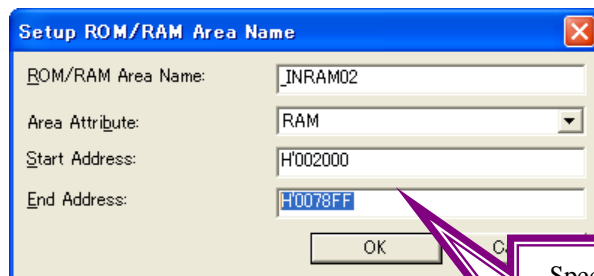
2.1 Setting change of linker of SOFTUNE

The program development of MCU of the F²MC-16LX family is executed by using integrated environment SOFTUNE development. In SOFTUNE, the ROM and RAM areas that can be used in the developed program are defined beforehand. However, when MB90F335A is selected as target MCU, the area to address 0070FFh is defined for RAM. Therefore, when the area of 007100h to 0078FFh is used, it is necessary for the user to add RAM area definition. Add the RAM area conforming to the following procedures.

1. Select "Setup Project" from "Project" menu, and open the "Setup Project" window. Select the tab of "Linker" in the window and "Disposition/Connection" from the menu of the category to show the window in the figure below.
2. Remove the checks on the following setting items.
 - "When a ROM/RAM area is specified beyond the internal ROM/RAM range. The warning is issued."
 - "When section are arraigned beyond the range that the ROM/RAM area is ROM/RAM specified. The warning is issued."
3. Select "_INRAM02" and then "Set" of ROM/RAM Area List to open the window of "Setup ROM/RAM Area Name".

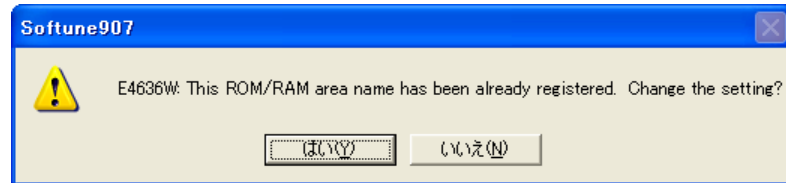


4. Change the End address in "Setup ROM/RAM Area Name" window to "H'0078FF".



- Specification of ROM/RAM area list
- ROM/RAM area name: _ INRAM02
- Area attribute: RAM
- Start address: H '002000
- End address: 0078 H 'FF

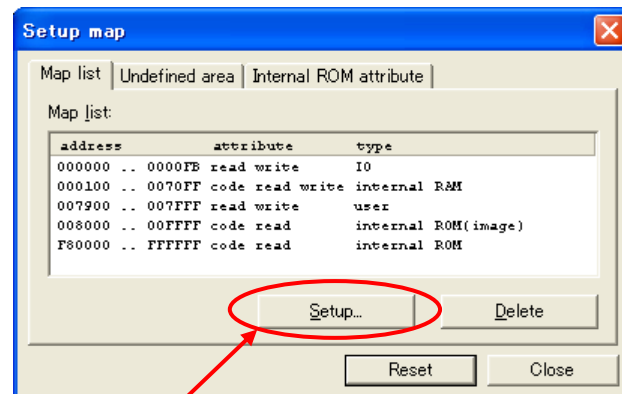
- Execute the operation in Item (4) to display the following message windows. If the setting is changed here, adding procedures of RAM area are completed.



2.2 Setting procedures of emulation memory

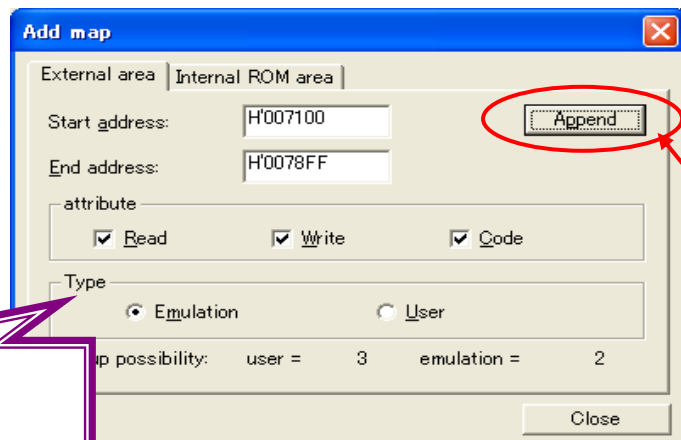
To debug MB90F335A, substitute the emulation memory of the debugger for RAM area of 007100h to 0078FFh. Set the emulation memory of the debugger conforming to the following procedures.

- After starting the debugging, select "Memory Map" from the "Setup" menu and open the "Setup map" window.
- Select "Setup" in "Setup map" window to open "Add map" window shown in the figure below.



Click

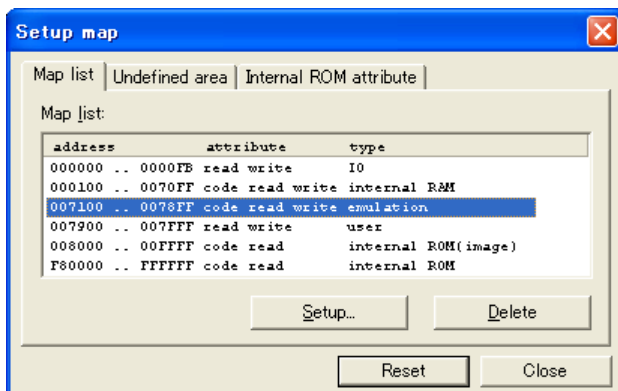
- Set "Start address/End address," "attribute," and "Type" in "Add map" window. Set "emulation" for Type. After the setting, click "Append" button and then close the "Add map" window.



Click

- Setting of map addition
- Start address: H '007100
- End address: 0078 H 'FF
- Attribute: Lead/write/code.
- Type: Emulation

4. And then, return to the "Setup map" window to confirm whether the memory area set in Item (3) is added. The access to the set memory area becomes possible if it is added.



Document History

Document Title: AN206432 - F²MC-16LX Family, MB90330A series, Notes on Debug Environment Setting for MB90330A series

Document Number: 002-06432

Revision	ECN	Orig. of Change	Submission Date	Description of Change
**	-	YUIS	08/13/2008	Initial Release
*A	5294876	YUIS	06/03/2016	Migrated Spansion Application Note "AN07-00179-1E" to Cypress format.
*B	5876112	AESATMP9	09/07/2017	Updated logo and copyright.

Worldwide Sales and Design Support

Cypress maintains a worldwide network of offices, solution centers, manufacturer's representatives, and distributors. To find the office closest to you, visit us at [Cypress Locations](#).

Products

ARM® Cortex® Microcontrollers	cypress.com/arm
Automotive	cypress.com/automotive
Clocks & Buffers	cypress.com/clocks
Interface	cypress.com/interface
Internet of Things	cypress.com/iot
Memory	cypress.com/memory
Microcontrollers	cypress.com/mcu
PSoC	cypress.com/psoc
Power Management ICs	cypress.com/pmic
Touch Sensing	cypress.com/touch
USB Controllers	cypress.com/usb
Wireless Connectivity	cypress.com/wireless

PSoC® Solutions

[PSoC 1](#) | [PSoC 3](#) | [PSoC 4](#) | [PSoC 5LP](#) | [PSoC 6](#)

Cypress Developer Community

[Forums](#) | [WICED IOT Forums](#) | [Projects](#) | [Videos](#) | [Blogs](#) | [Training](#) | [Components](#)

Technical Support

cypress.com/support

All other trademarks or registered trademarks referenced herein are the property of their respective owners.



© Cypress Semiconductor Corporation, 2008-2017. This document is the property of Cypress Semiconductor Corporation and its subsidiaries, including Spansion LLC ("Cypress"). This document, including any software or firmware included or referenced in this document ("Software"), is owned by Cypress under the intellectual property laws and treaties of the United States and other countries worldwide. Cypress reserves all rights under such laws and treaties and does not, except as specifically stated in this paragraph, grant any license under its patents, copyrights, trademarks, or other intellectual property rights. If the Software is not accompanied by a license agreement and you do not otherwise have a written agreement with Cypress governing the use of the Software, then Cypress hereby grants you a personal, non-exclusive, nontransferable license (without the right to sublicense) (1) under its copyright rights in the Software (a) for Software provided in source code form, to modify and reproduce the Software solely for use with Cypress hardware products, only internally within your organization, and (b) to distribute the Software in binary code form externally to end users (either directly or indirectly through resellers and distributors), solely for use on Cypress hardware product units, and (2) under those claims of Cypress's patents that are infringed by the Software (as provided by Cypress, unmodified) to make, use, distribute, and import the Software solely for use with Cypress hardware products. Any other use, reproduction, modification, translation, or compilation of the Software is prohibited.

TO THE EXTENT PERMITTED BY APPLICABLE LAW, CYPRESS MAKES NO WARRANTY OF ANY KIND, EXPRESS OR IMPLIED, WITH REGARD TO THIS DOCUMENT OR ANY SOFTWARE OR ACCOMPANYING HARDWARE, INCLUDING, BUT NOT LIMITED TO, THE IMPLIED WARRANTIES OF MERCHANTABILITY AND FITNESS FOR A PARTICULAR PURPOSE. To the extent permitted by applicable law, Cypress reserves the right to make changes to this document without further notice. Cypress does not assume any liability arising out of the application or use of any product or circuit described in this document. Any information provided in this document, including any sample design information or programming code, is provided only for reference purposes. It is the responsibility of the user of this document to properly design, program, and test the functionality and safety of any application made of this information and any resulting product. Cypress products are not designed, intended, or authorized for use as critical components in systems designed or intended for the operation of weapons, weapons systems, nuclear installations, life-support devices or systems, other medical devices or systems (including resuscitation equipment and surgical implants), pollution control or hazardous substances management, or other uses where the failure of the device or system could cause personal injury, death, or property damage ("Unintended Uses"). A critical component is any component of a device or system whose failure to perform can be reasonably expected to cause the failure of the device or system, or to affect its safety or effectiveness. Cypress is not liable, in whole or in part, and you shall and hereby do release Cypress from any claim, damage, or other liability arising from or related to all Unintended Uses of Cypress products. You shall indemnify and hold Cypress harmless from and against all claims, costs, damages, and other liabilities, including claims for personal injury or death, arising from or related to any Unintended Uses of Cypress products.

Cypress, the Cypress logo, Spansion, the Spansion logo, and combinations thereof, WICED, PSoC, CapSense, EZ-USB, F-RAM, and Traveo are trademarks or registered trademarks of Cypress in the United States and other countries. For a more complete list of Cypress trademarks, visit cypress.com. Other names and brands may be claimed as property of their respective owners.