



Please note that Cypress is an Infineon Technologies Company.

The document following this cover page is marked as “Cypress” document as this is the company that originally developed the product. Please note that Infineon will continue to offer the product to new and existing customers as part of the Infineon product portfolio.

Continuity of document content

The fact that Infineon offers the following product as part of the Infineon product portfolio does not lead to any changes to this document. Future revisions will occur when appropriate, and any changes will be set out on the document history page.

Continuity of ordering part numbers

Infineon continues to support existing part numbers. Please continue to use the ordering part numbers listed in the datasheet for ordering.



THIS SPEC IS OBSOLETE

Spec No: 002-05268

Spec Title: AN205268 - F2MC-8FX FAMILY MB951XX
SERIES ASYNCHRONOUS FLASH
PROGRAMMING

Replaced By: NONE

F²MC-8FX Family MB951XX Series Asynchronous Flash Programming

This application note describes how to program the Flash devices of the Cypress F²MC-8FX MB951xx series in serial asynchronous mode.

1 Introduction

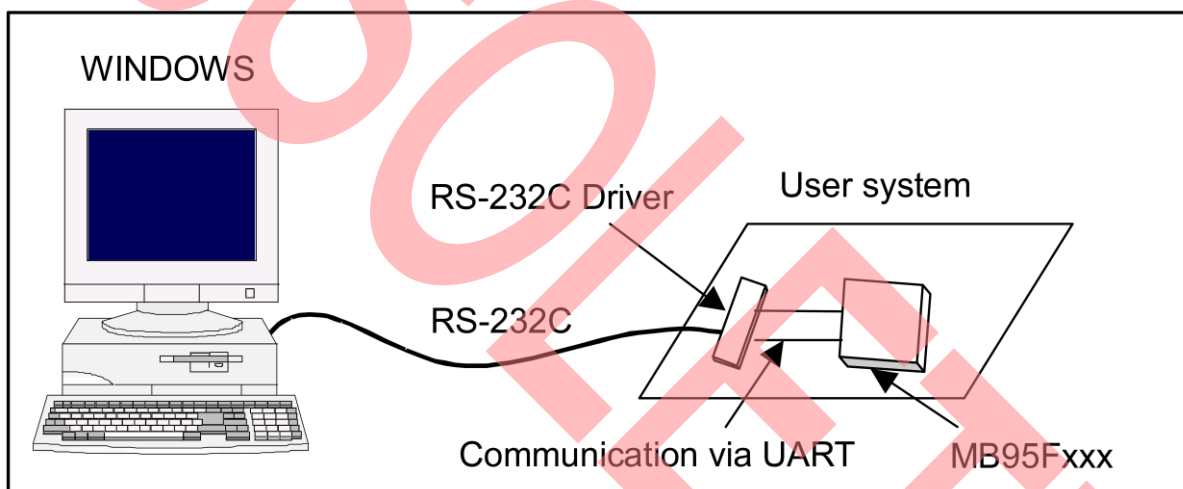
This application note describes how to program the Flash devices of the Cypress F²MC-8FX MB951xx series in serial asynchronous mode.

For additional information refer to “Cypress Flash MCU Programmer for F²MC-8FX Specifications”.

2 Hardware Setup

This chapter explains how to setup hardware for flash programming.

2.1 Connection to PC



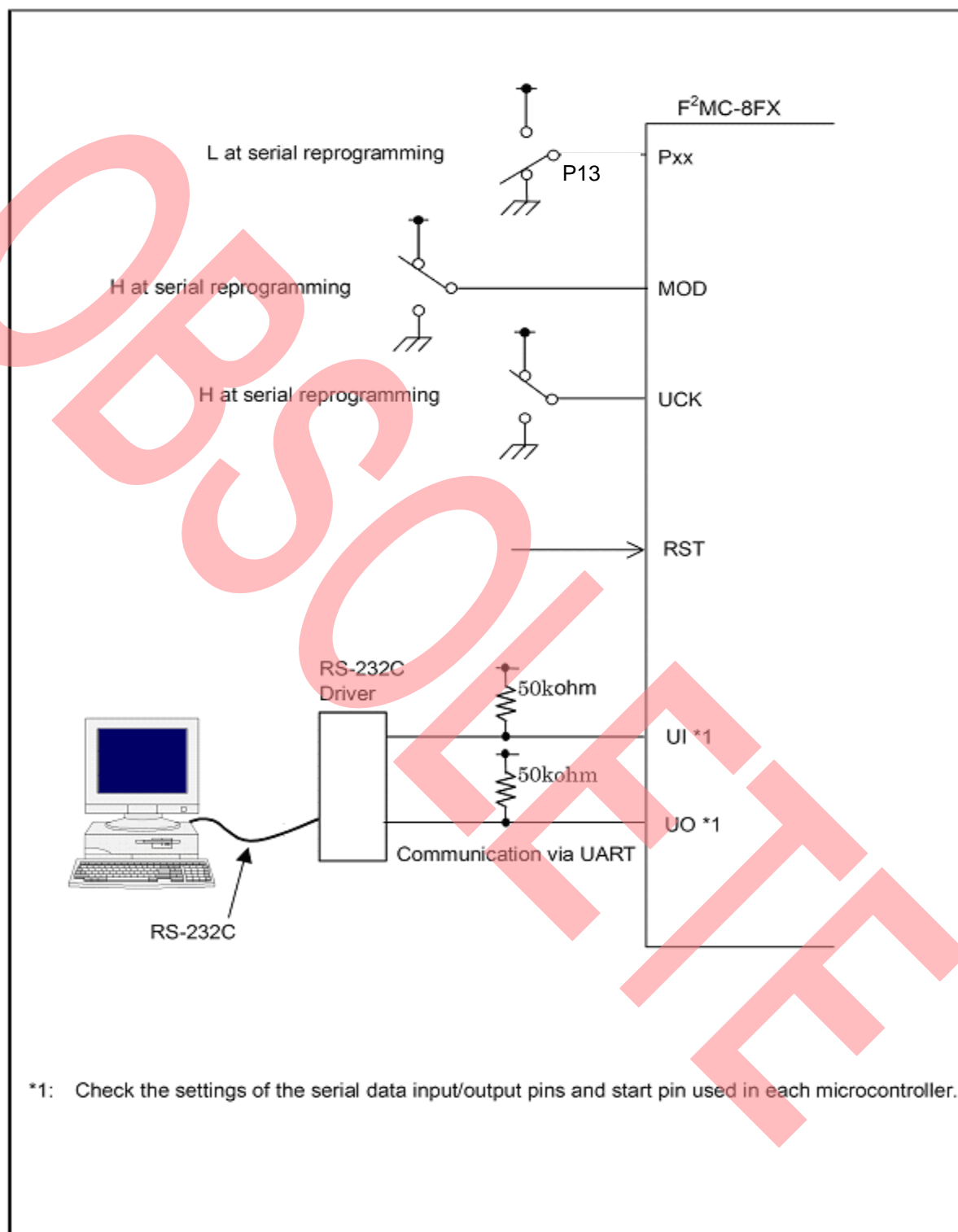
Connect the microcontroller's UART to the PC (COM 0 - COM 8) via RS232 communication cable. Note that the microcontroller needs an external RS232 driver for communication.

2.2 Settings on microcontroller board

To set the microcontroller into serial asynchronous programming mode the following pins have to be set according to the following table:

Pin name	Pin description	Logical level
P12 / UCK0	UART/SIO clock input	High (pull-up)
MOD	Operation mode specification	High
P13		Low
P10 / UI0	Serial input	High
P11 / UO0	Serial output	High

Figure 1. Configuration for serial asynchronous programming mode



3 Software Setup

This chapter explains how to setup Cypress Flash Programmer Software for F²MC-8FX family.

3.1 Installation

Software can be downloaded from website: www.cypress.com/supporttools/8fx.

To install the Cypress Flash 8FX-MCU Programming Software you have to execute the setup program "PCW8FXsetup.exe". Then follow the steps of the setup dialog.

After successful installation you will find the Cypress Flash Programmer in folder:

"C:\Program Files\Cypress\Cypress Flash MCU Programmer\FMC8FX\flash.exe"

To start Flash Programmer click 'Windows Start button' => 'Programs' => 'Cypress FLASH MCU Programmer' => 'FMC8FX'

The symbol of this tool looks like the following picture:

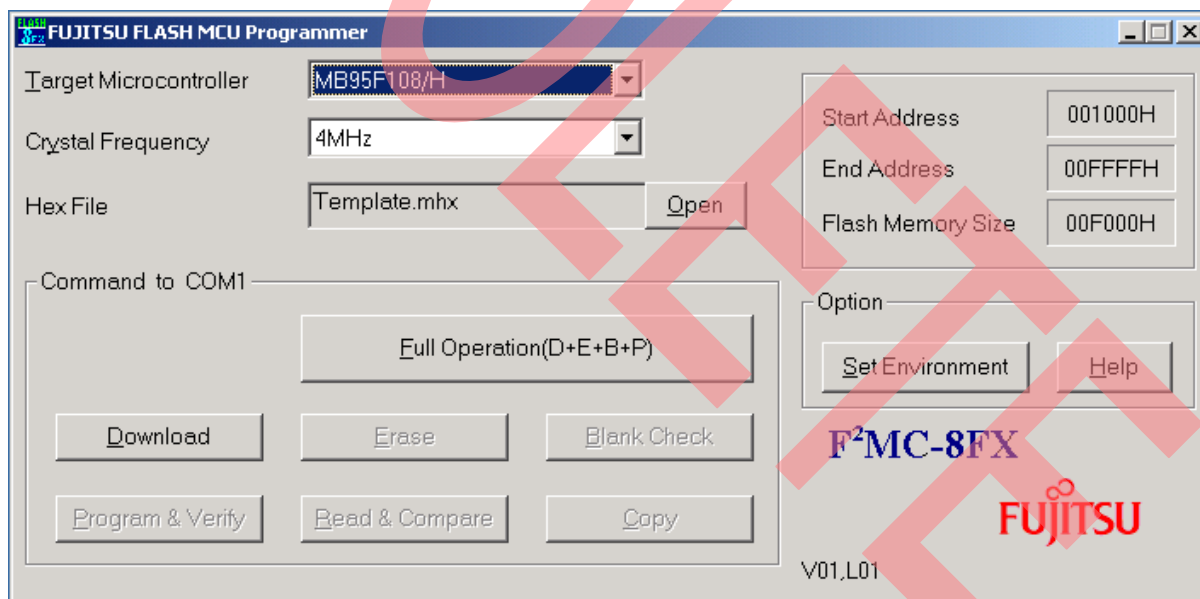


4 Flash Programmer

This chapter explains how to use Cypress Flash Programmer Software for F²MC-8FX family.

4.1 Settings

When the Cypress 8FX-MCU Flash Programmer is executed the following window occurs:

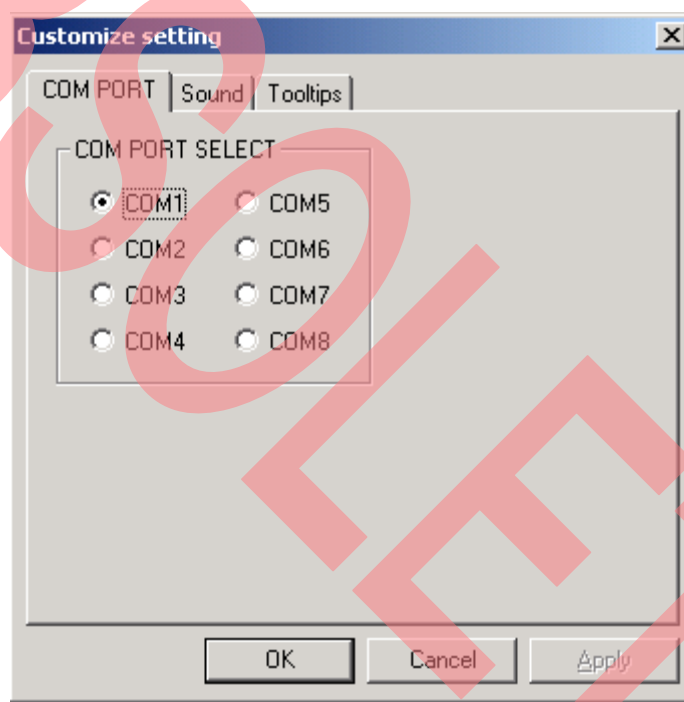


Select the target microcontroller and crystal frequency from the shortlist.

Following entries can be chosen:

Product type	Crystal frequency
MB95F108/H	2MHz, 3MHz, 3.58 MHz, 4MHz, 4.92MHz, 5MHz, 6MHz, 8MHz, 10MHz, 12MHz, 16MHz, 20MHz
MB95F118/H	
MB95F128/H	
MB95F136/H	
MB95F146	
MB95F156/M	
MB95F168/M	
MB95F176J	

To choose COM-port click on **[Set Environment]** and select the right PC COM port on the upcoming window.

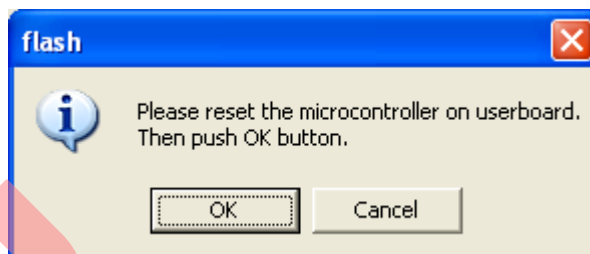


4.2 Programming

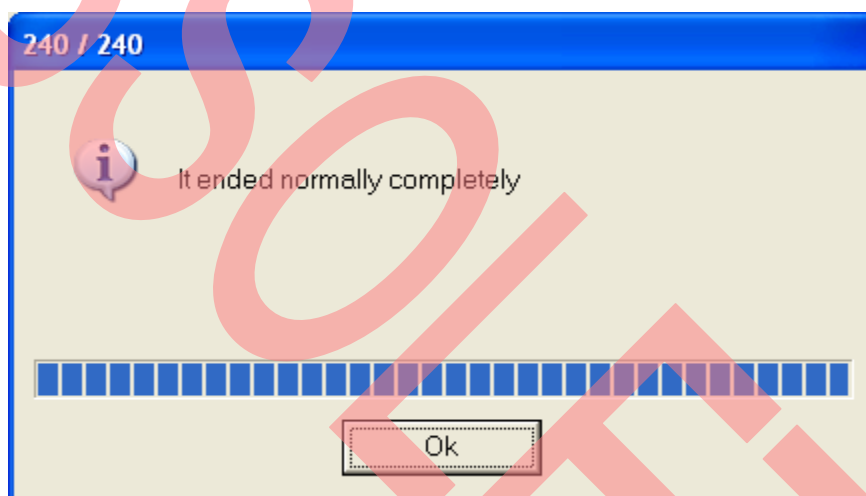
4.2.1 Full Operation

To choose program file click **[Open]** and browse to the file (mhx, cnv or ahx format is possible) you want to program to the 8FX microcontroller.

Click the **[Full Operation]** button. Following window is opened:



Reset your microcontroller and click **[OK]**. Now a connection to the microcontroller is started and a control program is transferred. The needed steps like erase, blank check and programming are performed. After successful programming following message appears on screen.



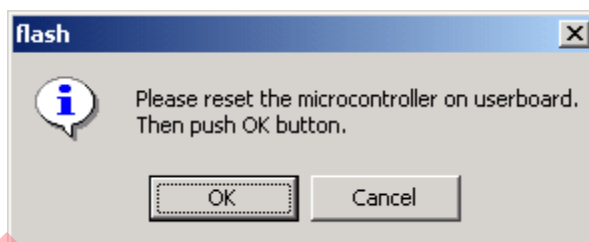
Click **[OK]**, set MOD pin of the microcontroller to low level to enter run mode and reset your microcontroller to start your application.

Note: Do not use [Full Operation] button with version V01L01a and V01L02!

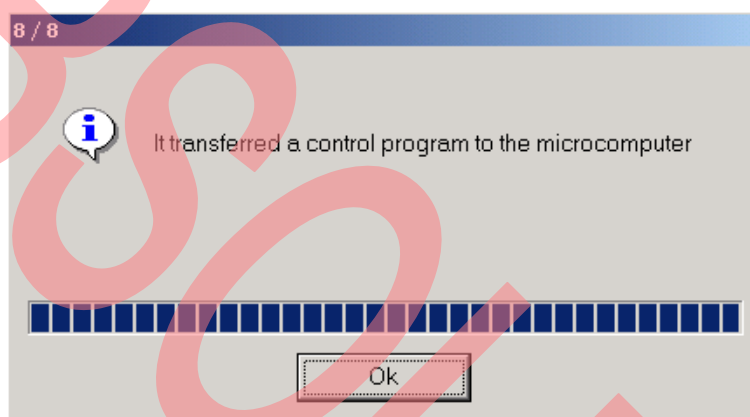
4.2.2 Single Steps

To choose program file click **[Open]** and browse to the file (mhx, cnv or ahx format is possible) you want to program to the 8FX microcontroller.

Click the **[Download]** button. Following window is opened:



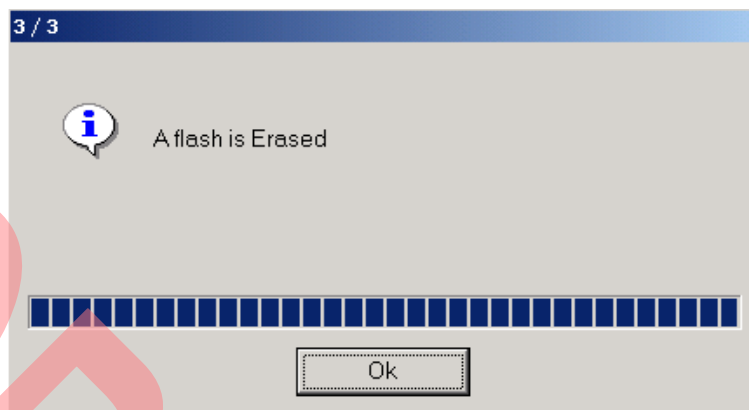
Reset your microcontroller and click **[OK]**. Now a connection to the microcontroller is started and a control program is transferred.



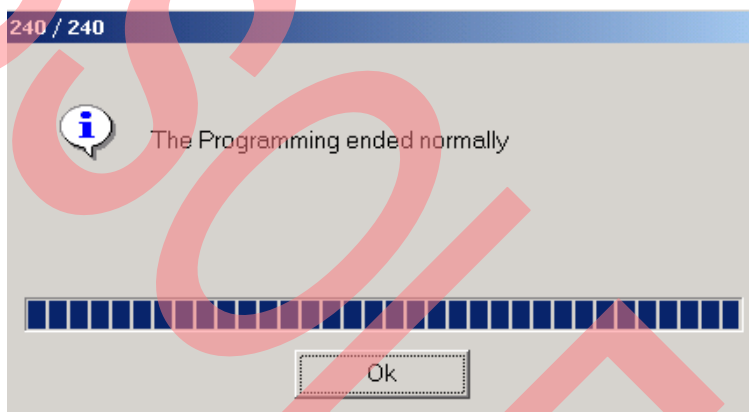
Click **[OK]** after successful download operation. To start next step click **[Erase]** button. A complete chip erase is executed.



After a completed erase click **[OK]**. Now a **[Blank Check]** can be started. If flash is completely erased, the following window occurs.



Click **[OK]** to close window and start programming by clicking to **[Program & Verify]** button. If there are no errors, the following message is displayed.



Click **[OK]**, set MOD pin of the microcontroller to low level to enter run mode and reset your microcontroller to start your application.

There are two additionally functions available:

Read & Compare: Compare Hex File with data in flash memory of microcontroller

Copy: Save data in flash memory of microcontroller to file

Document History

Document Title: AN205268 - F²MC-8FX Family MB951XX Series Asynchronous Flash Programming

Document Number: 002-05268

Revision	ECN	Orig. of Change	Submission Date	Description of Change
**	—	WOFR	10/12/2004	Initial release.
			11/08/2005	Added MB95F128 and MB95F136.
			03/16/2006	Corrections.
			11/05/2007	Update, added full operation description.
*A	5265589	WOFR	05/10/2016	Migrated Spansion Application note from MCU-AN-395003-E-V13 to Cypress format.
*B	5612339	WOFR	01/31/2017	Spec obsoleted, no further updates planned.



CYPRESS®

Embedded in Tomorrow™

Worldwide Sales and Design Support

Cypress maintains a worldwide network of offices, solution centers, manufacturer's representatives, and distributors. To find the office closest to you, visit us at [Cypress Locations](#).

Products

ARM® Cortex® Microcontrollers	cypress.com/arm
Automotive	cypress.com/automotive
Clocks & Buffers	cypress.com/clocks
Interface	cypress.com/interface
Lighting & Power Control	cypress.com/powerpsoc
Memory	cypress.com/memory
PSoC	cypress.com/psoc
Touch Sensing	cypress.com/touch
USB Controllers	cypress.com/usb
Wireless/RF	cypress.com/wireless

PSoC® Solutions

[PSoC 1](#) | [PSoC 3](#) | [PSoC 4](#) | [PSoC 5LP](#)

Cypress Developer Community

[Forums](#) | [Projects](#) | [Videos](#) | [Blogs](#) | [Training](#) | [Components](#)

Technical Support

cypress.com/support

PSoC is a registered trademark and PSoC Creator is a trademark of Cypress Semiconductor Corporation. All other trademarks or registered trademarks referenced herein are the property of their respective owners.



Cypress Semiconductor
198 Champion Court
San Jose, CA 95134-1709

Phone : 408-943-2600
Fax : 408-943-4730
Website : www.cypress.com

© Cypress Semiconductor Corporation, 2004-2016. This document is the property of Cypress Semiconductor Corporation and its subsidiaries, including Spansion LLC ("Cypress"). This document, including any software or firmware included or referenced in this document ("Software"), is owned by Cypress under the intellectual property laws and treaties of the United States and other countries worldwide. Cypress reserves all rights under such laws and treaties and does not, except as specifically stated in this paragraph, grant any license under its patents, copyrights, trademarks, or other intellectual property rights. If the Software is not accompanied by a license agreement and you do not otherwise have a written agreement with Cypress governing the use of the Software, then Cypress hereby grants you a personal, non-exclusive, nontransferable license (without the right to sublicense) (1) under its copyright rights in the Software (a) for Software provided in source code form, to modify and reproduce the Software solely for use with Cypress hardware products, only internally within your organization, and (b) to distribute the Software in binary code form externally to end users (either directly or indirectly through resellers and distributors), solely for use on Cypress hardware product units, and (2) under those claims of Cypress's patents that are infringed by the Software (as provided by Cypress, unmodified) to make, use, distribute, and import the Software solely for use with Cypress hardware products. Any other use, reproduction, modification, translation, or compilation of the Software is prohibited.

TO THE EXTENT PERMITTED BY APPLICABLE LAW, CYPRESS MAKES NO WARRANTY OF ANY KIND, EXPRESS OR IMPLIED, WITH REGARD TO THIS DOCUMENT OR ANY SOFTWARE OR ACCOMPANYING HARDWARE, INCLUDING, BUT NOT LIMITED TO, THE IMPLIED WARRANTIES OF MERCHANTABILITY AND FITNESS FOR A PARTICULAR PURPOSE. To the extent permitted by applicable law, Cypress reserves the right to make changes to this document without further notice. Cypress does not assume any liability arising out of the application or use of any product or circuit described in this document. Any information provided in this document, including any sample design information or programming code, is provided only for reference purposes. It is the responsibility of the user of this document to properly design, program, and test the functionality and safety of any application made of this information and any resulting product. Cypress products are not designed, intended, or authorized for use as critical components in systems designed or intended for the operation of weapons, weapons systems, nuclear installations, life-support devices or systems, other medical devices or systems (including resuscitation equipment and surgical implants), pollution control or hazardous substances management, or other uses where the failure of the device or system could cause personal injury, death, or property damage ("Unintended Uses"). A critical component is any component of a device or system whose failure to perform can be reasonably expected to cause the failure of the device or system, or to affect its safety or effectiveness. Cypress is not liable, in whole or in part, and you shall and hereby do release Cypress from any claim, damage, or other liability arising from or related to all Unintended Uses of Cypress products. You shall indemnify and hold Cypress harmless from and against all claims, costs, damages, and other liabilities, including claims for personal injury or death, arising from or related to any Unintended Uses of Cypress products.

Cypress, the Cypress logo, Spansion, the Spansion logo, and combinations thereof, PSoC, CapSense, EZ-USB, F-RAM, and Traveo are trademarks or registered trademarks of Cypress in the United States and other countries. For a more complete list of Cypress trademarks, visit cypress.com. Other names and brands may be claimed as property of their respective owners.