

Please note that Cypress is an Infineon Technologies Company.

The document following this cover page is marked as “Cypress” document as this is the company that originally developed the product. Please note that Infineon will continue to offer the product to new and existing customers as part of the Infineon product portfolio.

Continuity of document content

The fact that Infineon offers the following product as part of the Infineon product portfolio does not lead to any changes to this document. Future revisions will occur when appropriate, and any changes will be set out on the document history page.

Continuity of ordering part numbers

Infineon continues to support existing part numbers. Please continue to use the ordering part numbers listed in the datasheet for ordering.



THIS SPEC IS OBSOLETE

Spec No: 002-05127

Spec Title: AN205127 -F2MC-8FX Family MB95410H/470H
Series 8-Bit Microcontroller One Phase Power
Meter (RN8209) Solution Display Operation

Replaced by: NONE

F²MC-8FX Family MB95410H/470H Series 8-Bit Microcontroller One Phase Power Meter (RN8209) Solution Display Operation

Associated Part Family: MB95410H/470H Series

This application note describes how to use One Phase Power Meter (RN8209) solution's display function.

1 Introduction

This application note describes how to use One Phase Power Meter (RN8209) solution's display function.

Section 2 explains the Background.

Section 3 explains the HW Diagram.

Section 4 explains the HW Reference SCH.

Section 5 explains the FW Diagram.

Section 6 explains the FW Function List.

2 Background

Background of display Function

2.1 Overview

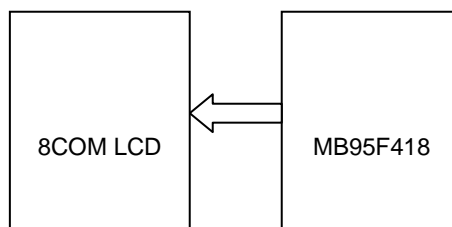
On the power meter box, there are 2 keys, display key and program key. The system's default display mode is auto roll displaying, and each display page delay for 5 seconds. When you put down the display key, display mode will change to manual roll displaying. And if you don't put down the display key for 30 seconds, display mode will change to auto roll displaying again.

3 HW Diagram

Hardware diagram of display unit

3.1 HW Diagram of Display Unit

Figure 1. Hardware diagram



4 HW Reference SCH

Hardware reference SCH of display unit

Figure 2. 8COM LCD Interface

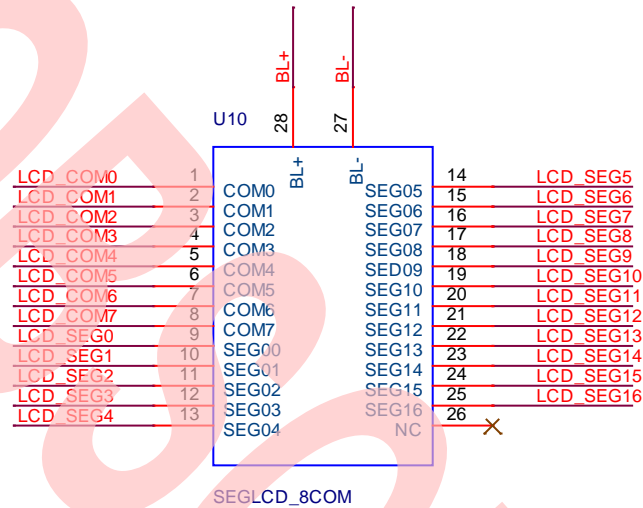
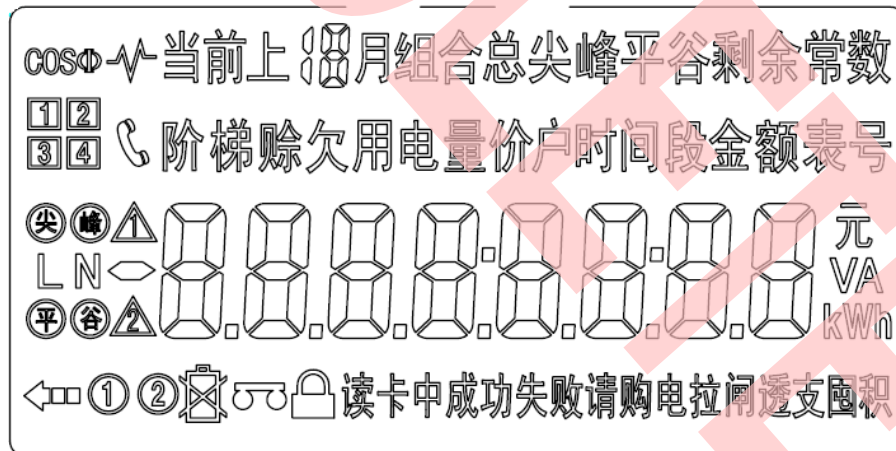


Figure 3. 8COM LCD Module

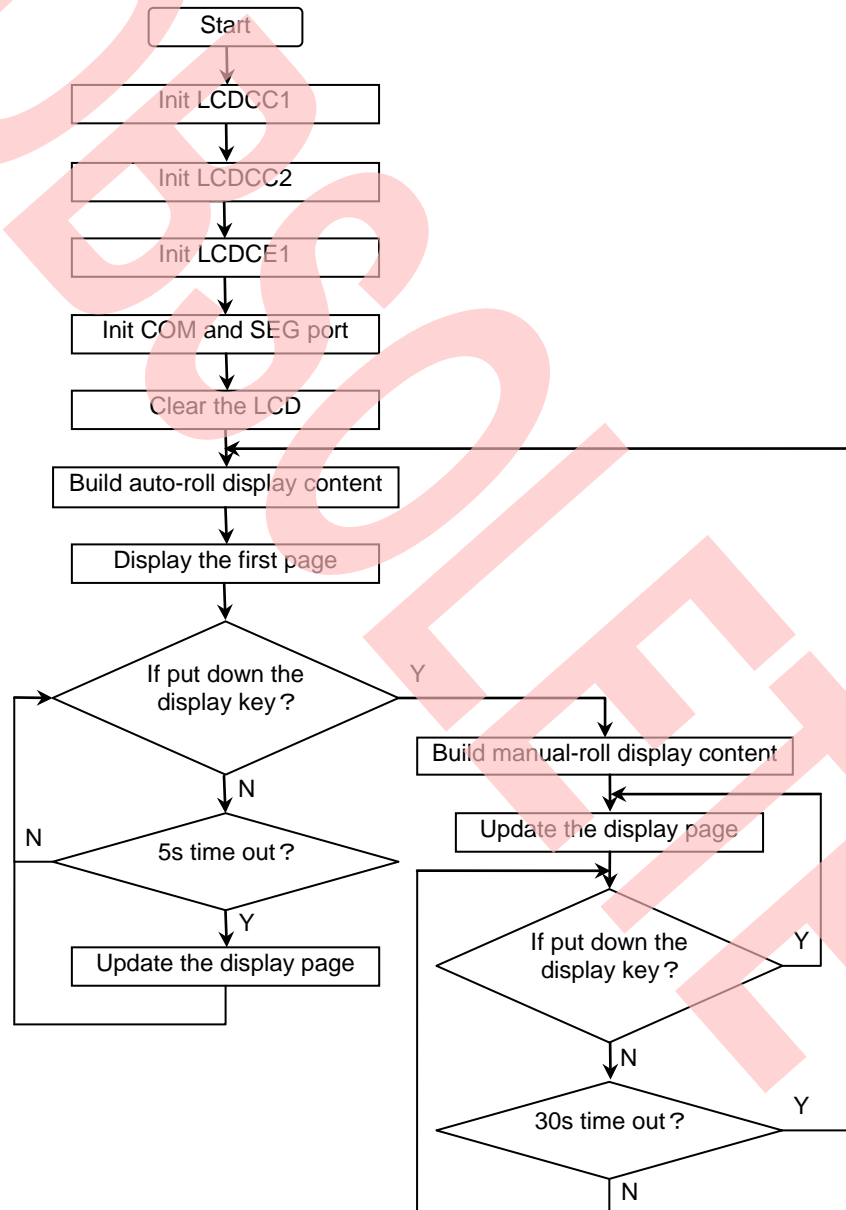


5 FW Diagram

Firmware system diagram

5.1 Firmware System Diagram

Figure 4. Firmware System Diagram



6 FW Function List

6.1 API

Table 1. FW API List

Function Prototype	Description
void Lcd_Init(void)	LCD module initialization
void LoadLcdPara(INT8U* lcdPara)	Load LCD display parameters from EEPROM
void LcdPowerCtl(INT8U pwrNmI)	LCD power on/save control
void LcdPageDisplay(void)	Display various data page on LCD screen
void LcdPageManual(INT8U pageSet)	Manual change LCD page
void LcdPageChange(INT8U pageSet)	LCD screen page up/down control
void* FindPageDispThread(INT8U* targetId)	Find page display thread using data ID
void BuildPowerUpLcdPage(void)	Build Power-up LCD page content
void BuildAutoRollLcdPage(void)	Build auto-rolling LCD page content
void BuildManlRollLcdPage(void)	Build manual-rolling LCD page list
void BuildPowerDnLcdPage(void)	Build power-down LCD page content
void LcdParaReloadEnable(void)	Enable LCD parameter reload using system reset
void DispSegmentEnergy(INT8U pageMode, INT8U monthId, INT8U dispSegId)	Display segment energy
void DispPrepayBalance(INT8U pageMode)	Display prepay balance
void DispCurrentTarrifRate(INT8U pageMode)	Display current tariff rate
void DispUserNumLow8b(INT8U pageMode)	Display user number low 8 bit
void DispUserNumHigh4b(INT8U pageMode)	Display user number high 8 bit
void DispMeterNumLow8b(INT8U pageMode)	Display meter number low 8 bit
void DispMeterNumHigh4b(INT8U pageMode)	Display meter number high 8 bit
void DispErrorNum(INT8U pageMode)	Display error number
void DispVoltage(INT8U pageMode)	Display voltage
void DispLoadCurrent(INT8U pageMode)	Display load current
void DispNeutralCurrent(INT8U pageMode)	Display neutral current
void DispPower(INT8U pageMode)	Display power
void DispPowerFactor(INT8U pageMode)	Display power factor
void DispCurrentDate(INT8U pageMode)	Display current date
void DispCurrentTime(INT8U pageMode)	Display current time

6.2 HAL

Table 2. FW HAL List

Function Prototype	Description
void LcdCardCommDisp(INT8U value)	
void LcdEnergyPurchaseDisp(INT8U onOff)	
void LcdEnergyPurchaseDisp(INT8U onOff)	
void BcdCount2LcdDigit(INT8U *bcdCount, INT8U *lcdDigit)	Convert 4 bytes of BCD string to 8 digits of LCD display data string
void LcdMainLineDisp(INT8U* dataStr)	Display main line on LCD screen
void LcdDigitDisp(INT8U digitId, INT8U digitCode)	Display a digit on LCD screen
void LcdColonDisp(INT8U colonTag)	Display colon on LCD screen
void LcdDotDisp(INT8U dpTag)	Display dot-point on LCD screen
void LcdLedTimeSegId(INT8U segId)	Display tariff time-seg LED id
void LcdTxtTimeSegId(INT8U segId)	Display time-seg text id
void LcdDateTimeDisp(INT8U dtState)	Display date/time text
void LcdLastMonthDisp(INT8U month)	Display month
void LcdBattDisp(INT8U battState)	Set LCD battery Display On/Off
void LcdCommDisp(INT8U ch, INT8U commState)	Set LCD Comm Display On/Off
void LcdProgramDisp(INT8U programState)	Set LCD programmable sign Display On/Off
void LcdLockDisp(INT8U lockState)	Set LCD Lock Display On/Off
void LcdKwhDisp(INT8U kwhState)	Set LCD KWh Display On/Off
void LcdKwDisp(INT8U kwState)	Set LCD KW Display On/Off
void LcdRmbDisp(INT8U rmbState)	Set LCD RMB Display On/Off
void LcdEnergyDirDisp(void)	Display Energy direction
INT8U LcdRemoveHeading0(INT8U *buff, INT8U ptPos)	Remove useless heading zero for main display line
void LcdNegativeSignDisp(INT8U onOff)	Set negative sign Display On/Off
void LcdCosineSignDisp(INT8U onOff)	Set cosine sign Display On/Off
void LcdDatSend(INT8U* dispDat, INT8U size)c	Send a string of display data to LCD controller module

7 Additional Information

For more information on Cypress products, please visit the following website:

<http://www.cypress.com/cypress-microcontrollers>

OBsolete

Document History

Document Title: AN205127 – F2MC-8FX Family MB95410H/470H Series 8-Bit Microcontroller One Phase Power Meter (RN8209) Solution Display Operation

Document Number: 002-05127

Revision	ECN	Orig. of Change	Submission Date	Description of Change
**	-	HUAL	06/01/2011	Initial release
*A	5257281	HUAL	05/20/2016	Migrated Spansion Application Note MCU-AN-500111-E-10 to Cypress format. Document obsoleted.

Worldwide Sales and Design Support

Cypress maintains a worldwide network of offices, solution centers, manufacturer's representatives, and distributors. To find the office closest to you, visit us at [Cypress Locations](#).

Products

ARM® Cortex® Microcontrollers	cypress.com/arm
Automotive	cypress.com/automotive
Clocks & Buffers	cypress.com/clocks
Interface	cypress.com/interface
Lighting & Power Control	cypress.com/powerpsoc
Memory	cypress.com/memory
PSoC	cypress.com/psoc
Touch Sensing	cypress.com/touch
USB Controllers	cypress.com/usb
Wireless/RF	cypress.com/wireless

PSoC® Solutions

[PSoC 1](#) | [PSoC 3](#) | [PSoC 4](#) | [PSoC 5LP](#)

Cypress Developer Community

[Forums](#) | [Projects](#) | [Videos](#) | [Blogs](#) | [Training](#) | [Components](#)

Technical Support

cypress.com/support

PSoC is a registered trademark and PSoC Creator is a trademark of Cypress Semiconductor Corporation. All other trademarks or registered trademarks referenced herein are the property of their respective owners.

 <p>CYPRESS Embedded in Tomorrow™</p>	<p>Cypress Semiconductor 198 Champion Court San Jose, CA 95134-1709</p>	<p>Phone : 408-943-2600 Fax : 408-943-4730 Website : www.cypress.com</p>
---	---	---

© Cypress Semiconductor Corporation, 2011-2016. This document is the property of Cypress Semiconductor Corporation and its subsidiaries, including Spansion LLC ("Cypress"). This document, including any software or firmware included or referenced in this document ("Software"), is owned by Cypress under the intellectual property laws and treaties of the United States and other countries worldwide. Cypress reserves all rights under such laws and treaties and does not, except as specifically stated in this paragraph, grant any license under its patents, copyrights, trademarks, or other intellectual property rights. If the Software is not accompanied by a license agreement and you do not otherwise have a written agreement with Cypress governing the use of the Software, then Cypress hereby grants you a personal, non-exclusive, nontransferable license (without the right to sublicense) (1) under its copyright rights in the Software (a) for Software provided in source code form, to modify and reproduce the Software solely for use with Cypress hardware products, only internally within your organization, and (b) to distribute the Software in binary code form externally to end users (either directly or indirectly through resellers and distributors), solely for use on Cypress hardware product units, and (2) under those claims of Cypress's patents that are infringed by the Software (as provided by Cypress, unmodified) to make, use, distribute, and import the Software solely for use with Cypress hardware products. Any other use, reproduction, modification, translation, or compilation of the Software is prohibited.

TO THE EXTENT PERMITTED BY APPLICABLE LAW, CYPRESS MAKES NO WARRANTY OF ANY KIND, EXPRESS OR IMPLIED, WITH REGARD TO THIS DOCUMENT OR ANY SOFTWARE OR ACCOMPANYING HARDWARE, INCLUDING, BUT NOT LIMITED TO, THE IMPLIED WARRANTIES OF MERCHANTABILITY AND FITNESS FOR A PARTICULAR PURPOSE. To the extent permitted by applicable law, Cypress reserves the right to make changes to this document without further notice. Cypress does not assume any liability arising out of the application or use of any product or circuit described in this document. Any information provided in this document, including any sample design information or programming code, is provided only for reference purposes. It is the responsibility of the user of this document to properly design, program, and test the functionality and safety of any application made of this information and any resulting product. Cypress products are not designed, intended, or authorized for use as critical components in systems designed or intended for the operation of weapons, weapons systems, nuclear installations, life-support devices or systems, other medical devices or systems (including resuscitation equipment and surgical implants), pollution control or hazardous substances management, or other uses where the failure of the device or system could cause personal injury, death, or property damage ("Unintended Uses"). A critical component is any component of a device or system whose failure to perform can be reasonably expected to cause the failure of the device or system, or to affect its safety or effectiveness. Cypress is not liable, in whole or in part, and you shall and hereby do release Cypress from any claim, damage, or other liability arising from or related to all Unintended Uses of Cypress products. You shall indemnify and hold Cypress harmless from and against all claims, costs, damages, and other liabilities, including claims for personal injury or death, arising from or related to any Unintended Uses of Cypress products.

Cypress, the Cypress logo, Spansion, the Spansion logo, and combinations thereof, PSoC, CapSense, EZ-USB, F-RAM, and Traveo are trademarks or registered trademarks of Cypress in the United States and other countries. For a more complete list of Cypress trademarks, visit cypress.com. Other names and brands may be claimed as property of their respective owners.