



**Please note that Cypress is an Infineon Technologies Company.**

The document following this cover page is marked as “Cypress” document as this is the company that originally developed the product. Please note that Infineon will continue to offer the product to new and existing customers as part of the Infineon product portfolio.

**Continuity of document content**

The fact that Infineon offers the following product as part of the Infineon product portfolio does not lead to any changes to this document. Future revisions will occur when appropriate, and any changes will be set out on the document history page.

**Continuity of ordering part numbers**

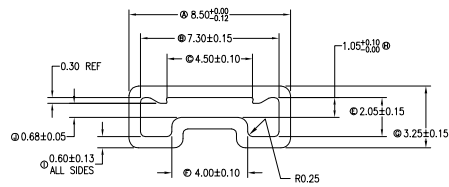
Infineon continues to support existing part numbers. Please continue to use the ordering part numbers listed in the datasheet for ordering.

REVISIONS

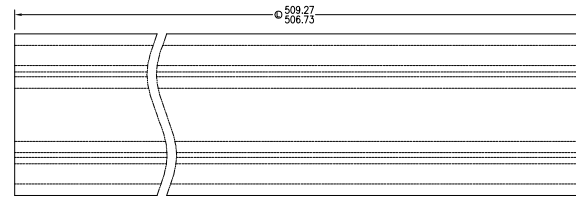
PAGE	ZONE	REV	ECN	DESCRIPTION	DATE	APPROVED
1	-	**	117328	NEW RELEASE	07/16/02	
1	-	*A	125678	Corrected length from 530± 1.27 to 508±2	03/24/03	
1	-	*B	133886	Add slotted tube drawing Add note number 4 Insert Red "slotted tube" and Black "slotted tube" in the table.	03/26/04	
1	-	*C	3285739	UPDATED DRAWING CHANGE DRAWING TEMPLATE	06/29/11	
1	-	*D	3326860	CORRECTED GENERAL TOLERANCE FROM ±0.020[0.51] TO ±0.15 CORRECTED OVER ALL LENGTH FROM 508.00±2 TO 508.00±1.27 CHANGE TOLERANCE OF RIB HEIGHT FROM ±0.05 TO "REF"	08/08/11	
1	-	*E	3791200	UPDATE TUBE TYPE TABLE VS. CY PART #. UPDATE LINE ITEM # 2 FROM PRINT TO BAR AND REMOVE LINE ITEM, 1, 4, 5, 6, & 7.	10/23/12	
1	-	*F	4447569	UPDATE DRAWING TEMPLATE	07/18/14	

NOTES:

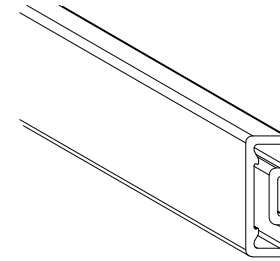
1. ALL TUBE TOLERANCES TO BE ±0.15 UNLESS OTHERWISE SPECIFIED.
2. ALL RADII AND ANGLES REFERENCE ONLY, UNLESS OTHERWISE SPECIFIED.
3. STRAIGHTNESS TIR 0.030" MAX.
4. TUBE PART NUMBER WITH SLOT: ZTB8-R, ZTB8-BL



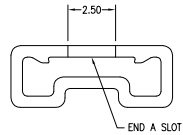
RIGHT SIDE VIEW (WITHOUT SLOT)



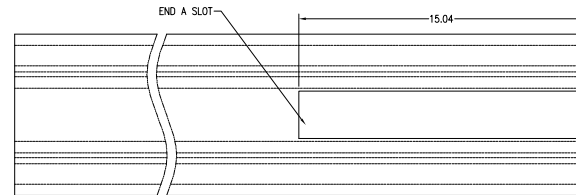
TOP VIEW (WITHOUT SLOT)



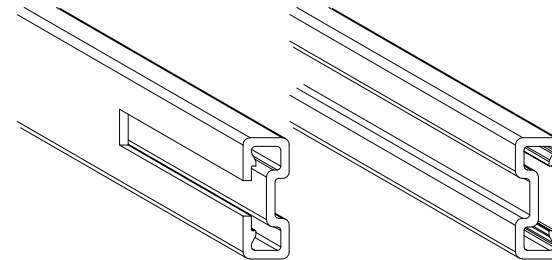
PERSPECTIVE (WITHOUT SLOT)



RED/BLACK SLOTTED TUBE RIGHT SIDE VIEW



RED/BLACK SLOTTED TUBE TOP VIEW



END B

END A

RED/BLACK SLOTTED TUBE PERSPECTIVE

TUBE TYPE	CY PART #
CLEAR WITH BLUE PRINT	ZTB8-CB
CLEAR WITH GREEN BAR	ZTB8-G
RED SLOTTED TUBE WITH BLUE PRINT	ZTB8-R

UNLESS OTHERWISE SPECIFIED		DESIGNED BY	DATE	
ALL DIMENSIONS ARE IN MILLIMETERS STANDARD TOLERANCES ON: DECIMALS ± 0.10 .XX ± 0.10 .XXX ± 0.100 .XXXX ± 0.1000 ANGLES ± 1.0		DRAWN <b>XVC</b>	DATE <b>07/18/14</b>	
MATERIAL <b>SEE NOTE</b>		CHK BY <b>ECVI</b>	DATE <b>07/18/14</b>	TITLE <b>8LD TSSOP (173 MILS) SHIPPING TUBE</b>
		APPROVED BY <b>QAD</b>	DATE <b>07/18/14</b>	SIZE <b>A</b>
FINISH <b>SEE NOTE</b>		APPROVED BY <b>UYO</b>	DATE <b>07/18/14</b>	PART NO. <b>ZTB8-*</b>
				DWG NO <b>51-51157</b>
				REV <b>*F</b>
				DO NOT SCALE
				SHEET 1 OF 1