

**Please note that Cypress is an Infineon Technologies Company.**

The document following this cover page is marked as “Cypress” document as this is the company that originally developed the product. Please note that Infineon will continue to offer the product to new and existing customers as part of the Infineon product portfolio.

**Continuity of document content**

The fact that Infineon offers the following product as part of the Infineon product portfolio does not lead to any changes to this document. Future revisions will occur when appropriate, and any changes will be set out on the document history page.

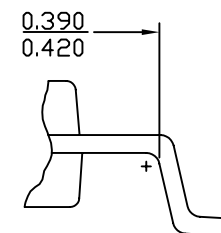
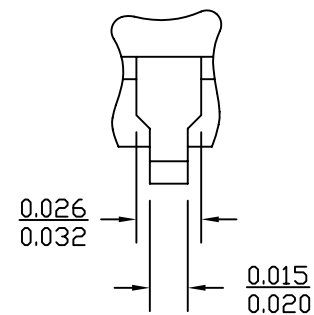
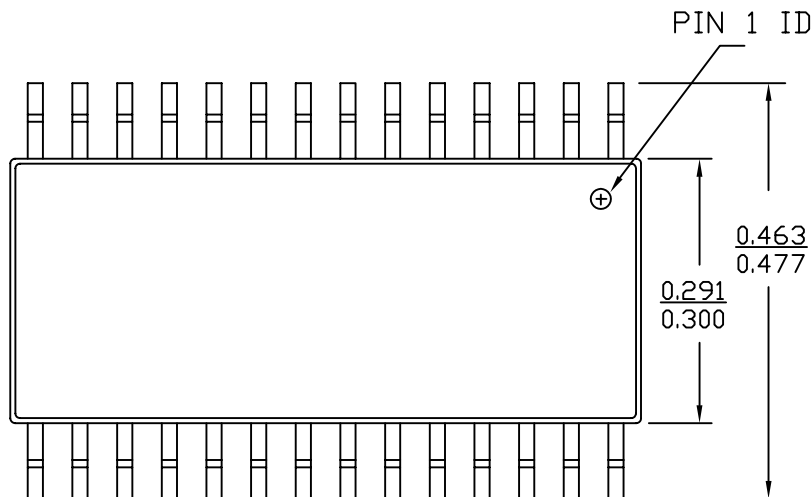
**Continuity of ordering part numbers**

Infineon continues to support existing part numbers. Please continue to use the ordering part numbers listed in the datasheet for ordering.

REVISIONS						
PAGE	ZONE	REV	ECN	DESCRIPTION	DATE	APPROVED
1	-	**	49915	NEW RELEASE	04/22/97	N/A
1	-	*A	64073	ADD DETAIL "A"	09/01/99	N/A
1	-	*B	114933	ADD NEW DIMENSION 0.390/0.420	04/14/02	N/A
1	-	*C	2830180	Changed Template and Title from 28LD (300 MIL) SNC PACKAGE OUTLINE (NARROW BODY) to PACKAGE OUTLINE, 28LD SNC 300 MILS SN28.3 (NARROW BODY).	12/18/09	QAD
1	4B,5B	*D	3342545	Removed OMEDATA Dimensions and CSPI annotation in DETAIL "A"	08/11/11	FMN
1	-	*E	3726137	Sunset Review, Added Package Weight - Refer to PMDD spec.	08/28/12	QAD

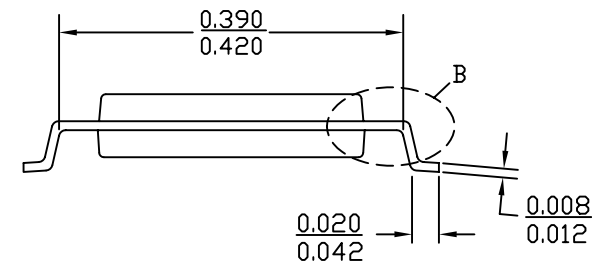
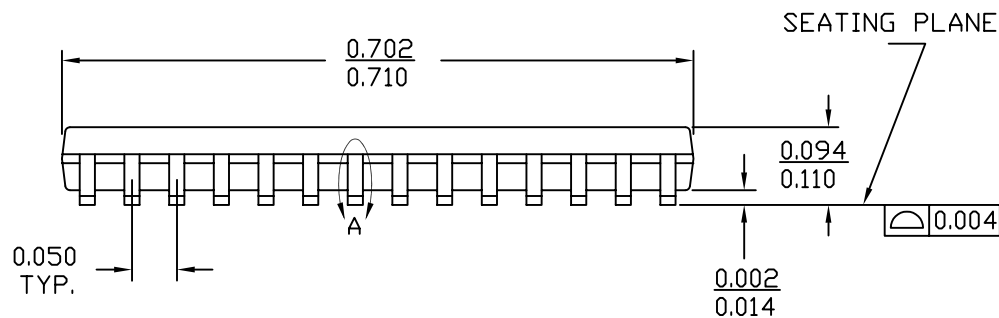
# SNC 28.300 WITH NARROW BODY

DIMENSIONS IN INCHES MIN.  
MAX.  
Package Weight - Refer to PMDD spec.




DETAIL "A"

DETAIL "B"



THIS DRAWING CONTAINS INFORMATION WHICH IS THE PROPRIETARY PROPERTY OF CYPRESS SEMICONDUCTOR CORPORATION. THIS DRAWING IS RECEIVED IN CONFIDENCE AND ITS CONTENTS MAY NOT BE DISCLOSED WITHOUT WRITTEN CONSENT OF CYPRESS SEMICONDUCTOR CORPORATION.

UNLESS OTHERWISE SPECIFIED ALL DIMENSIONS ARE IN MILLIMETERS STANDARD TOLERANCES ON:		DESIGNED BY	DATE	 <b>CYPRESS</b> Company Confidential	
		DRAWN BY	DATE		
		CHECKED BY	DATE		
		APPROVED BY	DATE		
DECIMALS	ANGLES	EDCA	DATE	TITLE	
.XX ± 0.05	± 1°	QAD	DATE		
.XXX ±		EDCA	DATE	PACKAGE OUTLINE, 28LD SNC 300 MILS SN28.3 (NARROW BODY)	
.XXXX ±		QAD	DATE		
MATERIAL	N/A	APPROVED BY	DATE	SIZE	PART NO.
FINISH	N/A	QAD	DATE	A	SN28.3
		APPROVED BY	DATE	SCALED TO FIT	DWG NO
		N/A	N/A	N/A	51-85092
					REV
					*E
					SHEET 1 OF 1