



**Please note that Cypress is an Infineon Technologies Company.**

The document following this cover page is marked as “Cypress” document as this is the company that originally developed the product. Please note that Infineon will continue to offer the product to new and existing customers as part of the Infineon product portfolio.

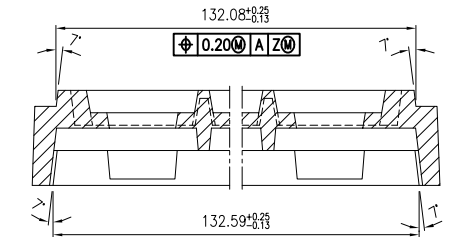
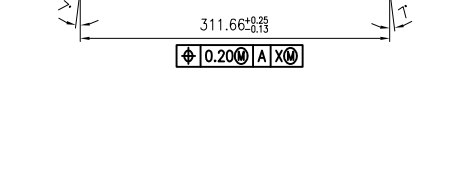
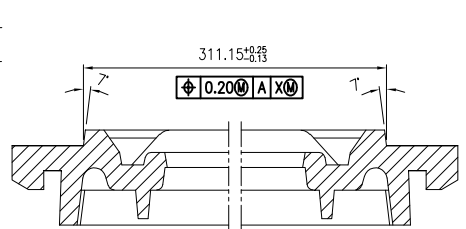
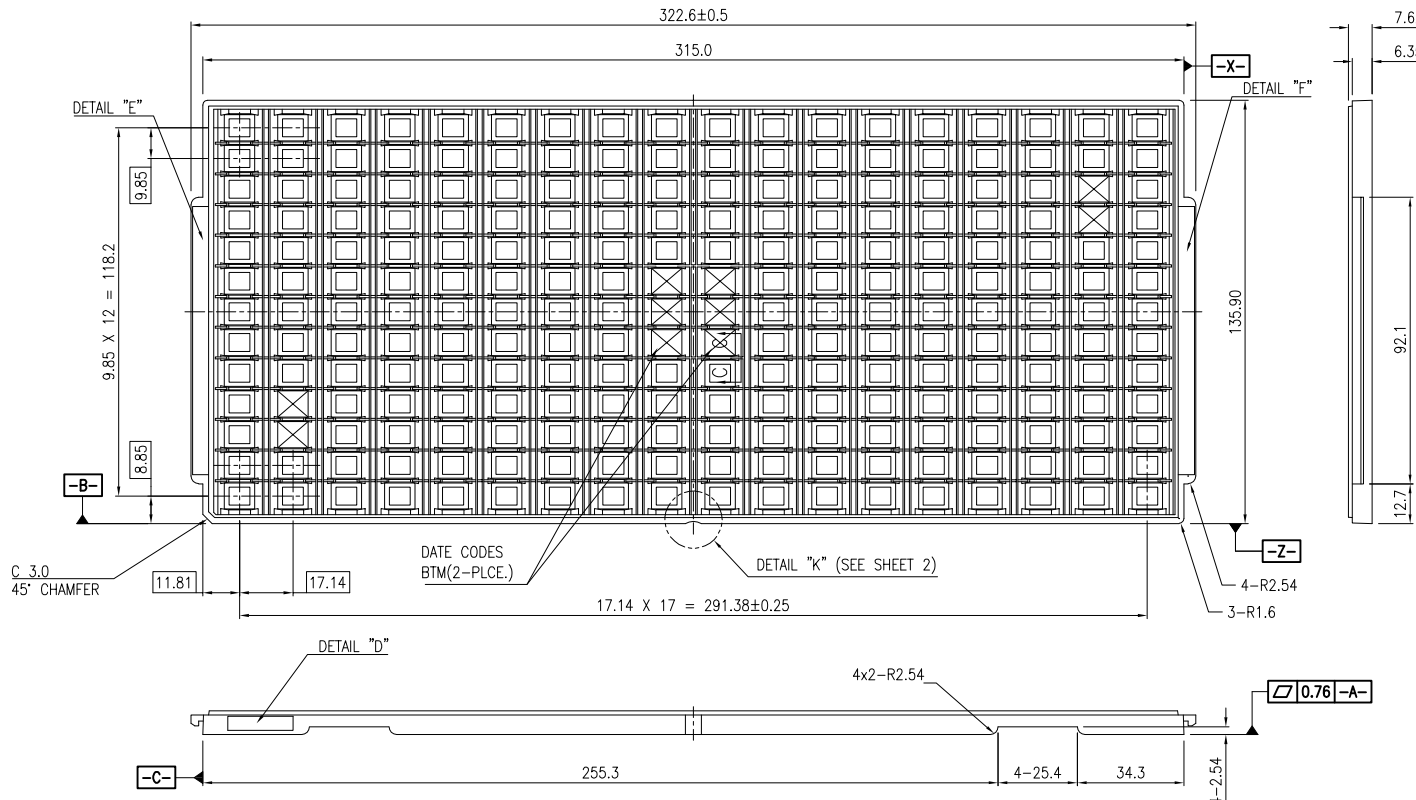
**Continuity of document content**

The fact that Infineon offers the following product as part of the Infineon product portfolio does not lead to any changes to this document. Future revisions will occur when appropriate, and any changes will be set out on the document history page.

**Continuity of ordering part numbers**

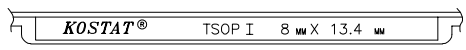
Infineon continues to support existing part numbers. Please continue to use the ordering part numbers listed in the datasheet for ordering.

| REVISIONS |       |     |         |   |          |          |
|-----------|-------|-----|---------|---|----------|----------|
| PAGE      | ZONE  | REV | ECN     | DESCRIPTION   | DATE     | APPROVED |
| 1         | -     | **  | 47385   | NEW RELEASE   | 11/25/96 |          |
| ALL       | -     | *A  | 3125913 | UPDATE DRAWING BASED ON SUPPLIER'S LATEST DRAWING<br>ADDED TABLE FOR MATERIAL PROPERTIES<br>CORRECTED SUPPLIER P/N FROM KS-8407 TO KS-8427<br>CHANGE DRAWING TEMPLATE | 01/19/11 |          |
| ALL       | -     | *B  | 3189586 | CHANGE PART NO. FROM T28134K TO T28134-*  | 03/07/11 |          |
| ALL       | -     | *C  | 3532453 | REMOVE LAYER COLORS ON PDF FILE.  | 02/23/12 |          |
| ALL       | -     | *D  | 3824860 | UPDATED BOTTOM POCKET DESIGN. ADDED PAGE 3 FOR BOTTOM VIEW.   | 11/29/12 |          |
| ALL       | -     | *E  | 4692739 | CHANGE DRAWING TEMPLATE   | 03/18/15 |          |
| 1         | C2,D5 | *F  | 6931982 | UPDATE PART NO. FROM KS-8427 TO KS-84029  | 07/22/20 |          |



TRAY STACKING DETAIL  
(SCALE:4/1)

TSOP I 8 MM X 13.4 MM  
KS - 84029



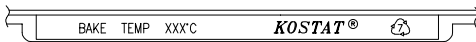
DETAIL E  
(SCALE:2/1)



DETAIL D  
(SCALE:2/1)



DATE DETAIL  
(SCALE:2/1)



DETAIL F  
(SCALE:2/1)

| DESCRIPTION  | MATERIAL | COLOR    | TEMP °C       | E S D  |
|--------------|----------|----------|---------------|--|
| NON-BAKEABLE | ABS      | BLUE,RED | 50 °C         | 10 <sup>10</sup> TO 10 <sup>12</sup> ohm/SQ. |
| BAKEABLE     | KS-6120  | BLACK    | 140 °C,150 °C | 10 <sup>8</sup> TO 10 <sup>11</sup> ohm/SQ.  |
| BAKEABLE     | KS-6110  | BLACK    | 150 °C        | 10 <sup>8</sup> TO 10 <sup>11</sup> ohm/SQ.  |
| BAKEABLE     | KS-6100  | BLACK    | 180 °C        | 10 <sup>8</sup> TO 10 <sup>11</sup> ohm/SQ.  |

\*SUPPLIER P/N: KS-84029

|  |              |              |
|--|--------------|--------------|
| UNLESS OTHERWISE SPECIFIED<br>ALL DIMENSIONS ARE IN MILLIMETERS<br>STANDARD TOLERANCES ON: | DESIGNED BY  | DATE         |
|  | DEFAULT TEXT | DEFAULT TEXT |
|  | DRAWN BY     | DATE         |
|  | KWTE         | 07/22/20     |
| DECIMALS   | CHECKED BY   | DATE         |
|  | ECVI         | 07/22/20     |
| ANGLES   | APPROVED BY  | DATE         |
|  | LKSU         | 07/22/20     |
| .X ± 0.25<br>.XX ± 0.13<br>.XXX ± 0.13   | APPROVED BY  | DATE         |
|  | MKCC         | 07/22/20     |
| MATERIAL   | APPROVED BY  | DATE         |
|  | SEE NOTE     | DEFAULT TEXT |
| FINISH   | APPROVED BY  | DATE         |
|  | SEE NOTE     | DEFAULT TEXT |

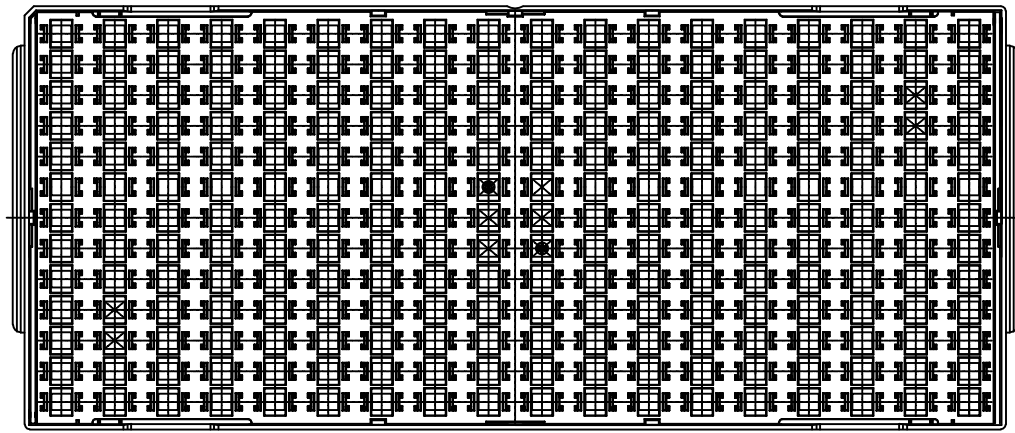
**CYPRESS**  
Company Confidential

TITLE: 28LD TSOP TRAY 8 X 13.4MM (KOSTAT)

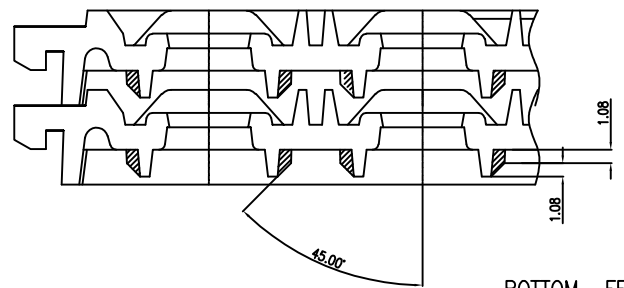
|      |          |          |     |
|------|----------|----------|-----|
| SIZE | PART NO. | DWG NO   | REV |
| A    | TZ8134-* | 51-52025 | *F  |

SCALED TO FIT    ENG'G REV    SHEET 1 OF 3

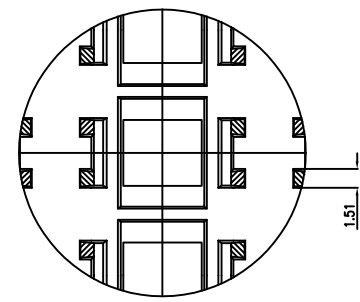
THIS DRAWING CONTAINS INFORMATION WHICH IS THE PROPRIETARY PROPERTY OF CYPRESS SEMICONDUCTOR CORPORATION. THIS DRAWING IS RECEIVED IN CONFIDENCE AND ITS CONTENTS MAY NOT BE DISCLOSED WITHOUT WRITTEN CONSENT OF CYPRESS SEMICONDUCTOR CORPORATION.



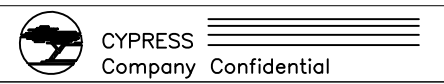
BOTTOM VIEW  
(SCALE:1/1)



BOTTOM FENCE SUPPORT  
(SCALE:4/1)

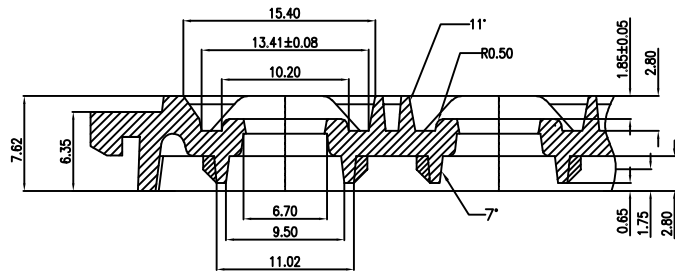


THIS DRAWING CONTAINS INFORMATION WHICH IS THE PROPRIETARY PROPERTY OF CYPRESS SEMICONDUCTOR CORPORATION. THIS DRAWING IS RECEIVED IN CONFIDENCE AND ITS CONTENTS MAY NOT BE DISCLOSED WITHOUT WRITTEN CONSENT OF CYPRESS SEMICONDUCTOR CORPORATION.

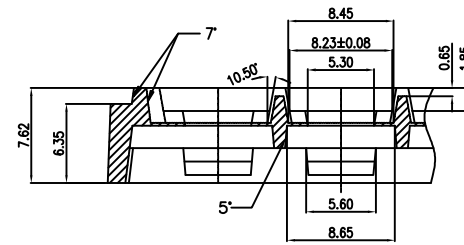


TITLE  
28LD TSOP TRAY 8 X 13.4MM (KOSTAT)

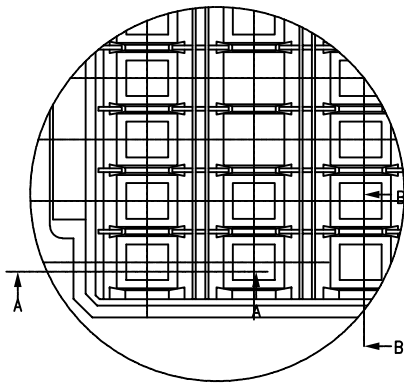
|               |                      |                    |              |
|---------------|----------------------|--------------------|--------------|
| SIZE<br>A     | PART NO.<br>TZ8134-* | DWG NO<br>51-52025 | REV<br>*F    |
| SCALED TO FIT |                      | ENG'G REV          | SHEET 2 OF 3 |



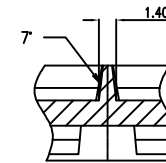
SECTION A-A  
(SCALE:4/1)



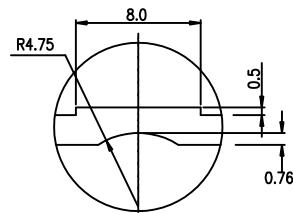
SECTION B-B  
(SCALE:4/1)



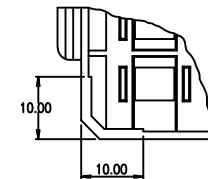
TOP VIEW  
(SCALE:2/1)



SLIP LOCK  
(SCALE:4/1)



BOTTOM VIEW K  
SCALE = 5 / 1



STACKING DETAIL  
(SCALE:2/1)

THIS DRAWING CONTAINS INFORMATION WHICH IS THE PROPRIETARY PROPERTY OF CYPRESS SEMICONDUCTOR CORPORATION. THIS DRAWING IS RECEIVED IN CONFIDENCE AND ITS CONTENTS MAY NOT BE DISCLOSED WITHOUT WRITTEN CONSENT OF CYPRESS SEMICONDUCTOR CORPORATION.



TITLE  
28LD TSOP TRAY 8 X 13.4MM (KOSTAT)

|               |                      |                    |              |
|---------------|----------------------|--------------------|--------------|
| SIZE<br>A     | PART NO.<br>TZ8134-* | DWG NO<br>51-52025 | REV<br>*F    |
| SCALED TO FIT |                      | ENG'G REV          | SHEET 3 OF 3 |