

XE166 Family

AP16160

XE164 DriveCard Hardware Description
Board REV.2008/14

Application Note

V1.0, 2009-03

Edition 2009-03

**Published by
Infineon Technologies AG
81726 Munich, Germany**

**© 2009 Infineon Technologies AG
All Rights Reserved.**

LEGAL DISCLAIMER

THE INFORMATION GIVEN IN THIS APPLICATION NOTE IS GIVEN AS A HINT FOR THE IMPLEMENTATION OF THE INFINEON TECHNOLOGIES COMPONENT ONLY AND SHALL NOT BE REGARDED AS ANY DESCRIPTION OR WARRANTY OF A CERTAIN FUNCTIONALITY, CONDITION OR QUALITY OF THE INFINEON TECHNOLOGIES COMPONENT. THE RECIPIENT OF THIS APPLICATION NOTE MUST VERIFY ANY FUNCTION DESCRIBED HEREIN IN THE REAL APPLICATION. INFINEON TECHNOLOGIES HEREBY DISCLAIMS ANY AND ALL WARRANTIES AND LIABILITIES OF ANY KIND (INCLUDING WITHOUT LIMITATION WARRANTIES OF NON-INFRINGEMENT OF INTELLECTUAL PROPERTY RIGHTS OF ANY THIRD PARTY) WITH RESPECT TO ANY AND ALL INFORMATION GIVEN IN THIS APPLICATION NOTE.

Information

For further information on technology, delivery terms and conditions and prices, please contact the nearest Infineon Technologies Office (www.infineon.com).

Warnings

Due to technical requirements, components may contain dangerous substances. For information on the types in question, please contact the nearest Infineon Technologies Office.

Infineon Technologies components may be used in life-support devices or systems only with the express written approval of Infineon Technologies, if a failure of such components can reasonably be expected to cause the failure of that life-support device or system or to affect the safety or effectiveness of that device or system. Life support devices or systems are intended to be implanted in the human body or to support and/or maintain and sustain and/or protect human life. If they fail, it is reasonable to assume that the health of the user or other persons may be endangered.

Device1**Revision History: V1.0 2009-03**

Previous Version(s):

Page	Subjects (major changes since last revision)
–	This is the first release ...

Trademarks

TriCore® is a trademark of Infineon Technologies AG.

We Listen to Your Comments

Is there any information in this document that you feel is wrong, unclear or missing? Your feedback will help us to continuously improve the quality of this document. Please send your proposal (including a reference to this document) to:

mcdocu.comments@infineon.com

Table of Contents

1	Introduction - XE166 family	5
2	Overview	6
2.1	Drive Card Setup	7
3	Hardware Description	8
3.1	Power Supply	8
3.2	XE164	8
3.3	User Interface	9
3.4	Digitally Isolated Debug Interface (JTAG, UART and CAN)	9
3.5	Inverter Board Connection	10
3.6	Hall Sensor Interfaces	11
3.7	USIC Interface	11
3.8	Encoder Interface	12
4	PCB Layout	13

1 Introduction - XE166 family

XE166 family - More performance, more Flash, better peripherals

With more than 15 successful years in the microcontroller market place, C166 has set the standard for 16-bit architectures with the highest aggregate volume share of all available 16-bit devices. With its fast interrupt response and context switching, the C166 family is ideally suited for automotive, industrial, mass storage and wired as well as wireless communications applications. Compared with the XC166, XE166 delivers more performance, more Flash memory, more RAM, strongly enhanced peripherals and a complete DSP library.

MCU and DSP in a core

Infineon Technologies Real Time Signal Controller combines the traditional strengths of a Microcontroller Unit (MCU) to control peripherals with the computing power of Digital Signal Processors (DSP). All in one enhanced XE166 core. Together, the Microcontroller's real-time capability and ease of use and the DSP's mathematical performance and data throughput form a powerful single-chip solution ideal for many embedded applications.

For detailed technical information about the different derivatives please refer to the XE166 family web pages on the Infineon Internet.

<http://www.infineon.com/XE166>

2 Overview

The XE164 DriveCard was designed to be used in motor control systems. It provides all signals necessary to drive a power inverter including feedback signals.

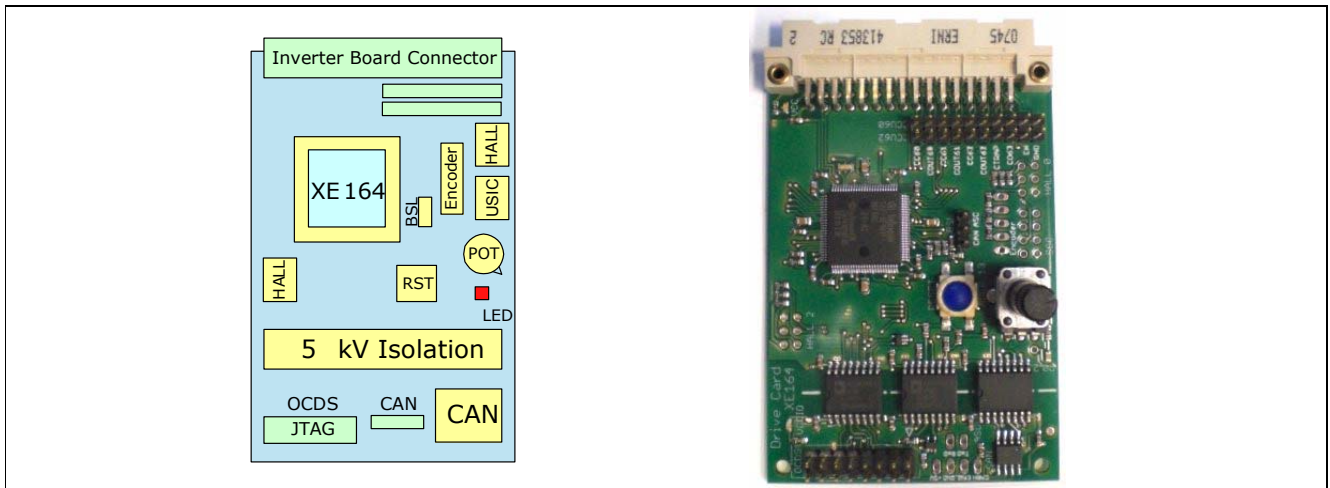


Figure 1 XE164 DriveCard

This DriveCard, featuring the cost-effective 16-bit microcontroller XE164 with 32-bit motor control performance, provides following interfaces:

- USIC ASC/SSC/IIC: A synchronous serial interface like SPI, UART interface or IIC
- 2 x HALL: The hall interface can be used to directly connect hall sensors of a motor
- Digital isolated JTAG: Programming and debugging interface
- Digital isolated CAN: Controller Area Network e.g. for real-time monitoring and parameter setup
- Digital isolated UART: e.g. for real-time monitoring and parameter setup
- User interface: A POT and a LED can be used as user interface in stand alone operation

The inverter board connector provides the following signals:

- 2 x Six PWM channels for 3-phase motor control (CAPCOM6E)
- 2 x Shut down signal for PWM channels (CTRAP)
- 2 x Enable signal for power inverter
- Twelve ADC channels for fast analog signals such as DC-link current and phase voltages, as well as slow signals such as temperatures.
- Signals for brake chopper and PFC
- The power supply (5 V) for the drive card

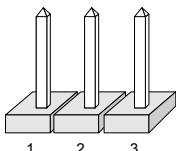
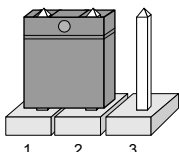
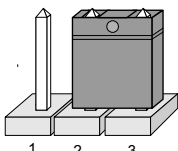
2.1 Drive Card Setup

Although most of the programmable features of the XE166 are selected by software either during the initialization phase or repeatedly during program execution, some features must be selected earlier because they are used for the first access of the program execution.

These configurations are accomplished by latching the logic levels at a number of pins at the end of the internal reset sequence.

Jumper 8 is used to configure the startup setting of the XE166 during RESET. The default System Startup Configuration is shown in Table 1 below. All Jumper positions are OFF. The XE166 executes a standard start from internal Flash.

Table 1 Startup configuration

Name in schematic	Default configuration	Description
JP8		Startup configuration: Standard start from internal Flash (Default)
JP8		Startup configuration: Standard UART Bootloader mode <i>Note: For details about the UART Bootloader refer to the User Manual System Units.</i>
JP8		Startup configuration: CAN Bootloader mode <i>Note: For details about the CAN Bootloader refer to the User Manual System Units.</i>

Note: For debugging purposes (OCDS) the standard start from internal Flash configuration must be used.

3 Hardware Description

3.1 Power Supply

The XE164 DriveCard is supplied by two power supply domains. The main supply (VCC) is fed from the inverter board connector (see [Chapter 3.5](#)) and is connected to the MCU and all associated blocks. A second supply domain (VCCIO) exists for the digital isolation and the CAN transceiver. This can be provided via the CAN or the JTAG connector. Please refer to [Chapter 3.4](#) for details. Two LEDs indicate the presence of these supply voltages.

3.2 XE164

The XE164 microcontroller is directly connected to dedicated interfaces. Next to the integrated current trimmed oscillator, an external resonator with 8 Mhz is available. A software download can be performed via JTAG, UART or CAN. For a UART or CAN download, the dedicated BSL (Boot Strap Loader) has to be set (see [Chapter 2.1](#)). For normal operation, the Jumper must be 'off'. A reset button is available to trigger a hardware reset.

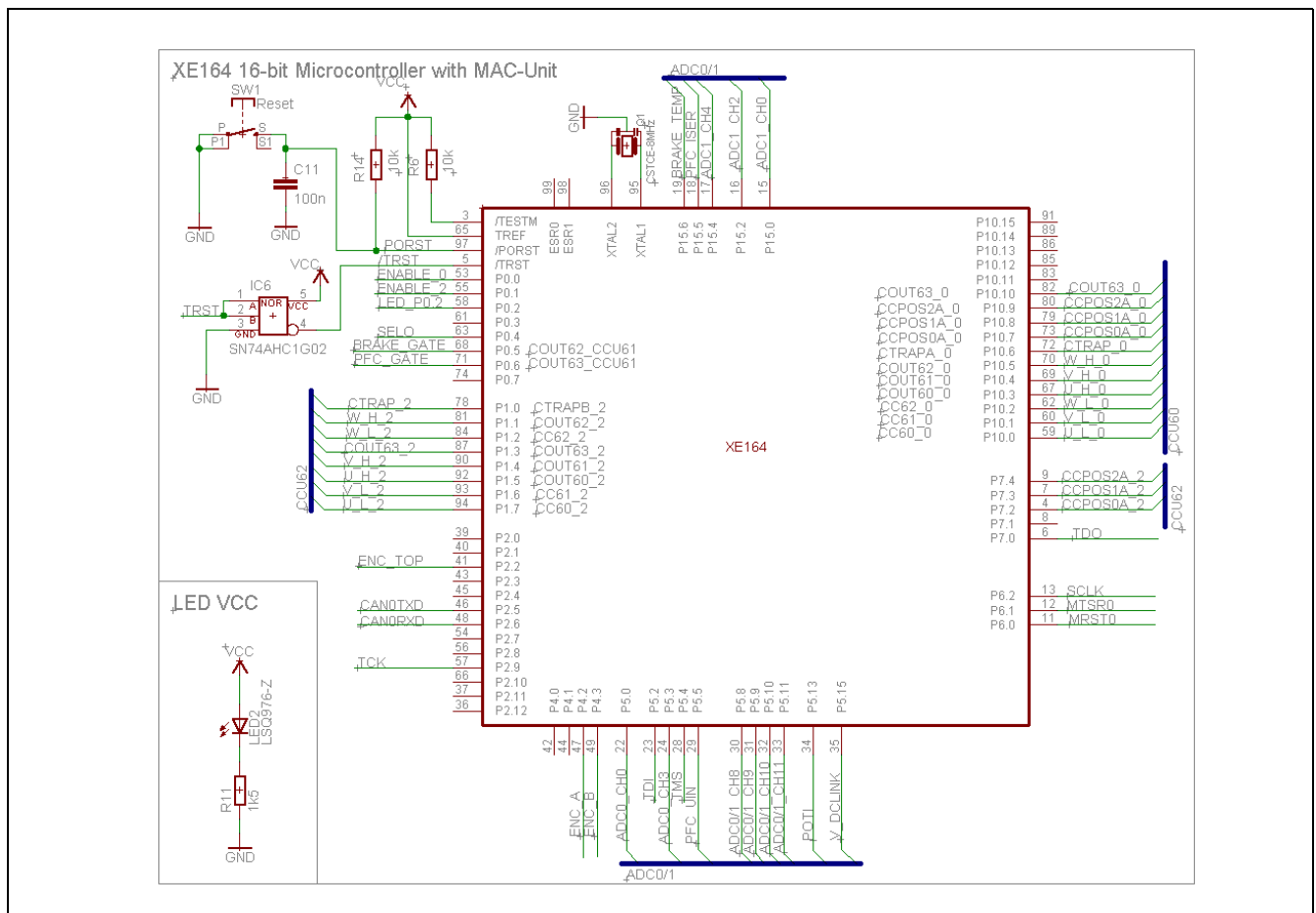


Figure 2 XE164

3.3 User Interface

There is a user interface available through a poti and a GPIO LED. The poti is connected to ADC0 channel 13, the LED is connected to port 0.2. A test pad is connected to this port as well in order to measure fast signals at an oscilloscope.

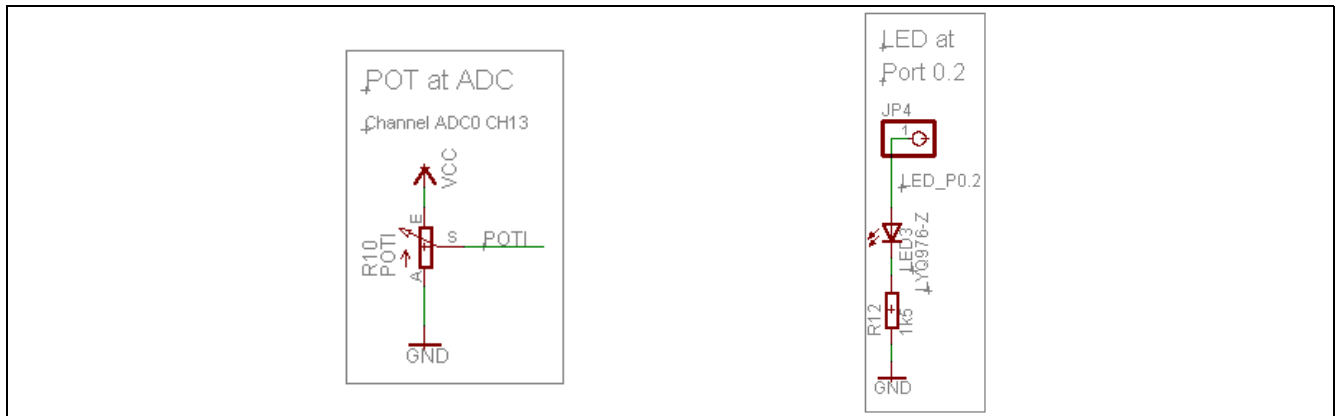


Figure 3 User Interface: POTi and LED

3.4 Digitally Isolated Debug Interface (JTAG, UART and CAN)

The XE164 DriveCard is equipped with a digital isolation for JTAG, UART and the CAN interface. The 5 kV digital isolation securely disconnects any debug, UART and CAN devices from the high voltage levels. As there is a separate power domain for the PC part of the XE164 DriveCard, a 5 V power supply must be provided separately at VCCIO and GNDIO. LED1 indicates the availability of this supply domain.

There is a DriveMonitor USB Stick available from Infineon Technologies that provides JTAG and CAN as well as the 5 V power supply in one device. Please refer to application note AP08071 for details.

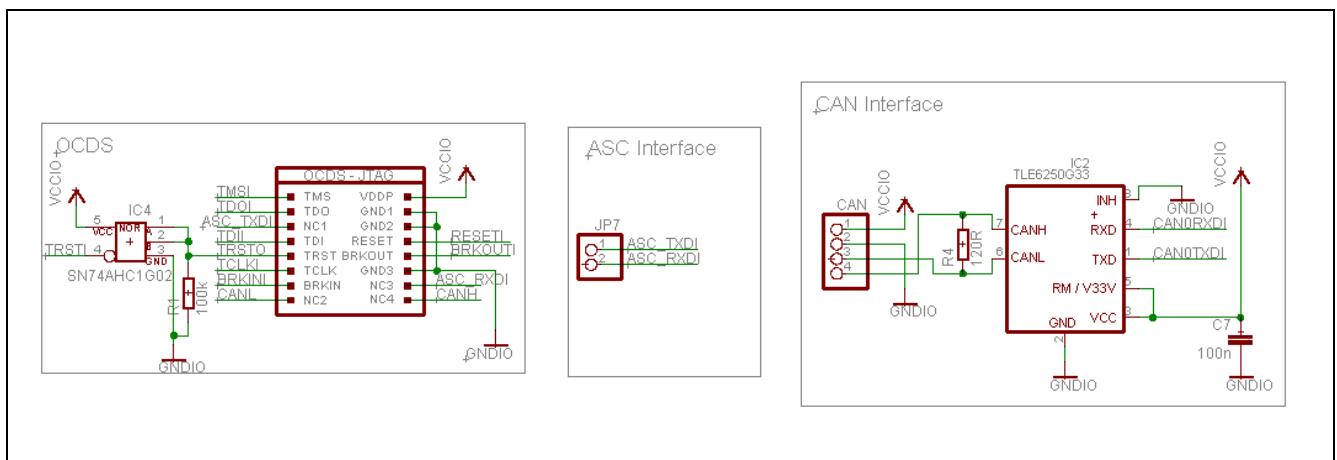


Figure 4 JTAG, UART and CAN: Debugger and Real Time Monitoring Interface

Note: When a standard JTAG box is used, the VCCIO power supply must be provided at the CAN connector.

3.5 Inverter Board Connection

The standard 32-pin connector (DIN 41612, B/2) provides all signals needed for control of two 3-phase power inverter. The lowside (_L) and highside (_H) switches of the three power stages U, V and W are to be connected to the signals U_L, U_H, V_L, V_H, W_L and W_H. They are connected to the MCU's CAPCOM6E peripherals CCU60 and CCU62, flexible and powerful PWM units very well suited for motor control. A low signal at the CTRAP pins of the CAPCOM6E immediately switches all power stages in passive state and acts as an emergency shut-down for the inverter. All CAPCOM6E signals, including COUT63, are available at pin header JP1 for CCU60 and JP5 for CCU62.

An enable signal for the power stages can be provided via signal ENABLE Signals which are connected to the MCU's GPIO port 0.0 and 0.1.

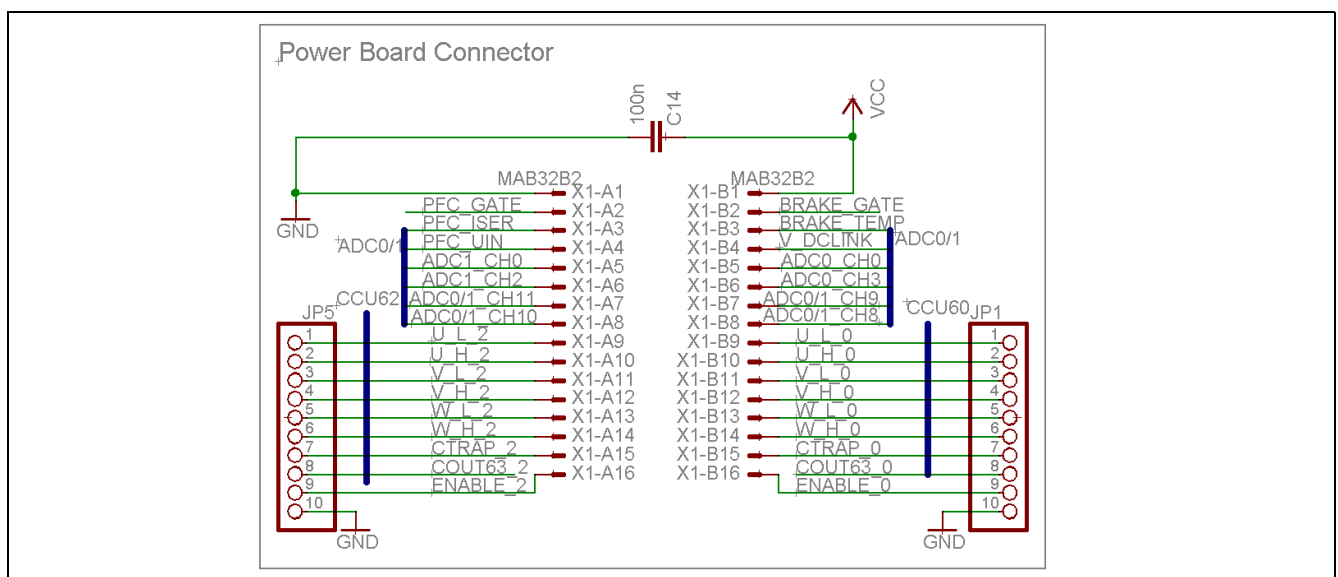


Figure 5 Power Board Connector

A 5 V power supply is expected at pins A1 and B1 of the inverter board connector in order to supply the MCU and peripheral components.

3.6 Hall Sensor Interfaces

The MCU provides two HALL sensor interfaces which can be accessed via JP2 and JP6. Next to the HALL signals that are pulled up to VCC = 5 V, the VCC and GND signals are available as well.

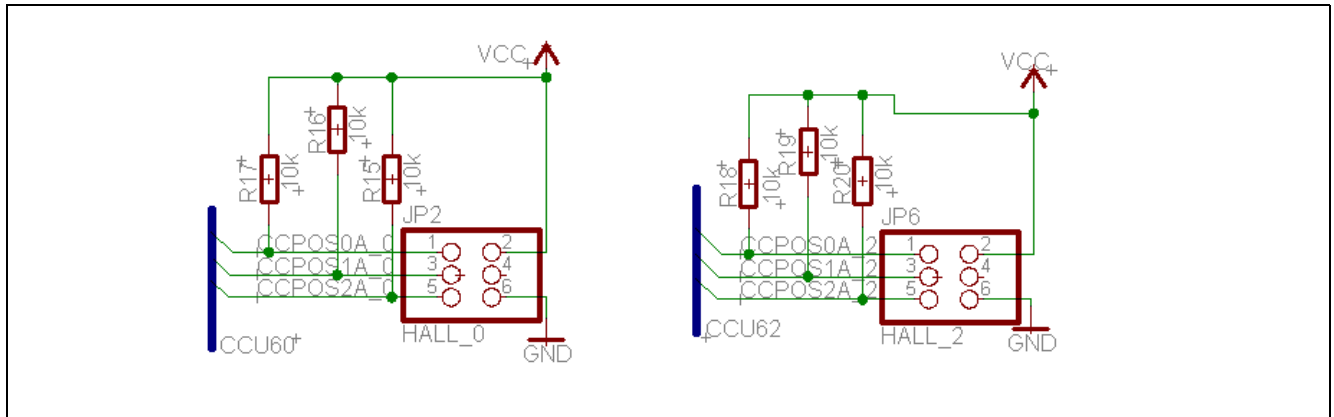


Figure 6 Hall Sensor Interfaces

3.7 USIC Interface

The USIC1 Channel1 signals from the MCU are provided at JP3. This interface is connected directly to the MCU, and is therefore not isolated from the hot ground of the power inverter. The Interface can be used as ASC or SSC. The signals of JP3 can be mapped to GPIOs of the XE164 as well.

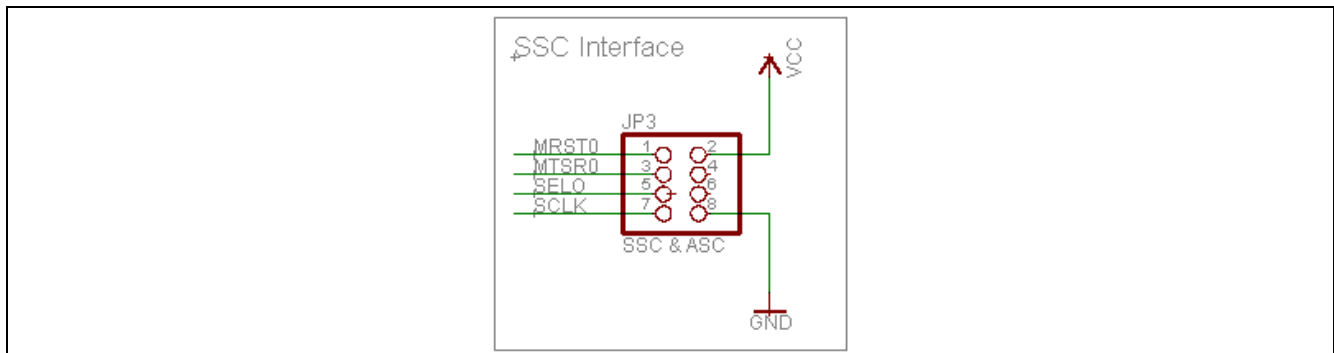


Figure 7 USIC Interface (SSC, ASC)

3.8 Encoder Interface

The Encoder Signals ENC_A and ENC_B are connected to the Timer 2 input. T2 operates in incremental interface mode automatically providing information on the sensor's current position.

In incremental interface mode, the two inputs associated with core timer T2 (T2IN, T2EUD) are used to interface to an incremental encoder. T2 is clocked by each transition on one or both of the external input pins to provide 2-fold or 4-fold resolution of the encoder input.

The Encoder_Top signal is connected to pin 2.2. With the ERU unit this pin can act like an external Interrupt request pin.

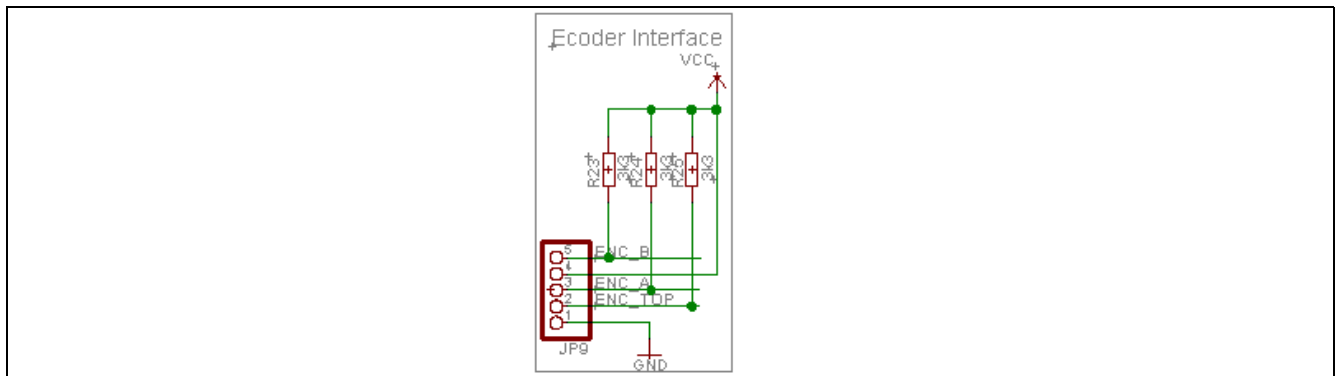


Figure 8 Encoder Interface

4 PCB Layout

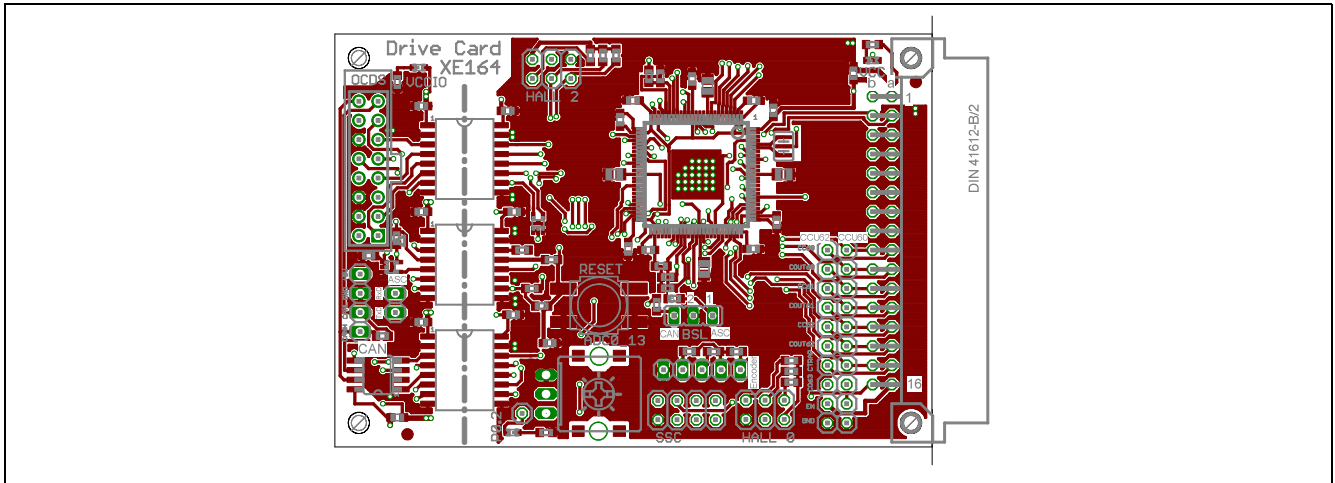


Figure 9 Top view and Text

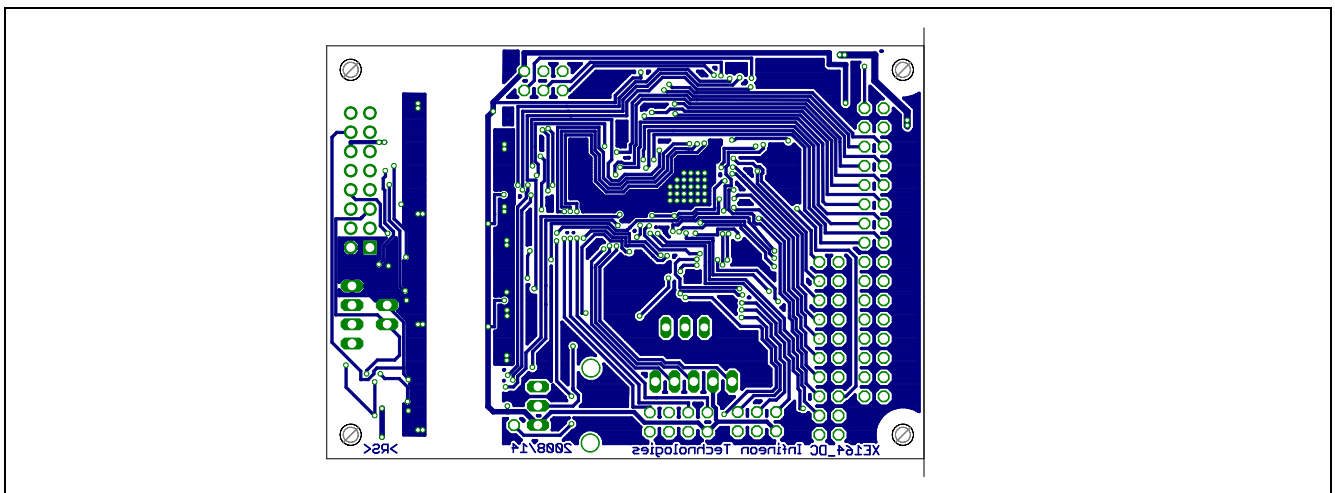


Figure 10 Bottom view

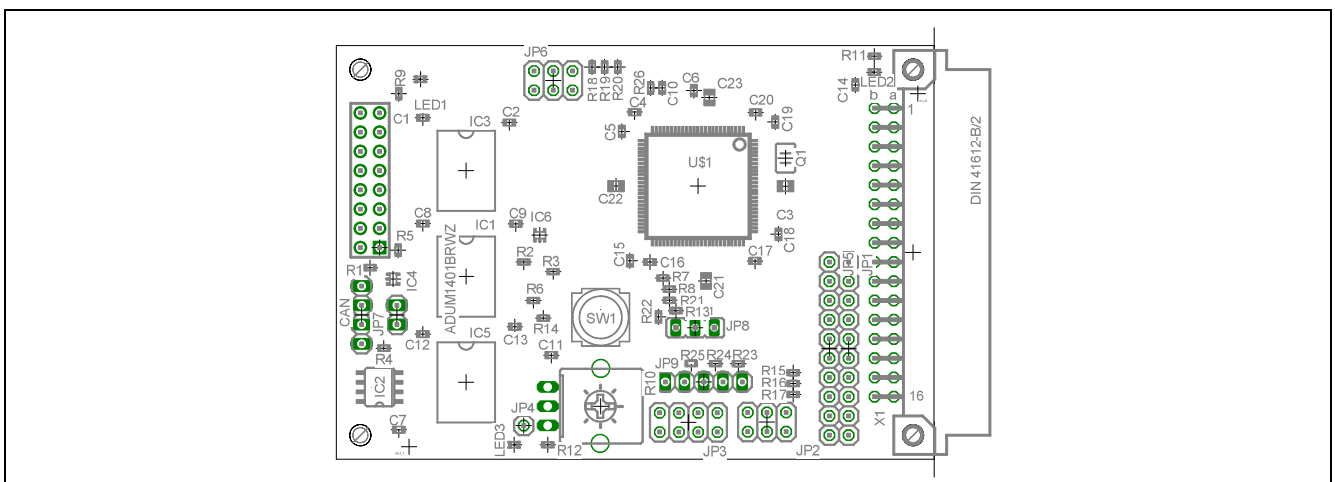


Figure 11 Solder view

www.infineon.com