

BGS15AN16

Performance of SP5T Antenna Switch  
WCDMA Diversity Applications

Application Note AN230

Revision: Rev. 1.0  
2011-02-15

**Edition 2011-06-09**

**Published by  
Infineon Technologies AG  
81726 Munich, Germany**

**© 2011 Infineon Technologies AG  
All Rights Reserved.**

#### **LEGAL DISCLAIMER**

THE INFORMATION GIVEN IN THIS APPLICATION NOTE IS GIVEN AS A HINT FOR THE IMPLEMENTATION OF THE INFINEON TECHNOLOGIES COMPONENT ONLY AND SHALL NOT BE REGARDED AS ANY DESCRIPTION OR WARRANTY OF A CERTAIN FUNCTIONALITY, CONDITION OR QUALITY OF THE INFINEON TECHNOLOGIES COMPONENT. THE RECIPIENT OF THIS APPLICATION NOTE MUST VERIFY ANY FUNCTION DESCRIBED HEREIN IN THE REAL APPLICATION. INFINEON TECHNOLOGIES HEREBY DISCLAIMS ANY AND ALL WARRANTIES AND LIABILITIES OF ANY KIND (INCLUDING WITHOUT LIMITATION WARRANTIES OF NON-INFRINGEMENT OF INTELLECTUAL PROPERTY RIGHTS OF ANY THIRD PARTY) WITH RESPECT TO ANY AND ALL INFORMATION GIVEN IN THIS APPLICATION NOTE.

#### **Information**

For further information on technology, delivery terms and conditions and prices, please contact the nearest Infineon Technologies Office ([www.infineon.com](http://www.infineon.com)).

#### **Warnings**

Due to technical requirements, components may contain dangerous substances. For information on the types in question, please contact the nearest Infineon Technologies Office.

Infineon Technologies components may be used in life-support devices or systems only with the express written approval of Infineon Technologies, if a failure of such components can reasonably be expected to cause the failure of that life-support device or system or to affect the safety or effectiveness of that device or system. Life support devices or systems are intended to be implanted in the human body or to support and/or maintain and sustain and/or protect human life. If they fail, it is reasonable to assume that the health of the user or other persons may be endangered.



## Table of Content

<b>1</b>	<b>Introduction .....</b>	<b>5</b>
<b>2</b>	<b>BGS15AN16 Features .....</b>	<b>6</b>
2.1	Main Features .....	6
2.2	Functional Diagram .....	6
2.3	Pin Configuration .....	7
2.4	Pin Description .....	7
<b>3</b>	<b>Application .....</b>	<b>8</b>
3.1	Application Example .....	8
3.2	Application Board .....	8
<b>4</b>	<b>Small Signal Characteristics .....</b>	<b>10</b>
4.1	Measurement Results .....	10
<b>5</b>	<b>Intermodulation .....</b>	<b>14</b>
<b>6</b>	<b>Harmonic Generation .....</b>	<b>16</b>
<b>7</b>	<b>Power Compression Measurements on All RF Paths .....</b>	<b>18</b>
<b>Appendix: Switch Controller Unit .....</b>		<b>19</b>
<b>Author</b>	<b>.....</b>	<b>21</b>

## List of Figures

Figure 1	BGS15AN16 Functional Diagram .....	6
Figure 2	Pin configuration .....	7
Figure 3	Application multiband transceiver with antenna diversity switch .....	8
Figure 4	Circuit diagram of BGS15AN16 application board .....	9
Figure 5	Layout of the application board .....	9
Figure 6	PCB layer information .....	10
Figure 7	Forward transmission curves for all RF parts .....	11
Figure 8	Return loss for all RF path .....	11
Figure 9	Block diagram of RF Switch intermodulation .....	14
Figure 10	Test set-up for IMD Measurements .....	15
Figure 11	IMD2 and IMD3 results for Band I .....	15
Figure 12	Set-up for harmonics measurement .....	16
Figure 13	2 <sup>nd</sup> harmonic at $f_c=830$ MHz .....	17
Figure 14	3 <sup>rd</sup> harmonic at $f_c=830$ MHz .....	17
Figure 15	Power Compression Measurement Results at $f_c=830$ MHz .....	18
Figure 16	Switch Controller Unit Board .....	19

## List of Tables

Table 1	Pin Description (top view) .....	7
Table 2	BGS15 Antenna to Port Isolation (in dB) .....	12
Table 3	BGS15 Port to Port Isolation (in dB) .....	13
Table 4	Test Conditions and specifications of IMD Measurements .....	14
Table 5	Seeting Display of Active RF Path .....	20

## **1 Introduction**

The BGS15AN16 is a generic SP5T RF CMOS switch for applications in the frequency range from 0.1 to 3GHz with standard GPIO control. It typically is used in mobile cellular devices for WCDMA and GSM/ EDGE receive-diversity as described in this application note. Any of the 5 ports

can be used as termination of the diversity antenna handling up to 30 dBm.

This SP5T offers low insertion loss and high robustness against interferer signals at the antenna port and low harmonic generation in termination mode.

An integrated LDO allows to connect Vdd directly to battery, hence no regulated supply voltage is required. A power down mode is implemented to avoid current drain when the device is not in use.

The on-chip GPIO controller integrates CMOS logic and level shifters, driven by control inputs from 1.5 V to Vdd. Unlike GaAs technology, external DC blocking capacitors at the RF Ports are only required if DC voltage is applied externally.

The BGS15AN16 RF Switch is manufactured in Infineon's patented MOS technology, offering the performance of GaAs with the economy and integration of conventional CMOS including the inherent higher ESD robustness.

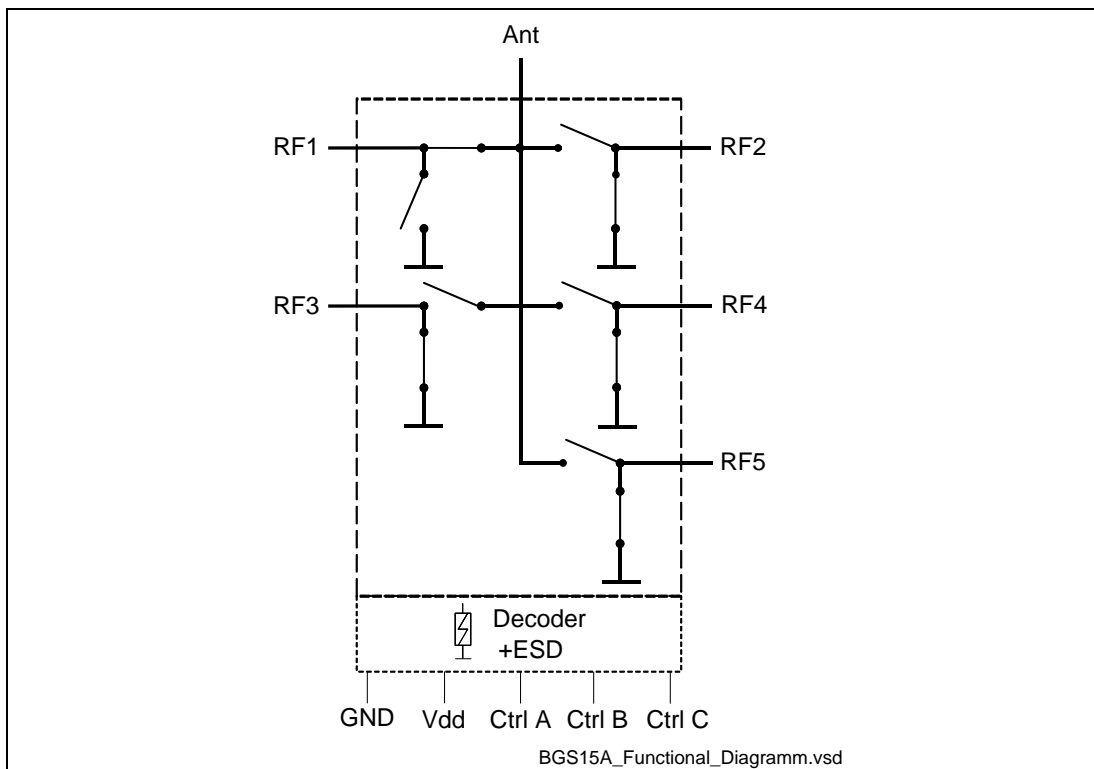
The device has a very small size of only 2.3 x 2.3 mm<sup>2</sup> and a maximum height of 0.77 mm.

## 2 BGS15AN16 Features

### 2.1 Main Features

- 5 high-linearity Rx ports with power handling capability of up to 30 dBm
- All ports fully symmetrical
- No external decoupling components required
- High ESD robustness up to 8kV according IEC-61000-4-2 with external coil.
- Low harmonic generation
- Low insertion loss
- High port-to-port-isolation
- 0.1 to 3.0 GHz coverage
- Direct connect to battery
- Power down mode
- On-chip control logic supporting logic levels from 1.5 V to Vdd
- Lead and halogen free package (RoHS and WEEE compliant)
- Small leadless package TSNP16 with the size of 2.3 x 2.3 mm<sup>2</sup> and a maximum height of 0.77 mm

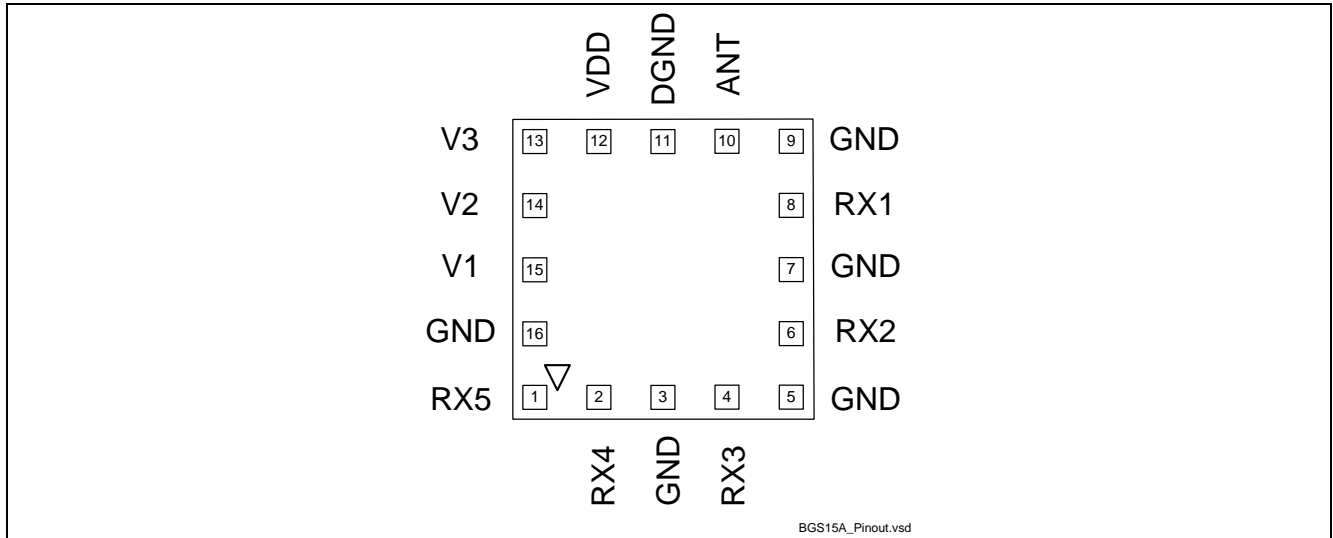
### 2.2 Functional Diagram



**Figure 1 BGS15AN16 Functional Diagram**

## 2.3 Pin Configuration

In Figure 2 the pin configuration in top view is given.



**Figure 2** Pin configuration

## 2.4 Pin Description

**Table 1** Pin Description (top view)

Pin NO	Name	Pin Type	Function
1	RX5	RX5	Rx RF port 5
2	RX4	I/O	RX RF port 4
3	GND	GND	Ground
4	RX3	I/O	Rx RF port 3
5	GND	GND	Ground
6	RX2	I/O	Rx RF port 2
7	GND	GND	Ground
8	RX1	I/O	Rx RF port 1
9	GND	GND	Ground
10	ANT	I/O	Antenna port
11	DGND	GND	Ground
12	VDD	PWR	Vdd supply
13	V3	I	Control pin3
14	V2	I	Control pin2
15	V1	I	Control pin1
16	GND	GND	Ground

### 3 Application

#### 3.1 Application Example

In Figure 3 one possible application for the BGS15AN16 is shown. The BGS15AN16 is used as a diversity switch in combination with a multiband UMTS transceiver.

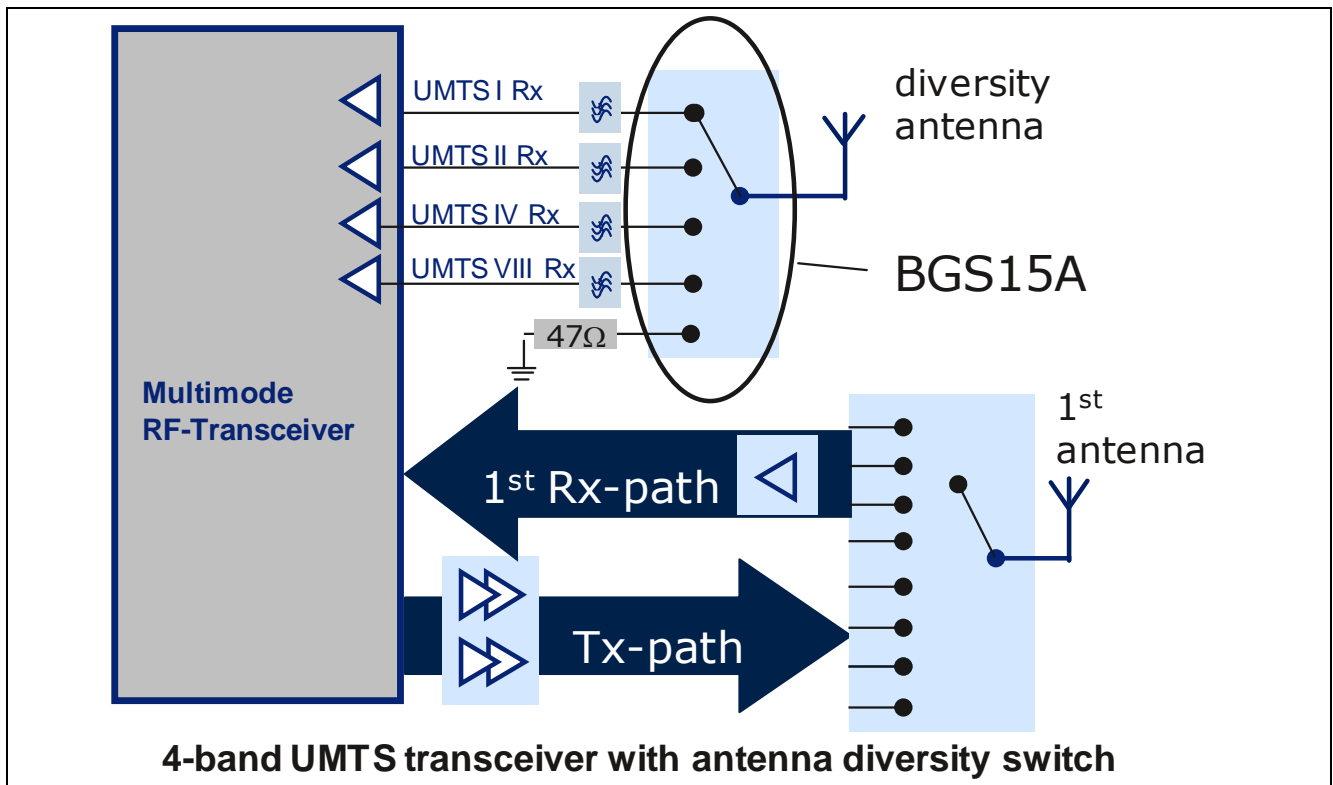
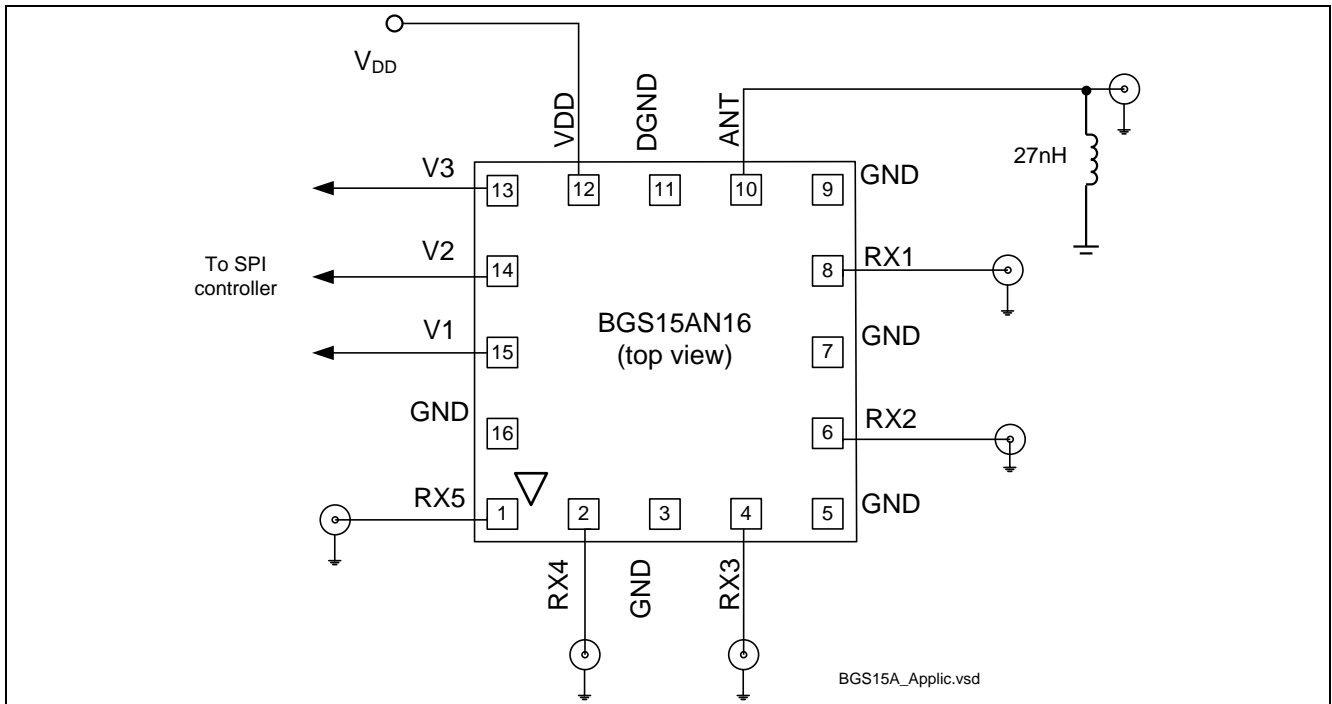


Figure 3 Application multiband transceiver with antenna diversity switch

#### 3.2 Application Board

In figure 4 the circuit diagram of the BGS15AN16 is shown. Only one inductor at the antenna input is required. For ESD protection, and matching a 27nH SMD inductor is placed at the antenna port.





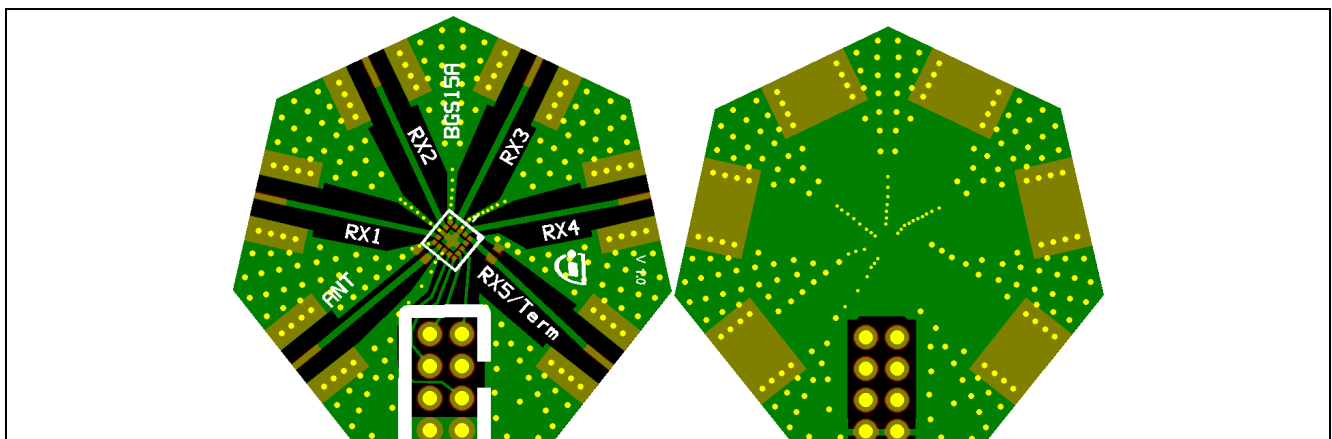
**Figure 4** Circuit diagram of BGS15AN16 application board

Below is a picture of the evaluation board used for the measurements (Figure 5). The board is designed in the way that all connecting 50 Ohm lines have the same length.

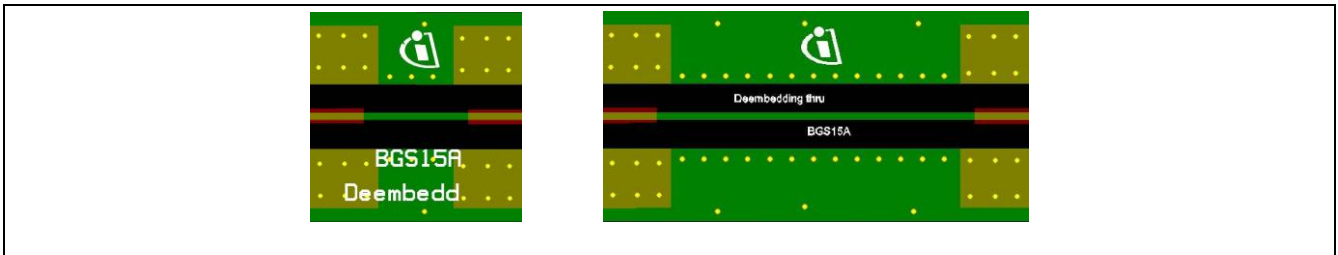
To get correct values for the insertion loss of the BGS15AN16 all influences and losses of the evaluation board, lines and connectors have to be eliminated. Therefore a separate de-embedding board, representing the line length is necessary.

The calibration of the network analyser (NWA) is done in several steps:

- Perform full calibration the on all NWA ports.
- Attach empty SMA connector at port 2 and perform “open” port extension. Turn port extensions on.
- Connect the “half” de-embedding board (figure 6 left board) between port1 and port2, store this as a s-parameter (sp2) file.
- Turn all port extension off.
- Load the stored s-parameter file as de-embedding on all used NWA ports
- Switch port extension on
- Check insertion loss with the de-embedding through board (figure 6 right board)

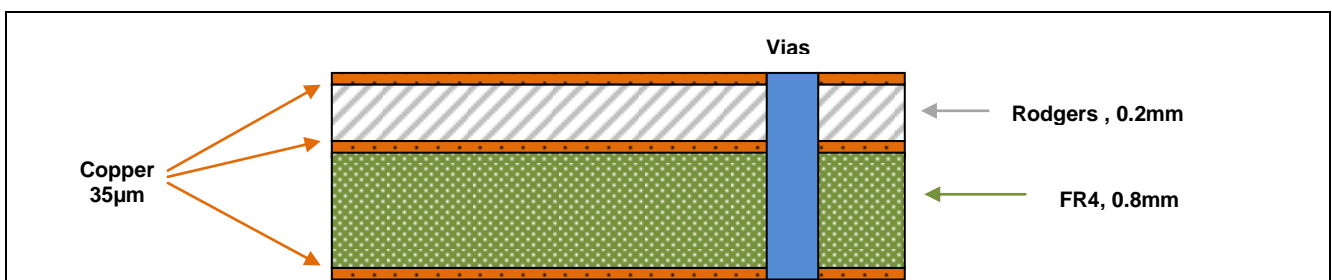


**Figure 5** Layout of the application board



**Figure 6** Layout of de-embedding boards

The construction of the PCB is shown in Figure 7.



**Figure 7** PCB layer information

## 4 Small Signal Characteristics

The small signal characteristics are measured at 25 °C with a Network analyzer connected to an automatic multiport switch box.

### 4.1 Measurement Results

In the following tables and graphs the most important RF parameter of the BGS15AN16 are shown. The markers are set to the most important frequencies of the WCDMA system.

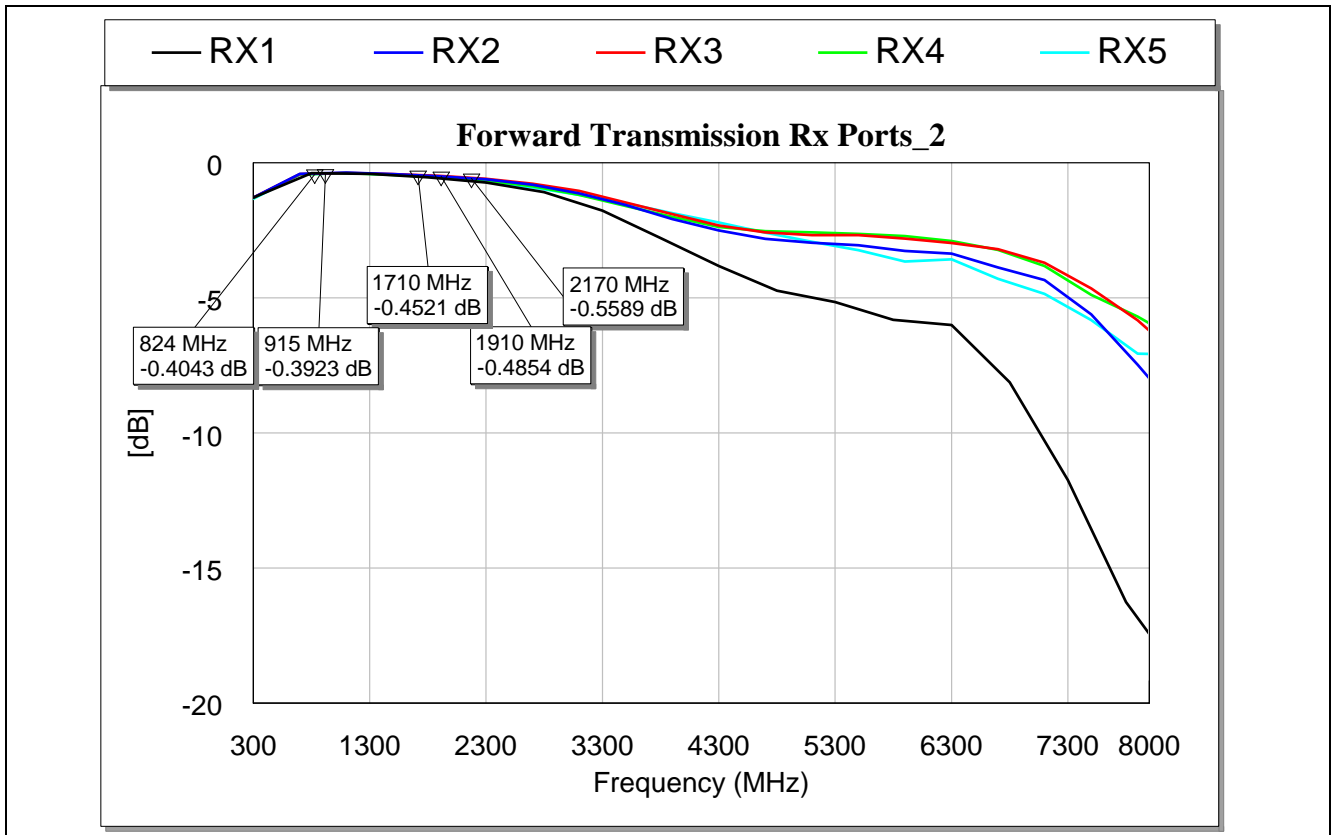


Figure 8 Forward transmission curves for all RF parts

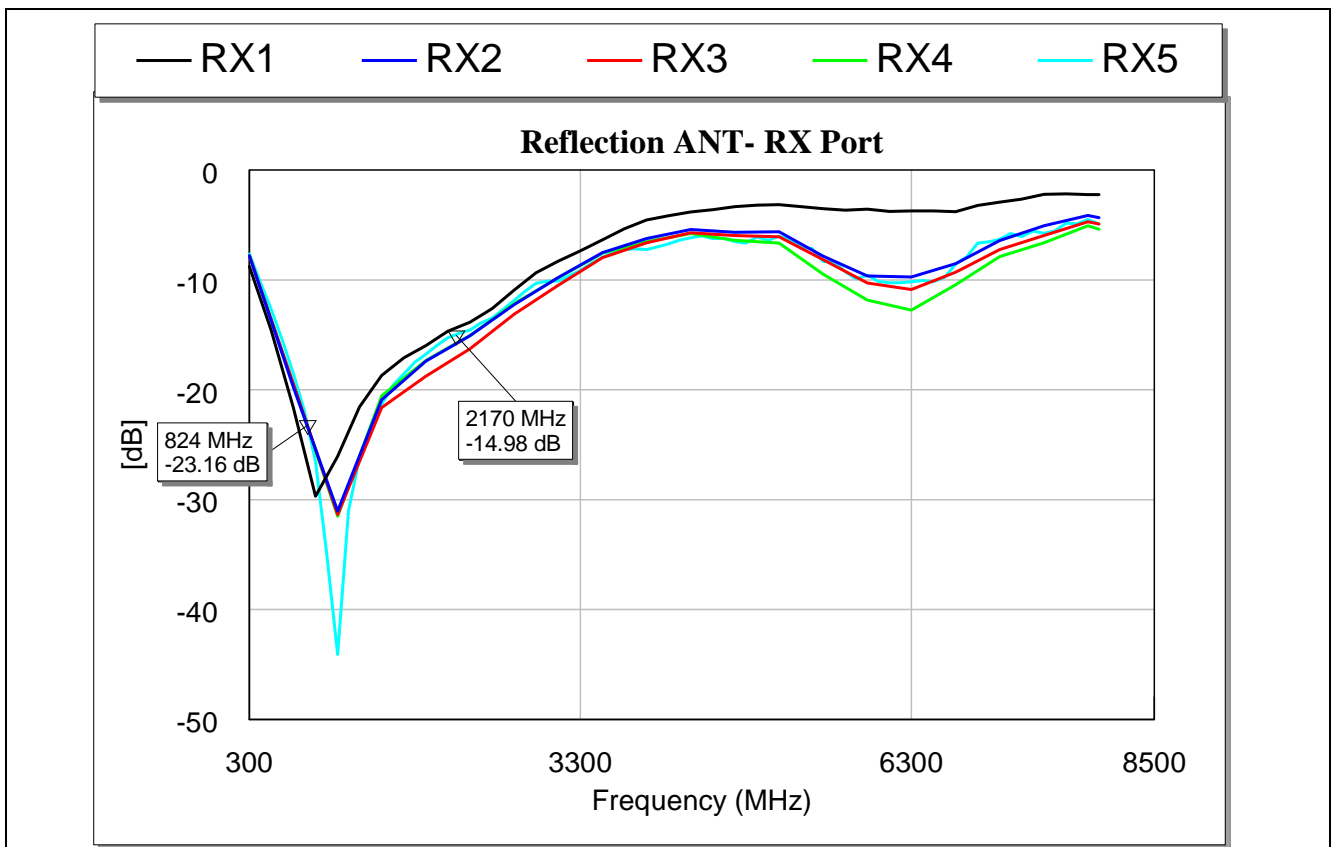


Figure 9 Return loss for all RF path

In Table 2 the isolation values antenna to the different RF ports are given.

**Table 2 BGS15 antenna to port isolation (in dB)**

	Freq (MHz)	Ant > RX1	Ant > Rx2	Ant > Rx3	Ant > Rx4	Ant > TM5
Rx1	824		41.4	42.2	43.5	43.6
	915		40.4	41	42.5	42.5
	1710		34.2	32.7	35.3	35.2
	1970		32.9	31	33.7	33.7
	2170		31.5	29	31.9	32
Rx2	824	40.3		36.3	42.6	44.1
	915	39.8		35.2	41.5	43
	1710	32		28	34.5	35.6
	1970	30.3		26.6	33	34.1
	2170	28.7		25.3	31.5	32.6
Rx3	824	42.3	49.8		40.3	46
	915	41.2	48.5		39.2	44.8
	1710	33	38.5		32.3	36.7
	1970	31.2	36.4		30.8	35.1
	2170	29.6	34		29.4	33.3
Rx4	824	43.1	50	45.7		42.8
	915	42	48.9	44.1		41.7
	1710	33.8	41.8	33.7		33.1
	1970	31.9	40	31.7		31.2
	2170	30.1	37.8	29.5		29.3
TM5	824	43.3	49.1	44.9	41.6	
	915	42.2	48	43.4	40.6	
	1710	33.6	41	33.8	32.1	
	1970	31.7	39.2	31.8	30.1	
	2170	30	37.1	29.7	28.1	

The values for the port to port isolation are given in Table 3

**Table 3 BGS15 port to port isolation (in dB)**

	Freq (MHz)	Ant > RX1	Ant > Rx2	Ant > Rx3	Ant > Rx4	Ant > TM5
Rx1	824		50.2	44.4	44.9	44.3
	915		49.1	43	43.7	43.2
	1710		44.3	34.9	36.9	36.3
	1970		42.7	32.9	35.1	34.5
	2170		40.5	30.3	32.9	32.2
Rx2	824	33.5		49	46.2	43.8
	915	32.3		47.6	45	42.6
	1710	26.1		37.6	38.3	35.8
	1970	24.7		35.2	36.5	34.1
	2170	23.2		32.5	34.2	32
Rx3	824	34.3	36.7		50.3	42
	915	33.1	35.5		49.1	40.8
	1710	26.8	29.3		41.6	34.2
	1970	25.4	27.9		39.3	32.5
	2170	23.8	26.2		36.6	30.6
Rx4	824	41.2	39.6	34.6		33.6
	915	40	38.4	33.4		32.4
	1710	34	30.6	27.1		26.1
	1970	32.6	29	25.7		24.6
	2170	30.9	27	24.1		23.1
TM5	824	41.7	41.1	33.3	34.7	
	915	40.5	39.8	32.1	33.5	
	1710	34.4	32.2	25.7	27.1	
	1970	33	30.4	24.3	25.7	
	2170	31.3	28.2	22.5	24.1	

## 5 Intermodulation

Another very important parameter of a RF switch is the large signal capability. One of the possible intermodulation scenarios is shown in Figure 10. The transmission (Tx) signal from the main antenna is coupled into the diversity antenna with high power. This signal (20 dBm) and a received Jammer signal (-15 dBm) are entering the switch.

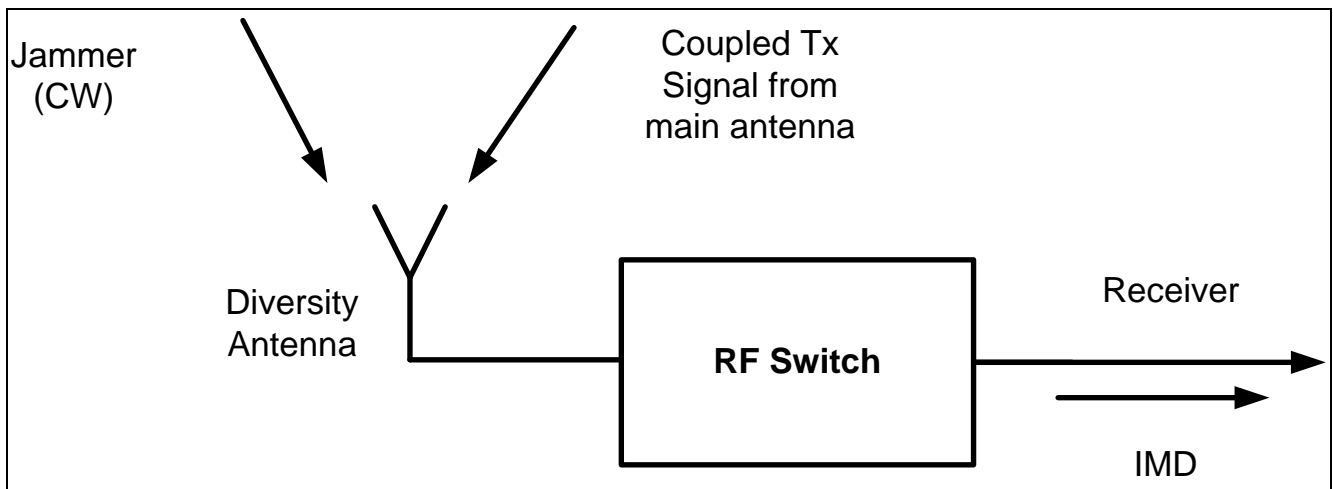


Figure 10 Block diagram of RF Switch intermodulation

Special combinations of TX and Jammer signal are producing intermodulation products 2<sup>nd</sup> and 3rd order, which fall in the RX band and disturb the wanted RX signal.

In Table 4 frequencies for 3 bands and the linearity specifications for an undisturbed communication are given.

Table 4 Test conditions and specifications of IMD measurements

Test Conditions (Tx = +20dBm, BI = -15dBm, freq.in MHz, @25°C)						Linearity Specification			
Band	Tx Freq.	Rx Freq.	IMD2 Low Jammer 1	IMD3 Jammer 2	IMD2 High Jammer 3	IM2 (dBm)	IIP2 (dBm)	IM3 (dBm)	IIP3 (dBm)
850	836.5	881.5	45	791.5	1718	-105	110	-105	65
1900	1880	1960	80	1800	3840	-105	110	-105	65
2100	1950	2140	190	1760	4090	-105	110	-105	65

The test setup for the IMD measurements has to provide a very high isolation between RX and TX signals. As an example the test set-up and the results for the high band are shown (Figure 11 and Figure 12).

For the RX / TX separation a professional duplexer with 80 dB isolation is used.

In Figure 12 the results for High band are given. For each distortion scenario there is a min and a max value given. This variation is caused by a phase shifter connected between switch and duplexer. In the test set-up the phase shifter represents a no ideal matching of the switch to 50 Ohm.

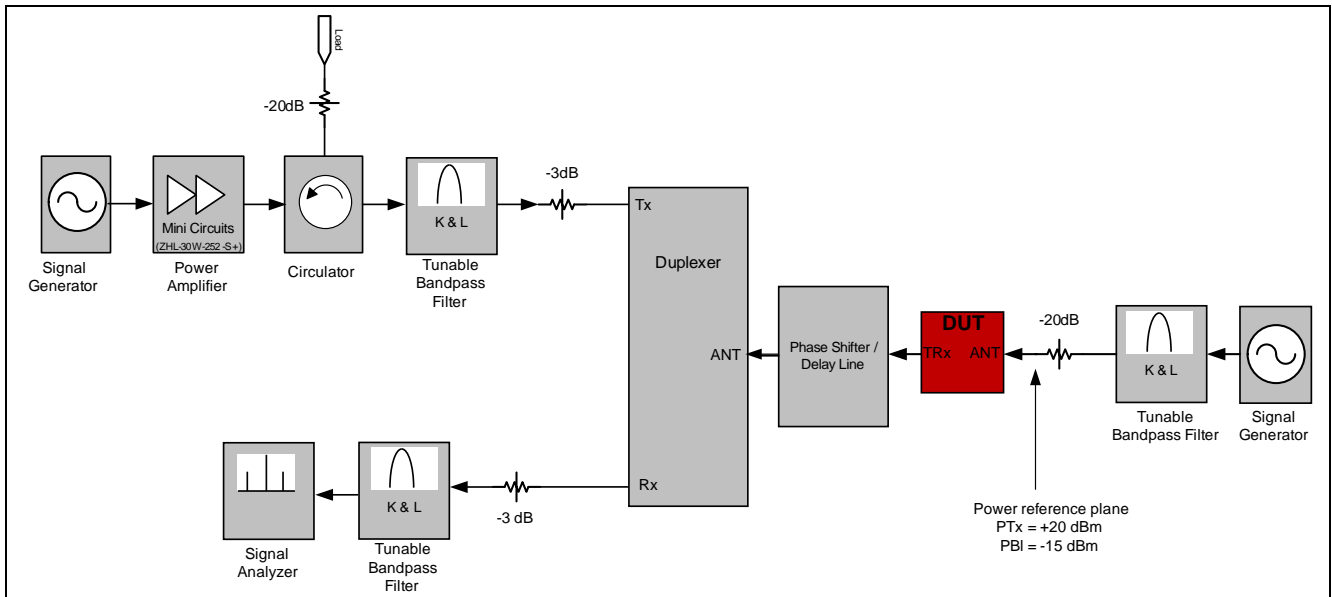


Figure 11 Test set-up for IMD Measurements

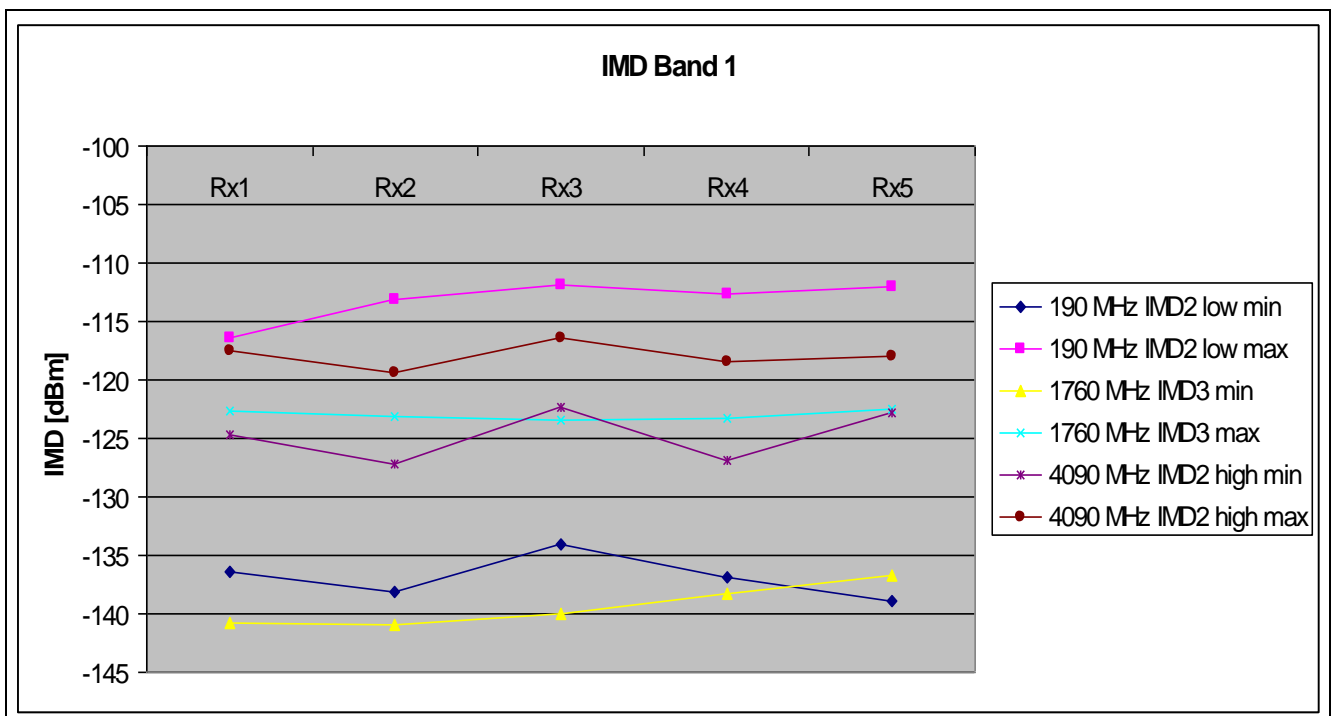
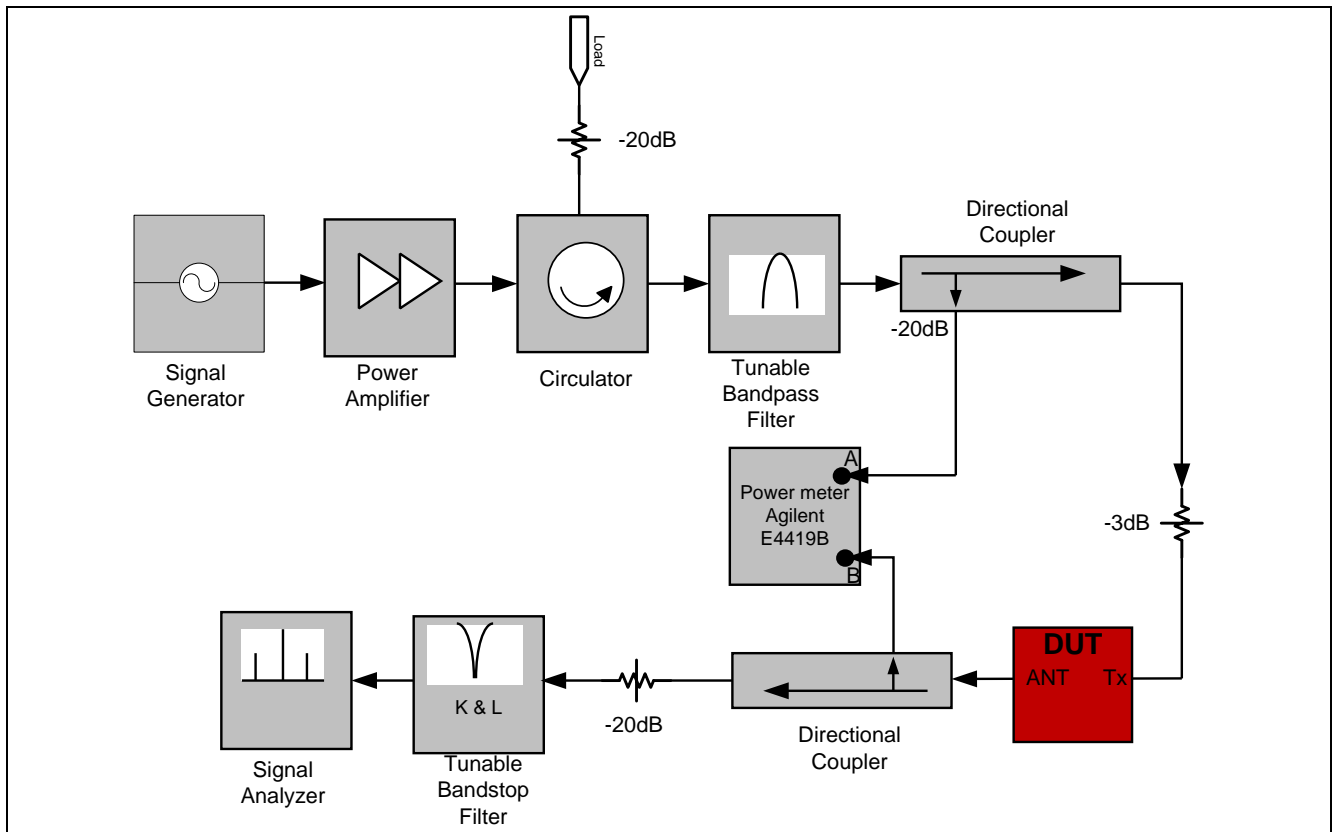


Figure 12 IMD2 and IMD3 results for Band I

## 6 Harmonic Generation

Harmonic generation is another important parameter for the characterization of a RF switch. RF switches have to deal with high RF levels, up to 33 dBm. With this high RF power at the input of the switch harmonics are generated. This harmonics (2<sup>nd</sup> and 3<sup>rd</sup>) can disturb the other reception bands or cause distortion in other RF applications (GPS, WLAN) within the mobile phone.



**Figure 13 Set-up for harmonics measurement**

The results for the harmonic generation at 830 MHz are shown in Figure 14 (2<sup>nd</sup> harmonic) and Figure 15 (3<sup>rd</sup> harmonic) for all RF ports.

At the x-axis the input power is plotted and at the y- axis the generated harmonics in dBm.



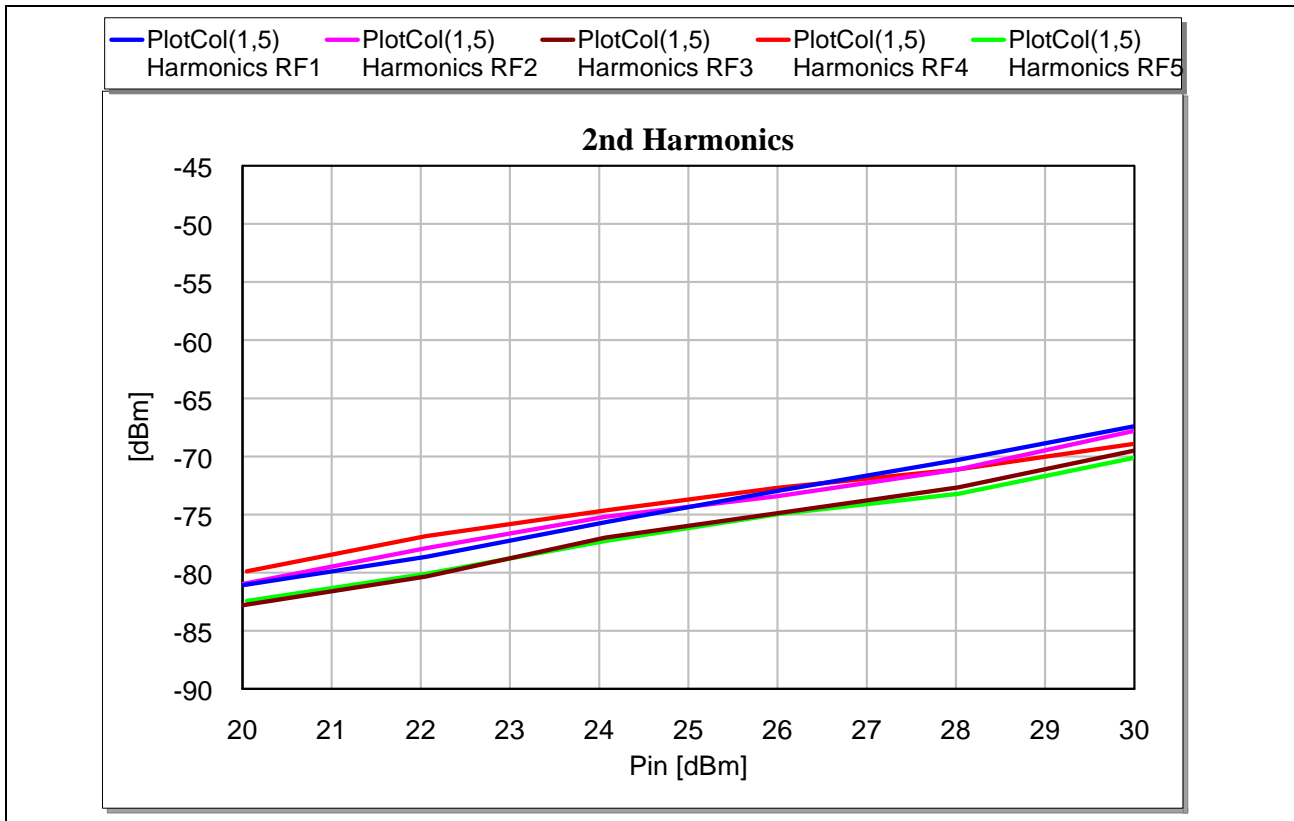


Figure 14 2<sup>nd</sup> harmonic at  $f_c=830$  MHz

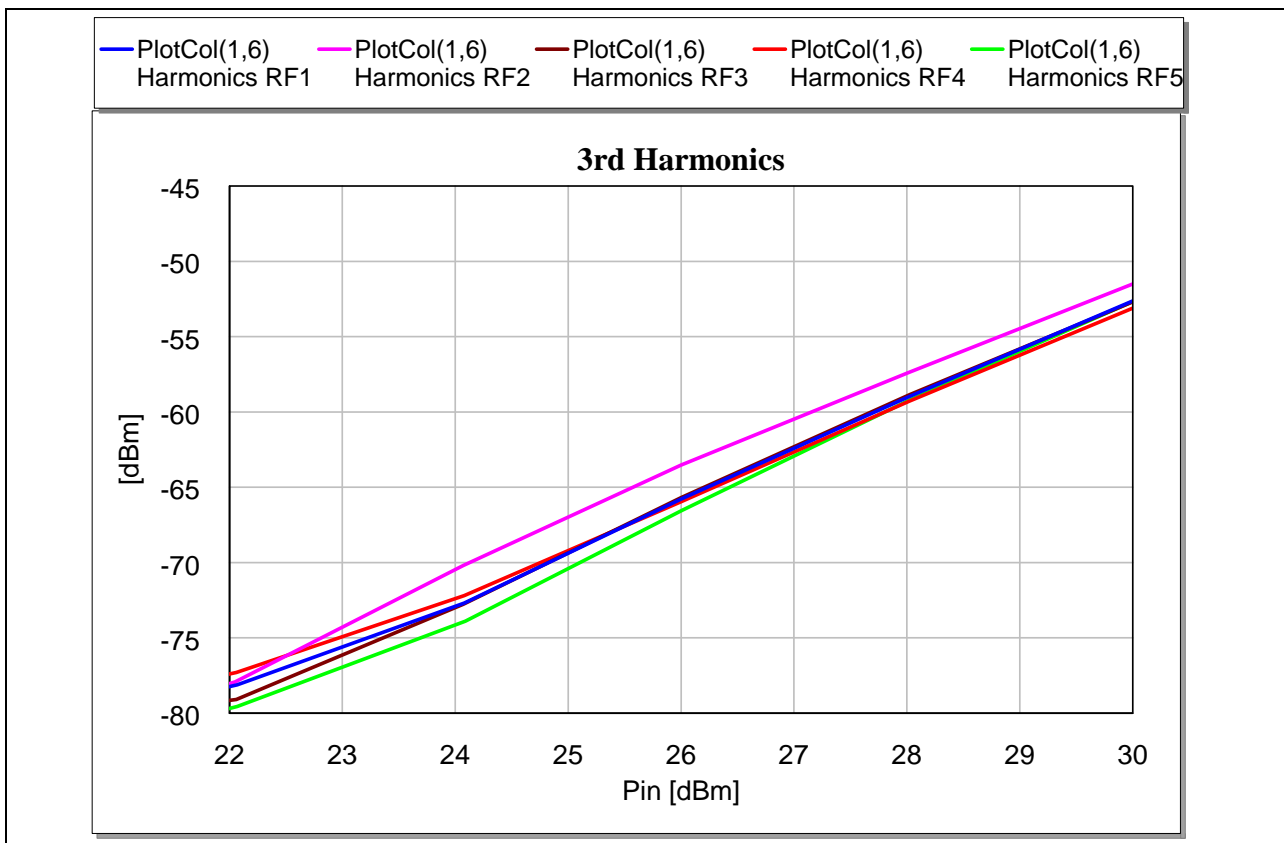


Figure 15 3<sup>rd</sup> harmonic at  $f_c=830$  MHz

## 7 Power Compression Measurements on all RF Paths

To judge the large signal capability the power compression is a usual measurement tool. The input power is increase and at the output the power is measured. At a certain point the output power could not follow the input and the switch compresses the RF signal. In the diagram below (Figure 16) the IL is plotted versus the injected input power. The input power can be increased to 30 dBm and there is no compression visible on none of the RF ports.

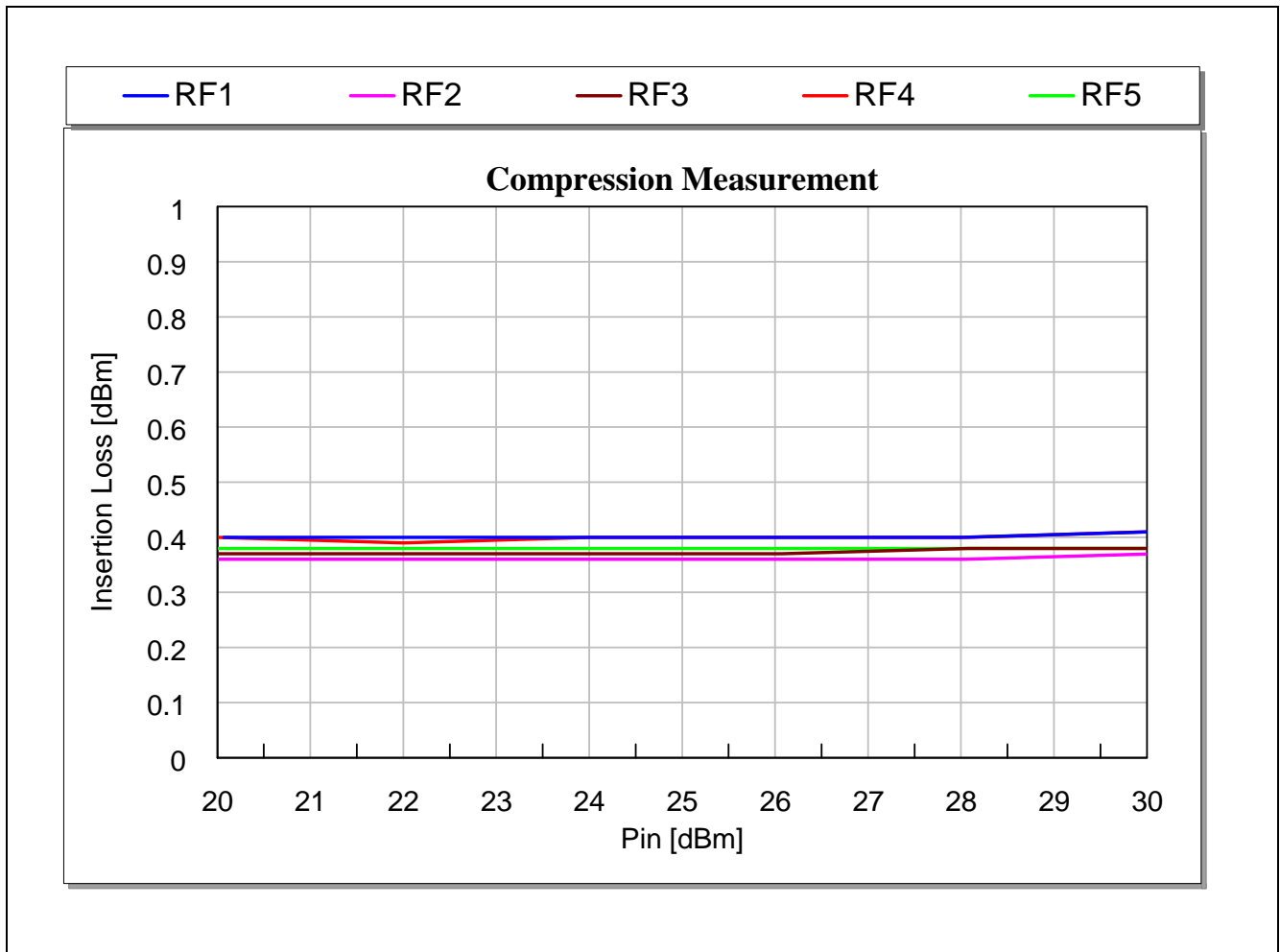


Figure 16 Power Compression Measurement Results at  $f_c=830$  MHz

The measurements are done on Large Signal measurement setup which is not calibrated for Insertion Loss with high precision. So the values here may differ with the actual IL values earlier in this report.

## Appendix: Switch Controller Unit

The BGS15AN16 is controlled via GPIO interface and Infineon offers a GPIO controller unit to ease the evaluation of its BGS15AN16 on application board. The unit is very simple to use with a few buttons to select the right device and different states.

This section helps as a short user guide for the controller unit shown in Figure 17. The controller unit requires a DC supply of 5.5V with a current capability of 50mA.

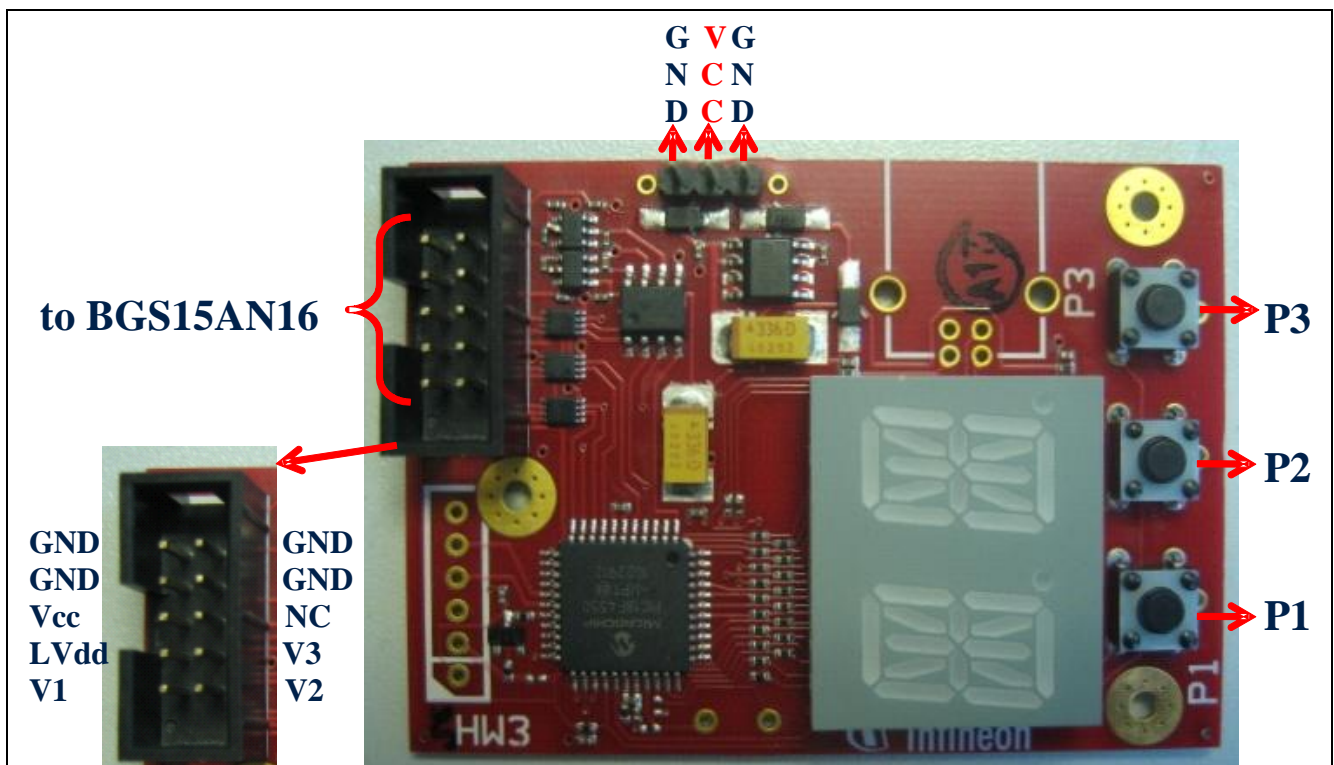


Figure 17 Switch Controller Unit Board

Please observe the following steps to use the controller unit:

1. **Step1:** Attach the power supply and “OK” appears on the display.
2. **Step2:** Set the control mode:
  - a. Press and hold “P1” and “P3” simultaneously until “15” appears on the display
  - b. “P2” can be used to set the Vdd to the switch between 1.8V, 3.5V (default) and 4.0V
  - c. To use 4V, please connect to 6V power supply instead of 5.5V
  - d. “15” addresses BGS15AN16 device
3. **Step3:** Connect the control unit to the switch with an appropriate cable according to the connector pin out shown in Figure 17.
4. **Step4:** Set the switch state to measure using “P1” and “P3”. The active paths corresponding to the state displayed are tabulated in Table 5.

**Table 5**      **Display of Active RF Path**

<b>Display</b>	<b>Active RF Path</b>
R1	ANT – Rx1
R2	ANT – Rx2
R3	ANT – Rx3
R4	ANT – Rx4
TM	ANT – Rx5
DS	Switch Stand-by (Power Down)

## **Author**

Ralph Kuhn, Senior Staff Application Engineer of the Business Unit "RF and Protection Devices"

