

**Please note that Cypress is an Infineon Technologies Company.**

The document following this cover page is marked as “Cypress” document as this is the company that originally developed the product. Please note that Infineon will continue to offer the product to new and existing customers as part of the Infineon product portfolio.

**Continuity of document content**

The fact that Infineon offers the following product as part of the Infineon product portfolio does not lead to any changes to this document. Future revisions will occur when appropriate, and any changes will be set out on the document history page.

**Continuity of ordering part numbers**

Infineon continues to support existing part numbers. Please continue to use the ordering part numbers listed in the datasheet for ordering.

## PSoC Creator - Implementing Programmable Logic Designs with Verilog

**Author:** Vijay Kumar Marrivagu/Antonio Rohit De Lima Fernandes  
**Associated Part Family:** CY8C3xxx, CY8C5xxx, CY8C42xx, CY8C6xxx  
**Software Version:** PSoC® Creator™ 4.2  
**Related Application Notes:** [AN81623](#), [AN82156](#)

To get the latest version of this application note, or the associated project file, please visit <http://www.cypress.com/AN82250>.

AN82250 describes how to implement programmable digital logic designs in the PLD portion of PSoC® 3, PSoC 4, PSoC 5LP, and PSoC 6 MCU. It introduces the PSoC Universal Digital Blocks (UDBs) and their programmable logic device (PLD) sub-blocks. An example project illustrates how you can use the PLDs in a design by creating Verilog-based components in PSoC Creator™.

### Contents

1	Introduction.....	1	6.1	Additional Information .....	19	
2	PSoC UDBs.....	2	7	Related Resources.....	20	
2.1	Architecture of PLDs in PSoC UDB .....	2	About the Authors .....			20
3	PSoC Creator .....	4	A	Appendix A: PSoC PLD Resource Comparison with Competitive CPLDs.....	21	
4	Example Project .....	6	B	Appendix B: Macrocell Configuration Diagrams .....	22	
4.1	Create Verilog Component: Counter4Bit.....	8	C	Appendix C: Sequence Detector Verilog Code.....	23	
4.2	Create Verilog Component: SeqDetector.....	15	D	Appendix D: Post-Build Design Considerations.....	26	
5	Datapath vs. PLD-based Designs.....	19	Worldwide Sales and Design Support.....			28
6	Summary .....	19				

## 1 Introduction

PSoC 3, PSoC 4, PSoC 5LP, and PSoC 6 MCU (hereafter referred to as PSoC) are more than just microcontrollers. With PSoC you can integrate the functions of a microcontroller, complex programmable logic device (CPLD), and high-performance analog with unmatched flexibility. This saves cost, board space, power, and development time.

**Note:** This application note does not apply to devices that do not have UDBs, consult the device datasheet to determine if your device has UDBs.

This application note introduces the PLDs in the PSoC Universal Digital Block (UDB), and then teaches how to use them by creating PSoC Creator components. It is an effective first step in porting complex programmable logic device (CPLD) functionality to PSoC. After reading this application note, you should be familiar with PSoC PLDs, and be able to create your own custom Verilog-based components using PSoC Creator.

To take full advantage of PSoC's digital features, the next step is to read [AN82156 – PSoC 3, PSoC 4 and PSoC 5LP Designing PSoC Creator Components with UDB Datapaths](#).

This is an advanced application note – it assumes familiarity with PSoC and PSoC Creator. If you are new to PSoC, see introductions in:

- [AN54181 Getting Started with PSoC 3](#)
- [AN79953 Getting Started with PSoC 4](#)
- [AN77759 Getting Started with PSoC 5LP](#)
- [AN221774 Getting Started with PSoC 6 MCUs](#)

If you are new to PSoC Creator, see:

- [PSoC Creator home page](#)

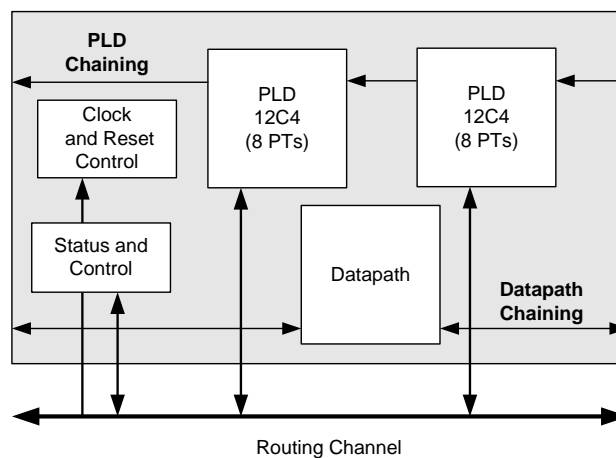
**Note:**

This application note also assumes a basic understanding of digital design and Verilog. If you are new to these concepts, see [AN81623 – PSoC 3 and PSoC 5LP Digital Design Best Practices](#) and [KBA86336 – Just Enough Verilog for PSoC](#). The [References](#) section lists related PSoC digital design resources.

## 2 PSoC UDBs

PSoC implements programmable logic through an array of small, fast, low-power digital blocks called Universal Digital Blocks (UDBs). PSoC devices have as many as 24 UDBs. As shown in [Figure 1](#), a UDB consists of two small programmable logic devices (PLDs), a datapath module, and status and control logic.

Figure 1. UDB Block Diagram



Programmable logic, as the name implies, is a family of devices that contain arrays of logic elements: AND, OR, INVERT, and FLIP-FLOP. In general, a PLD is a circuit that can be configured to perform a specific logic function.

PSoC PLDs can be used to form registered or combinatorial sum of products logic, lookup tables, multiplexers, state machines, and as control for datapath operations. For more information on UDB datapaths, see [AN82156](#).

### 2.1 Architecture of PLDs in PSoC UDB

PSoC PLDs, like most standard PLDs, consist of an AND array followed by an OR array, both of which are programmable. This is commonly referred to as a sum of products architecture.

There are 12 inputs which feed across eight product terms (PTs) in the AND array. In each PT, either the true (T) or complement (C) of the input can be selected. The outputs of the PTs are inputs into the OR array. The outputs of the OR gates are fed to macrocells (MC). Macrocells are flip-flops with additional combinatorial logic.

There are two PLDs in each UDB; each with eight PTs and four macrocells, as shown in [Figure 2](#). PSoC has as many as 48 PLDs and thus 192 macrocells and 384 PTs. Each PLD is independent and can be connected through carry chains or to the digital system interconnect (DSI).

[Appendix A](#) compares PSoC PLD resources with similar-sized competitive PLDs.

Figure 2. PSoC PLD Structure

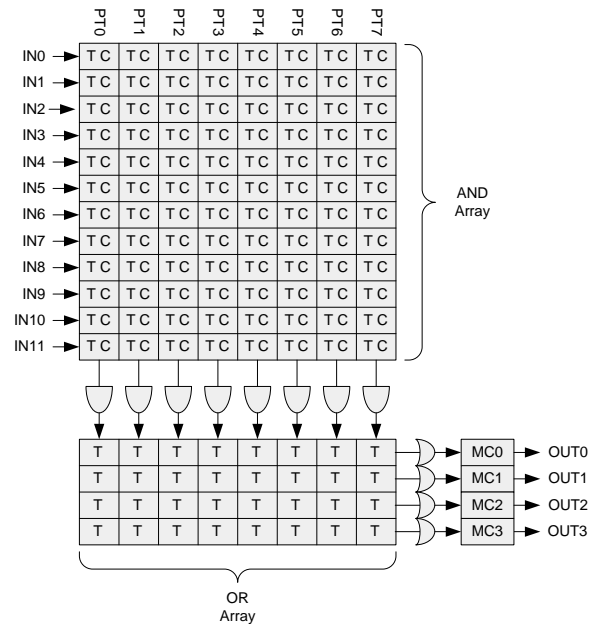
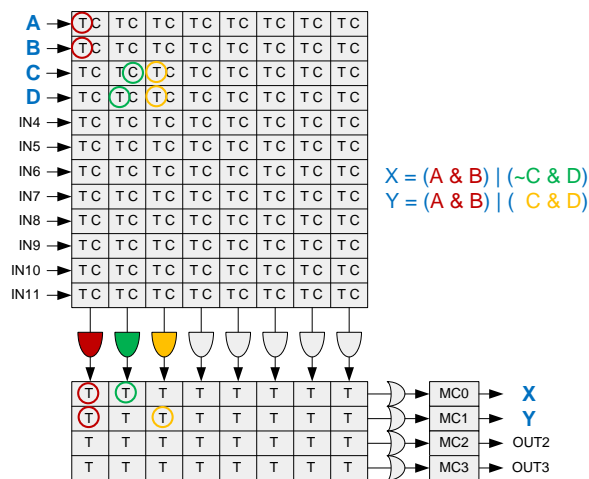


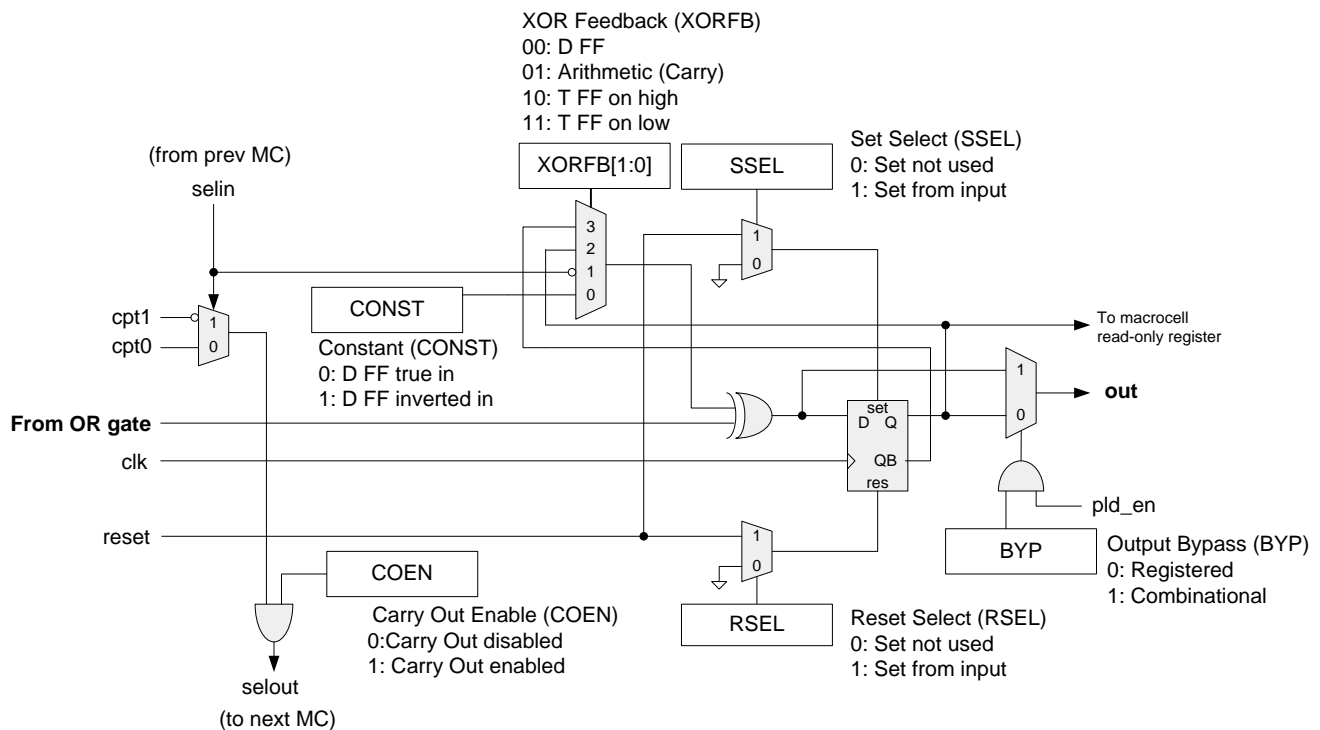
Figure 3 shows an example of logic equations mapped to a PSoC PLD.

Figure 3. Logic Equations Mapped to the PLD



The macrocell architecture is shown in Figure 4. The macrocell output can be registered or combinatorial. Appendix B explains the data flow through a macrocell using two examples. For more information, see the Macrocell section of the UDB chapter in the Technical Reference Manual for the device you are using.

Figure 4. PSoC PLD Macrocell Architecture



### 3 PSoC Creator

PSoC Creator provides a schematic-based environment for hardware development. It enables you to implement logic functions and state machines in the UDB PLDs via two broad methods:

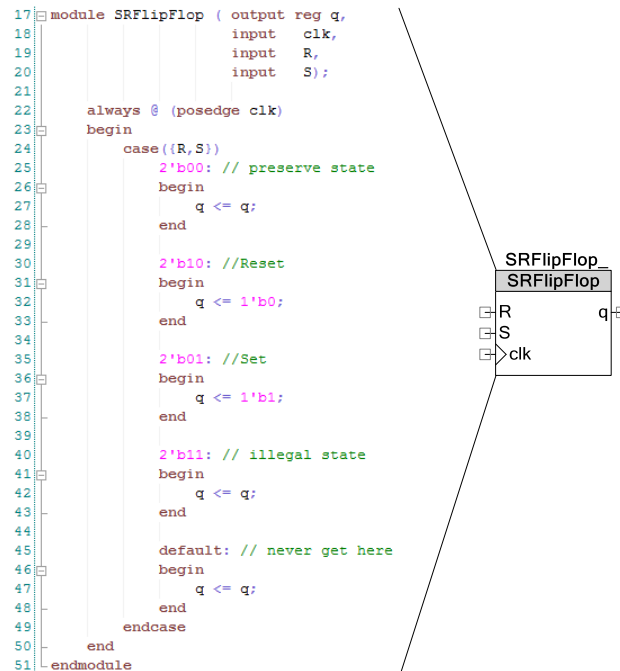
1. **Verilog:** PSoC Creator supports Verilog, which is a hardware description language (HDL). Using Verilog, you can implement digital functions, which then map to the PSoC UDBs. This process uses the Warp™ synthesis tool, which is a Verilog compiler included with PSoC Creator.

In this application note, you will learn how to create Verilog-based components (see [Figure 5](#)).

To learn about Verilog, see KBA86336 – Just Enough Verilog for PSoC.

**Note:** For information about Warp, see the Warp Verilog Reference Guide in PSoC Creator, under **Help > Documentation**.

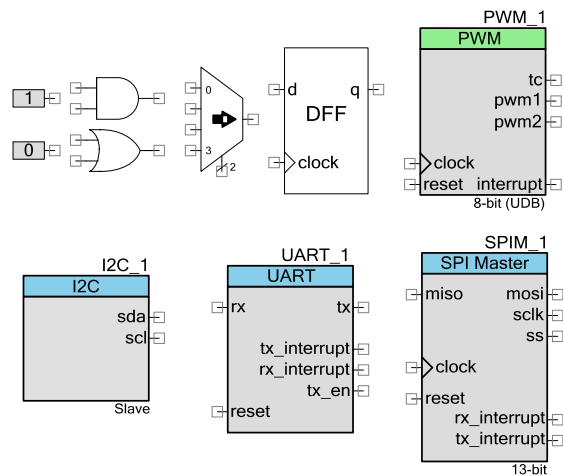
Figure 5. Verilog-based Component



**Schematic:** This process involves wiring individual gates (AND, OR, XOR, NOT), DFFs and other digital logic blocks to perform required functions. PSoC Creator offers gate symbols for all logic operations, as well as multiplexers, lookup tables (LUTs), and other simple PLD-based functions.

PSoC Creator also provides a library of pre-built and tested standard peripheral components. These components are mapped onto the UDB array, which includes both PLDs and datapaths. Some of these components are shown in [Figure 6](#). Using these components is the quickest and simplest way to use the PLD capabilities of the PSoC without using Verilog.

Figure 6. Digital Components in PSoC Creator



## 4 Example Project

One of the best ways to learn about PSoC is to use it. This example project teaches the steps to create simple PLD-based Verilog components.

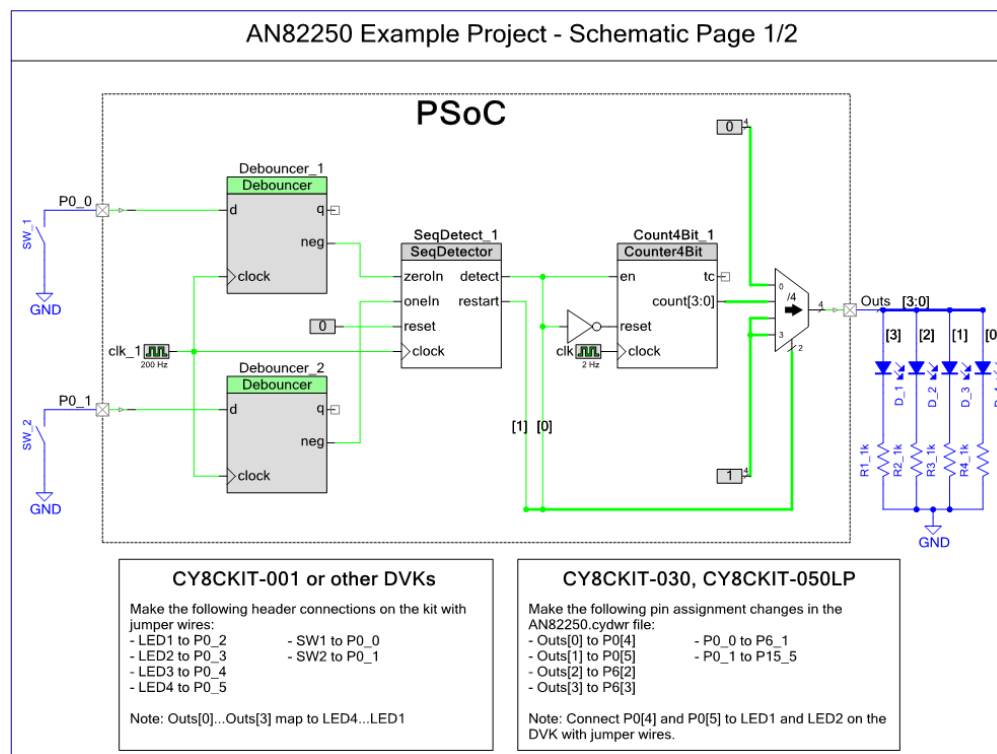
To begin, download the AN82250.zip file from the application note [landing page](#). To view the project, unzip the folder and then open the AN82250.cywrk file in PSoC Creator. The project is designed to work with PSoC 5LP on the [CY8CKIT-001](#) PSoC development kit (DVK) by following the instructions on the schematic. With minor modifications, it can be run on other development platforms. Build and program this project onto the PSoC DVK.

This example project implements a 5-bit sequence detector completely in hardware – no firmware is required. For details of the schematic, see [Figure 7](#). An important feature of this project is that, with the exception of the clocks and pins, all the components shown on the schematic are implemented in the UDB PLDs.

The project takes a binary pattern as its input. Two push-button switches on the PSoC DVK generate the pattern. A button press on switch 'SW\_1' is interpreted as logic 0 and a press on switch 'SW\_2' is interpreted as logic 1. Four outputs drive LEDs on the DVK to indicate the detector status.

On resetting the PSoC, the LEDs glow to indicate that the PSoC is ready for an input (that is, a switch press). The PSoC then follows the state diagram shown in [Figure 8](#). If you enter an incomplete, but correct sequence, the LEDs turn off indicating that you have entered a partial sequence. A wrong switch press causes the four LEDs to turn on. If you enter the complete 5-bit sequence correctly, the LEDs begin counting in a binary fashion.

Figure 7. TopDesign Schematic for the Example Project



The signal flow from input to output is as follows:

- The two push-button switch inputs are debounced and edge-detected using the debouncer Component. Update PSoC Creator to Component Pack 4 or later to access this component.
- The input pins are configured as resistive pull-up. The push-button inputs thus transition from high to low on a switch press event. Hence, the debouncer's 'negative edge detect' output is used to indicate a valid switch press.
- These signals then go to the SeqDetector component, which is configured to detect a sequence of 10110. This pattern can be changed by entering a value between 0 (00000) and 31 (11111) in the component customizer (see [Figure 9](#)).

- If the entire sequence is entered correctly, the 'detect' output is asserted. Even if a single wrong entry is made, the restart output is asserted.
- The 4-bit counter begins to count when the 'detect' signal is asserted; otherwise, it is held in reset. The counter's period can be adjusted by entering a desired 4-bit period value between 1 and 15 in the component customizer (see [Figure 10](#)).
- The 'restart' and 'detect' signals control the output mux to drive four LEDs based on the state diagram in [Figure 8](#).

Figure 8. State Diagram for Example Project

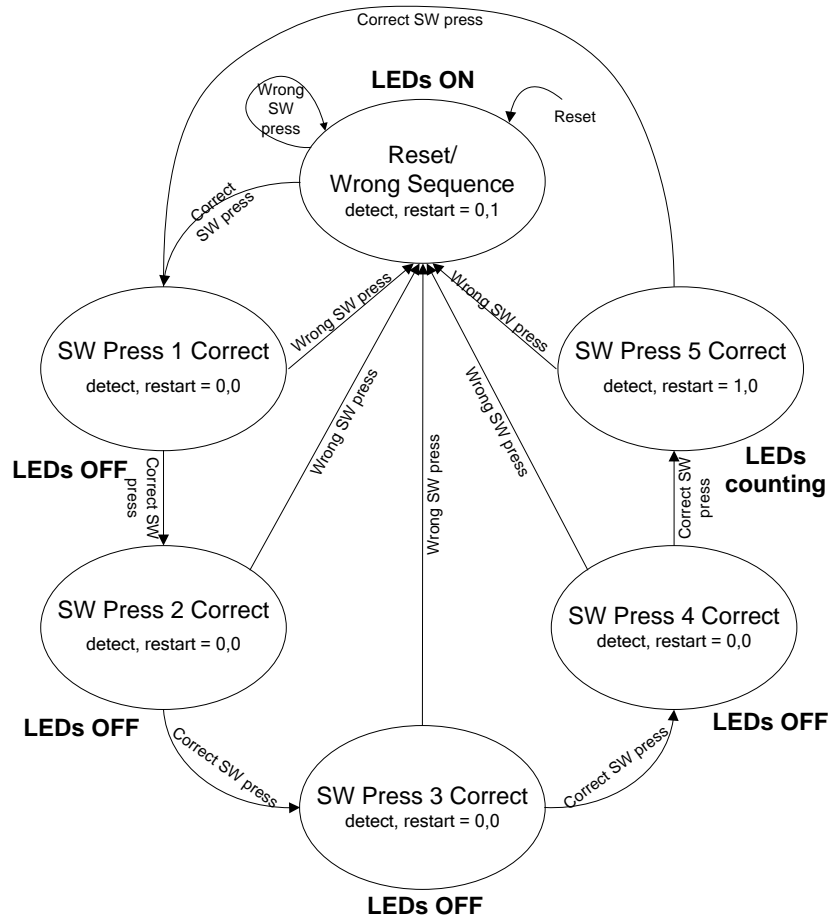




Figure 9. SeqDetector Component Customizer

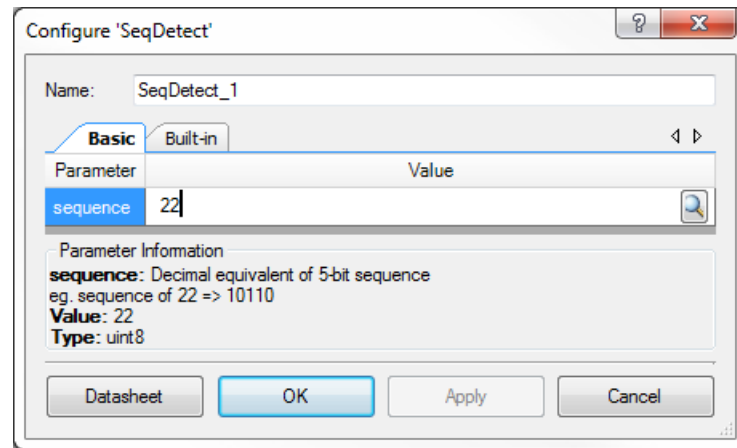
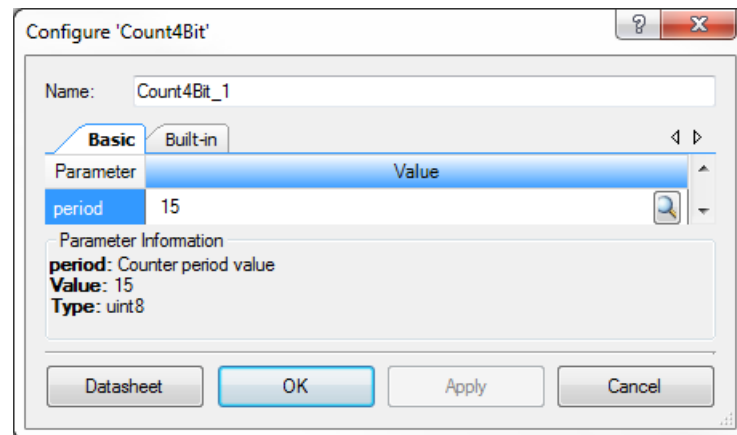


Figure 10. Counter Component Customizer



**Note:** To view the Verilog files for the 4-bit counter and sequence detector components navigate to the **Components** tab of the **Workspace Explorer**.

The key to using the PSoC PLDs effectively is to create Verilog-based components in PSoC Creator. [KBA86338 – Creating a Verilog-based Component](#) summarizes the Verilog-based component creation process. You can become familiar with this process, using the SeqDetector and Counter4Bit components as examples.

## 4.1 Create Verilog Component: Counter4Bit

One of the simplest custom Verilog-based components is a 4-bit up-counter with synchronous reset and enable.

### 4.1.1 4-bit Counter Component Creation Steps

You can use an existing project and add a new component to it, but for this example, use an empty project as a starting point.

1. Launch **PSoC Creator** and start a new project. For this example, 'MyComponents' is used as the project name.
2. In the **Source** tab of the **Workspace Explorer**, right-click on the **MyComponents** workspace and then click **Add > New Project**.
3. To set this new project to be a Component library, in the **Create Project** dialog, select **Library Project** under **Design project**, and click **Next**. In the next window, select the CPU cores this library needs to be built for. Lastly, leave the location as default and change the **Project name**: to "MyLibrary".

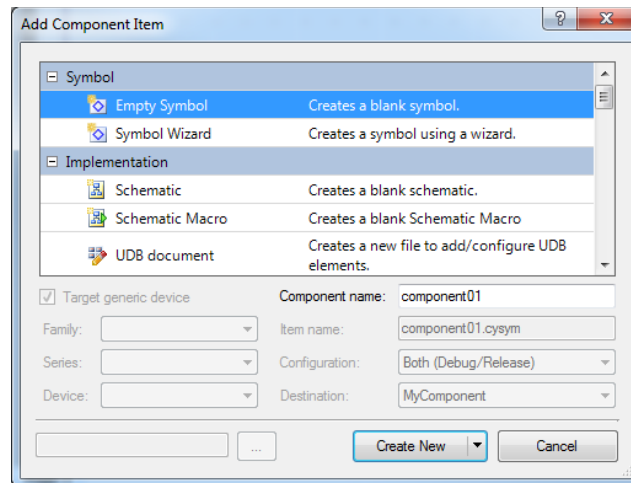
Now add a new component to the library just created:

- On the **Components** tab, right-click on the 'MyLibrary' project and then click **Add Component Item** from the context menu (see Figure 11).

It is good practice to include a version number in the component name. Append to the component name the tag '\_vX\_Y', where 'X' is the major version and 'Y' is the minor version. PSoC Creator has versioning capabilities and helps track multiple versions of your components.

- Select the **Symbol Wizard** component template and name the component 'Count4Bit\_v1\_00'.

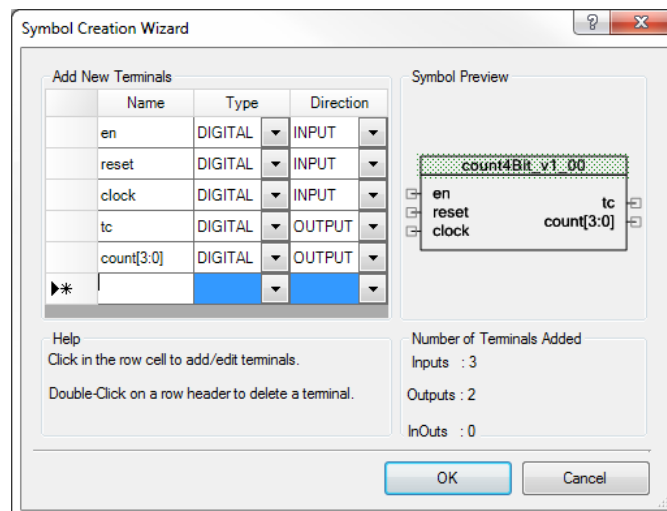
Figure 11. Creating a Custom Component



You can start from an empty symbol, but this example uses the wizard to save time. For more information, see the Component Author Guide under **Help > Documentation**.

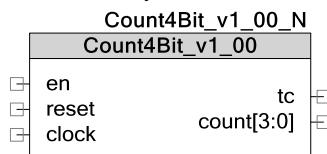
- To launch the component symbol wizard, click the **Create New** button.
- This wizard asks you to define the inputs and outputs, and it uses this information to create a component symbol.
- Define three input terminals and two output terminals for the schematic symbol as shown in Figure 12.

Figure 12. Symbol Creation Wizard for Count4Bit



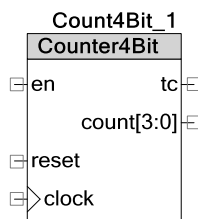
Click **OK** to generate the symbol in the symbol schematic, as shown in Figure 13.

Figure 13. Initial Symbol for 4-bit Counter



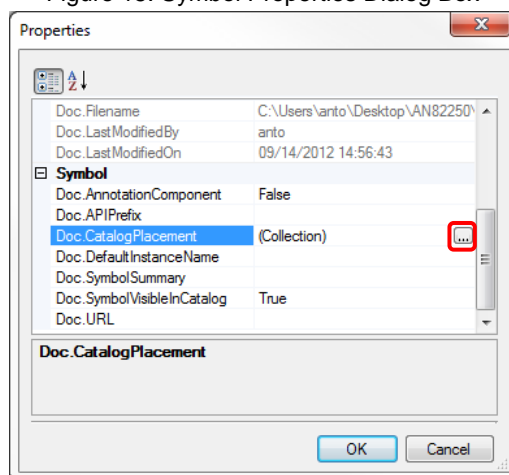
You can resize the component, and modify the appearance of the component, as shown in Figure 14.

Figure 14. 4-Bit Counter Final Symbol



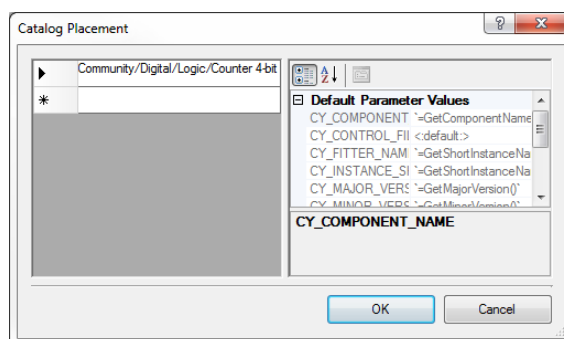
8. Right-click on an empty space in the symbol schematic, and then click **Properties**. In the **Symbol** section of the property fields, click on the ellipsis (...) on **Doc.CatalogPlacement**, as shown in Figure 15.

Figure 15. Symbol Properties Dialog Box



9. Enter Community/Digital/Logic/Counter 4-bit in the **Catalog Placement** dialog, as shown in Figure 16. This places the counter in the **Community** tab of the **Component Catalog** window, under the 'Logic' sub-folder of the 'Digital' folder, with the catalog name of 'Counter 4-bit'.

Figure 16. Setting Catalog Placement

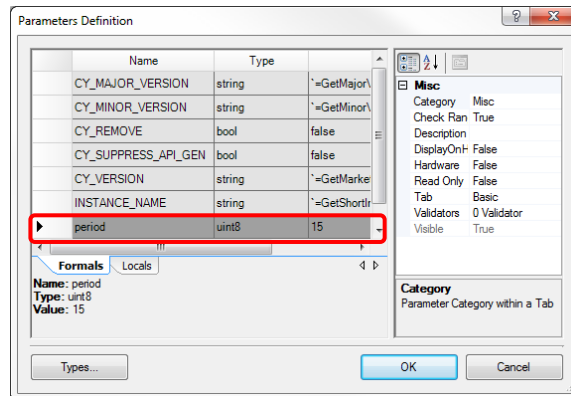


To have a configurable period value for the counter, you must add a component parameter.

10. Right-click on an empty space in the symbol schematic and then click **Symbol Parameters** (see Figure 17).

Specify the *name*, *type*, and default *value* of the parameter as `period`, `uint8`, and `15`, respectively. This parameter allows a user to specify a period value for the counter in its customizer (see [Figure 10](#)).

Figure 17. Symbol Parameters for Count4Bit

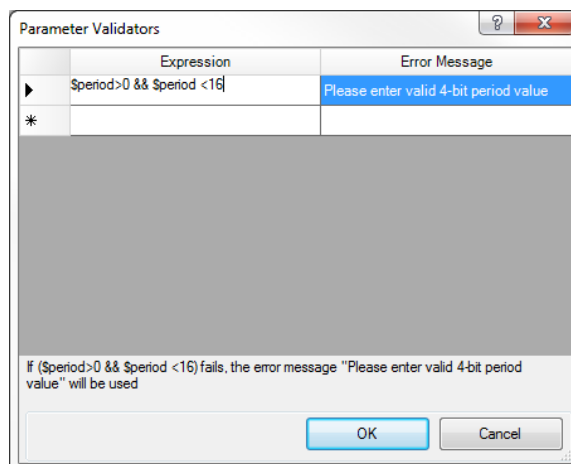


- Enter a description for this parameter by clicking the **Description** field in the **Misc** section of the **Parameter Definition** dialog box.

Set a validator for the parameter by clicking the **Validators** field. A validator checks whether a parameter is within an acceptable input range.

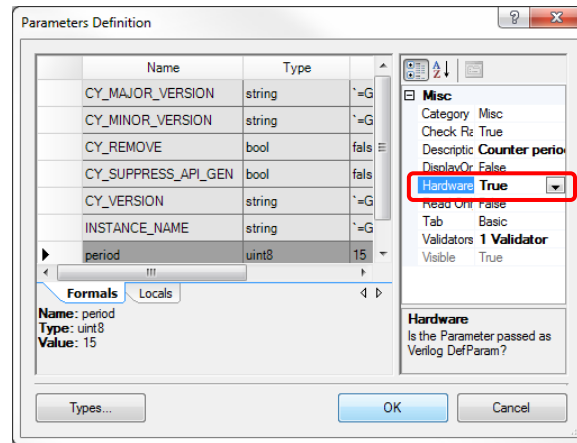
Set a validator to ensure that the period value is between 1 and 15, as shown in [Figure 18](#). Click **OK** to make the changes.

Figure 18. Adding Validators for Count4Bit



- In the **Parameter Definition** dialog box, set the **Hardware** field to **True**, as shown in [Figure 19](#). This is necessary to pass the parameter to the Verilog file.

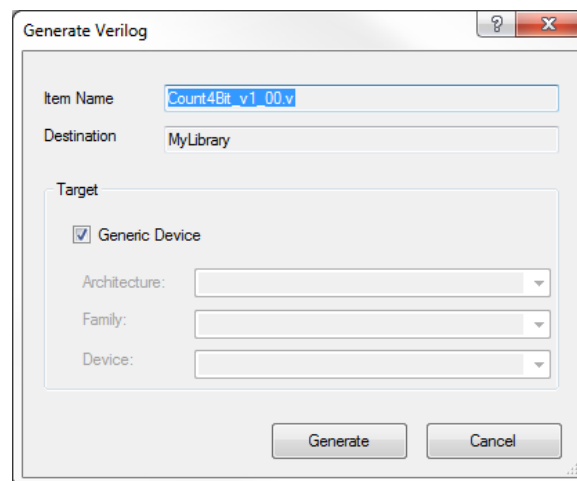
Figure 19. Passing Parameter to Hardware



The next step is to link the schematic symbol to a Verilog file. PSoC Creator generates a Verilog shell based on the component symbol.

13. To do this, right-click on empty space in the symbol schematic and then click **Generate Verilog**. Retain the default settings in the **Generate Verilog** dialog box and click **Generate**, as shown in [Figure 20](#).

Figure 20. Generate the Verilog File for the Symbol



The **Target** values can be used to limit the configuration to a specific device, but for this example use the default setting.

A Verilog file for the symbol just created appears.

**Note** There are three `#start` header - `#end` pairs in the Verilog file. When editing the file, put all your code within these sections. Changes made to the Verilog file outside these three sections will be lost if you regenerate the Verilog file.

You are now ready to describe the counter in Verilog. For reference, the complete code is shown in [Code 1](#).

#### 4.1.2 Verilog Design: 4-bit Counter

First, make the outputs registered. Modify the input/output list of the Count4Bit\_v1\_00 module to:

```
output reg [3:0] count,
output reg tc,
```

**Note** If you regenerate the Verilog file, you must make these changes again. Also, these definitions cannot be made anywhere else in the file.

Then, because this is a synchronous design, add an *always* block (with clock edge) between the `#start` body and `#end` comments in the Verilog file:

```
always @ (posedge clock)
begin
. . .
end
```

**Note** To reduce the likelihood of timing and synchronization failures, it is preferable to use posedge clocking in PSoC designs.

The counter has a synchronous reset which when asserted clears both 'tc' and 'count'.

```
if(reset)
begin
count <= 4'b0000;
tc <= 1'b0;
end
```

**Note** Asynchronous reset/preset signals are supported as well. Refer to the *Warp Verilog Reference Guide* section 3.3.2 for information on asynchronous flip-flop synthesis.

The `en` input signal is a hardware enable. If this input is low the outputs are still active but the component does not change states.

```
if(en)          /* start counting */
begin
. . .
end
else           /* preserve state */
begin
count <= count;
tc <= tc;
end
```

When `count` reaches the period value, the terminal count output `tc` should be at logic 1 as long as `count` is equal to period.

```
if(count == period)
begin
tc <= 1'b1;
count <= 4'b0000;
end
```

Otherwise, the 4-bit counter must count from 0 to `period`, and increment the `count` output every positive clock edge.

```
else
begin
count <= count + 1;
tc <= 1'b0;
end
```

After you finish making changes to the Verilog file, save it. You have now completed the Verilog description for a 4-bit up-counter. The completed code is shown in [Code 1](#).

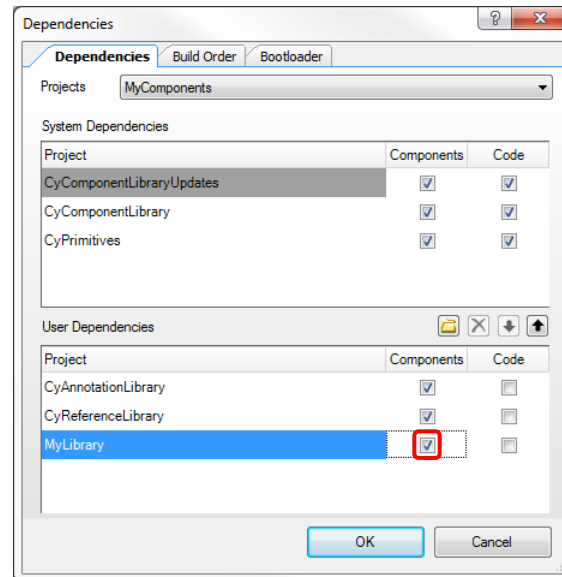
## Code 1. Complete 4-bit Counter Verilog Design

```
module Count4Bit_v1_00 (  
    output reg [3:0] count,  
    output reg tc,  
    input clock,  
    input en,  
    input reset  
);  
  
    parameter period = 0;  
  
    /*#start body` -- edit after this line, do not edit this line  
  
    always @ (posedge clock)  
    begin  
        if(reset)  
        begin  
            count <= 4'b0000;  
            tc <= 1'b0;  
        end  
        else  
        begin  
            if(en)  
            begin  
                if(count == period)  
                begin  
                    tc <= 1'b1;  
                    count <= 4'b0000;  
                end  
                else  
                begin  
                    count <= count + 1;  
                    tc <= 1'b0;  
                end  
            end  
        end  
        else  
        begin  
            count <= count;  
            tc <= tc;  
        end  
    end  
end  
  
    /*#end` -- edit above this line, do not edit this line  
    endmodule
```

To use this component in the 'MyComponents' project, you need to set 'MyLibrary' as a dependency.

To do this, right-click **MyComponents** in the **Source** tab, and select **Dependencies**. Ensure that the checkbox for 'MyLibrary' under **User Dependencies** is checked, as shown in [Figure 21](#).

Figure 21. Adding a Component Library Dependency



To use it in a design, go to the *TopDesign.cysch* file of the MyComponents project and navigate to the **Component Catalog**. The 4-bit counter is located in the **Community** tab. Drag and drop it onto the schematic, and make the required connections.

**Note:** For more information on how to create and use library projects, see PSoC Creator help articles 'Library Component Project' and 'Basic Hierarchical Design Tutorial'.

Continue by creating the sequence detector component in Verilog.

## 4.2 Create Verilog Component: SeqDetector

The SeqDetector component is the heart of this example project. It is a configurable 5-bit binary sequence detector implemented in the PSoC PLDs.

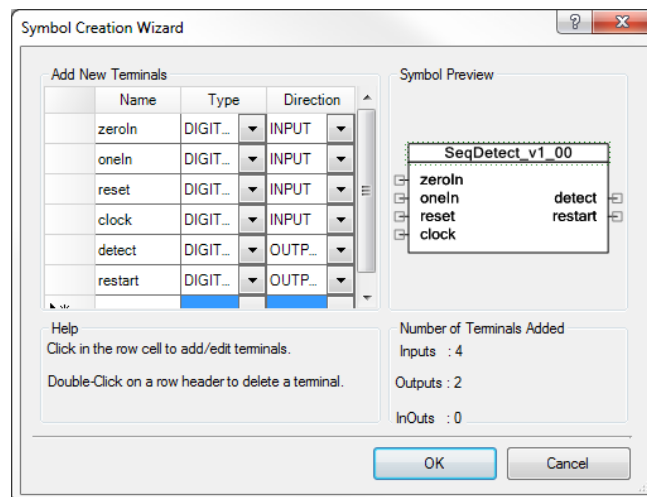
### 4.2.1 SeqDetector Component Creation Steps

The steps to create the SeqDetector are similar to those for the counter.

1. Select the **Components** tab of the **Workplace Explorer**. Right-click the **MyLibrary** project and then click **Add Component Item**.
2. Select the **Symbol Wizard** component template and name the component **SeqDetect\_v1\_00**.
3. Click the **Create New** button to launch the component symbol wizard.
4. Define four input terminals and two output terminals for the schematic symbol, as shown in [Figure 22](#).

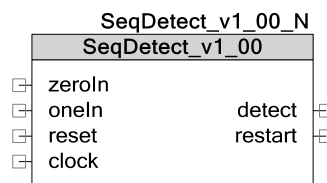


Figure 22. Symbol Creation Wizard for SeqDetector



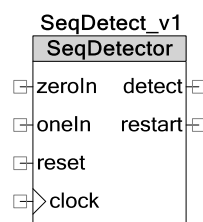
- Click **OK** to generate the symbol in the symbol schematic, as shown in Figure 23.

Figure 23. Sequence Detector Initial Symbol



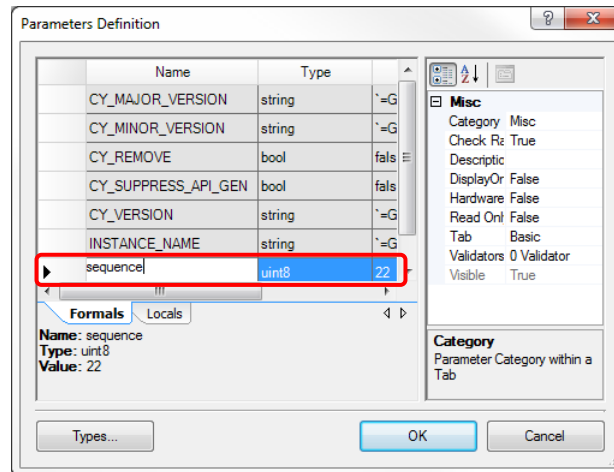
You can resize the component as shown in Figure 24.

Figure 24. Final Symbol for Sequence Detector



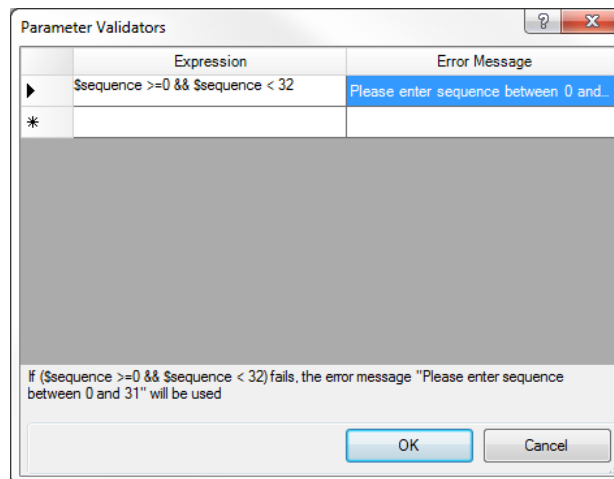
- Right-click on an empty space in the symbol schematic and then click **Properties**.  
In the **Symbol** section of the property fields, click on the ellipsis (...) on **Catalog Placement**. Enter **Community/Digital/Logic/Sequence Detector 5-bit** as the **CatalogPlacement**.  
This places the SeqDetector on the **Community** tab of Component Catalog, under the 'Logic' sub-folder of the 'Digital' folder, with the catalog name 'Sequence Detector 5-bit'.
- To have a configurable sequence value for the SeqDetector, you must add a component parameter.  
Right-click on an empty space in the symbol schematic and then click **Symbol Parameters**.  
Specify the *name*, *type*, and default *value* of the parameter as *sequence*, *uint8*, and *22*, respectively, as shown in Figure 25.

Figure 25. Defining a Parameter for SeqDetect



8. Enter a description for this parameter by clicking the **Description** field in the **Misc** section of the **Parameter Definition** dialog box.
9. Set a validator for the sequence by clicking on the **Validators** field. Set a validator to ensure that the sequence value is between 0 and 31, as shown in Figure 26. Click **OK** to make the changes.

Figure 26. Validator for SeqDetect



10. When you return to the **Parameter Definition** dialog box, set the **Hardware** field to **True**.
11. To do this, right-click on an empty space in the symbol schematic and then click **Generate Verilog**.
12. Leave all settings in the **Generate Verilog** dialog box at the defaults and click **Generate**.

The complete Verilog code for the sequence detector module is included in [Appendix C](#). The next section explains major parts of the code.

#### 4.2.2 Verilog Design: SeqDetector

As with the counter, the first step is to register the outputs in the terminal list of the SeqDetect module:

```
output reg detect,
output reg restart,
```

The backbone of the sequence detector is a state machine with a total of six states ([Figure 8](#)). Create local parameters for each of the states by adding the following code just after the `#start` body comment:

```

localparam START    = 3'd0;
localparam STATE_1  = 3'd1;
localparam STATE_2  = 3'd2;
localparam STATE_3  = 3'd3;
localparam STATE_4  = 3'd4;
localparam DETECT   = 3'd5;

```

Notice that the state definition constants are declared using the `localparam` keyword. This prevents them from conflicting with constants with the same names in other modules.

Declare the state variables as 'register' type and the pattern variable as 'wire' type.

```

reg [2:0] state_curr, state_next;
wire [4:0] pattern = sequence;

```

The sequence detector module has two `always` blocks – a sequential block, and a combinatorial block.

The sequential `always` block models positive edge triggered flip-flops.

The combinatorial `always` block has a sensitivity list defined as:

```

always @ (oneIn or zeroIn or state_curr or pattern)

```

**Note** When writing Verilog for PSoC Creator, the `always` statement must have sensitivity list.

The combinatorial `always` decodes the inputs and assigns the next state based on the inputs and current state. If either a one or zero input is detected, the input is checked, or else the current state is maintained.

For example, the start state looks like:

```

if((oneIn & pattern[4]) ||
   (zeroIn & !pattern[4]))
begin
  state_next <= STATE_1;
end
else
begin
  state_next <= START;
end
end

```

**Note** `pattern[4]` holds the first correct value of the sequence.

The other states are similar – comparing the component inputs to `pattern[3]`, ..., `pattern[0]` in order to decode the next state.

After you finish making changes to the Verilog file, save it. The sequence detector design is now complete. To use it in a design, follow the steps described in the counter section.

## 5 Datapath vs. PLD-based Designs

Communication, timing, and control applications have different requirements in terms of the logic structures underpinning the functions.

As a rule of thumb, the best way to utilize UDB resources is:

- PLDs (Random Logic): Control functions, CPLD-integration, glue logic.
- Datapaths (Structured Logic): Communications, timing, calculations.

For example, consider the following 8-bit arithmetic and logic operations implemented in PLDs versus the datapaths.

Function	Resource Consumption in PLDs Only		Resource Consumption in Datapaths Only	
	PLDs	% Used	DataPath	% Used
ADD8	5	10.4%	1	4.2%
SUB8	5	10.4%	1	4.2%
CMP8	3	6.3%	1	4.2%
SHIFT8	3	6.3%	1	4.2%

**Note** The percentages are calculated from a device with 24 UDBs.

You can implement complex functions in PSoC PLDs, but it is easy to run out of resources if you do not take advantage of the datapath modules.

## 6 Summary

This application note introduced UDB PLDs and explained the design process for Verilog-based component creation in PSoC Creator. After reading this application note, you should understand the PLD architecture, and be able to create your own custom Verilog-based components.

PSoC UDBs provide a flexible and efficient architecture for your digital designs. You can port a wide range of simple to moderately complex logic designs to PSoC PLDs. Designs with high complexity are best implemented by using a combination of both PLDs and datapaths. For more information on the UDB datapaths, read [AN82156](#).

### 6.1 Additional Information

[Appendix A](#) contains a comparison of PSoC PLD and competitive CPLDs with respect to resource count

[Appendix B](#) explains the data flow through a macrocell using two examples.

[Appendix C](#) contains the complete Verilog code for the sequence detector module.

[Appendix D](#) briefly discusses the project report file and static timing analysis.

## 7 Related Resources

### Application notes

[AN82156 - PSoC 3, PSoC 4 and PSoC 5LP Designing PSoC Creator Components with UDB Datapaths](#)

[AN81623 – PSoC 3 and PSoC 5LP Digital Design Best Practices](#)

[AN62510 – Implementing State Machines with PSoC 3 and PSoC 5LP](#)

[AN61290 – PSoC 3 and PSoC 5LP Hardware Design Considerations](#)

[AN72382 – Using PSoC 3 and PSoC 5LP GPIO Pins](#)

[AN60580 – SIO Tips and Tricks in PSoC 3 and PSoC 5LP](#)

[AN54181 – Getting started with PSoC 3](#)

[AN79953 – Getting Started with PSoC 4](#)

[AN77759 – Getting started with PSoC 5LP](#)

[AN221774 Getting Started with PSoC 6 MCUs](#)

### KB Articles

[KBA86336 – Just Enough Verilog for PSoC](#)

[KBA86338 – Creating a Verilog-based Component](#)

[KBA81772 – Adding Component Primitives / Verilog Components to a Project](#)

[Basics of Verilog and Datapath Configuration Tool for Component Creation](#)

### Videos

The following videos introduce the PSoC Creator and Verilog component creation process:

#### Basics

[Creating a New Project](#)

[Using the Start Page](#)

#### Component Creation

[PSoC Creator 113: PLD Based Verilog Components](#)

[Creating a New Component Symbol](#)

[Creating a Verilog Implementation](#)

[Creating a Schematic Implementation](#)

---

## About the Authors

Name:	Vijay Kumar Marrivagu
Title:	Systems Engineer Principal
Background:	Several years of experience in digital design and validation.
Name:	Antonio Rohit De Lima Fernandes
Title:	Applications Engineer
Background:	B.E in EE, BITS, Pilani, Rajasthan, India.

## A Appendix A: PSoC PLD Resource Comparison with Competitive CPLDs

Table 1 compares PSoC PLD resources to similar-sized CPLDs. Remember that this table does not take the programmable logic in the UDB datapath into consideration. When using both the PSoC PLDs and datapaths, PSoC is competitive with much larger CPLDs.

Table 1. PSoC PLD Macrocell Comparison with Competitive PLDs

Device	Macrocells (MCs)	Blocks	MC per Block	Inputs per Block	Product Terms (PTs)	PTerms per Block
<b>Cypress PSoC</b>						
Superset PSoC 3, PSoC 5LP	192	48	4	12	384	8
CY8C42	32	8	4	12	64	8
<b>Altera MAX-II</b>						
EPM240	128 to 240*	24	10	36	*	*
<b>Lattice ispMACH</b>						
4032ZE	32	2	16	36	160	80
4064ZE	64	4	16	36	320	80
40128ZE	128	8	16	36	640	80
<b>Xilinx Coolrunner-II</b>						
XC2C32A	32	2	16	56	112	56
XC2C64A	64	4	16	56	224	56
XC2C128	128	8	16	56	448	56

\* Altera MAX-II is not traditional product term architecture

## B Appendix B: Macrocell Configuration Diagrams

Figure 27 and Figure 28 show the data flow through the macrocell for D flip-flop (D-FF) and T flip-flop (T-FF) functionality, respectively.

Figure 27. Macrocell with D-FF Function Enabled

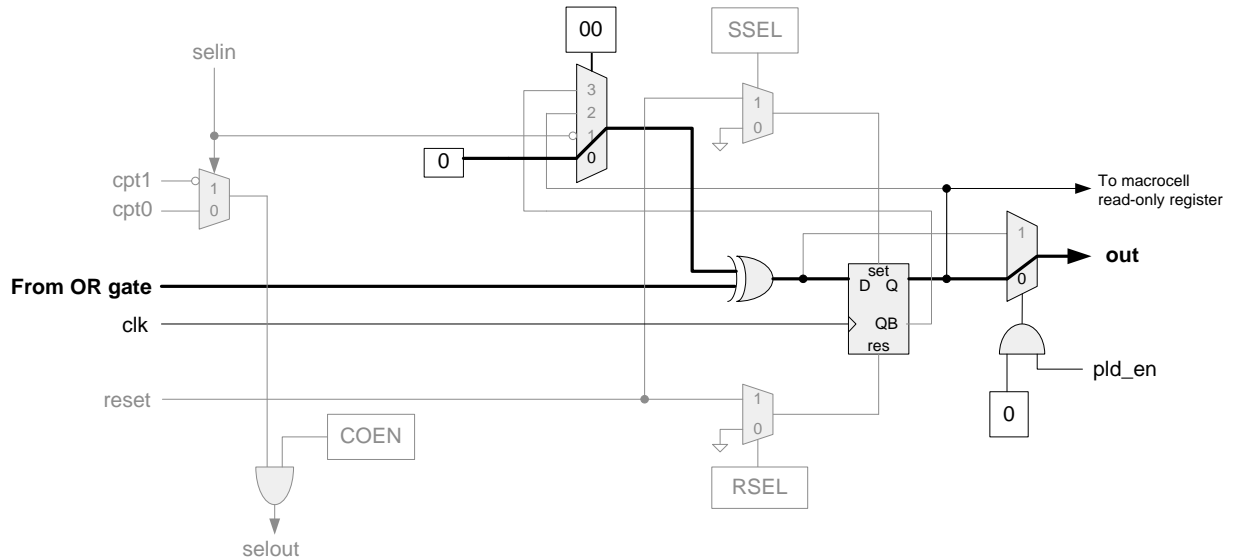
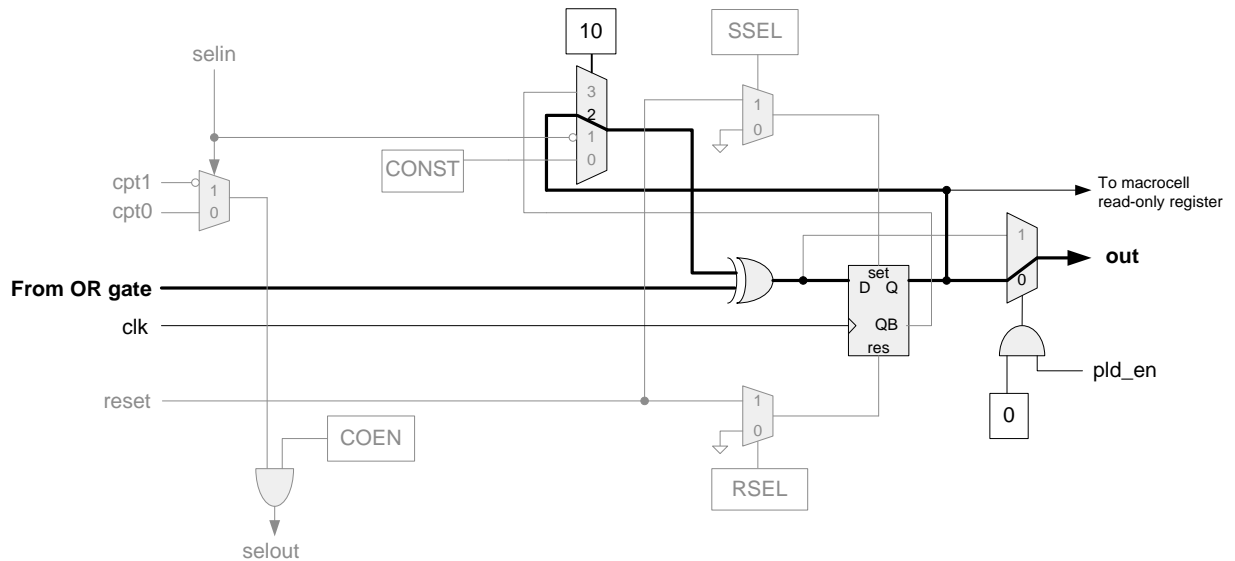


Figure 28. Macrocell with T-FF Function Enabled



## C Appendix C: Sequence Detector Verilog Code

```

module SeqDetect_v1_20 (
    output reg detect,
    output reg restart,
    input  clock,
    input  oneIn,
    input  reset,
    input  zeroIn
);

    /* Note that the value assigned to the parameter in this line
     * has no effect. The actual parameter value is taken from
     * the component customizer.
     */
    parameter sequence = 0;

    //`#start body` -- edit after this line, do not edit this line
    /* Six states are required.
     * The states follow START -> STATE_1 -> ... -> DETECT if the
     * correct inputs are entered. As soon as a wrong input is entered
     * the design jumps to the START state. The states are defined as
     * localparams (instead of `defines) to limit their scope to this
     * module only.
     */
    localparam START    = 3'd0;          /* detect, restart = 0, 1 */
    localparam STATE_1  = 3'd1;          /* detect, restart = 0, 0 */
    localparam STATE_2  = 3'd2;          /* detect, restart = 0, 0 */
    localparam STATE_3  = 3'd3;          /* detect, restart = 0, 0 */
    localparam STATE_4  = 3'd4;          /* detect, restart = 0, 0 */
    localparam DETECT   = 3'd5;          /* detect, restart = 1, 0 */

    /* registered value to hold 3-bit state */
    reg [2:0] state_curr, state_next;

    /* pattern[4:0] holds the user-supplied sequence value
     * suppose sequence = 22 then pattern[4:0] = 5'b10110
     * Note that pattern[4] is the first-entered user input
     */
    wire [4:0] pattern = sequence;

    /* Sequential block of the state machine - outputs are assigned here */
    always @ (posedge clock)
    begin
        /* reset causes the component to enter the START state */
        if(reset)
            begin
                state_curr <= START;
                /* Immediately assign detect and restart values */
                detect <= 1'b0;
                restart <= 1'b1;
            end
        else /* reset is not asserted - go through states */
            begin
                state_curr <= state_next;

                /* Assign 'detect' value - 1 only in DETECT state, 0 otherwise */
                if (state_next == DETECT)
                    begin
                        detect <= 1'b1;
                    end
                else
            end
    end

```



```

    begin
        detect <= 1'b0;
    end

    /* Assign 'restart' value - 1 only in RESTART state, 0 otherwise*/
    if (state_next == START)
    begin
        restart <= 1'b1;
    end
    else
    begin
        restart <= 1'b0;
    end
end

end

/* Finite State Machine combinatorial block - contains most of the
 * combinatorial logic.
 */
always @ (oneIn or zeroIn or state_curr or pattern)
begin
    /* If either a one or zero has been entered, take action */
    if(oneIn | zeroIn)
    begin
        case(state_curr)
            START:          /* Initial state */
            begin
                /* check whether the first bit entered is correct */
                if((oneIn & pattern[4]) || (zeroIn & !pattern[4]))
                begin
                    state_next <= STATE_1; /* advance to the next state */
                end
                else
                begin
                    /* revert to the initial state */
                    state_next <= START;
                end
            end

            STATE_1:        /* First input is correct */
            begin
                if((oneIn & pattern[3]) || (zeroIn & !pattern[3]))
                begin
                    state_next <= STATE_2;
                end
                else
                begin
                    state_next <= START;
                end
            end

            STATE_2:        /* Two inputs are correct */
            begin
                if((oneIn & pattern[2]) || (zeroIn & !pattern[2]))
                begin
                    state_next <= STATE_3;
                end
                else
                begin
                    state_next <= START;
                end
            end
        end
    end
end

```

```

STATE_3:      /* Three inputs are correct */
begin
  if((oneIn & pattern[1]) || (zeroIn & !pattern[1]))
  begin
    state_next <= STATE_4;
  end
  else
  begin
    state_next <= START;
  end
end

STATE_4:      /* Four inputs are correct */
begin
  if((oneIn & pattern[0]) || (zeroIn & !pattern[0]))
  begin
    state_next <= DETECT;
  end
  else
  begin
    state_next <= START;
  end
end

DETECT:      /* All five inputs are correct! */
begin
  /* When in the detect state, if an input is given, show same behavior as START */
  /* check whether the bit entered is the correct beginning to a new sequence*/
  if((oneIn & pattern[4]) || (zeroIn & !pattern[4]))
  begin
    state_next <= STATE_1;
  end
  else /* revert to the initial state */
  begin
    state_next <= START;
  end
end

default:/* we should never get here - reset the component*/
begin
  state_next <= START;
end
endcase

end
else /* if neither 1 or 0 have been entered, stay in same state */
begin
  state_next <= state_curr;
end

end

//`#end` -- edit above this line, do not edit this line
endmodule

```

## D Appendix D: Post-Build Design Considerations

### D.1 Project Report File

Access the project build report (<project\_name>.rpt) from the **Results** tab of the **Workspace Explorer** window. It is created after a successful build. Following are the major sections in the report file.

- Technology mapping summary section – the utilization of macrocells, pterms, datapaths, pins, clock dividers, and so on is shown in [Figure 29](#).

Figure 29. PSoC Creator Project Build Report File

TopDesign.cysch	Design09.cydwr	Mycounter.v	Design09.rpt	
660	-----			
661	Technology mapping summary			
662	-----			
663				
664	Resource Type	: Used	: Free	: Max : % Used
665	=====			
666	Digital domain clock dividers	: 1	: 7	: 8 : 12.50%
667	Analog domain clock dividers	: 0	: 4	: 4 : 0.00%
668	Pins	: 9	: 63	: 72 : 12.50%
669	Macrocells	: 5	: 187	: 192 : 2.60%
670	Unique Pterms	: 5	: 379	: 384 : 1.30%
671	Total Pterms	: 6	:	:
672	Datapath Cells	: 0	: 24	: 24 : 0.00%
673	Status Cells	: 0	: 24	: 24 : 0.00%
674	Control Cells	: 0	: 24	: 24 : 0.00%

- Synthesis Results - Lists the errors and warnings generated at each phase of synthesis: Verilog compilation, parsing, high level synthesis, optimization, and so on. This section contains the details of logic which is optimized away by the synthesizer. This section is useful for debugging and troubleshooting.
- Digital Placement - PLD Packing Summary. [Figure 30](#) shows an example of PLD utilization.

Figure 30. Example PLD Packing Summary Report

PLD Packing Summary				
-----				
	Resource Type	: Used	: Free	: Max : % Used
-----				
	PLDs	: 2	: 46	: 48 : 4.17%

- Digital Placement: PLD Packing Summary: PLD Statistics - [Figure 31](#) shows an example of PLD PTs and macrocells utilization in terms of average per logic array block (LAB).

Figure 31. Example PLD Usage Report

PLD Resource Type	: Average/LAB
-----	
Inputs	: 2.00
Pterms	: 2.50
Macrocells	: 2.50

- Final Placement summary – Gives component details. This section of the report shows UDB utilization, occupancy, statistics, and placement (coordinate) details.

### D.2 Static Timing Analysis

An important part of debugging digital designs is static timing analysis (STA). STA evaluates a digital design and calculates delays between signal outputs and inputs. From those delays it computes the maximum allowable frequency of each clock used in the design.

PSoC Creator automatically creates a static timing analysis report when you build a project. The report shows the critical paths in the design that limit the frequency of each clock. If the calculated maximum frequency is less than the required clock frequency, then a warning displays indicating that a timing violation exists in the design.

For more information on avoiding timing violations and handling PSoC Creator STA warnings, see [AN81623 – PSoC 3 and PSoC 5LP Digital Design Best Practices](#).

## Document History

Document Title: AN82250 - PSoC Creator - Implementing Programmable Logic Designs with Verilog

Document Number: 001-82250

Revision	ECN	Orig. of Change	Submission Date	Description of Change
**	3758092	VJYA	09/27/2012	New Application Note
*A	3774553	VJYA/ANTO	10/11/2012	Changed/Edited Fig1, Fig3, Fig4, Fig9 Added Verilog code for components in the Appendix Minor edits throughout the document Updated component versions to 1.10 Added Verilog Synthesis sub-section to the HDL Coding Guidelines section of the appendix
*B	3811941	VJYA/ANTO	11/14/2012	Changed Title Modified abstract Deleted appendices C-F, section on build settings Added appendix A in this document. Moved section on project report file and STA to appendix D. Optimized code for sequence detector Enhanced figures 2,3,4, 14, 15, 16, 25, 26; added figures 5,6, 23 Updated for PSoC 5LP Minor modifications throughout the document
*C	3841114	VJYA/ANTO	12/13/2012	Added Appendix A – comparison of PSoC PLD resources with similar-size CPLDs Moved Appendix containing counter Verilog code to main body of text (Code 1)
*D	3943324	ANTO	03/25/2013	Updated for PSoC 4 and PSoC Creator 2.2 SP1 Added references to KB articles esp. Just Enough Verilog for PSoC. Minor changes throughout the document
*E	4514150	TDU	09/25/2014	Updated the associated project to PSoC Creator 3.0 SP1 Updated <a href="#">Figure 7</a>
*F	4541956	RLOS	11/06/2014	Updated the Software Version on page 1 to PSoC Creator 3.0 SP1 or later. Updated the associated project files.
*G	4848733	TDU	10/06/2015	Updated to new template. Added a note in Step 1 and Step 4 of <a href="#">4-bit Counter Component Creation Steps</a> . Added a note in <a href="#">Datapath vs. PLD-based Designs</a> .
*H	5068178	RNJT	12/30/2015	Updated the associated project to PSoC Creator 3.3 SP1
*I	5701881	BENV	04/19/2017	Updated logo and copyright
*J	6385371	TDU	12/05/2018	Adding PSoC 6 MCU, Updating Images for Creator 4.2

## Worldwide Sales and Design Support

Cypress maintains a worldwide network of offices, solution centers, manufacturer's representatives, and distributors. To find the office closest to you, visit us at [Cypress Locations](#).

### Products

Arm® Cortex® Microcontrollers	<a href="http://cypress.com/arm">cypress.com/arm</a>
Automotive	<a href="http://cypress.com/automotive">cypress.com/automotive</a>
Clocks & Buffers	<a href="http://cypress.com/clocks">cypress.com/clocks</a>
Interface	<a href="http://cypress.com/interface">cypress.com/interface</a>
Internet of Things	<a href="http://cypress.com/iot">cypress.com/iot</a>
Memory	<a href="http://cypress.com/memory">cypress.com/memory</a>
Microcontrollers	<a href="http://cypress.com/mcu">cypress.com/mcu</a>
PSoC	<a href="http://cypress.com/psoc">cypress.com/psoc</a>
Power Management ICs	<a href="http://cypress.com/pmic">cypress.com/pmic</a>
Touch Sensing	<a href="http://cypress.com/touch">cypress.com/touch</a>
USB Controllers	<a href="http://cypress.com/usb">cypress.com/usb</a>
Wireless Connectivity	<a href="http://cypress.com/wireless">cypress.com/wireless</a>

### PSoC® Solutions

[PSoC 1](#) | [PSoC 3](#) | [PSoC 4](#) | [PSoC 5LP](#) | [PSoC 6 MCU](#)

### Cypress Developer Community

[Community](#) | [Code Examples](#) | [Projects](#) | [Videos](#) | [Blogs](#)  
| [Training](#) | [Components](#)

### Technical Support

[cypress.com/support](http://cypress.com/support)

All other trademarks or registered trademarks referenced herein are the property of their respective owners.



Cypress Semiconductor  
198 Champion Court  
San Jose, CA 95134-1709

© Cypress Semiconductor Corporation, 2012-2018. This document is the property of Cypress Semiconductor Corporation and its subsidiaries, including Spansion LLC ("Cypress"). This document, including any software or firmware included or referenced in this document ("Software"), is owned by Cypress under the intellectual property laws and treaties of the United States and other countries worldwide. Cypress reserves all rights under such laws and treaties and does not, except as specifically stated in this paragraph, grant any license under its patents, copyrights, trademarks, or other intellectual property rights. If the Software is not accompanied by a license agreement and you do not otherwise have a written agreement with Cypress governing the use of the Software, then Cypress hereby grants you a personal, non-exclusive, nontransferable license (without the right to sublicense) (1) under its copyright rights in the Software (a) for Software provided in source code form, to modify and reproduce the Software solely for use with Cypress hardware products, only internally within your organization, and (b) to distribute the Software in binary code form externally to end users (either directly or indirectly through resellers and distributors), solely for use on Cypress hardware product units, and (2) under those claims of Cypress's patents that are infringed by the Software (as provided by Cypress, unmodified) to make, use, distribute, and import the Software solely for use with Cypress hardware products. Any other use, reproduction, modification, translation, or compilation of the Software is prohibited.

TO THE EXTENT PERMITTED BY APPLICABLE LAW, CYPRESS MAKES NO WARRANTY OF ANY KIND, EXPRESS OR IMPLIED, WITH REGARD TO THIS DOCUMENT OR ANY SOFTWARE OR ACCOMPANYING HARDWARE, INCLUDING, BUT NOT LIMITED TO, THE IMPLIED WARRANTIES OF MERCHANTABILITY AND FITNESS FOR A PARTICULAR PURPOSE. No computing device can be absolutely secure. Therefore, despite security measures implemented in Cypress hardware or software products, Cypress does not assume any liability arising out of any security breach, such as unauthorized access to or use of a Cypress product. In addition, the products described in these materials may contain design defects or errors known as errata which may cause the product to deviate from published specifications. To the extent permitted by applicable law, Cypress reserves the right to make changes to this document without further notice. Cypress does not assume any liability arising out of the application or use of any product or circuit described in this document. Any information provided in this document, including any sample design information or programming code, is provided only for reference purposes. It is the responsibility of the user of this document to properly design, program, and test the functionality and safety of any application made of this information and any resulting product. Cypress products are not designed, intended, or authorized for use as critical components in systems designed or intended for the operation of weapons, weapons systems, nuclear installations, life-support devices or systems, other medical devices or systems (including resuscitation equipment and surgical implants), pollution control or hazardous substances management, or other uses where the failure of the device or system could cause personal injury, death, or property damage ("Unintended Uses"). A critical component is any component of a device or system whose failure to perform can be reasonably expected to cause the failure of the device or system, or to affect its safety or effectiveness. Cypress is not liable, in whole or in part, and you shall and hereby do release Cypress from any claim, damage, or other liability arising from or related to all Unintended Uses of Cypress products. You shall indemnify and hold Cypress harmless from and against all claims, costs, damages, and other liabilities, including claims for personal injury or death, arising from or related to any Unintended Uses of Cypress products.

Cypress, the Cypress logo, Spansion, the Spansion logo, and combinations thereof, WICED, PSoC, CapSense, EZ-USB, F-RAM, and Traveo are trademarks or registered trademarks of Cypress in the United States and other countries. For a more complete list of Cypress trademarks, visit [cypress.com](http://cypress.com). Other names and brands may be claimed as property of their respective owners.