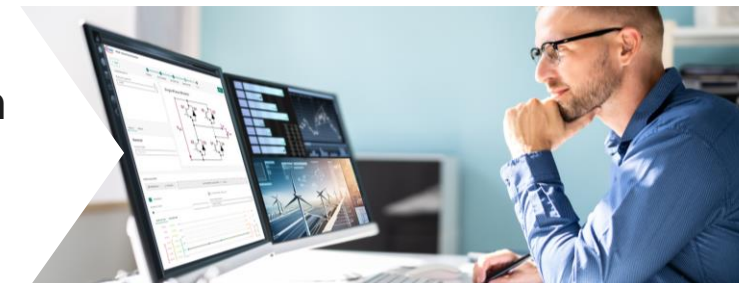


How-to- access IPOSIM with SPICE

IPOSIM is getting SPICE

Simulate now your system closer to real-world operating conditions with the **New PLECS model generation out of SPICE directly in IPOSIM!**



IPOSIM with SPICE now accounts for the complexities of your specific external circuitry setup and particular gate driver used, enabling you to simulate, test and optimize your system design with **a higher degree of accuracy**, thereby **reducing development time and costs**.

More realistic operating conditions to support their selection decision

Main Features:

- ✓ **Customize your own application environment** setup, tailoring for deadtime, stray inductance and gate voltage.
- ✓ Design support with **higher system accuracy**
- ✓ Model generation taking into account **your** choice of **gate driver**.



Higher system accuracy



Speed-up development



Reduce design iterations

Where? Online & free of charge. Go to:  **iposim.infineon.com**

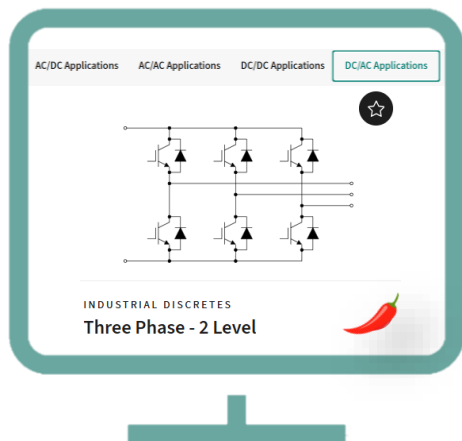
Generate your own custom PLECS model out of SPICE

How to find IPOSIM with SPICE?

Simply follow the 🌶️ icon in IPOSIM to simulate with higher accuracy.



Topology



Select one of the **topologies** available for custom model generation



Device Selection

☒ 🌶️ My Model support only

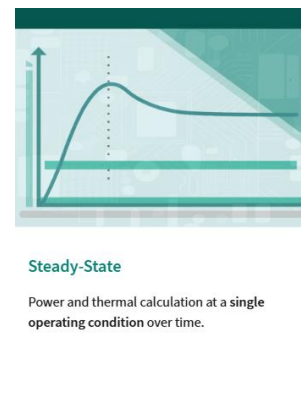
Device Name		
<input type="radio"/>	IMW120R040M1H	🌶️
<input type="radio"/>	IMBG120R034M2H	🌶️
<input type="radio"/>	IMBG120R026M2H	🌶️
<input type="radio"/>	IMW120R020M1H	🌶️
<input type="radio"/>	IMW120R014M1H	🌶️
<input type="radio"/>	IMW120R007M1H	🌶️

Select the **switch device(s)** available for custom model generation

Note: you can select more than one set-up



Simulation Type



Select the **Simulation Type** as usual

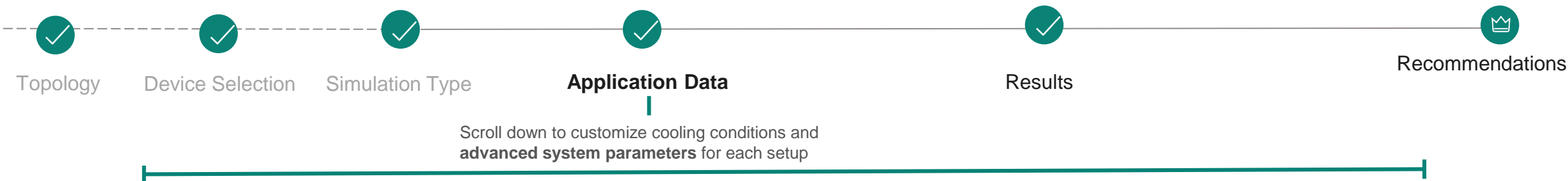
Application Data

Results

Generate your own custom PLECS model out of SPICE

How to find IPOSIM with SPICE?

Simply follow the 🌶️ icon in IPOSIM to simulate with higher accuracy.



1 Select the type of model

System parameters

Select model

Default

Default

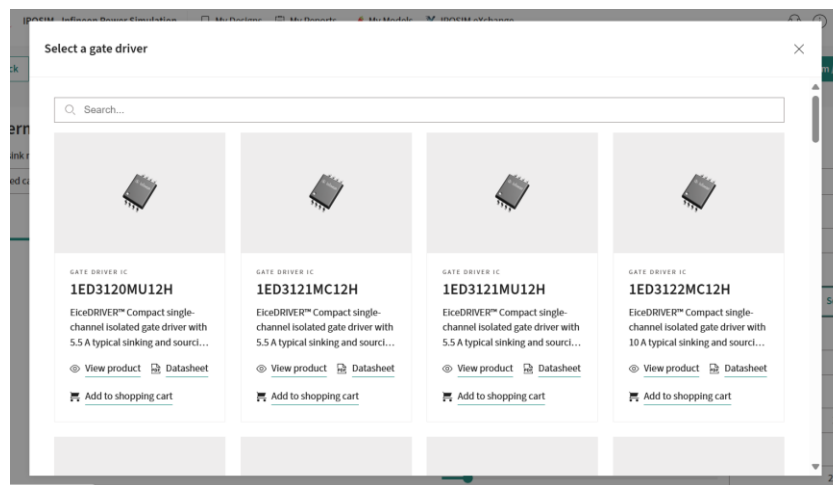
Generate custom model

2 Give a name to your custom model

Model name

My Spice Model

3 Select a Gate Driver



4 Customize advanced application parameters: rg (on/off) Vgs, td, lo.

Turn-off gate voltage
 V

Turn-on gate voltage
 V

Turn-on gate resistor R_{Gon}
 Ω ⓘ

Turn-off gate resistor R_{Goff}
 Ω ⓘ

DC-link stray inductance
 nH

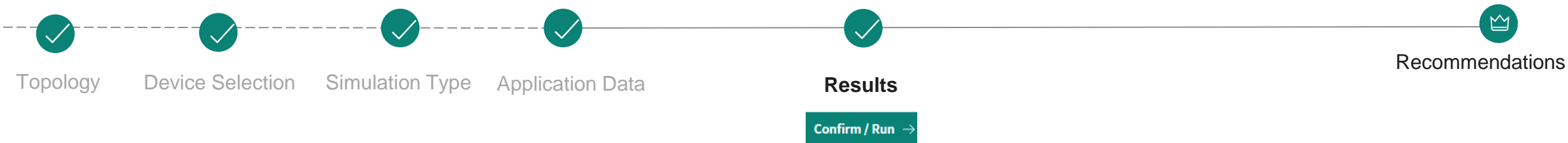
Dead time
 ns

- Default: standard plects xml model (based on datasheet)
- Custom model: plects model generation (powered by SPICE)

Generate your own custom PLECS model out of SPICE

How to find IPOSIM with SPICE?

Simply follow the 🌶️ icon in IPOSIM to simulate with higher accuracy.



Simulation results



Option to download xml file

