

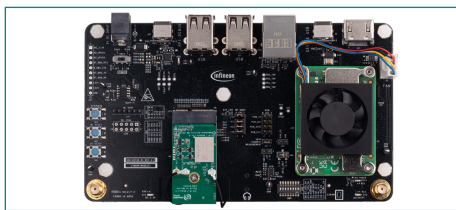
QUICK START GUIDE

Wi-Fi & Bluetooth® Evaluation Kit with Raspberry Pi CM4 Host

CYW9RPIWIFIBT-EVK

Kit contents

1. CYW9RPIWIFIBT-EVK evaluation board
(with Raspberry Pi CM4 module and CYW955573 radio M.2 card)
2. Two tri-band dipole antenna
3. USB-C to USB-C cable
4. Quick start guide (this document)



www.infineon.com/CYW9RPIWIFIBT-EVK



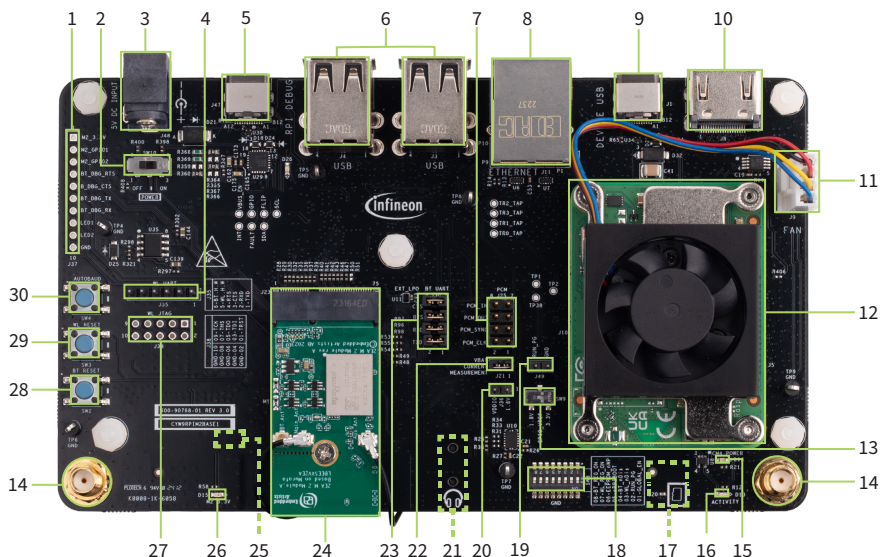
3 **USB-UART COM port Setup**

Getting started with serial console access

To access the serial debug console of the CYW9RPIWFIBT-EVK kit, do the following:

1. Ensure that you have the following:
 - PC with Type-C USB port
 - UART terminal software such as Tera Term or Minicom
2. Connect the kit to the PC through the USB Type-C port (J47) using the USB cable provided.
3. Turn on the power switch (SW10) and check for the CM4 power LED (D14), M.2 VBAT LED (D15) to glow and the activity LED (D13) to blink.
4. Open the UART terminal software and connect to the kit's USB-to-UART COM port with the following settings:
 - Baud rate: 115200, Data: 8 bit, Parity: None, Stop bit: 1 bit, Flow control: None
5. Power cycle the board and check for the boot logs on the terminal. Once boot is complete, enter the below credentials to access the console.
 - Username: ifx
 - Password : ifx

CYW9RPIWIFIBT-EVK Evaluation Board details



- | | |
|---|---|
| 1 M.2 GPIO header (J37)** | 16 CM4 activity LED (D13) |
| 2 Power on/off switch (SW10) | 17 Micro SD card connector (J17)* |
| 3 5 V DC jack (J48) | 18 DIP control switches (SW8) |
| 4 WL UART connector (J35) | 19 CM4 reset jumper (J49) |
| 5 Raspberry-Pi debug USB Type-C connector (J47) | 20 M.2 VDDIO current measurement jumper (J36) |
| 6 4 x USB Type-A connectors (J3, J4) | 21 Audio out jack (J46)* |
| 7 PCM connector (J25) | 22 M.2 VBAT isolation jumper (J21) |
| 8 1G ethernet connector (J11) | 23 Bluetooth® UART connector (J30) |
| 9 Device USB Type-C connector (J1) | 24 2EA M.2 radio module |
| 10 HDMI connector (J8) | 25 M.2 VBAT voltage select switch (SW5)* |
| 11 Fan connector (J9) | 26 M.2 3.3 V power LED (D15) |
| 12 Raspberry Pi CM4 module | 27 WL JTAG connector (J38)** |
| 13 CM4 GPIO voltage select switch (SW9) | 28 Bluetooth® reset button (SW2) |
| 14 Antenna connectors (ANT1, ANT2) | 29 WLAN reset button (SW3) |
| 15 CM4 power LED (D14) | 30 Autobaud button (SW4) |

*Component is located at the bottom side of the board.

**Component is not mounted on the board.