

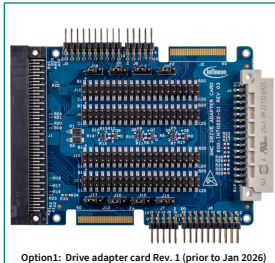
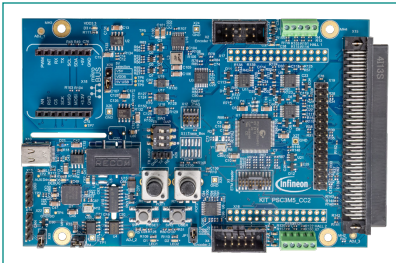
QUICK START GUIDE

PSOC™ Control C3M5 Motor Drive Control Card

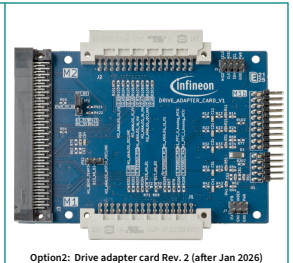
KIT_PSC3M5_CC2

Kit contents

1. KIT_PSC3M5_CC2 motor control card
2. XMC™ drive adapter card
3. USB Type-A to USB Type-C cable
4. Quick start guide (this document)

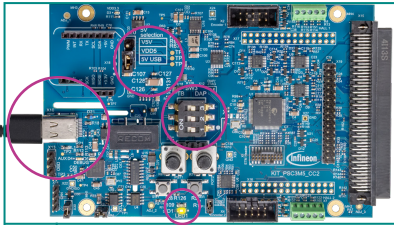


Option1: Drive adapter card Rev. 1 (prior to Jan 2026)



Option2: Drive adapter card Rev. 2 (after Jan 2026)

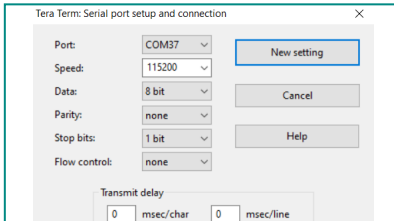




- 1 USB cable connected to the J-Link USB connector

Hardware setup

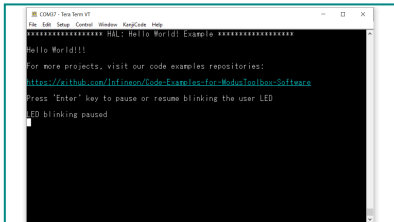
1. The power supply jumper (X20) should be connected between VDD5 and 5V USB.
2. Make sure all the micro switches of SW3 are towards the right side for proper operation.



- 2 USB-UART COM port setup

Connect the kit with the UART terminal software

1. Open the UART terminal software such as Tera Term or Minicom and connect to the kit's USB-UART COM port using the following settings:
 - Baud rate: 115200, Data: 8 bit, Parity: None, Stop bit: 1 bit, Flow control: None
2. Press the reset button (SW1) to reset the device.



- 3 Demo application

Run the pre-programmed code example

1. Observe that the “Hello World” message is displayed on the serial terminal and ensure that the user LED1 (D1) blinks continuously.
2. Press the enter key to pause or resume the blinking of the user LED1.
3. Follow the instructions shown in the boot-up message (see the figure).

Next steps

- The ModusToolbox™ software supports this kit and the associated code examples.
- Visit the [kit website](#) and [ModusToolbox™ webpage](#) for more information on code examples supported for this kit and the kit documentation.

Trademarks

All referenced product or service names and trademarks are the property of their respective owners.. PSOC™, formerly known as PSoC™, is a trademark of Infineon Technologies. Any references to PSoC™ in this document or others shall be deemed to refer to PSOC™.