

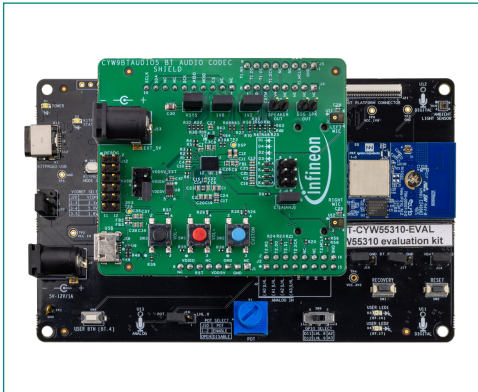
QUICK START GUIDE

AIROC™ CYW55310 Bluetooth® Audio Development Kit

KIT-CYW55310-EVAL

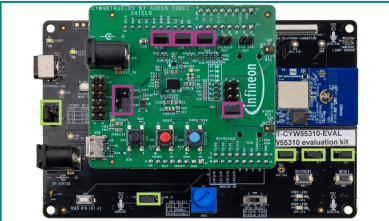
Kit contents

1. CYW55310 evaluation board
(CYW9CPM2BASE1 + CYW55310 M.2 card)
2. Audio shield board
3. USB-A to USB-C cable
4. Quick start guide (this document)



www.infineon.com/KIT-CYW55310-EVAL

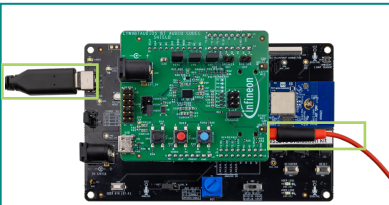




1 Default jumper settings

Baseboard jumpers	Position
J14	1-2
J16	Open
J17	Open
J10	Open
J20	3-5

Audio shield jumpers	Position
J14	1-2
J15	1-2
J16	1-2
J17	1-3
J19	1-2



2 USB cable connected to Kitprog3 USB connector (J6) and headset connected to the Audio shield headset jack (J10)

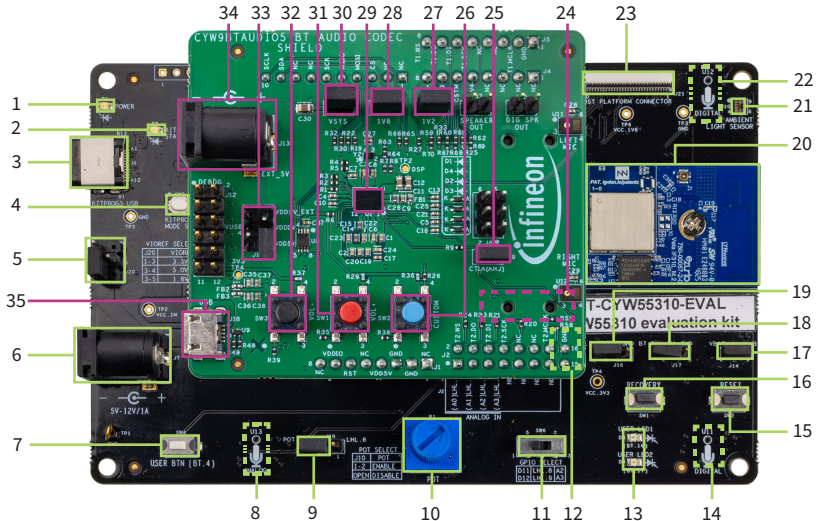
Before you start

- Ensure to have the following:
 - PC and a headset
 - UART terminal software such as Tera Term or Minicom
- Set the jumpers on the board as mentioned in the table.
- Connect the KitProg3 USB connector (J6) to your PC, using the provided USB cable and ensure that the power LED (D1) and Kitprog3 status LED (D2) glow.
- Connect the headset to the headset jack connector (J10) on the Audio shield board (Refer image-2).
- Press and hold the KitProg3 mode switch (SW3) for two seconds to enable dual UART mode and Kitprog3 status LED (D2) blinks. This enables the peripheral UART COM port for viewing the logs and the HCI UART COM port for programming.
- Press the RESET button (SW2) on baseboard to load the OOB code example on the kit.

Getting started with OOB code example

- Press and hold the CUSTOM (blue) button on the Audio shield for three seconds and then scan for Bluetooth® devices on the phone/PC that you want to connect to this kit.
- When the kit (HSPK) is discovered, pair your phone/PC with the kit.
- Use any audio application on your device to stream audio to the kit and listen with the plugged-in headphone.
- Use the VOL+ (red) and VOL- (black) buttons on the Audio shield for volume increase and decrease or long press to select next/previous audio track. Use the CUSTOM button to play/pause the track.

KIT-CYW55310-EVAL Evaluation board details



KIT-CYW55310-EVAL baseboard

- | | |
|---|---|
| <ul style="list-style-type: none"> 1 Power LED (D1) 2 KitProg3 status LED (D2) 3 KitProg3 USB-C connector (J6) 4 KitProg3 mode selection button (SW3) 5 VIREF voltage selection jumper (J20) 6 External power supply VIN connector (J7) 7 User button (SW4) 8 Analog mic (U13)* 9 Potentiometer connection jumper (J10) 10 Potentiometer (R1) 11 GPIO select switch (SW6) 12 LED enable/disable switch (SW5)* | <ul style="list-style-type: none"> 13 USER LEDs (D3, D4) 14 Digital mic 1 (U11)* 15 RESET button (SW2) 16 RECOVERY button (SW1) 17 VBAT current measurement jumper (J14) 18 Bluetooth* section disable jumper (J17) 19 WLAN section disable jumper (J16) 20 AIROC™ CYW55310 M.2 card 21 Ambient light sensor (U10) 22 Digital mic 2 (U12)* 23 External host platform interface connector (J21) |
|---|---|

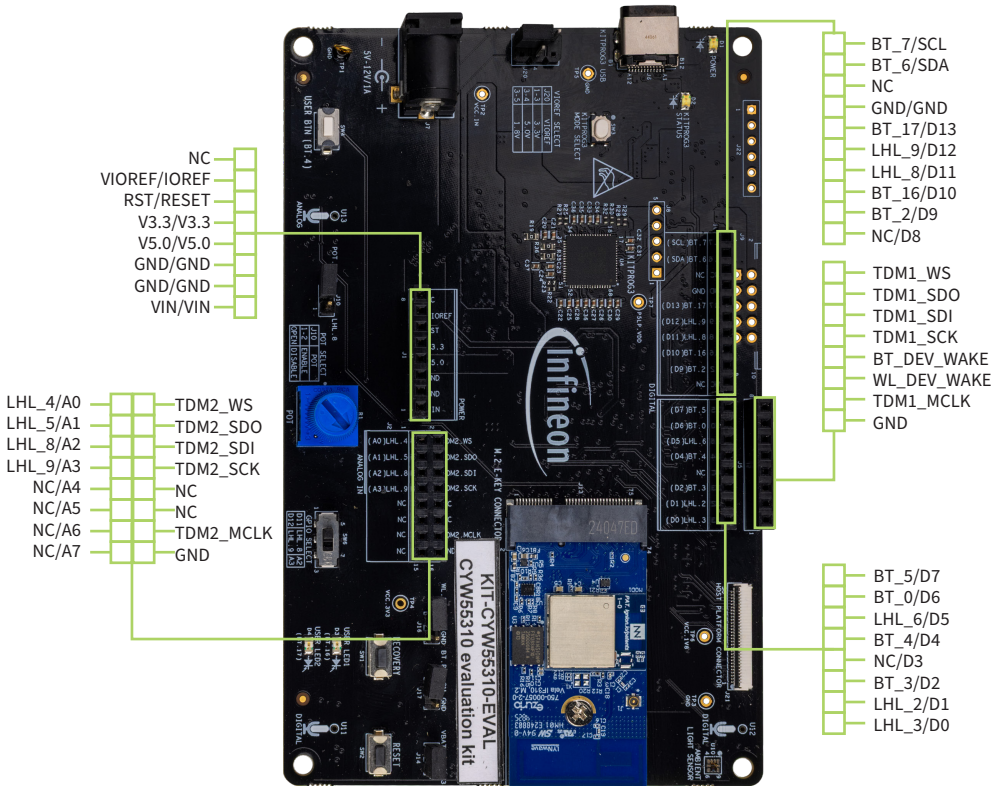
* Component is located at the bottom side of the board

Audio shield board (CYW9BTAUDIOIS)

- | | |
|---|--|
| <ul style="list-style-type: none"> 24 CTIA headset connector (J10)* 25 CTIA headset jumper (J19) 26 CUSTOM button (SW2) 27 Codec 1.2 V jumper (J15) 28 Codec 1.8 V jumper (J16) 29 Audio codec CS47L35 (U1) | <ul style="list-style-type: none"> 30 VSYS enable jumper (J14) 31 Volume increase button (SW1) 32 Volume decrease button (SW3) 33 VDDIN selection jumper (J17) 34 External 5 V DC Jack (J13) 35 Micro-USB connector for USB-I2C bridge (J18) |
|---|--|

* Component is located at the bottom side of the board

KIT-CYW55310-EVAL Evaluation board pinout details



See the kit guide available at www.infineon.com/KIT-CYW55310-EVAL for more details.

All referenced product or service names and trademarks are the property of their respective owners.
The Bluetooth® word mark and logos are registered trademarks owned by Bluetooth SIG, Inc., and any use of such marks by Infineon is under license.