

BGT24ATR22 YPA shield

XENSIV™ 24 GHz radar system platform

Board version V1.4

About this document

Scope and purpose

This user guide describes the function, circuitry, and performance of the XENSIV™ BGT24ATR22 24 GHz radar Yagi patch antenna (YPA) shield. The shield is the demo platform that accompanies Infineon's XENSIV™ BGT24ATR22 24 GHz radar sensor with an external pair of patch antennas, and one pair of Yagi antennas. The shield offers a digital interface for configuration and transfer of the acquired radar data to a microcontroller board such as Radar Baseboard MCU7.

Intended audience

This document is intended for design engineers, technicians, and developers of electronic systems, working with Infineon's XENSIV™ BGT24ATR22 24 GHz low-power radar sensor.

Reference Board/Kit

Product(s) embedded on a PCB with a focus on specific applications and defined use cases that may include software. PCB and auxiliary circuits are optimized for the requirements of the target application.

Note: Boards do not necessarily meet safety, EMI, quality standards (for example UL, CE) requirements.

Important notice

Important notice

“Evaluation Boards and Reference Boards” shall mean products embedded on a printed circuit board (PCB) for demonstration and/or evaluation purposes, which include, without limitation, demonstration, reference and evaluation boards, kits and design (collectively referred to as “Reference Board”).

Environmental conditions have been considered in the design of the Evaluation Boards and Reference Boards provided by Infineon Technologies. The design of the Evaluation Boards and Reference Boards has been tested by Infineon Technologies only as described in this document. The design is not qualified in terms of safety requirements, manufacturing and operation over the entire operating temperature range or lifetime.

The Evaluation Boards and Reference Boards provided by Infineon Technologies are subject to functional testing only under typical load conditions. Evaluation Boards and Reference Boards are not subject to the same procedures as regular products regarding returned material analysis (RMA), process change notification (PCN) and product discontinuation (PD).

Evaluation Boards and Reference Boards are not commercialized products, and are solely intended for evaluation and testing purposes. In particular, they shall not be used for reliability testing or production. The Evaluation Boards and Reference Boards may therefore not comply with CE or similar standards (including but not limited to the EMC Directive 2004/EC/108 and the EMC Act) and may not fulfill other requirements of the country in which they are operated by the customer. The customer shall ensure that all Evaluation Boards and Reference Boards will be handled in a way which is compliant with the relevant requirements and standards of the country in which they are operated.

The Evaluation Boards and Reference Boards as well as the information provided in this document are addressed only to qualified and skilled technical staff, for laboratory usage, and shall be used and managed according to the terms and conditions set forth in this document and in other related documentation supplied with the respective Evaluation Board or Reference Board.

It is the responsibility of the customer’s technical departments to evaluate the suitability of the Evaluation Boards and Reference Boards for the intended application, and to evaluate the completeness and correctness of the information provided in this document with respect to such application.

The customer is obliged to ensure that the use of the Evaluation Boards and Reference Boards does not cause any harm to persons or third party property.

The Evaluation Boards and Reference Boards and any information in this document is provided "as is" and Infineon Technologies disclaims any warranties, express or implied, including but not limited to warranties of non-infringement of third party rights and implied warranties of fitness for any purpose, or for merchantability.

Infineon Technologies shall not be responsible for any damages resulting from the use of the Evaluation Boards and Reference Boards and/or from any information provided in this document. The customer is obliged to defend, indemnify and hold Infineon Technologies harmless from and against any claims or damages arising out of or resulting from any use thereof.

Infineon Technologies reserves the right to modify this document and/or any information provided herein at any time without further notice.

Safety precautions

Safety precautions

Note: Please note the following warnings regarding the hazards associated with development systems

Table 1 **Safety precautions**


	Caution: <i>The reference board contains parts and assemblies sensitive to electrostatic discharge (ESD). Electrostatic control precautions are required when installing, testing, servicing or repairing the assembly. Component damage may result if ESD control procedures are not followed. If you are not familiar with electrostatic control procedures, refer to the applicable ESD protection handbooks and guidelines.</i>
---	--

Table of contents

Table of contents

About this document.....	1
Important notice	2
Safety precautions.....	3
Table of contents.....	4
1 The board at a glance.....	5
1.1 Radar system platform.....	5
1.2 Key features.....	5
2 Hardware description	7
2.1 Overview	7
2.2 Schematics	8
2.3 Sensor power supply	8
2.4 Oscillator.....	9
2.5 Connectors	10
2.6 EEPROM and I ² C pull-ups	11
2.7 Trigger interface and compatibility features	11
2.8 External filter capacitors.....	11
2.9 Layer stackup	12
2.10 Metal layers.....	12
3 Layout overview	14
3.1 Top side with MMIC and antennas.....	14
3.1.1 MMIC footprint.....	15
3.1.2 Patch antennas	16
3.1.3 Yagi antennas	16
3.2 Bottom side with supporting components	17
References.....	18
Revision history.....	19
Disclaimer.....	20

The board at a glance

1 The board at a glance

1.1 Radar system platform

The 24 GHz radar system platform described in this user guide note demonstrates the operational parameters of Infineon's BGT24ATR22 24 GHz radar MMIC. The platform consists of two boards: the RF shield containing the MMIC and antennas, and Radar Baseboard MCU7.

This user guide note focuses on the BGT24ATR22 YPA shield. For detailed documentation on the radar baseboard, see UG091519 - Radar Baseboard MCU7 user guide [1].

Figure 1 shows the "DEMO BGT24ATR22 YPA" board, composed of the Radar Baseboard MCU7 with the plugged BGT24ATR22 YPA shield, forming together the "DEMO BGT24ATR22 YPA".

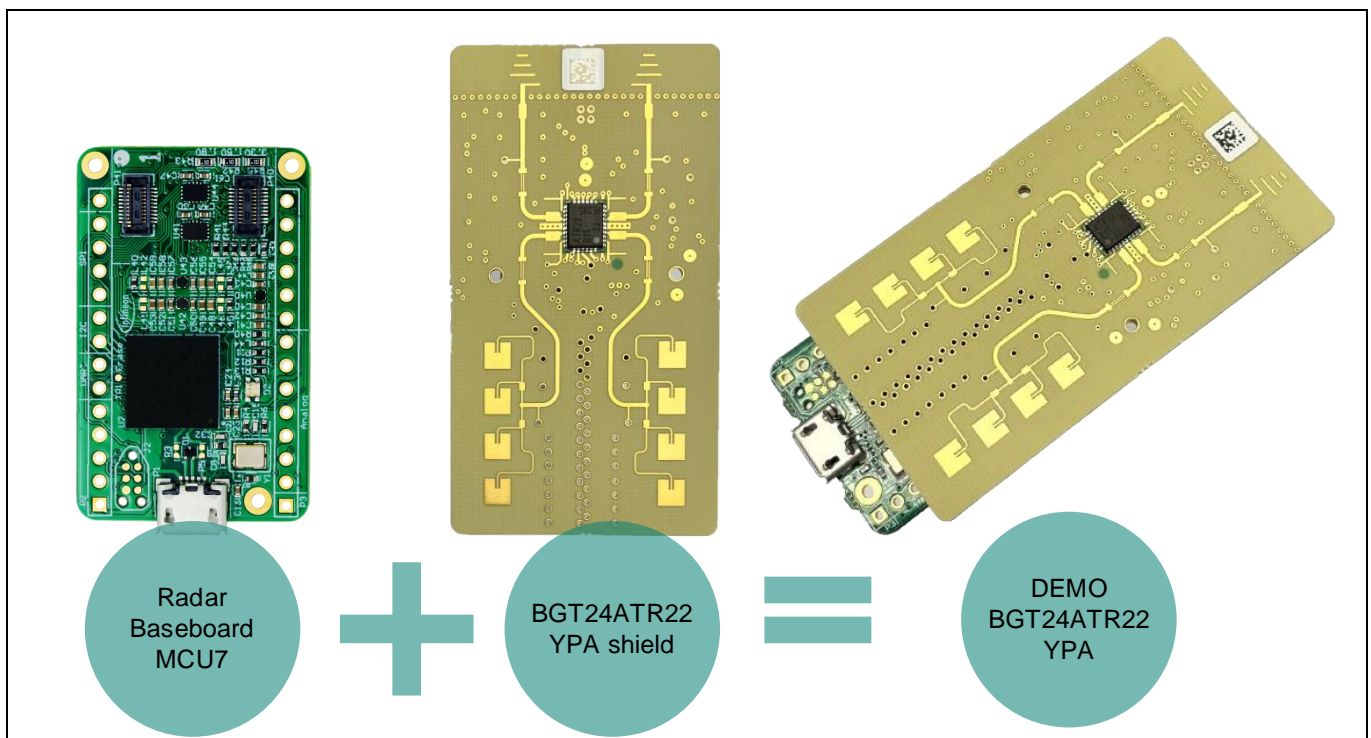


Figure 1 **DEMO BGT24ATR22 YPA**

1.2 Key features

The BGT24ATR22 shield is designed to showcase the capabilities of BGT24ATR22 in hands-free trunk opening applications, including motion detection and kick sensing, while requiring ultra-low power consumption.

The following features make BGT24ATR22 a perfect fit for these applications:

- 24 GHz radar, enabling good penetration of housing and little external/environmental attenuation
- Integrated finite state machine for ultra-low power operation
- On-chip radar data preprocessing including the frequency-shift-keying (FSK) feature
- Single-ended RF terminals with 2 Tx and Rx channels for custom antenna design
- Fully integrated low-phase-noise VCO
- Automatic frequency control
- Homodyne quadrature receiver

The board at a glance

- Integrated analog baseband amplifiers
- Automatic DC offset compensation
- Integrated 12-bit ADC
- Fully ESD-protected device
- VQFN32-9 plastic package

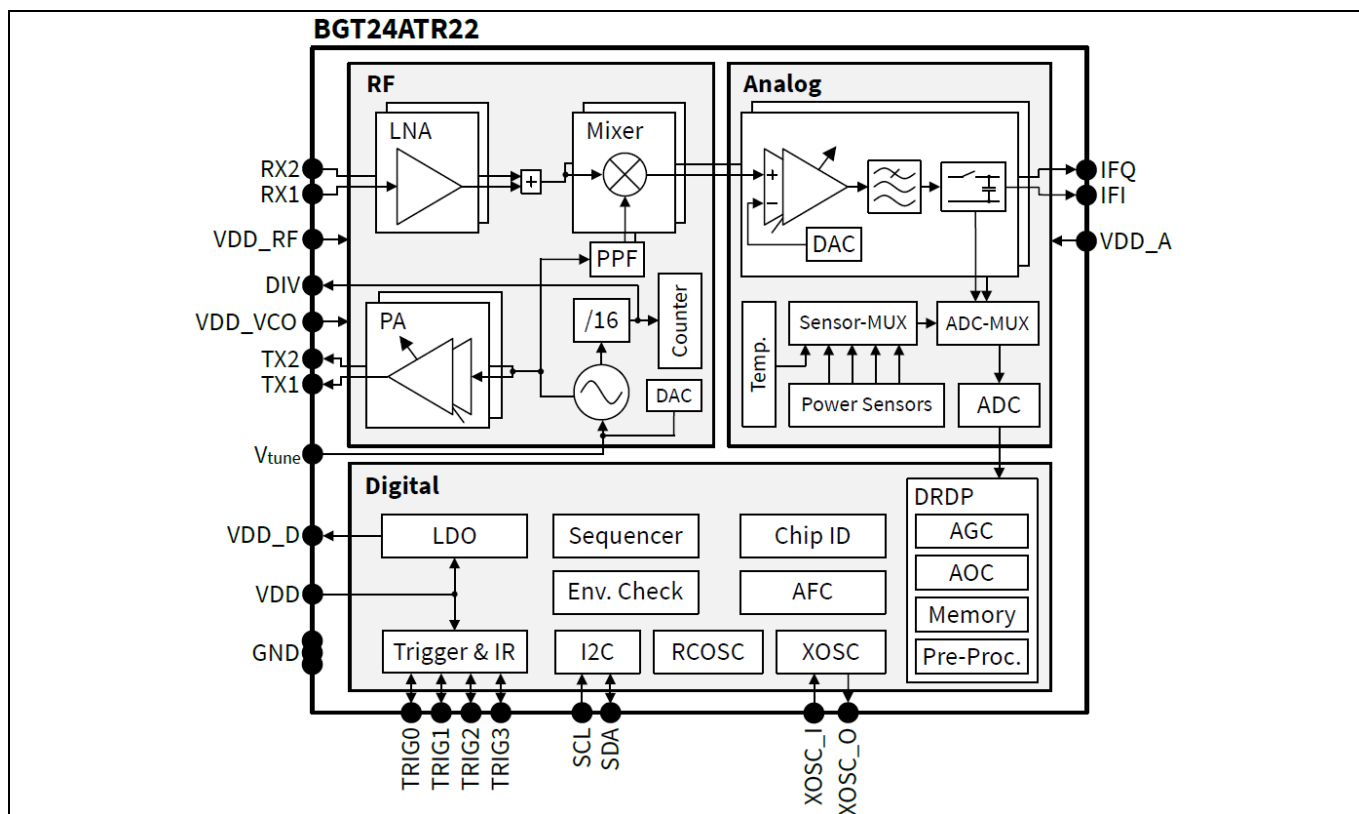


Figure 2 Block diagram of BGT24ATR22

2 Hardware description

2.1 Overview

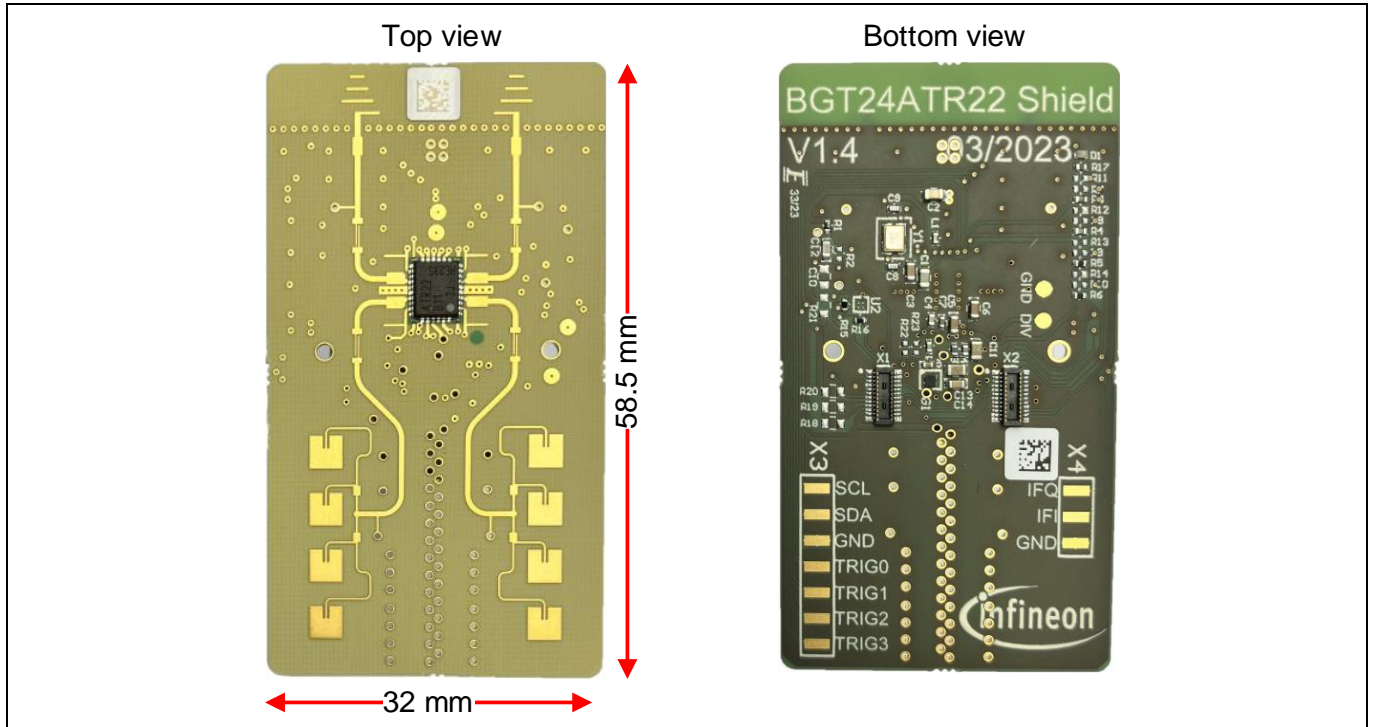


Figure 3 BGT24ATR22 YPA shield (top and bottom views)

The BGT24ATR22 YPA shield has dimensions of 32 mm x 58.5 mm on a 4-layer board (see Section 2.9 for details of the layer stack). The MMIC is mounted on top of the board together with the matching structures for Tx and Rx ports and the antennas. For more details on the recommended footprint, antennas, and matching structures, see Section 3.1. The bottom side has the required external components, connectors to Radar Baseboard MCU7, and pin headers for debugging. For details, see Section 3.2.

BGT24ATR22 YPA shield

XENSIV™ 24 GHz radar system platform

Hardware description

2.2 Schematics

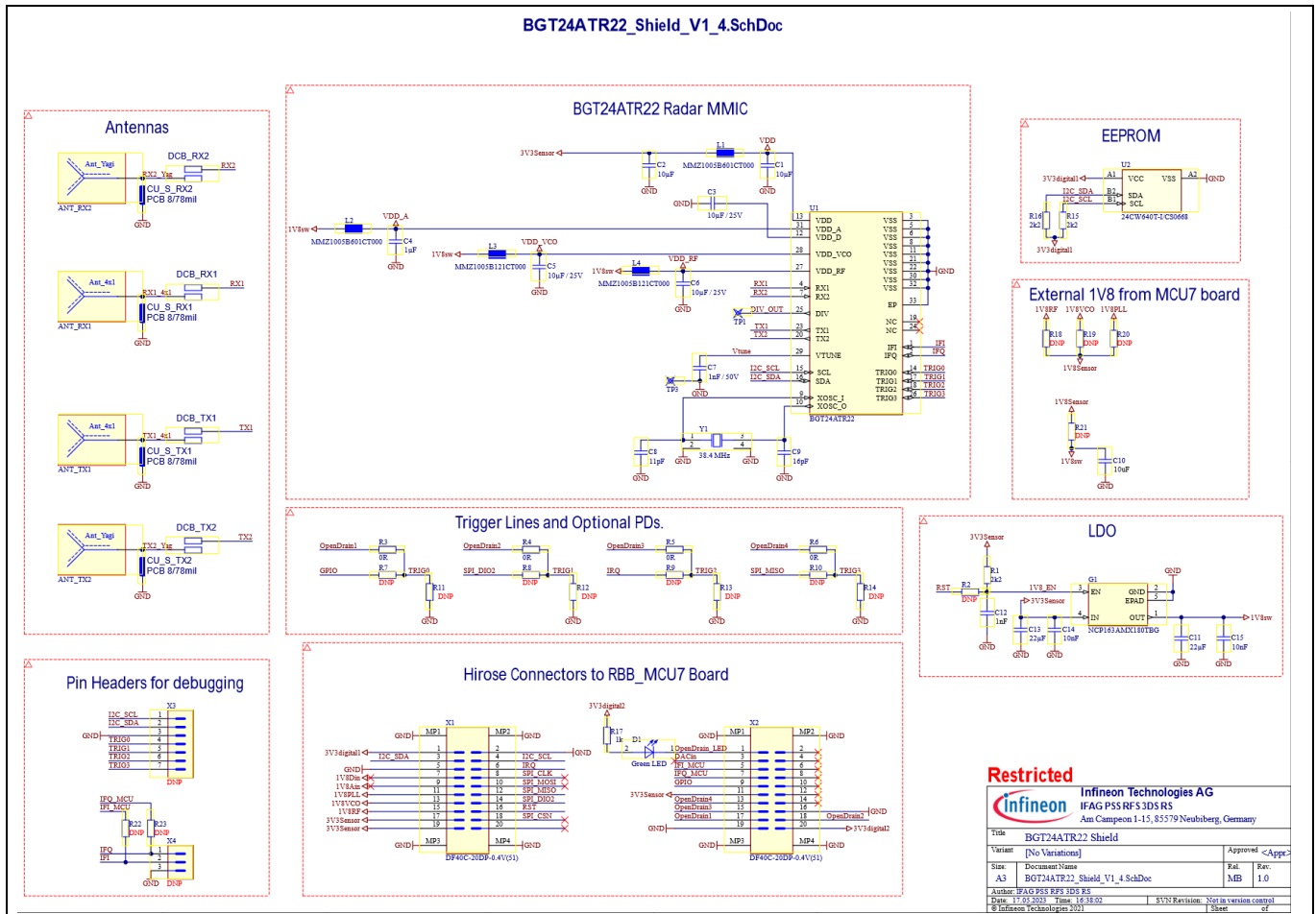


Figure 4 Overview of the schematic of the shield

2.3 Sensor power supply

BGT24ATR22 supports 1.8 – 3.3 V as VDD and GPIO voltages, dependent on whether 1.8 V or 3.3 V are supplied. A chip-internal LDO generates 1.5 V as VDD_D as the digital supply. Because the Radar Baseboard MCU7 board uses a 3.3 V MCU, the VDD of BGT24ATR22 is supplied from an onboard LDO from Radar Baseboard MCU7 with 3.3 V. Because radar sensors are very sensitive to supply voltage fluctuations or crosstalk between different supply domains, a low-noise power supply with properly decoupled supply rails is recommended. Therefore, all analog supplies (i.e., VDD_RF, VDD_VCO, and VDD_A) are fed from one single external LDO placed on the RF shield that generates 1.8 V.

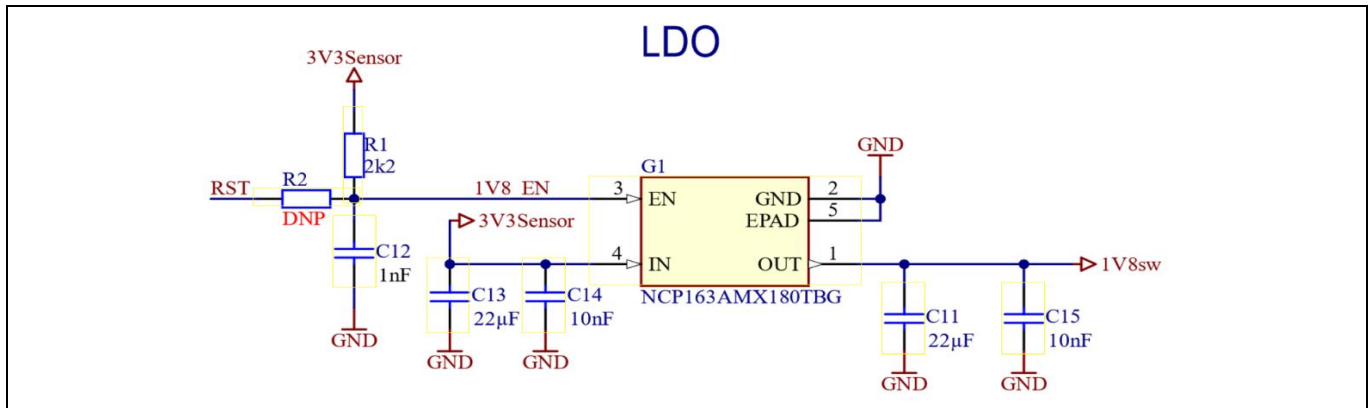


Figure 5 External LDO generating 1.8 V output as VDD (VDD_RF, VDD_VCO, VDD_A) from 3.3 V input

BGT24ATR22 is intended to be used in a heavy pulsed operational mode, showing high load transients for the supply current. To handle these current transients on the supply line, especially the LDO output, they have to be buffered by large capacitors. The LDO itself shows a load transient dip in supply voltage and cannot serve the current as fast as required. To reduce this effect, the required supply pulse charge is provided by the large (ceramic) buffer capacitors (MLCC).

The better the load transient characteristic of the used LDO is, the less critical the situation will be. Therefore, it is important for highly duty-cycled short-range radars to select a suitable LDO.

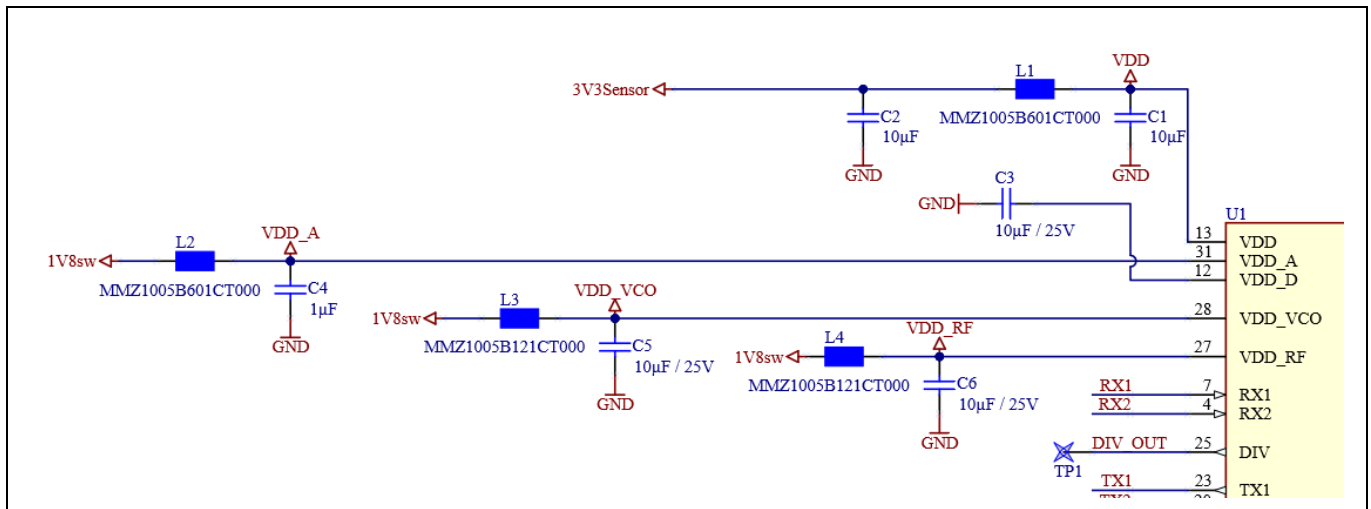


Figure 6 Schematic section of DC supply

2.4 Oscillator

The 38.4 MHz crystal serves as a high-precision time reference to calibrate the transmitted VCO frequency. The internal oscillator is based on a Pierce oscillator architecture, which usually requires symmetrical load capacitors. The values of the load capacitor are different because at XOSC_I, there are additional 5 pF on the chip. Instead of 11 pF and 16 pF, standard values of C8 = 12 pF and C9 = 15 pF can be chosen.

BGT24ATR22 YPA shield

XENSIV™ 24 GHz radar system platform

Hardware description

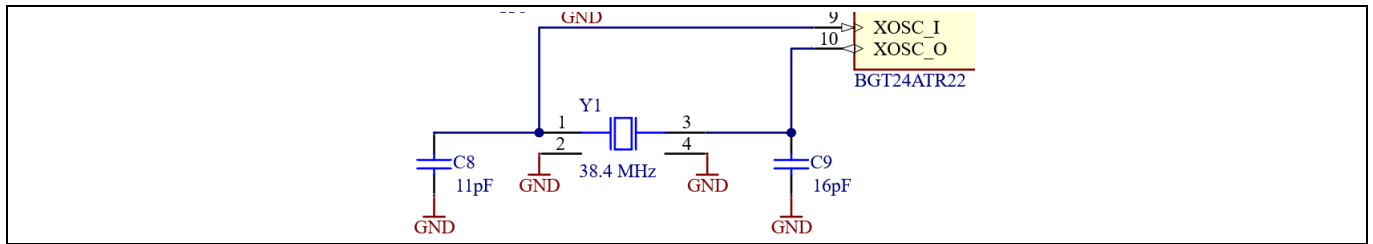


Figure 7 Crystal and load capacitors

2.5 Connectors

On the BGT24ATR22 YPA shield, there are micro connectors for connecting the RF shield to Radar Baseboard MCU7 and pin headers for debugging.

Figure 8 shows the two Hirose connectors that connect the RF shield to Radar Baseboard MCU7. The naming of the pins corresponds to the naming as given in UG091519: Radar Baseboard MCU7 user guide [1]. The connections include the following:

- I²C communication (I2C_SDA, I2C_SCL)
- Connections of the trigger outputs to GPIO inputs of the MCU (OpenDrain1, 2, 3)
- 3.3 V voltage supply provided by an LDO onboard the Radar Baseboard MCU7.

In addition, there is the optional feature to sample the IFI/IFQ signal with an ADC integrated on the MCU, as described below.

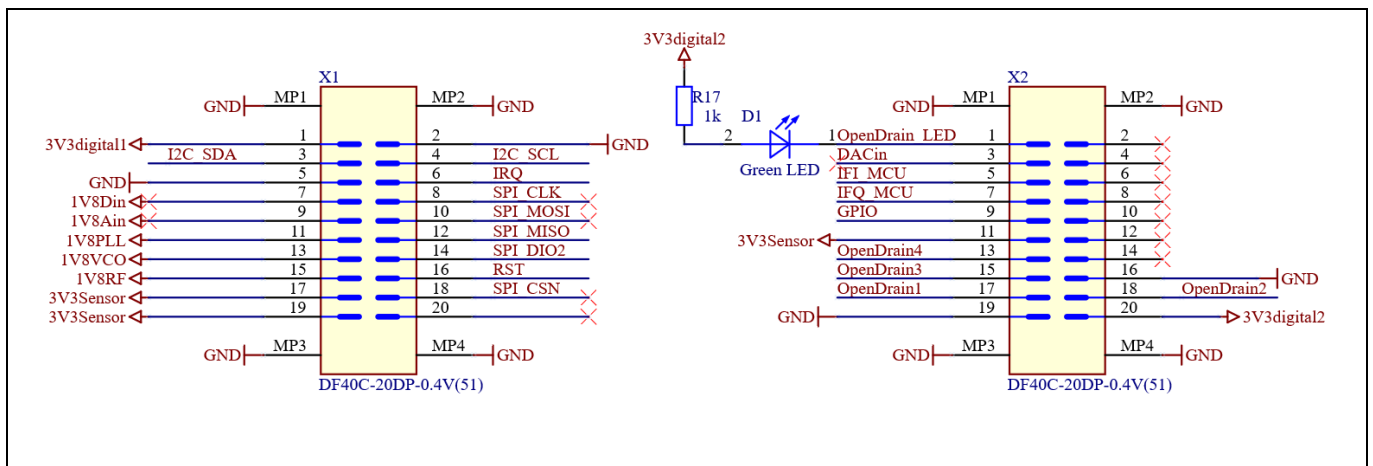


Figure 8 Hirose connectors to Radar Baseboard MCU7

The pin headers for debugging provide a simple way to monitor the digital interfaces between the RF shield and Radar Baseboard MCU7 and analog I/Q signals. The I/Q signals can be rerouted to the MCU's ADC inputs by placing zero-ohm resistors at R22 and R23.

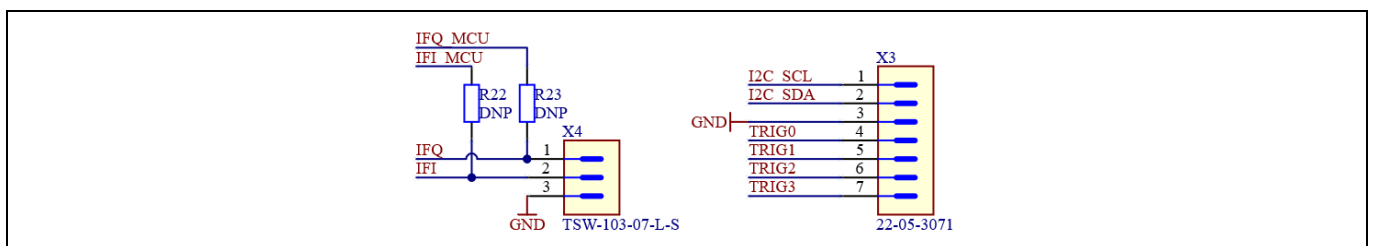


Figure 9 Pin headers for debugging

BGT24ATR22 YPA shield

XENSIV™ 24 GHz radar system platform

Hardware description

2.6 EEPROM and I²C pull-ups

Optionally, the BGT24ATR22 RF shield contains an EEPROM memory to store data such as the board identifier, with connections as shown in [Figure 10](#). Note that even if the EEPROM is omitted, pull-up resistors must be placed on the I²C lines.

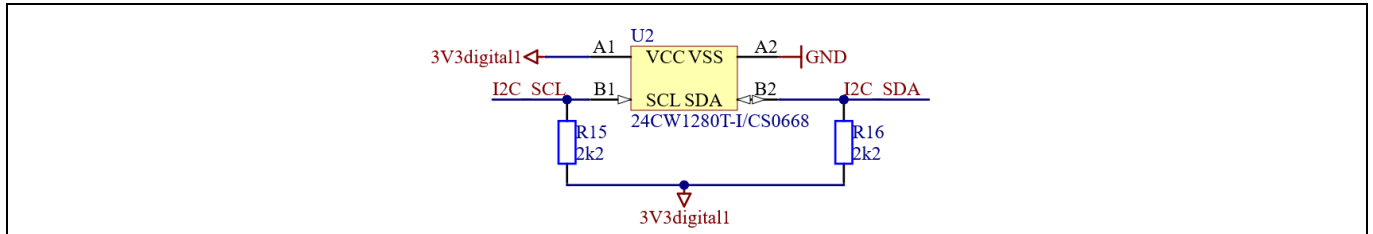


Figure 10 Schematic of the EEPROM

2.7 Trigger interface and compatibility features

[Figure 11](#) shows the connection of the trigger pins to GPIOs of Radar Baseboard MCU7. Pull-down resistors for the four trigger pins and a jumper resistor for use of the shield with future baseboards are optionally available.

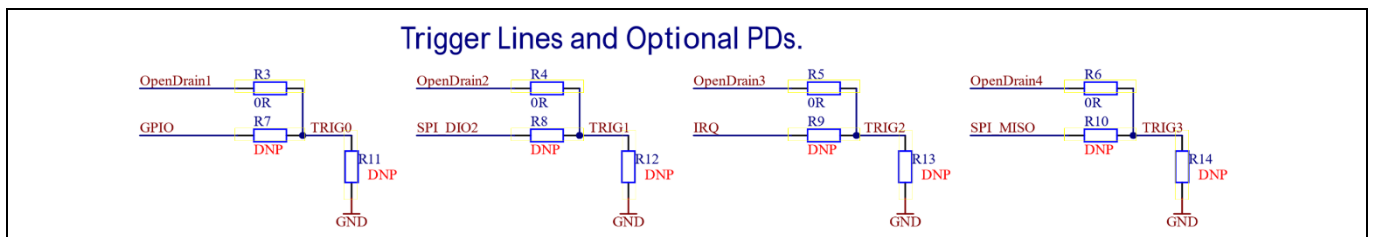


Figure 11 Trigger lines

The resistors shown in [Figure 12](#) are for compatibility with future baseboards.

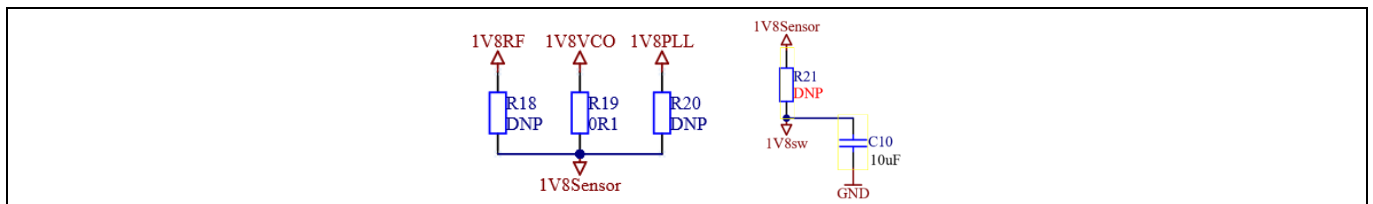


Figure 12 Resistors connecting 1.8 V domain

2.8 External filter capacitors

C3 and C7 shown in [Figure 13](#) are filter capacitors. C3 reduces the noise generated by the internal 1.5 V LDO, while C7 stores the voltage generated by the DAC which controls the tuning voltage.

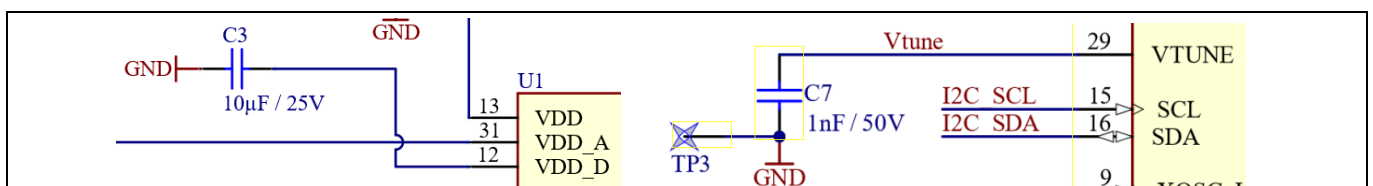


Figure 13 External filter capacitors at VDD_D and VTUNE

Hardware description

2.9 Layer stackup

#	Name	Material	Type	Weight	Thickness
	Top Overlay		Overlay		
	Top Solder	Solder Resist	Solder Mask		0.02mm
1	L1_Top		Signal	1oz	0.042mm
	Dielectric1	Rogers 4350B	Core		0.254mm
2	L2_GND		Signal	1/2oz	0.018mm
	Dielectric2	FR-4	Prepreg		0.508mm
3	L3_Sig		Signal	1/2oz	0.018mm
	Dielectric3	FR-4	Core		0.254mm
4	L4_Bot		Signal	1oz	0.042mm
	Bottom Solder	Solder Resist	Solder Mask		0.02mm
	Bottom Overlay		Overlay		

Figure 14 Layer stackup

Surface finish is Electroless Nickel Immersion Gold (ENIG).

Note: The RF shield design uses only through-hole vias. No blind vias are required.

2.10 Metal layers

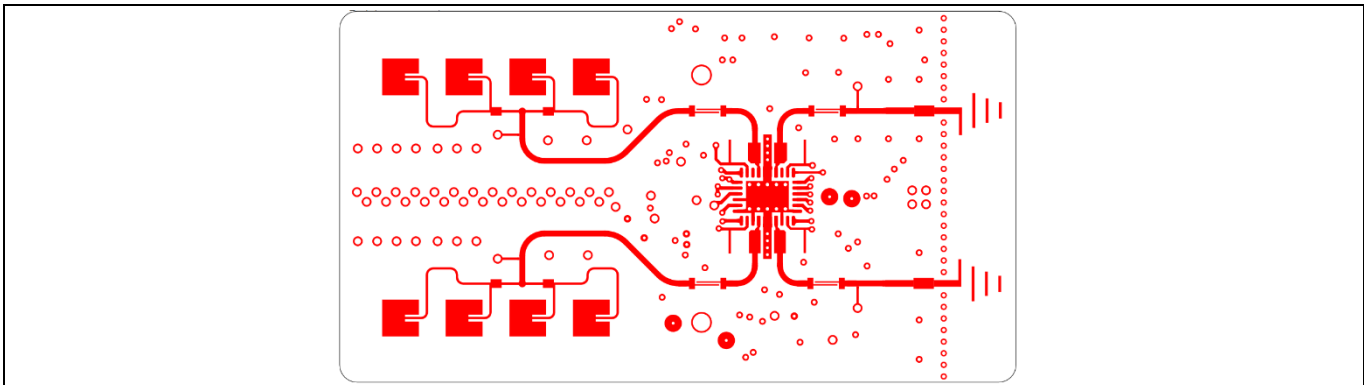


Figure 15 Top layer – Antennas and MMIC

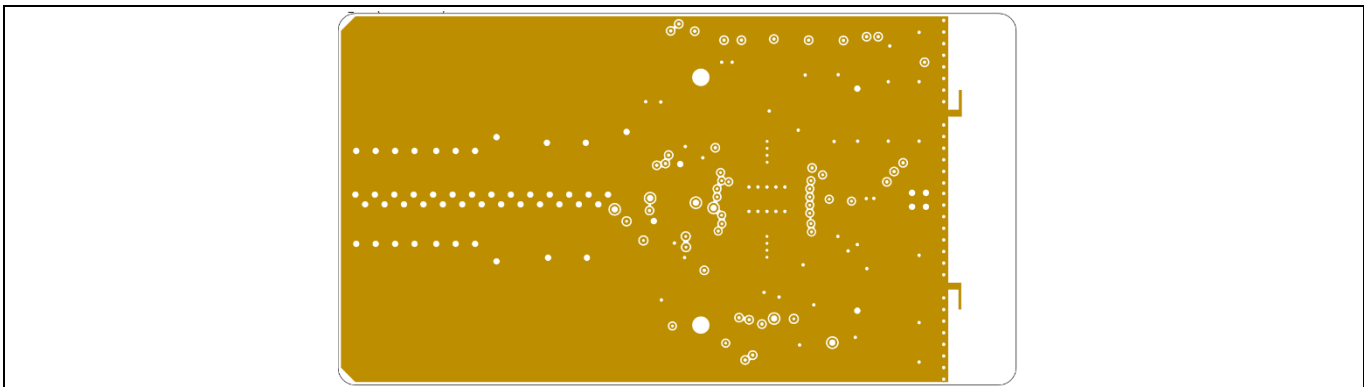


Figure 16 Layer 2 – GND plane

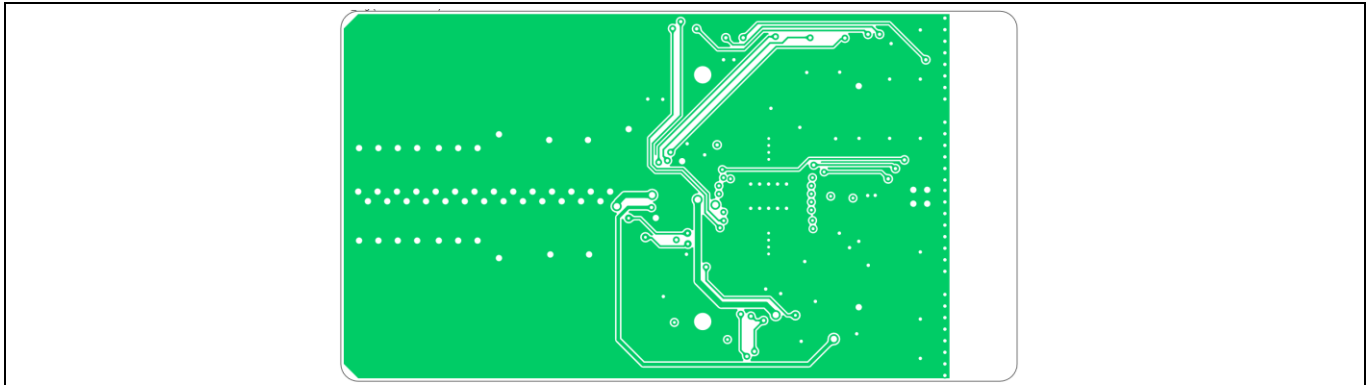


Figure 17 **Layer 3 – Signal routing**

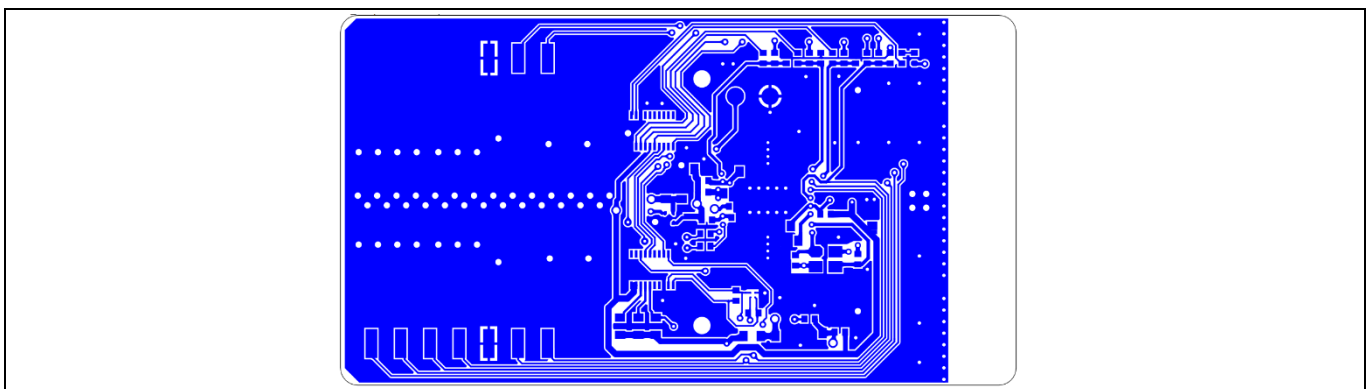


Figure 18 **Bottom layer – Signal routing and supporting components**

3 Layout overview

3.1 Top side with MMIC and antennas

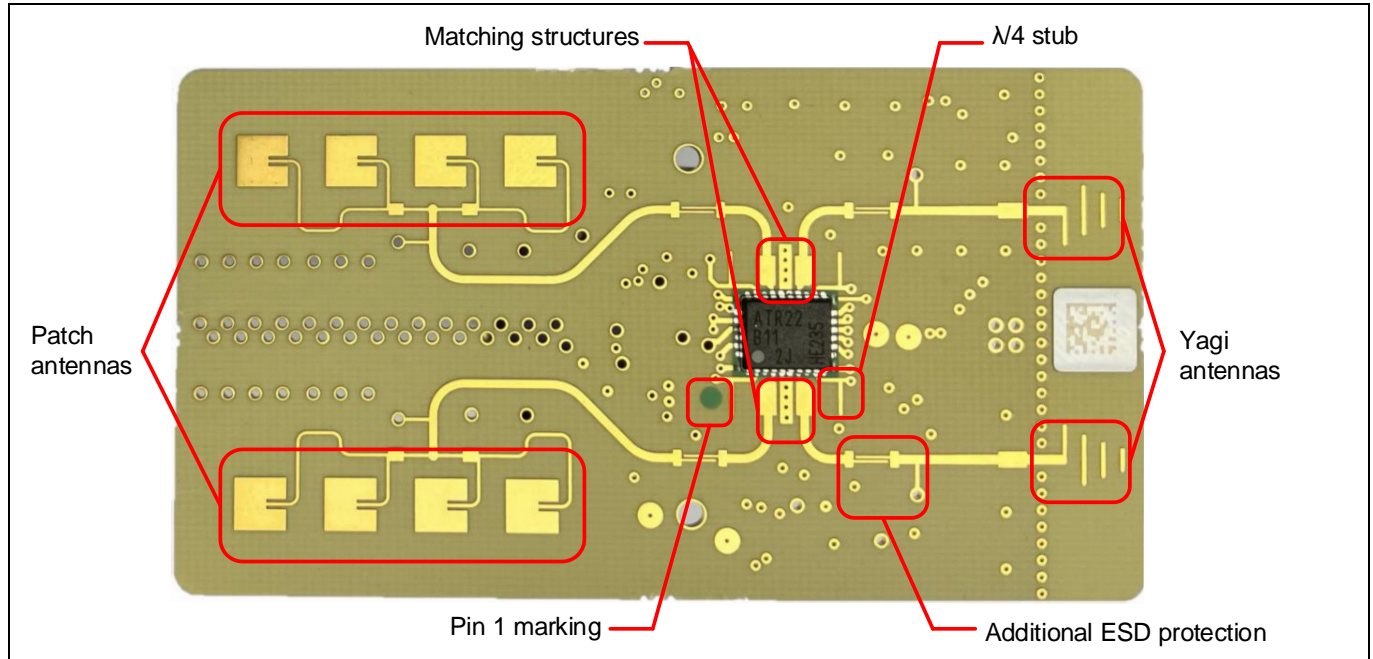


Figure 19 Layout elements on top side

The top side features all the RF-related structures and the MMIC.

Layout overview

3.1.1 MMIC footprint

It is recommended to use the exact footprint as shown in [Figure 20](#) because this structure was optimized for use with BGT24ATR22 and recommended PCB material.

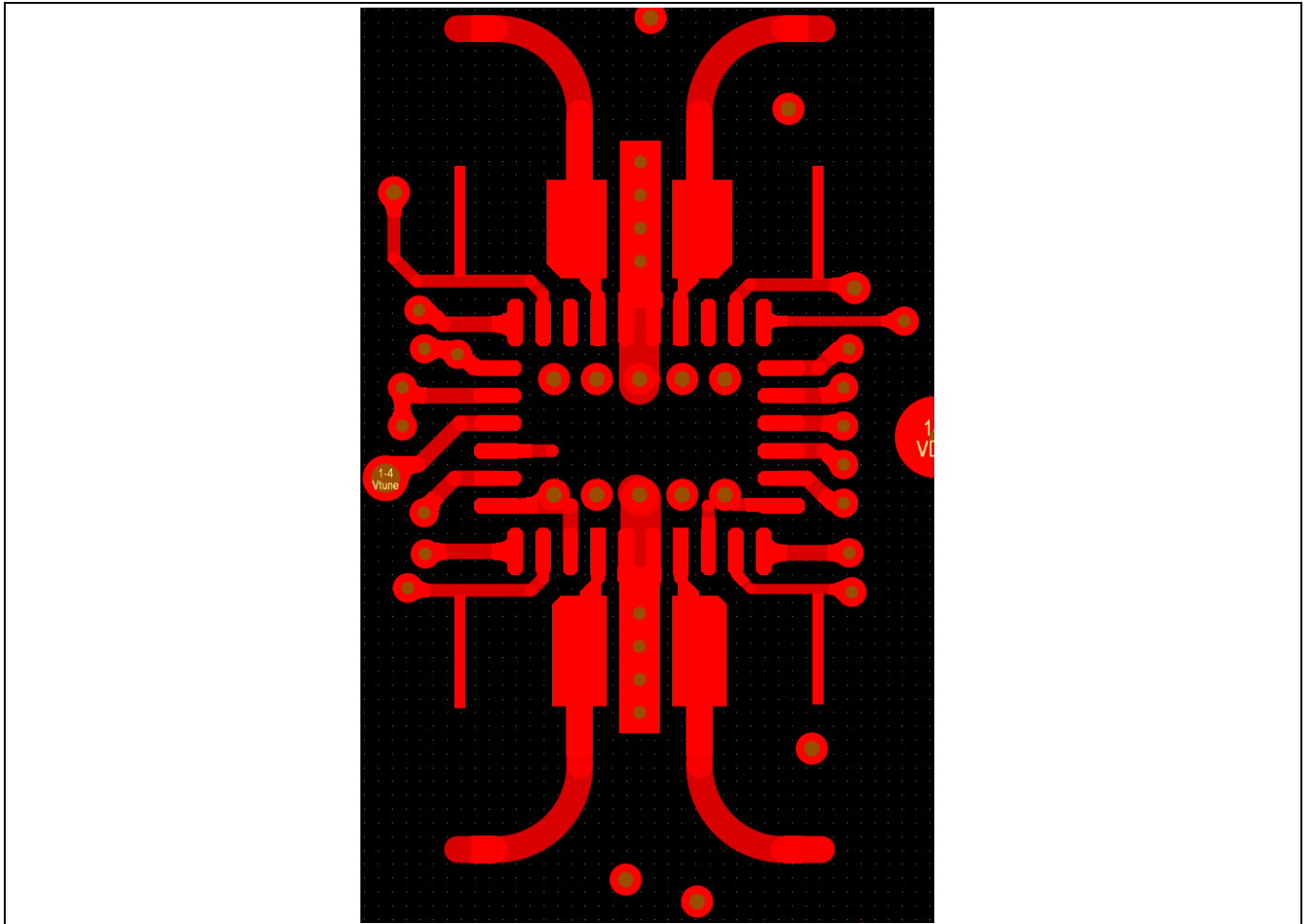


Figure 20 Recommended PCB footprint

Layout overview

3.1.2 Patch antennas

The patch antennas are intended to be used during kick detection. Their radiation pattern is perpendicular to the RF shield's surface.

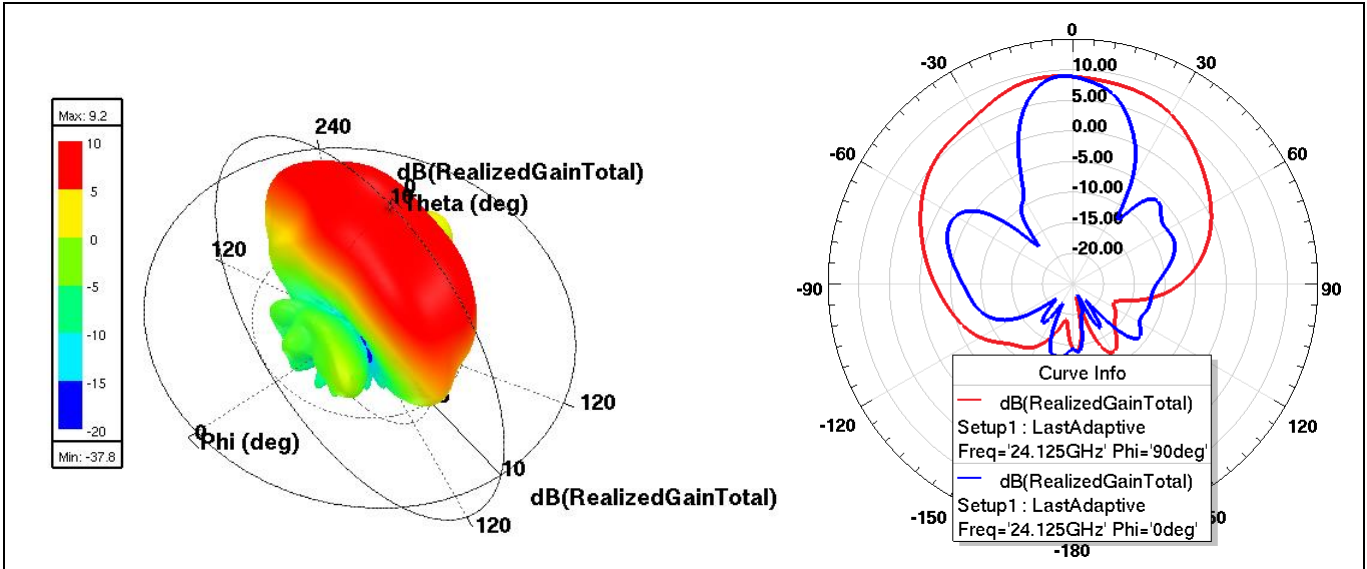


Figure 21 Simulated radiation pattern of patch antennas

3.1.3 Yagi antennas

The Yagi antennas are intended for use during surveillance mode. They radiate in parallel to the RF shield's surface to the right if the board is oriented as shown in [Figure 19](#).

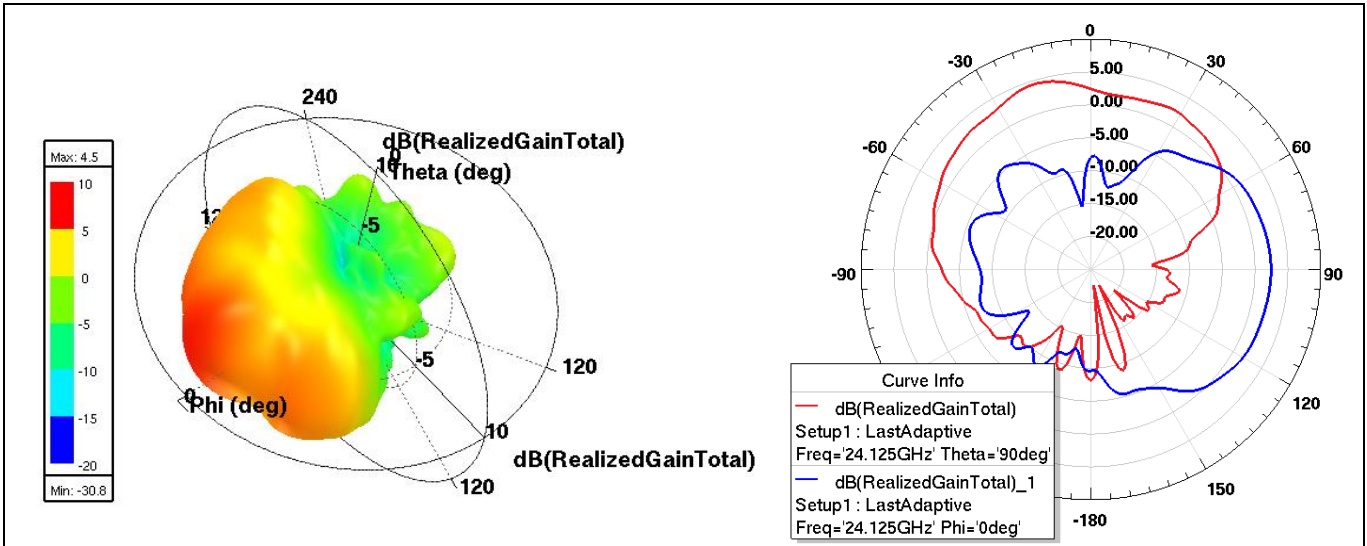


Figure 22 Simulated radiation pattern of Yagi antennas

3.2 Bottom side with supporting components

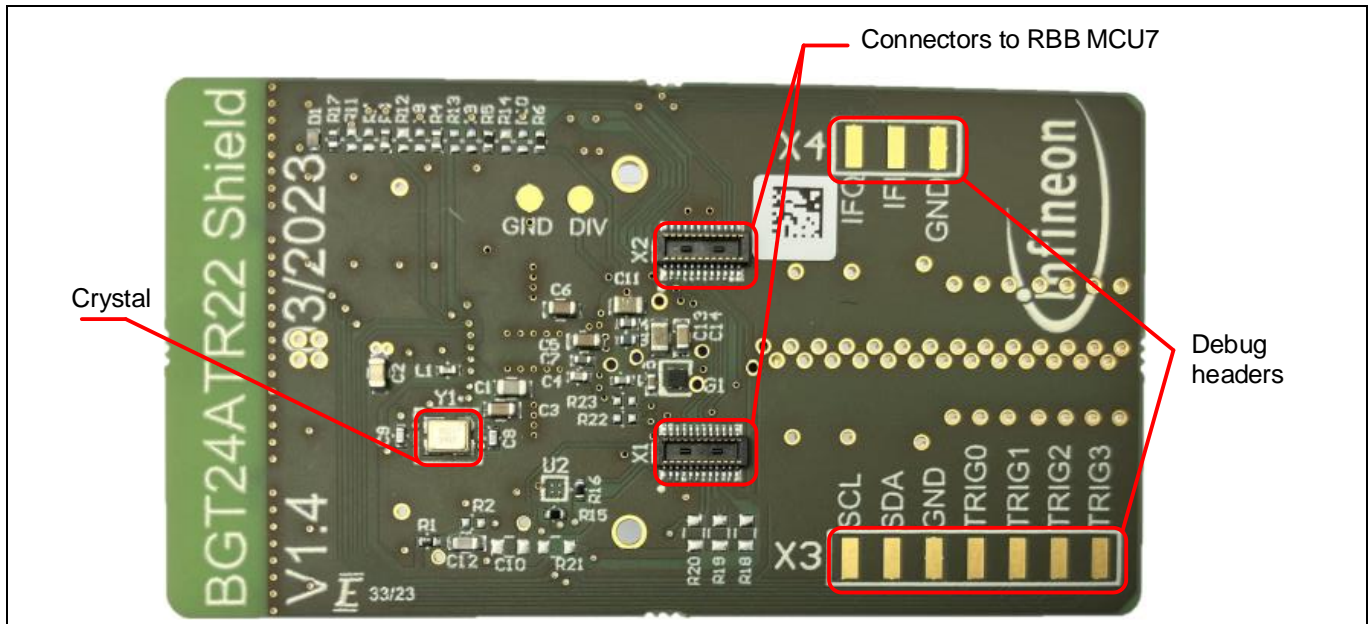


Figure 23 Components on bottom side

All external components except the MMIC are placed on the bottom side of the RF shield.

The main connector interface of the BGT24ATR22 YPA shield contains two Hirose DF40C-20DP-0.4V connectors. On the microcontroller side, Radar Baseboard MCU7 contains the corresponding DF40HC(3.5)-20DS-0.4V(51) connectors on its bottom side. The RF shield and Radar Baseboard MCU7 must be properly aligned as shown in [Figure 1](#).

There is a risk of the Hirose connectors wearing out when regularly plugged into and unplugged from the shield. To prevent this, it is recommended not to lift the board out of the connector on the short side. Instead, simply pull on the long side of the board, thereby tilting the short side. This will significantly increase the operational lifetime of the connectors.

References

References

- [1] Infineon Technologies AG: *UG091519: Radar Baseboard MCU7 user guide*; [Available online](#)
- [2] Infineon Technologies AG: *BGT24ATR22 MMIC datasheet*; [Available online](#)

Revision history

Revision history

Document revision	Date	Description of changes
1.00	2024-06-13	Initial release
1.10	2024-10-17	Changed document ID

Trademarks

All referenced product or service names and trademarks are the property of their respective owners.

Edition 2024-10-17

Published by

Infineon Technologies AG

81726 Munich, Germany

**© 2024 Infineon Technologies AG.
All Rights Reserved.**

**Do you have a question about this
document?**

Email: erratum@infineon.com

Document reference

UG113539

Warnings

Due to technical requirements products may contain dangerous substances. For information on the types in question please contact your nearest Infineon Technologies office.

Except as otherwise explicitly approved by Infineon Technologies in a written document signed by authorized representatives of Infineon Technologies, Infineon Technologies' products may not be used in any applications where a failure of the product or any consequences of the use thereof can reasonably be expected to result in personal injury.