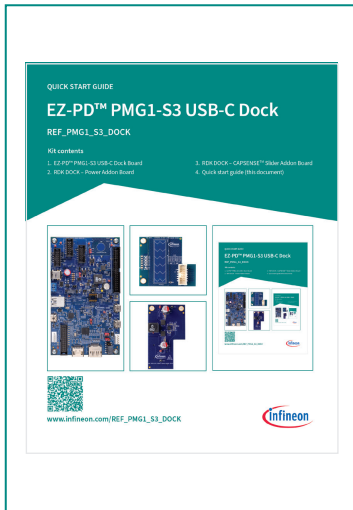
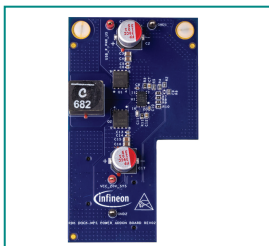
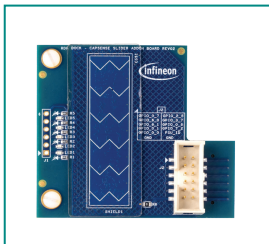
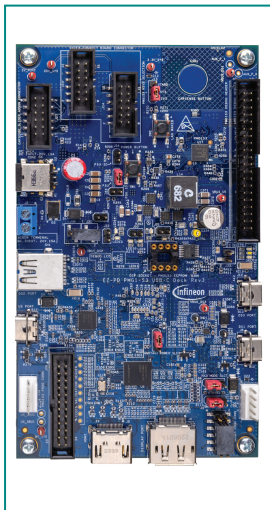


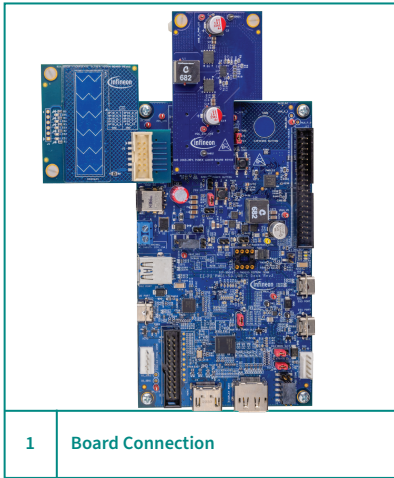
EZ-PD™ PMG1-S3 USB-C Dock

REF_PMG1_S3_DOCK

Kit contents

1. EZ-PD™ PMG1-S3 USB-C Dock Board
2. RDK DOCK – Power Addon Board
3. RDK DOCK – CAPSENSE™ Slider Addon Board
4. Quick start guide (this document)





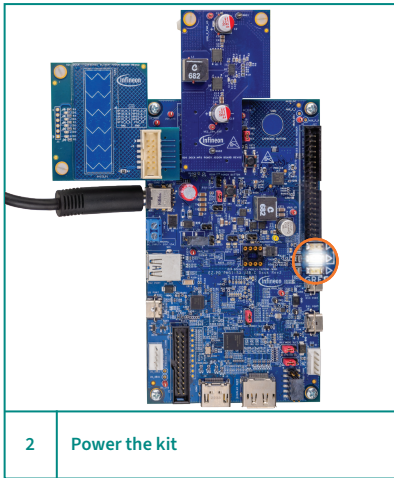
Before you start

1. Ensure that you have a laptop with USB-PD Type-C port.
2. Ensure that the jumpers are set to the following:

Jumper	Position
J15	1-2
J32	1-2
J3	1-2
J4	2-3
J25	1-2

Step 1: Dock board, power board and CAPSENSE™ board connected

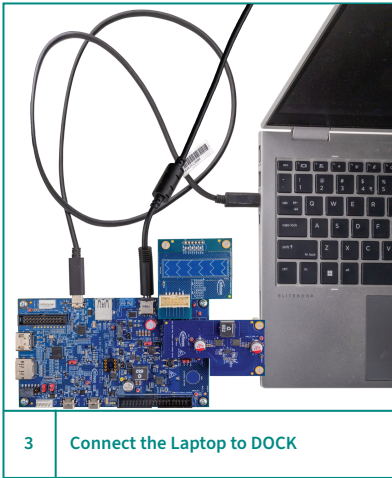
Connect the EZ-PD™ PMG1-S3 USB-C Dock Board, power Addon Board and CAPSENSE™ Slider Addon Board as shown in the image.



Step 2: Dock powered on using the barrel jack (CON2) connector And white LED glows

Power the kit with a 19.5V adapter with a minimum wattage of 120W. White LED must glow on the board.

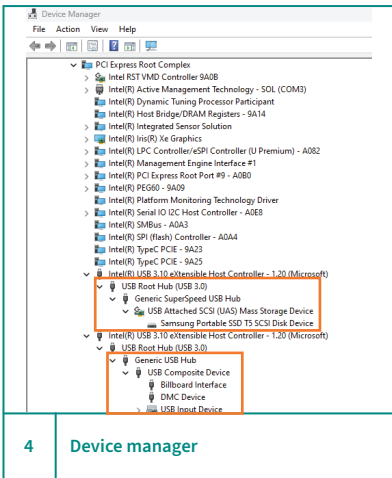
Step 3: Dock connected to laptop using a USB-C cable
Connect the laptop to the DOCK UFP Port (J7).



3 Connect the Laptop to DOCK

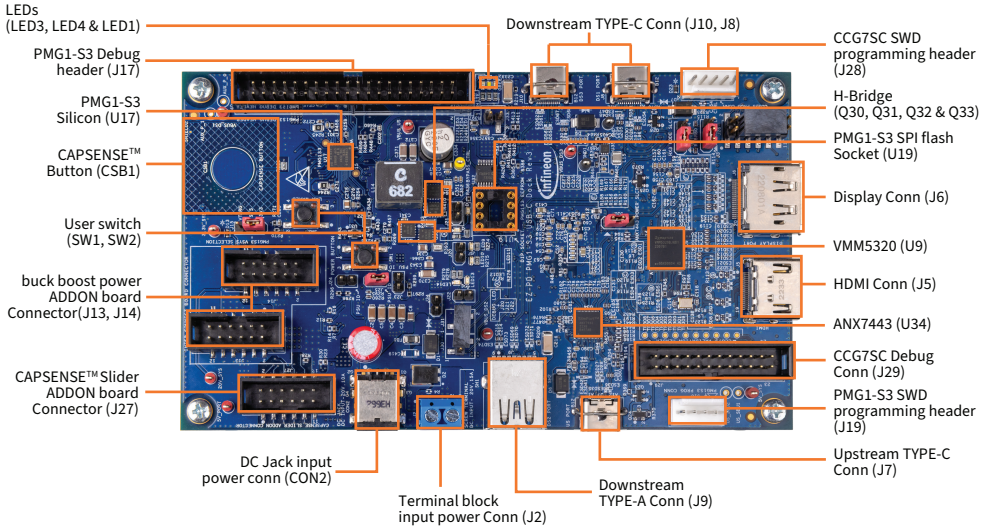
Step 4: Dock enumerates all the downstream ports in the windows device manager

Open Device manager the dock will be enumerated as a superspeed and high-speed hub and the PMG1-S3 will be enumerated as “billboard device”, “DMC device” and “USB input device”.

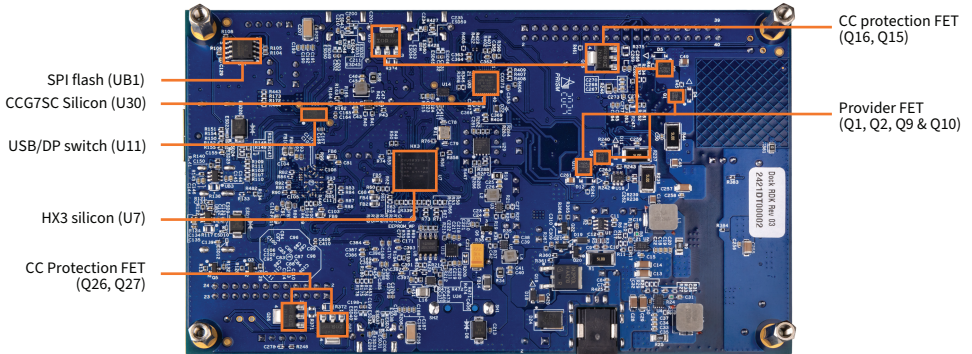


4 Device manager

REF_PMG1_S3_DOCK (Top View)



REF_PMG1_S3_DOCK (Bottom View)



See the kit guide available at www.infineon.com/REF_PMG1_S3_DOCK for more details.