

# **$\mu$ C/Probe™ XMC™**

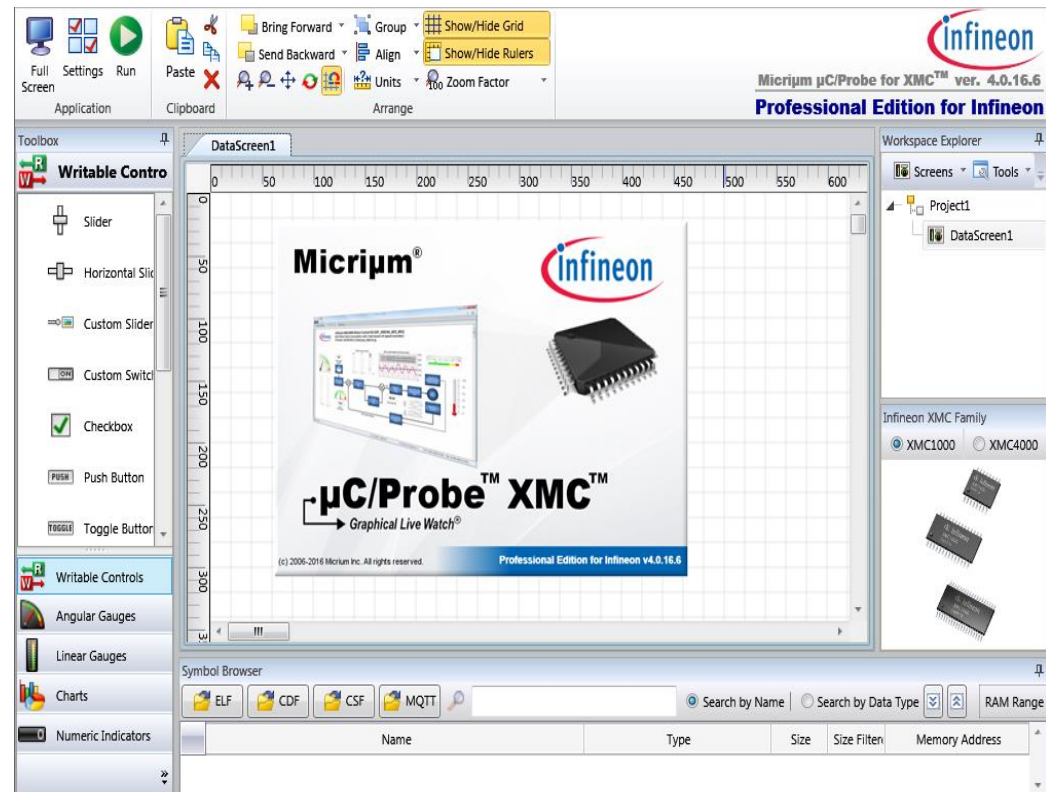
Peek inside XMC™



# Peek inside XMC™

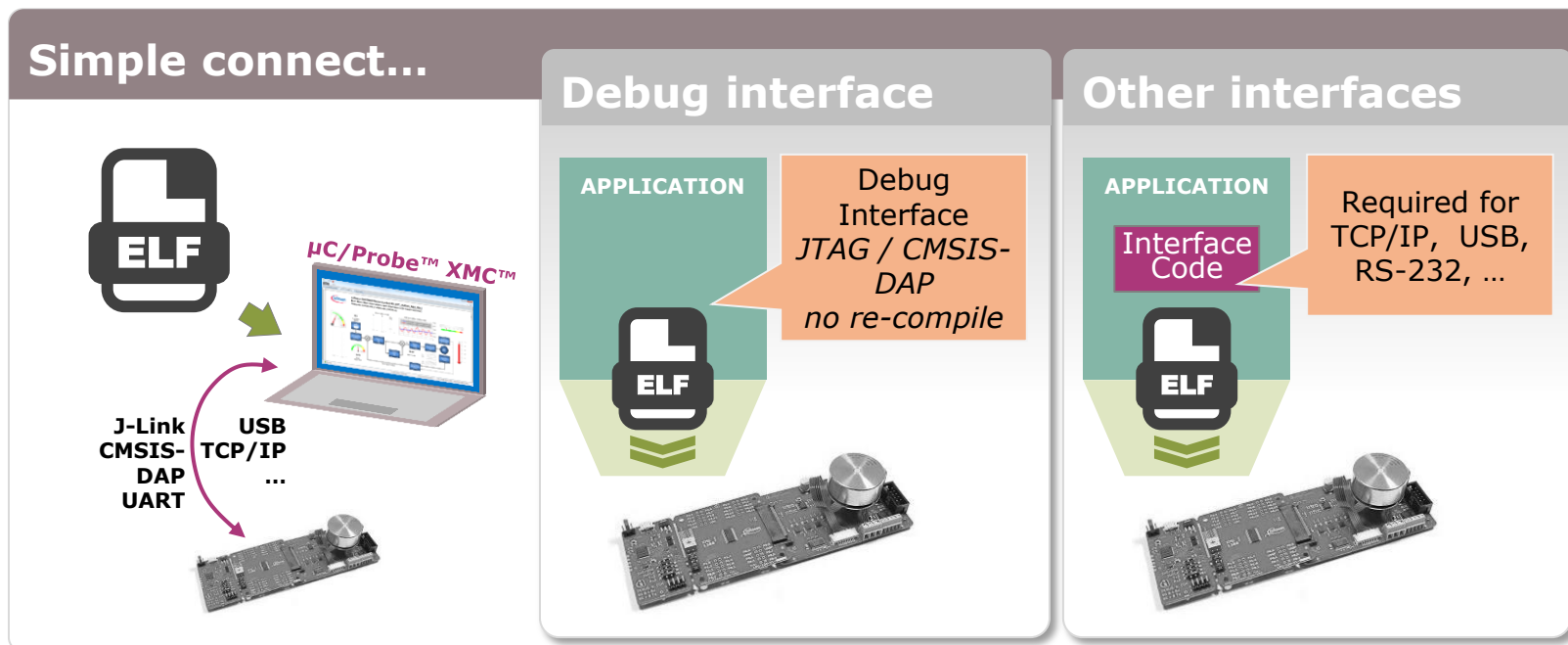
## **µC/Probe™ XMC™** **Graphical Live Watch™**

- > Visually appealing and real-time
- > Effortless *but powerful*
- > Seamless *ELF file complaint*
- > Professional *but free-of-charge*



[www.infineon.com/ucprobexmc](http://www.infineon.com/ucprobexmc)

# Just a matter of minutes...



- > Non-intrusive and hot-plug during run-time – peek inside XMC™
- > Extend debugging capabilities – combine with debuggers
- > Available for all [XMC™ MCUs](#) and boards
- > [Tool independent](#) – use ELF file format (IEEE659 standard)

# Simple, useful and powerful in one

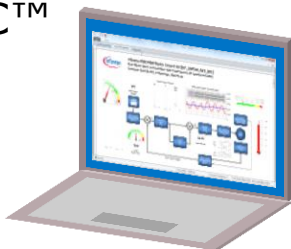


- Simple build our user interface
  - No need to touch or re-compile your application code
  - Drag and drop controls and indicators
  - Read, observe and visualize internals tangible
  - Access, control and fine-tune your embedded system
- Use standard ELF file format (IEEE659)

# Plug-and-play

## Setup

- 1 Install  $\mu$ C/Probe™  
XMC™



- 2 Select ELF file



## Build UI

- 3 Drag & drop



- 4 Connect  
XMC™ board



## Interact

- 5

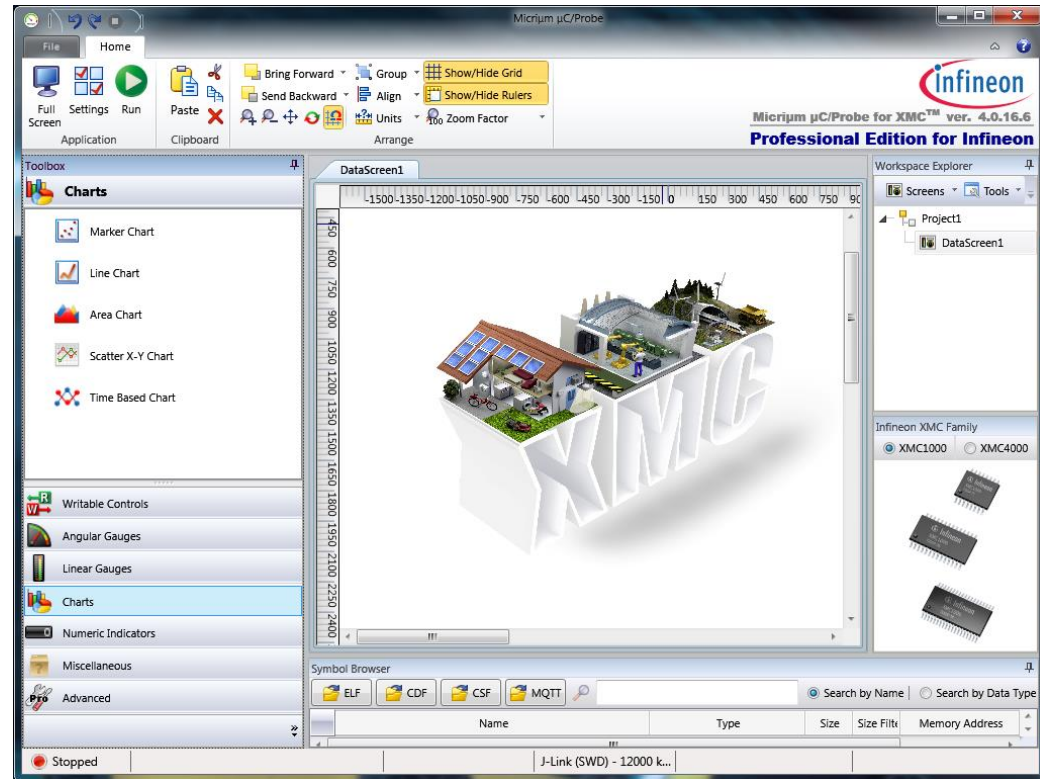


- > Visualize
- > Observe
- > Control

# Peek inside XMC™ microcontrollers

## μC/Probe™ XMC™ Graphical Live Watch™

- > Prototyping
- > Debugging
- > Trouble shooting
- > Fine-tune
- > Demos



[www.infineon.com/ucprobexmc](http://www.infineon.com/ucprobexmc)





Part of your life. Part of tomorrow.

